

**476 EAGLE NEST DRIVE**  
VILLAGES OF SAND CREEK - CHESTERTON, IN





#### ROOM DIMENSIONS

LIVING ROOM : 20.0' × 18.0'

KITCHEN : 14.0' × 12.0'

PRIMARY BEDROOM : 15.0' × 13.0'

SECOND BEDROOM : 14.0' × 12.0'

THIRD BEDROOM : 16.0' × 12.0'

FOURTH BEDROOM : 13.0' × 12.0'

RECREATION ROOM : 33' × 31'

FLEX ROOM : 22' × 13'

4 BEDROOM

2.2 BATH

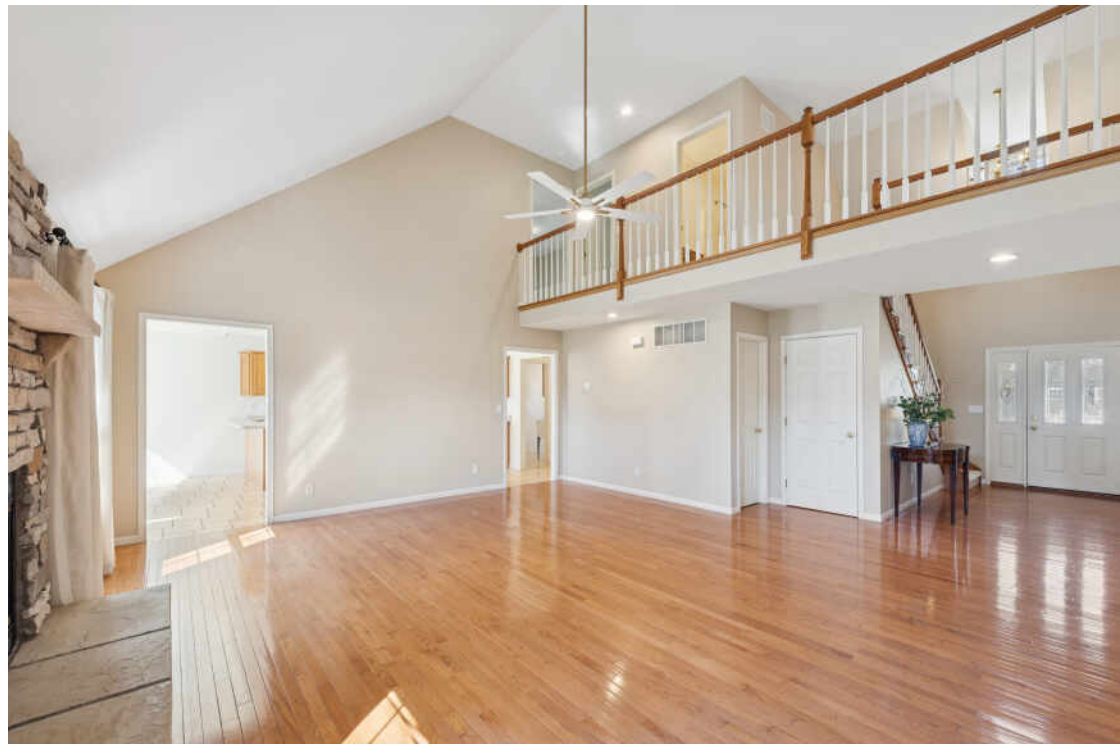
TAXES: \$4,695

ASSESSMENTS: \$65 / MONTH

## SPACIOUS GEM IN VILLAGES OF SAND CREEK

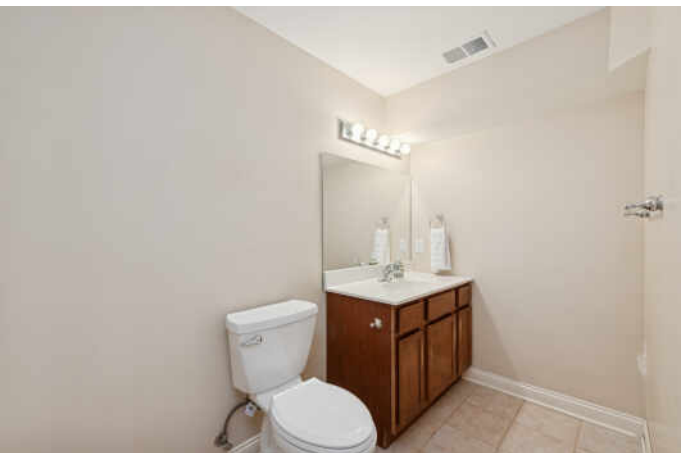
MAIN FLOOR LIVING AT ITS FINEST! Move-in ready home featuring freshly painted walls and brand-new carpet throughout. The sun-drenched great room is a true showstopper, boasting soaring cathedral ceilings, hardwood floors and a cozy gas fireplace, framed by windows that flood the space with natural light. Enjoy the ease of a main-floor primary suite, complete with a spa-inspired bath and a spacious walk-in closet. The oversized, eat-in kitchen is an entertainer's dream -- perfect for hosting family gatherings, with easy access to the back deck through sliding doors for seamless indoor-outdoor living. Upstairs are three generously sized bedrooms and an updated full bath. The finished open-concept basement offers endless possibilities -- create a home theater, gym, playroom, or all of the above! Plus, there's a convenient half bath and a dedicated flex room to suit all your lifestyle needs. This home truly has it all -- space, style, and the perfect layout. Don't miss your chance to make it yours.















## NOTES

[illegible]



**SUSIE JASKOWIAK**

(219) 508-6690

SUSIEJASKOWIAK@ATPROPERTIES.COM

SUSIEJASKOWIAK.COM

**SUSIE**  
**JASKOWIAK**



**CHRISTIE'S**  
INTERNATIONAL REAL ESTATE

All specifications, features, designs, price, assessments, taxes and materials are subject to change without notice. Depicted floor plans and architectural renderings are only an artist's impression.

