

482 N LAKE SHORE DRIVE #482
PALATINE





ROOM DIMENSIONS

LIVING ROOM : 14' x 13'

DINING ROOM : 11' x 9'

KITCHEN : 14' x 10'

PRIMARY BEDROOM : 14' x 11'

SECOND BEDROOM : 12' x 12'

Enjoy ranch style living at its best! This lovingly cared for end unit offers the perfect layout. Bright and spacious living room offers scenic lakeside views. The dining room is perfect for breakfast on the go or hosting a more formal dinner. The kitchen features complimentary maple cabinetry with granite countertops, a pantry closet and in-unit laundry! The primary bedroom features two closets and a private ensuite with a standing shower. The additional bedroom is perfect to be used as a secondary bedroom or an office. The home includes a private garage with additional guest parking. Hardwood flooring throughout and a separate, courtyard entrance finishes off this property. Convenient location with access to downtown Palatine offering Metra access, shopping, dining and more!



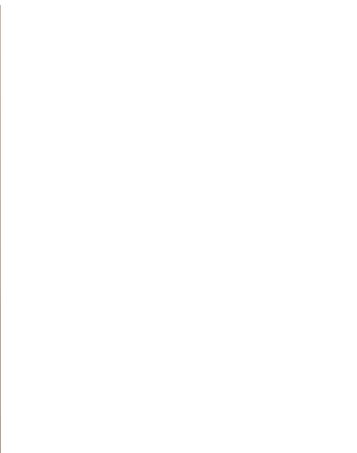
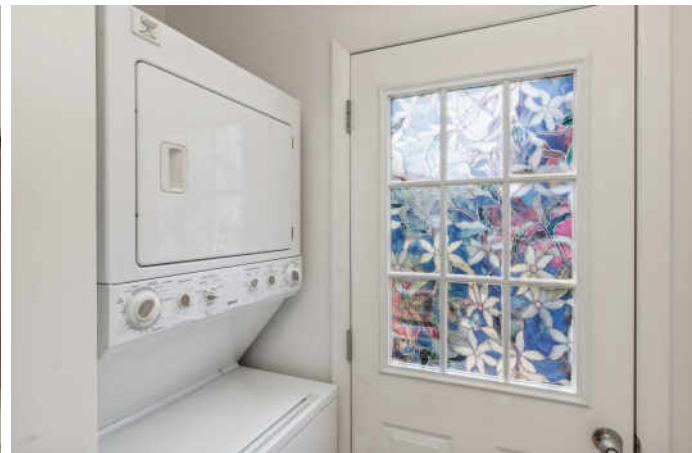
2 BEDROOM

2 BATH

TAXES: \$6,112

ASSESSMENTS: \$204 / MONTH







THE VILLAGE OF **PALATINE** HAS MASTERED THE ART OF BALANCE.

The growing community has a healthy mix of residents who enjoy its friendly suburban lifestyle and businesses that fuel the local economy.

The village embraces growth to support a wealth of amenities and services. The Palatine Park District has 28 parks, an 18-hole golf course, and a variety of classes from fitness and sports to arts and crafts. Palatine offers scenic views with winding trails, beautiful residential areas, and nearby Deer Grove Forest Preserve.

Palatine's downtown business district is both charming and self-sufficient for residents. Restaurants include a mix of local favorites from classic eateries to upscale breweries, as well as a variety of local bars. The village hosts several street festivals and a popular farmers market.

Commuters have access to the Chicago Loop with the Palatine Metra station and I-90. The nearby Chicago Executive Airport offers private and corporate aircraft services.



NOTES

10 482 N LAKE SHORE DRIVE #482

482 N LAKE SHORE DRIVE #482 11



DIANE MARKUS

(847) 309-3190

DIANEMARKUS@ATPROPERTIES.COM

DELBOCCIO | MARCHETTI
GROUP

@properties®

CHRISTIE'S
INTERNATIONAL REAL ESTATE

All specifications, features, designs, price, assessments, taxes and materials are subject to change without notice. Depicted floor plans and architectural renderings are only an artist's impression.

