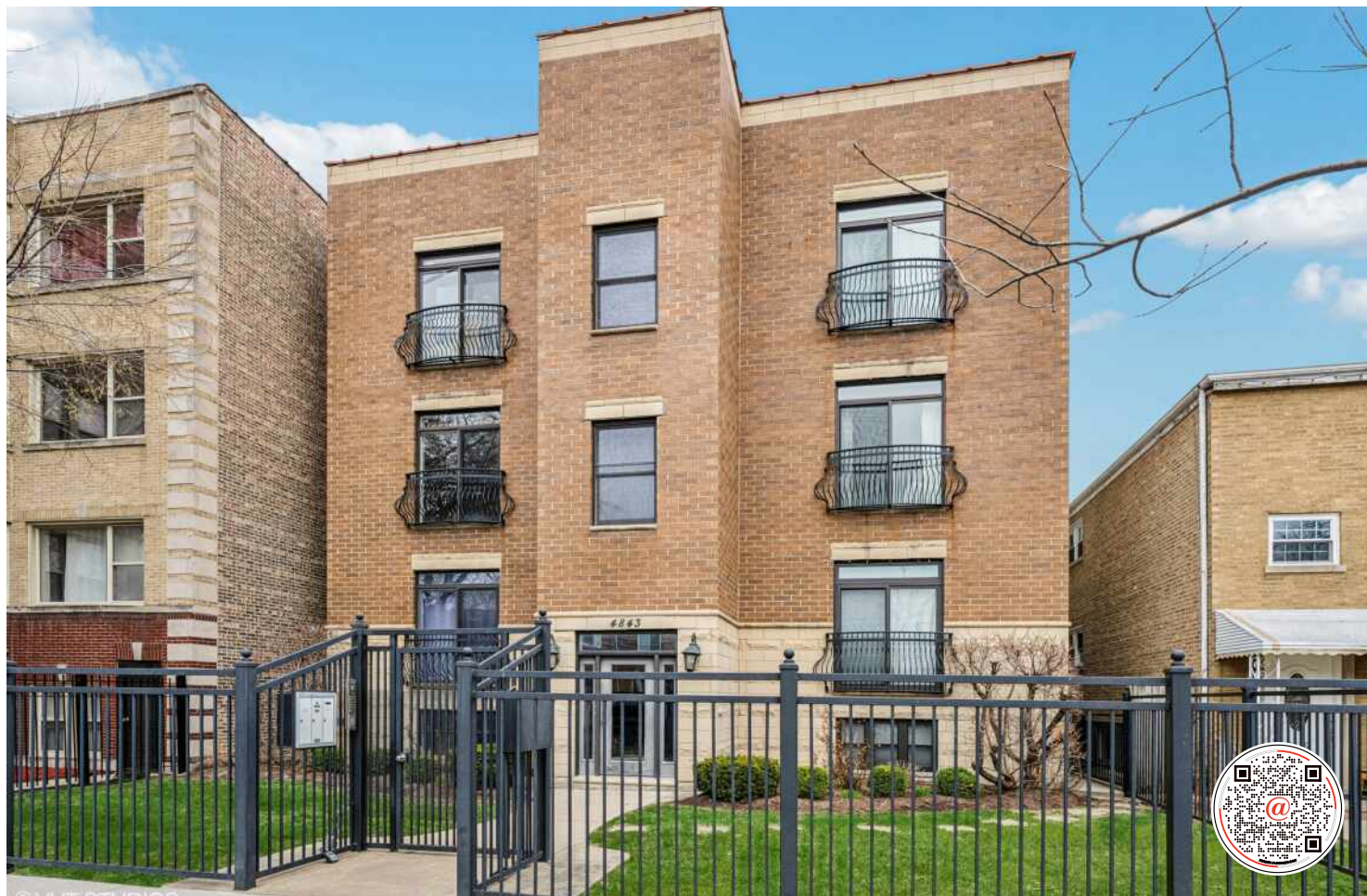


4843 N HARDING AVENUE #2S

ALBANY PARK





ROOM DIMENSIONS

DINING : 15' × 11'

LIVING : 15' × 10'

KITCHEN : 20' × 9'

PRIMARY BEDROOM : 16' × 11'

SECOND BEDROOM : 13' × 10'

BALCONY : 11' × 8'

STORAGE : 10' × 4'

2 BEDROOM

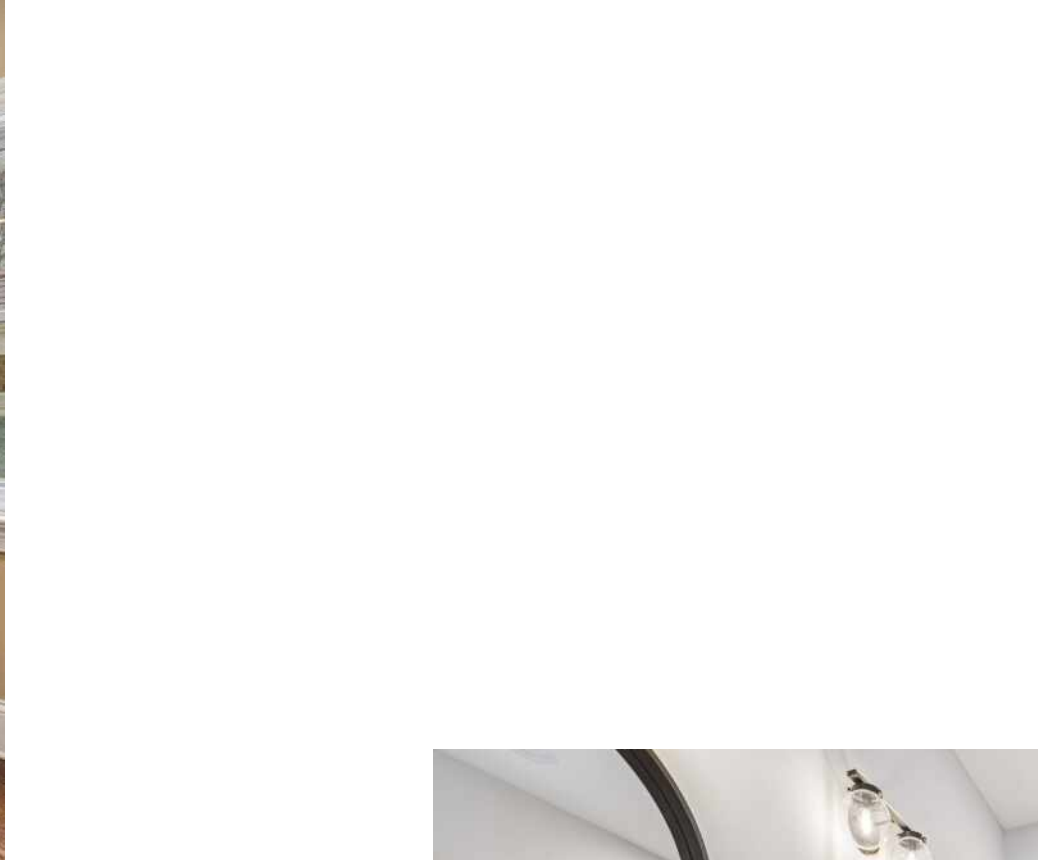
2 BATH

TAXES: \$3,956

ASSESSMENTS: \$155 / MONTH

ALBANY PARK IS BECKONING!

Discover this charming and meticulously maintained 2-bedroom, 2-bathroom condominium in the heart of Albany Park! Built just 15 years ago, this home reflects the excellent care provided by its owners. The desirable open floor plan is perfect for modern living and entertaining. Aspiring chefs will appreciate the kitchen, featuring 42" cabinets, granite countertops, stainless steel appliances (including a wine fridge), and abundant storage and counter space. Enjoy cozy winters by the gas fireplace in the living area, which comfortably accommodates a dining space and offers easy access to your private deck - ideal for grilling. Outdoor enthusiasts will love the nearby forest preserve. Comes with 1 exterior parking space. Daily conveniences are within a mile, including Aldi, Jewel, Seafood City, Target, Tony's Fresh Market, Old Irving Brewery, and LA Fitness, with Whole Foods and Mariano's also nearby. Commuting is effortless with the Kimball Brown Line station within walking distance and expressway access just minutes away. Recent improvements: Water Heater 2020, Air Conditioner 2022, Washer/Dryer 2023 Wine Cooler 2022 Welcome Home!

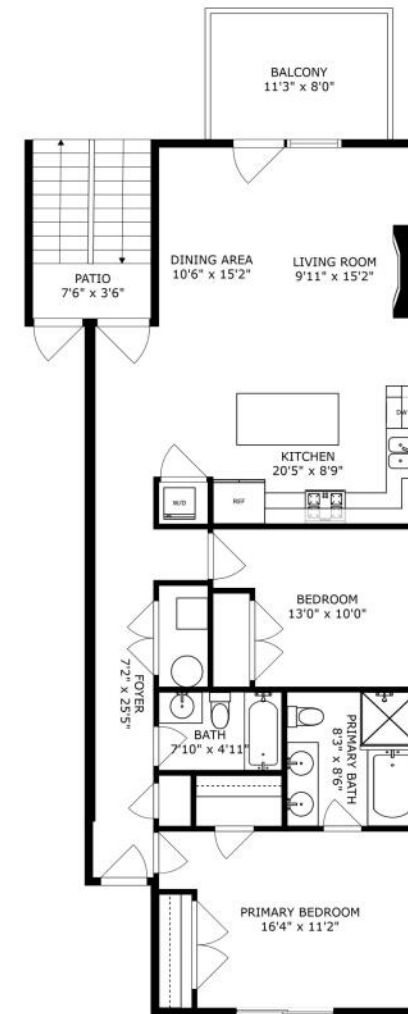




VHT STUDIOS



VHT STUDIOS



SIZES AND DIMENSIONS ARE APPROXIMATE, ACTUAL MAY VARY.



IF VARIETY IS THE SPICE OF LIFE, **ALBANY PARK** IS ON FIRE.

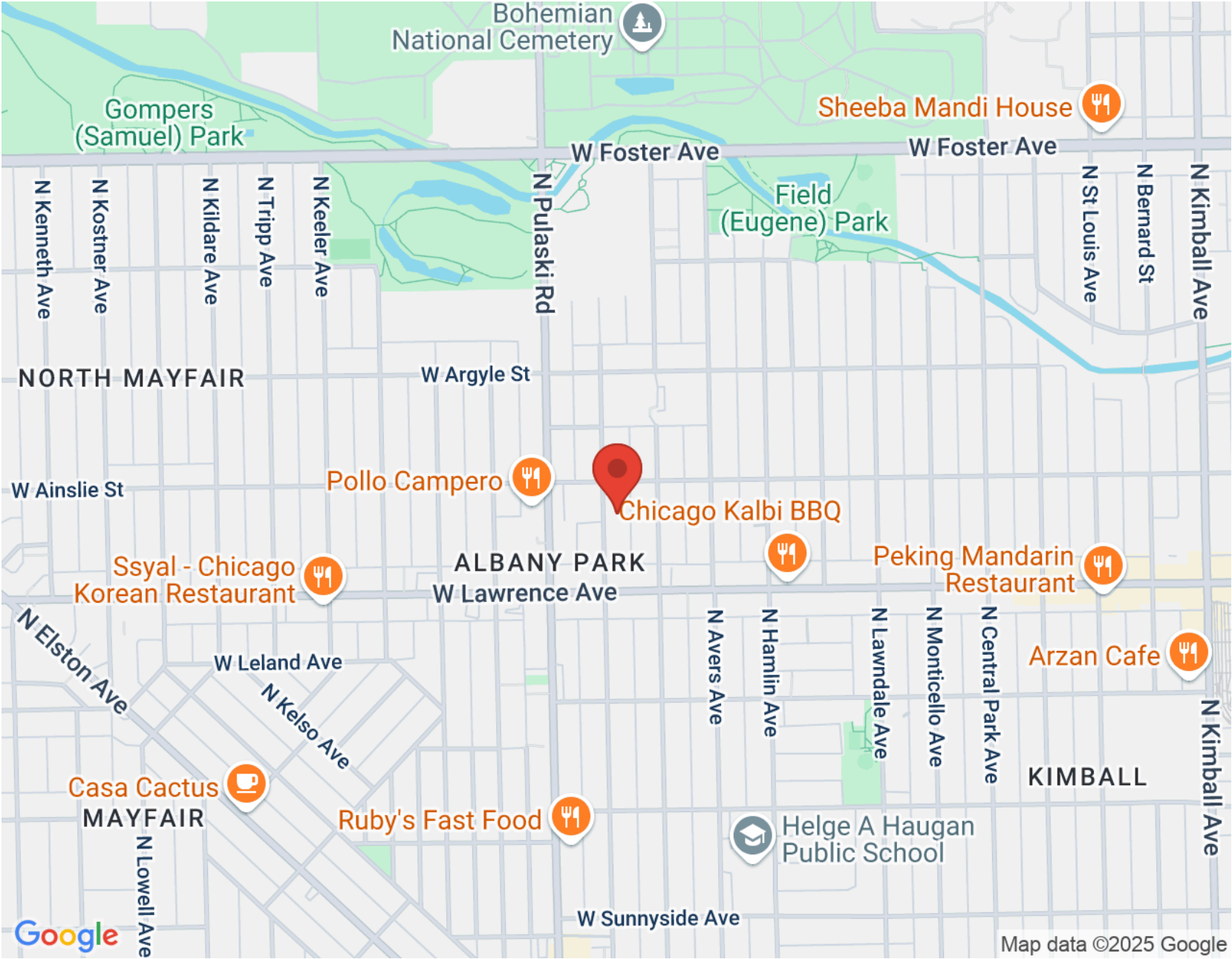
Neighbors are not strangers in this tight-knit community, where local shops and restaurants reflect the neighborhood’s eclectic vibe.

Homes include a mix of single-family homes, bungalows, brick two-flats, apartments, and duplexes. Nearby North Mayfair, which is part of the larger Albany Park community, is a mecca of historic Chicago bungalows, earning a spot on the National Register of Historic Places.

The neighborhood’s 16-acre Eugene Field park includes two bridges as well as a playground, tennis courts, athletic fields, 60-foot tall light tower, and historic Tudor Revival style brick field house. The park was named for American writer Eugene Field, who was best known for his work as a children’s poet including the classic *Little Boy Blue*.

Residents of Albany Park have even more to love with the addition of the 312 RiverRun trail that connects to nearby neighborhoods.

Whether heading downtown, to the suburbs, or to O’Hare International Airport, commuters have access to the CTA Blue Line and Brown Line, as well as the expressway.



NOTES _____



PHILIP SCHWARTZ

773.677.2967

PHILIP@ATPROPERTIES.COM

CHICAGOREALTYPRO.COM



LOCAL EXPERT — GLOBAL NETWORK



All specifications, features, designs, price, assessments, taxes and materials are subject to change without notice. Depicted floor plans and architectural renderings are only an artist's impression.

