

# 4871 N KRUGER AVENUE

JEFFERSON PARK





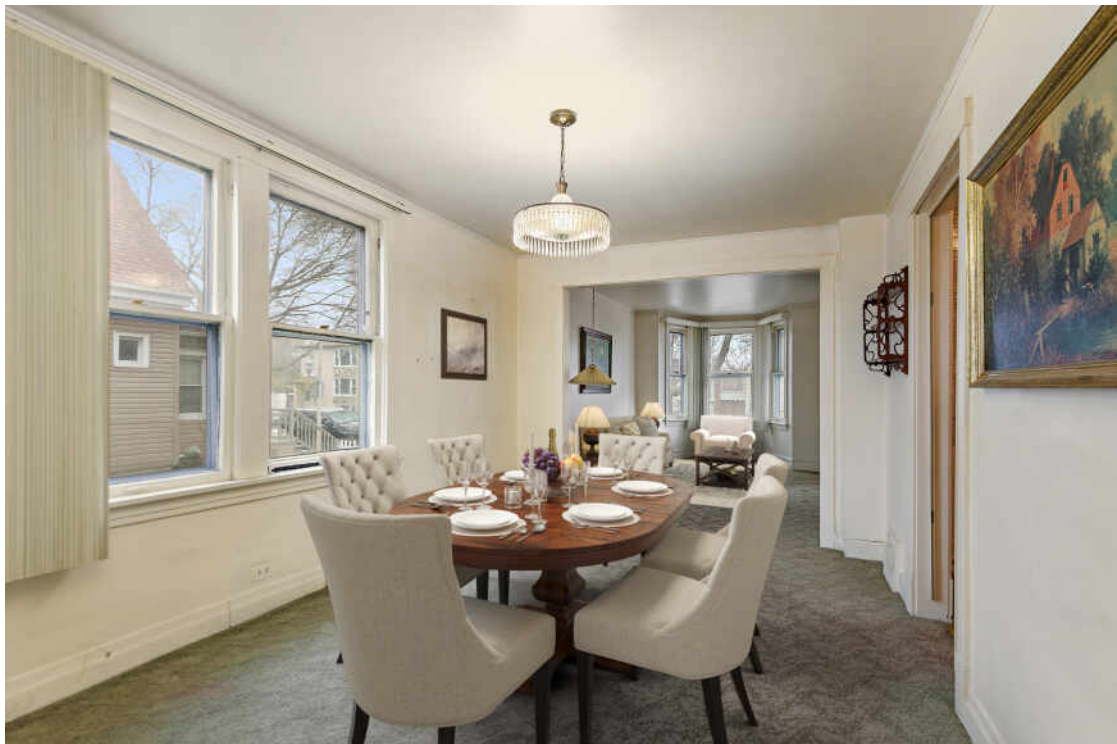
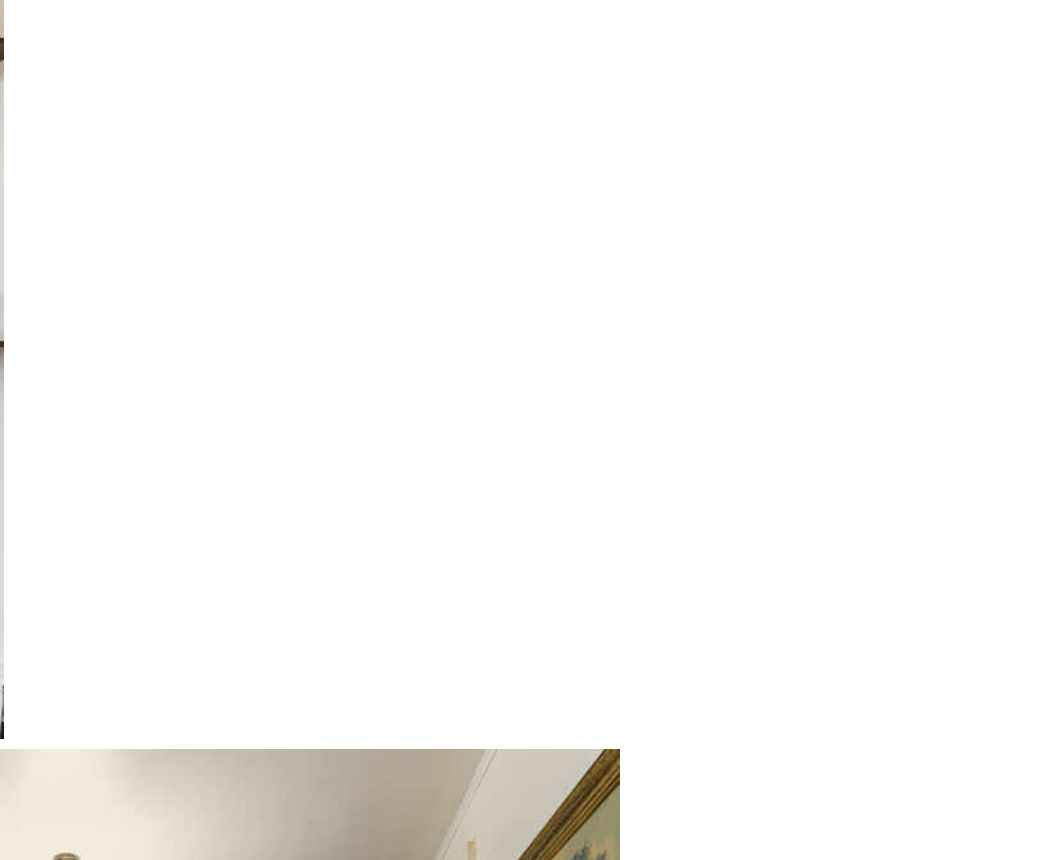


2 + LOFT BEDROOM  
1 BATH

## JEFFERSON PARK

Nestled at the end of a quiet street in Jefferson Park, this charming two-story home offers both comfort and potential. The exterior features a classic design with inviting curb appeal, complemented by a detached one-car garage that provides convenient parking and extra storage. Upon entering, you are welcomed into a cozy living room that sets the tone for the rest of the home. From there, you transition into a spacious dining room, perfect for family meals and entertaining guests. The kitchen follows, offering functionality and an opportunity for personalization to make it your own. At the back of the house lies the expansive family room, which serves as the heart of the home. This large space is ideal for gatherings, filled with natural light and designed for relaxation or fun-filled activities. The main floor also includes a well-appointed bedroom, providing easy accessibility. A staircase leads up to a loft area, which can be transformed into a playroom, office or additional sleeping space--perfect for accommodating guests or creating a personal retreat. One of the standout features of this property is the unfinished basement with outside access. This versatile space holds endless possibilities, you could finish it into a gym area, an additional living room or even its own apartment. With its peaceful location at a dead-end street, this home combines tranquility with convenience, making it a wonderful place to settle down and create lasting memories!

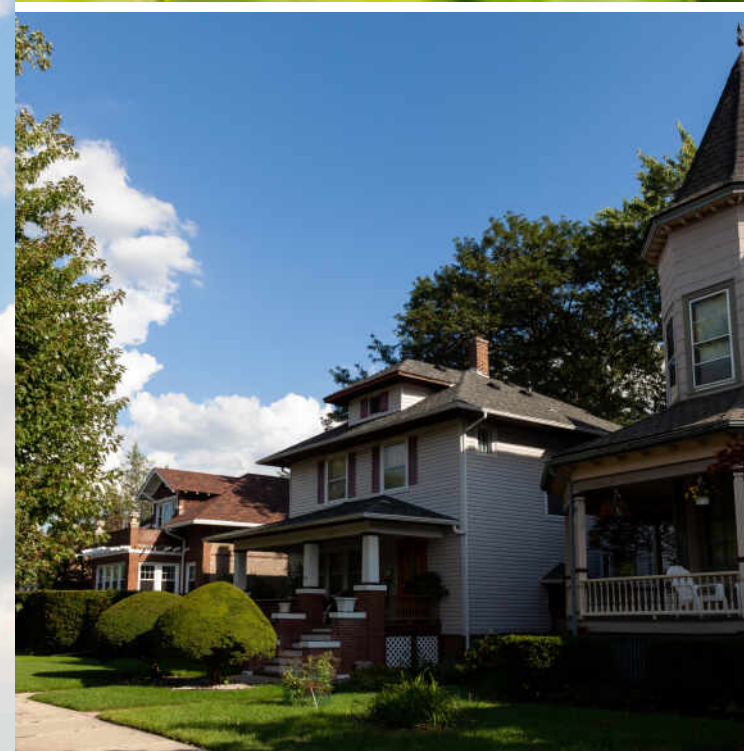












## HOME TO ONE OF THE AREA'S LARGEST TRANSPORTATION HUBS, **JEFFERSON PARK** IS KNOWN AS "THE GATEWAY TO CHICAGO."

The CTA Blue Line, Metra trains, and buses meet in the neighborhood along Milwaukee Avenue, making it easy for residents to get to surrounding communities and O'Hare International Airport.

The tight-knit community comes together for a variety of festivals at the neighborhood's namesake park, which spans seven acres. During the summer, Jeff Fest brings local and national musical acts to the park along with food and activities. Other annual events include the Taste of Polonia, drawing a large crowd at the Copernicus Center. Residents also enjoy the Ed Paschke Art Center, which houses the Chicago native's artwork, as well as a number of restaurants, some of which have been favorites among locals for decades.

Jefferson Park has seen an influx of new residents over the years, particularly among city dwellers looking for an alternative to the suburbs. The tree-lined neighborhood includes a range of housing choices, from mid-century single-family homes to new-construction condominiums.





FLOOR 2

FLOOR 3

FLOOR 4

BELOW GROUND: 0 sq. ft, BELOW GROUND: 0 sq. ft, FLOOR 3: 980 sq. ft, FLOOR 4: 425 sq. ft  
EXCLUDED AREAS: GARAGE: 248 sq. ft, BASEMENT: 653 sq. ft, STORAGE: 46 sq. ft,  
LOW CEILING: 259 sq. ft

FLOOR PLAN CREATED BY CUBICASA APP. MEASUREMENTS DEEMED HIGHLY RELIABLE BUT NOT GUARANTEED.

[illegible]



## KARRI GIBAS

(847) 354-9162

KARRI@ATPROPERTIES.COM

ATPROPERTIES.COM/KARRIGIBAS



All specifications, features, designs, price, assessments, taxes and materials are subject to change without notice. Depicted floor plans and architectural renderings are only an artist's impression.

