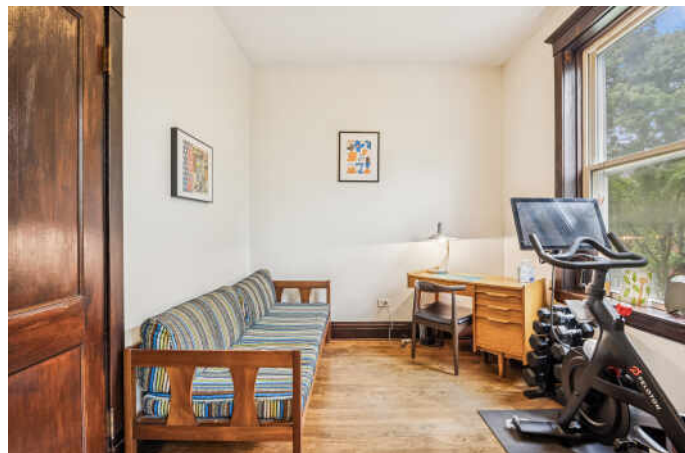


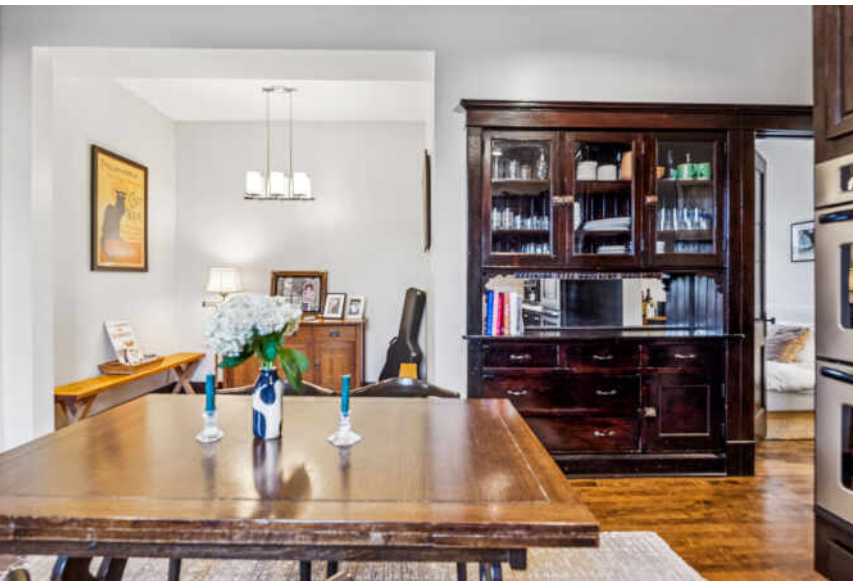
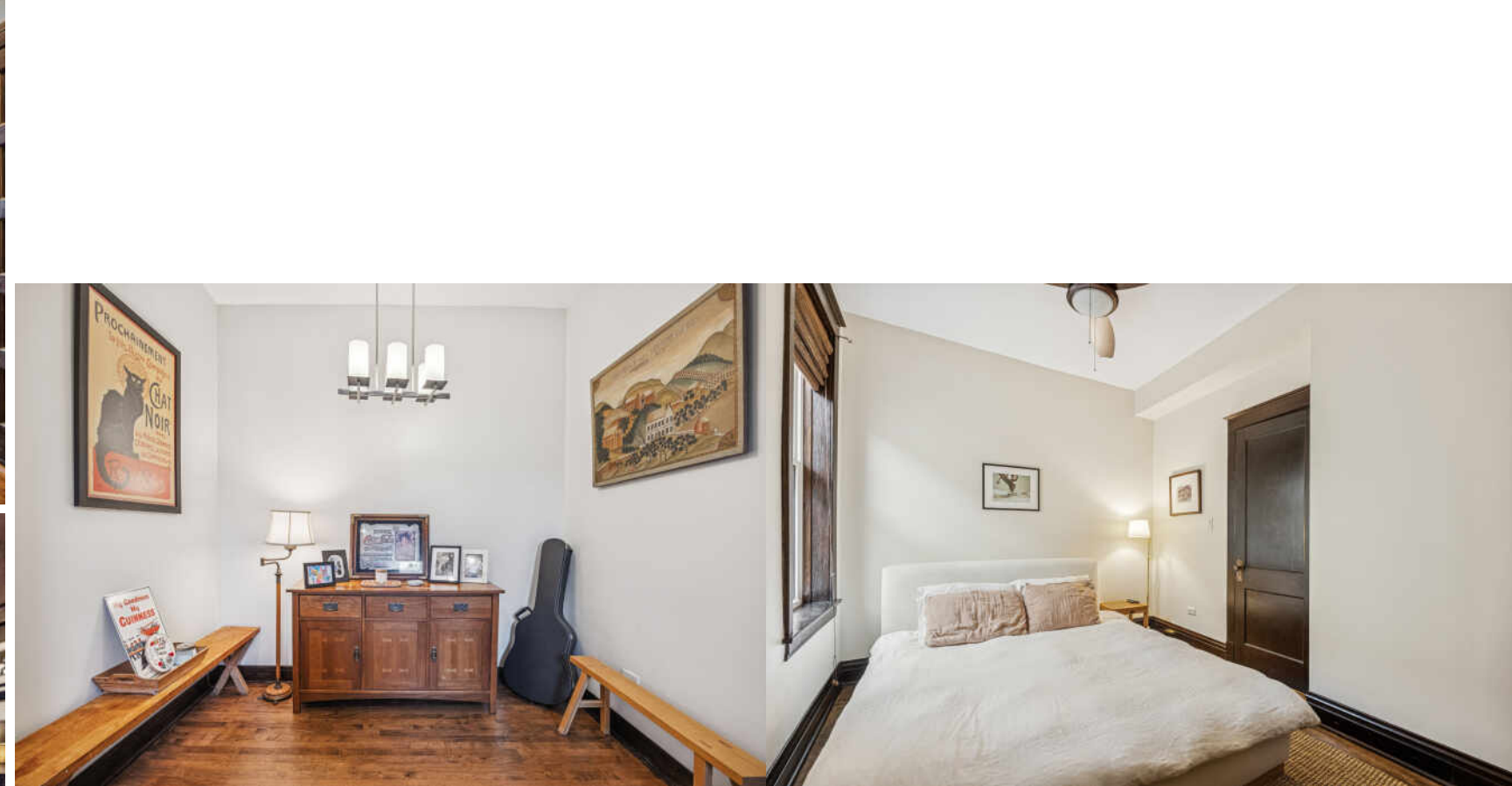
4940 N RIDGEWAY AVENUE #3
ALBANY PARK

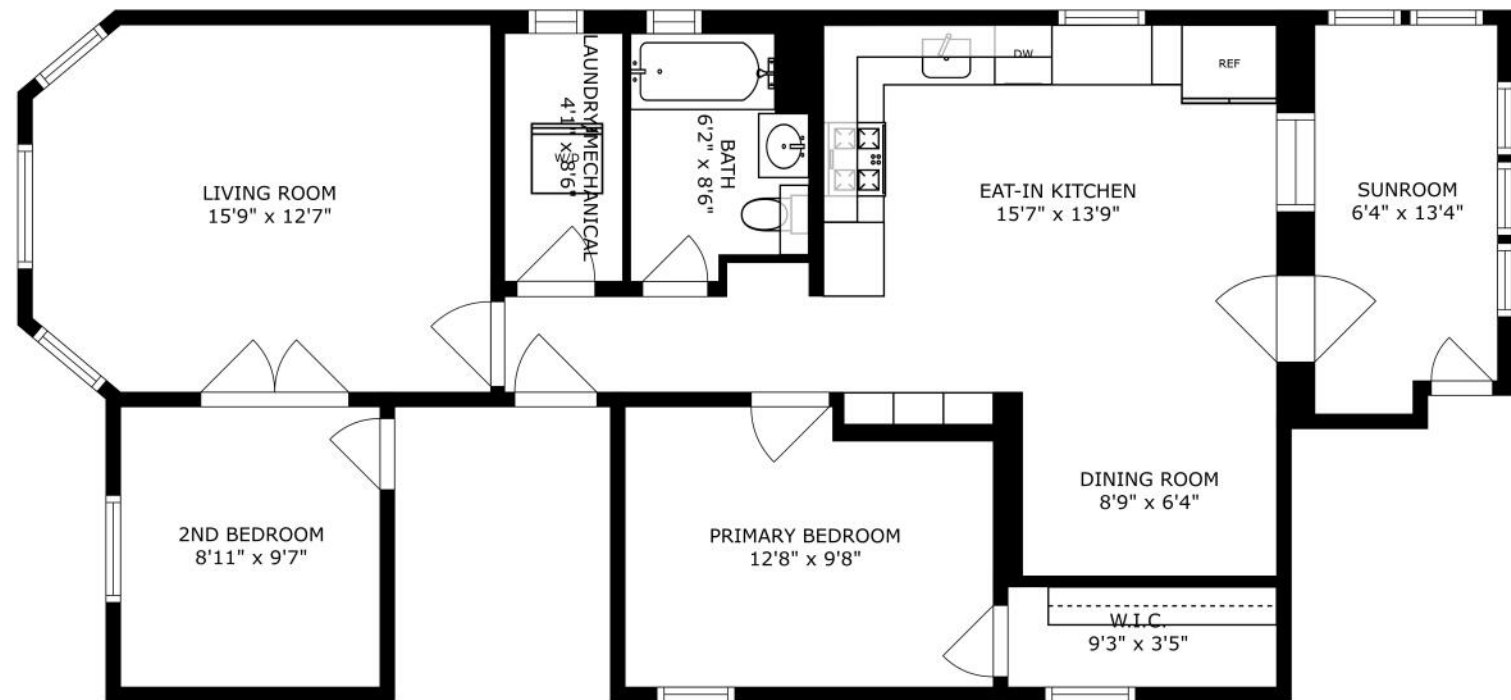




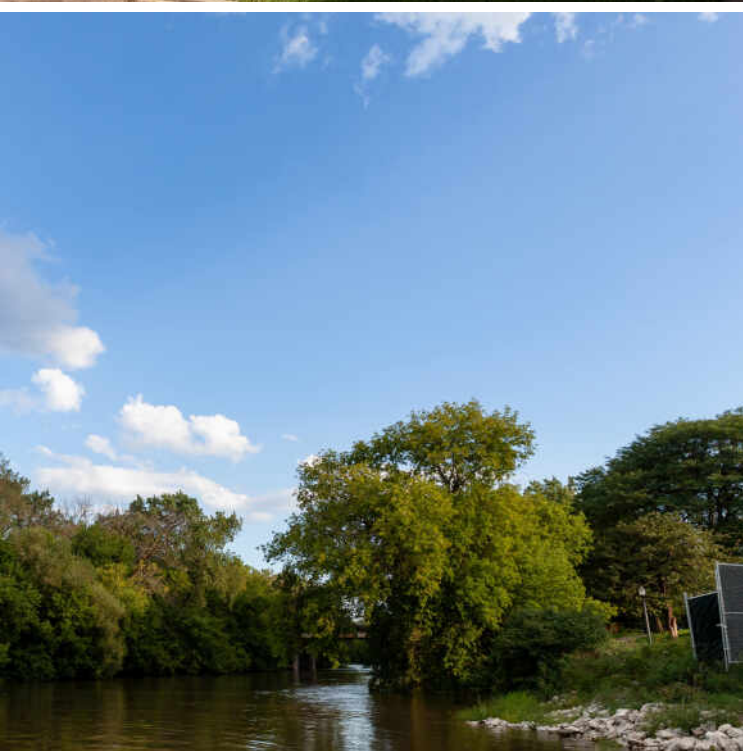
Charming and sun-filled 2-bedroom, 1-bath condo located on the top floor of a classic brick walk-up in vibrant Albany Park, near Mayfair! This lovingly maintained home blends vintage character with thoughtful updates, featuring hardwood floors, custom built-ins, and French doors leading to a versatile second bedroom with closet-perfect as a home office or guest room. The spacious kitchen offers tons of cabinets and counter space, double oven, room for a dining table or island, also a dining area and opens to a delightful sunroom ideal for morning coffee or cozy dinners. In-unit laundry seals the deal! Enjoy treetop views, great natural light, and the quiet privacy of a third-floor walk-up. The building features a really cute shared yard and common outdoor space, perfect for relaxing or entertaining. One coveted garage parking spot included! Incredible location close to parks, transit, shops, and restaurants. Super cute, full of charm, and move-in ready!

2 BEDROOM
1 BATH
TAXES: \$5,082
ASSESSMENTS: \$215 / MONTH





SIZES AND DIMENSIONS ARE APPROXIMATE, ACTUAL MAY VARY.



IF VARIETY IS THE SPICE OF LIFE, **ALBANY PARK** IS ON FIRE.

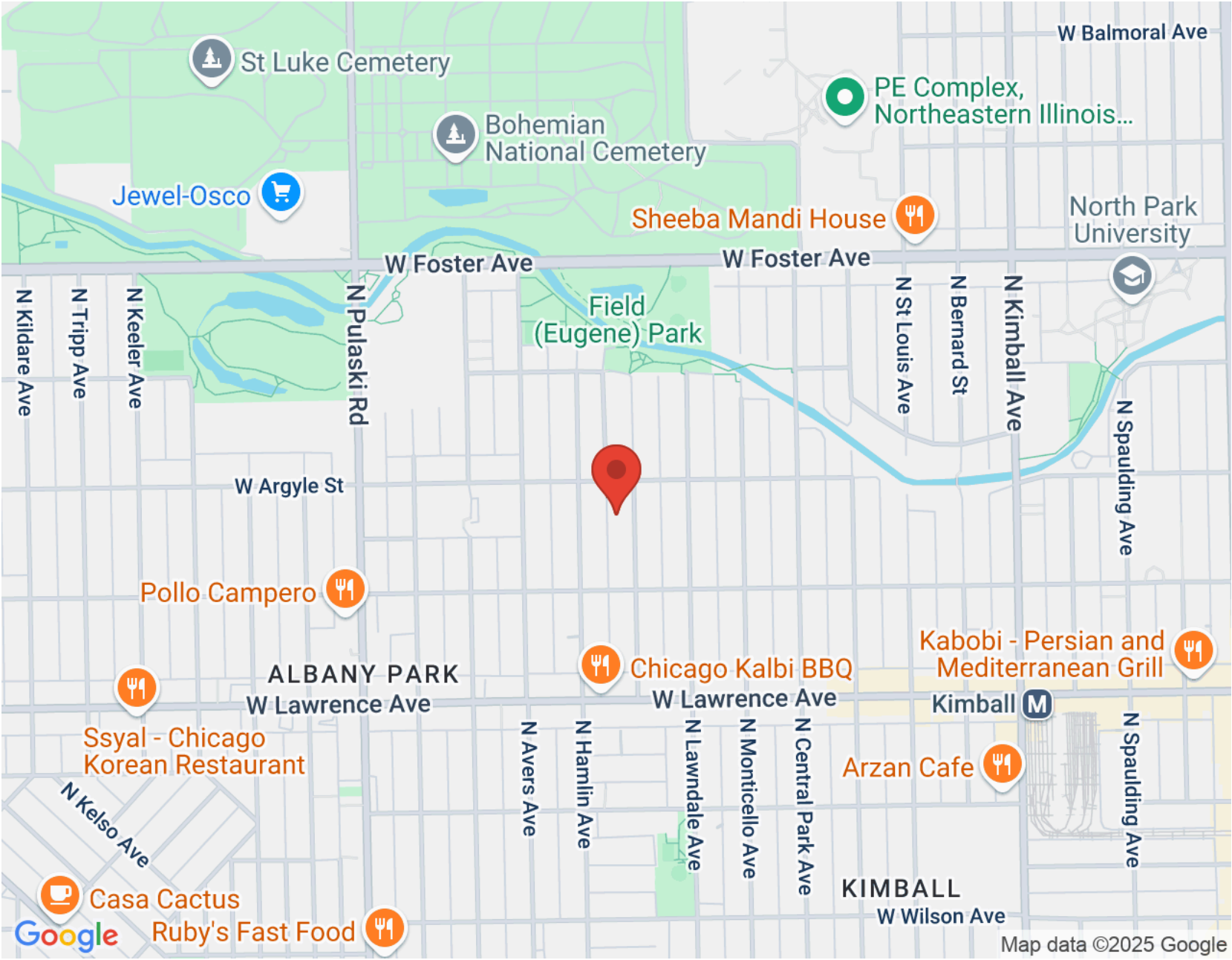
Neighbors are not strangers in this tight-knit community, where local shops and restaurants reflect the neighborhood’s eclectic vibe.

Homes include a mix of single-family homes, bungalows, brick two-flats, apartments, and duplexes. Nearby North Mayfair, which is part of the larger Albany Park community, is a mecca of historic Chicago bungalows, earning a spot on the National Register of Historic Places.

The neighborhood’s 16-acre Eugene Field park includes two bridges as well as a playground, tennis courts, athletic fields, 60-foot tall light tower, and historic Tudor Revival style brick field house. The park was named for American writer Eugene Field, who was best known for his work as a children’s poet including the classic *Little Boy Blue*.

Residents of Albany Park have even more to love with the addition of the 312 RiverRun trail that connects to nearby neighborhoods.

Whether heading downtown, to the suburbs, or to O’Hare International Airport, commuters have access to the CTA Blue Line and Brown Line, as well as the expressway.



NOTES _____



MARY O'MALLEY

(847) 804-2644

MARYOMALLEY@ATPROPERTIES.COM



All specifications, features, designs, price, assessments, taxes and materials are subject to change without notice. Depicted floor plans and architectural renderings are only an artist's impression.

