



4 E ELM STREET #15S GOLD COAST



4 E ELM STREET #15S
GOLD COAST

@properties®

CHRISTIE'S
INTERNATIONAL REAL ESTATE

LP LUXURY
PORTFOLIO
INTERNATIONAL



PHIL SKOWRON BROKER

312.612.0303 mobile
phil@philskowron.com
www.philskowronre.com



4 E ELM STREET #15S
GOLD COAST

@properties®

CHRISTIE'S
INTERNATIONAL REAL ESTATE

LP LUXURY
PORTFOLIO
INTERNATIONAL®



LIVING ROOM

4 E ELM STREET #15S INTRODUCING UNIT 15S AT 4 E ELM, A STUNNING HALF FLOOR RESIDENCE IN THE HEART OF THE GOLD COAST.

ROOM DIMENSIONS

Foyer	8'x9'
Living Room	15'x31'
Dining Room	14'x19'
Terrace	15'x11'
Kitchen	12'x20'
Family Room	17'x20'
Primary Bedroom	27'x15'
WIC	8'x22'
WIC	7'x9'
Second Bedroom	12'x13'
Third Bedroom	13'x14'
Laundry Room	8'x16'

FEATURES

The sophisticated residence offers private elevator entry into an expansive 3,516 SF home featuring white oak hardwood floors, designer lighting fixtures, dramatic 10' ceilings & smart home integration. The open floor plan with its floor-to-ceiling windows provides a bright & inviting living space with access to the large terrace & views down State & Rush Streets. The modern kitchen boasts top-of-the-line appliances, fixtures, Honed Calcutta Marble waterfall countertops, and full-height, high gloss Florense cabinets. The adjacent family room offers a seamless flow, ideal for hosting intimate gatherings or larger dinner parties. The east-facing primary suite is a sanctuary of comfort and style, with its spacious layout, gorgeous lake views, walk-in closets & an en-suite bathroom featuring a luxurious soaking tub, a separate glass-enclosed shower, & sleek double sinks. The 2 additional bedrooms offer generous space & en-suite bathrooms, perfect for guest rooms or an office, depending on your needs. The unit also includes a large laundry room with Samsung side-by-side, front-load washer/dryer & additional storage space. Two prime side-by-side parking spaces are available for extra. Residents of 4 E Elm have exclusive access to various amenities, including a state-of-the-art fitness center, theater room, party room/lounge & beautifully landscaped terrace with a hot tub and pool. The building also offers 24-hour door staff service, ensuring convenience & security for its residents. Situated in the highly sought-after Gold Coast neighborhood, this property provides easy access to the city's finest dining, shopping, & entertainment.



PHIL SKOWRON BROKER

312.612.0303 mobile phil@philskowron.com
www.philskowronre.com



LIVING ROOM



LIVING ROOM



LIVING ROOM





LIVING ROOM



LIVING ROOM



DINING ROOM



DECK



KITCHEN



KITCHEN



KITCHEN



FAMILY ROOM



FAMILY ROOM



PRIMARY BEDROOM



PRIMARY BEDROOM



PRIMARY BEDROOM



PRIMARY BEDROOM



PRIMARY BEDROOM



PRIMARY BATHROOM



PRIMARY BATHROOM



PRIMARY BEDROOM CLOSET



BEDROOM



BATHROOM



2ND BATHROOM



LAUNDRY ROOM



WHEN YOU REACH THE **GOLD COAST**, YOU KNOW YOU HAVE ARRIVED.

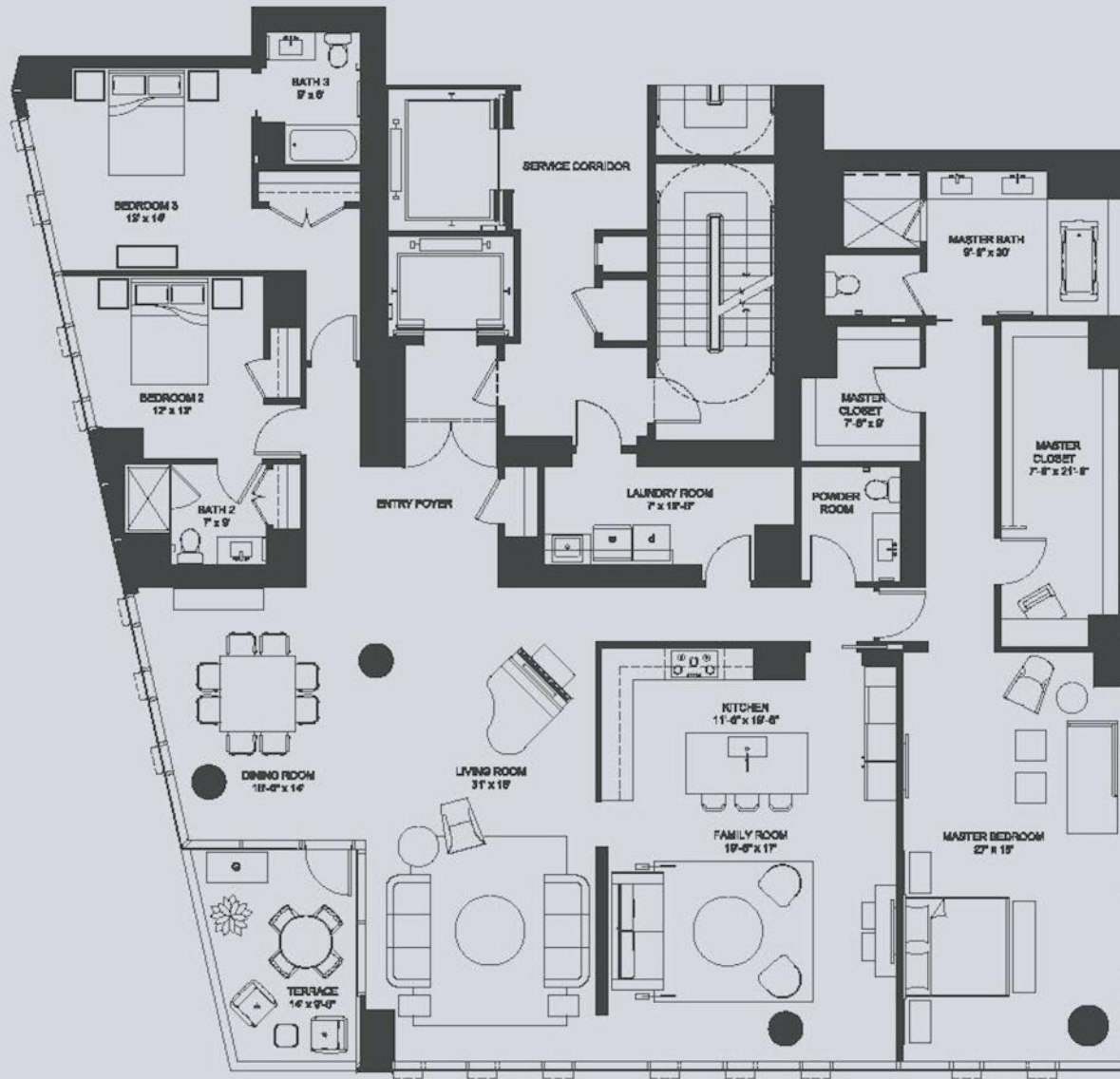
Locals love the neighborhood's mix of vintage and modern architecture, world-class shopping and dining, and easy access to Chicago's lakefront parks and beaches.

In Chicago's ultimate luxury neighborhood, you'll find lively beaches, internationally renowned boutiques, incredible cuisine, and vibrant nightlife, as well as beautiful parks and attractions.

Residents live among the best experiences the city has to offer. A day in the Gold Coast might include a venture down Michigan Avenue, a day at the beach, and shopping along Oak Street, followed by dinner at an award-winning restaurant.

From the stately mansions on Astor Street to the magnificent high-rises overlooking the lake, the Gold Coast also features a surprising variety of housing choices. In addition to the historic apartment buildings that line Lake Shore Drive, there are walk-ups, townhomes, and a number of contemporary high-rises with all the modern amenities.

For those heading to work downtown, their “commute” is about as convenient as it gets when it comes to city living.





@properties® | CHRISTIE'S
INTERNATIONAL REAL ESTATE

Leading REAL ESTATE
COMPANIES
OF THE WORLD®

LP
LUXURY
PORTFOLIO
INTERNATIONAL®

