



4 E ELM STREET #18S GOLD COAST



4 E ELM STREET #18S
GOLD COAST

4EELM18S.INFO

@properties

CHRISTIE'S
INTERNATIONAL REAL ESTATE

LP LUXURY
PORTFOLIO
INTERNATIONAL



PHIL SKOWRON BROKER

312.612.0303 mobile
phil@philskowron.com
www.philskowron.com



4 E ELM STREET #18S
GOLD COAST

4EELM18S.INFO

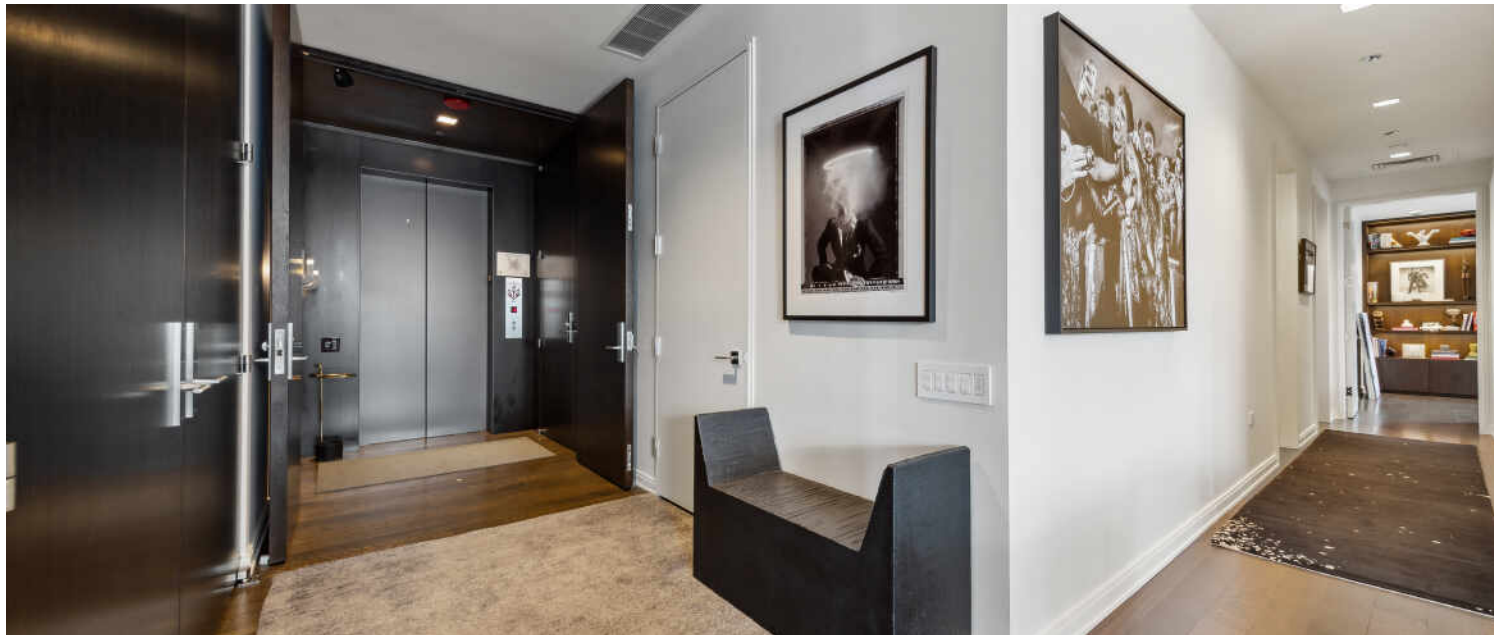
@properties®

CHRISTIE'S
INTERNATIONAL REAL ESTATE

LP LUXURY
PORTFOLIO
INTERNATIONAL®



FOYER



ENTRYWAY

4 E ELM STREET #18S RARE OPPORTUNITY TO OWN ARCHITECTURAL DIGEST
WORTHY, HALF FLOOR CONDO WITH BEST VIEWS OF CHICAGO

ROOM DIMENSIONS

Foyer	6'x55'
Living Room	16'x16'
Dining Room	15'x14'
Breakfast Nook	10'x18'
Family Room	18'x11'
Kitchen	20'x16'
Office	13'x13'
Balcony	14'x10'
Primary Bedroom	15'x20'
WIC	8'x17'
WIC	7'x8'
2nd Bedroom	14'x13'
3rd Bedroom	15'x14'
Laundry Room	16'x7'

FEATURES

Designed by Gary Lee and winner of the 2019 International Interior Design Association Award, this unique home is cosmopolitan living at its finest on a high floor, South facing Unit at 4 E. Elm, the newest boutique luxury condo building in the Gold Coast. The unit lives big with a huge primary suite, 2 en-suite bedrooms, a large open living/dining/family/library area for top-notch entertaining, a generous office and a fully equipped laundry room; all with 10 ft ceilings and floor to ceiling windows on all sides. Private elevator opens directly into a sophisticated foyer with breathtaking views of Rush and State streets and the Chicago skyline. Living/dining/family/library areas are appointed with custom bronze, stone and Wenge architectural elements and can function as one space for large-scale entertaining. The open kitchen and dedicated bar feature marble and quartz countertops, full height lacquer and exotic wood Florense cabinets, complete with walnut custom inserts and pull-outs, as well as top of the line appliances. The primary suite includes 2 walk-in closets, private teak deck with expansive lake and Oak St. views, and a spa caliber bathroom with TV, steam shower, tub, custom shelving and a separate room equipped with a Toto Japanese toilet. The office acts as a real sanctuary with wood paneling, extensive built-ins and a generous sitting area. Highest quality fixtures and materials throughout, including Alison Berger, Holly Hunt, Jean de Merry, Lee Joffa, Caste. Smart-home integration in every room - Lutron recessed motorized shades and curtains, Lutron lighting controls, Control4 AV, Nest security, private Tesla charger.



PHIL SKOWRON BROKER

312.612.0303 mobile phil@philskowron.com
www.philskowron.com



DINING ROOM



DINING ROOM



LIVING ROOM



LIVING ROOM



LIVING ROOM



LIVING ROOM



LIVING ROOM



LIVING ROOM



LIVING ROOM/DINING ROOM



LIVING ROOM/FAMILY ROOM



FAMILY ROOM



FAMILY ROOM



KITCHEN/FAMILY ROOM



FAMILY ROOM



FAMILY ROOM



KITCHEN



KITCHEN



DECK



PRIMARY BEDROOM



PRIMARY BEDROOM



DECK



DECK



PRIMARY BEDROOM



PRIMARY BEDROOM CLOSET



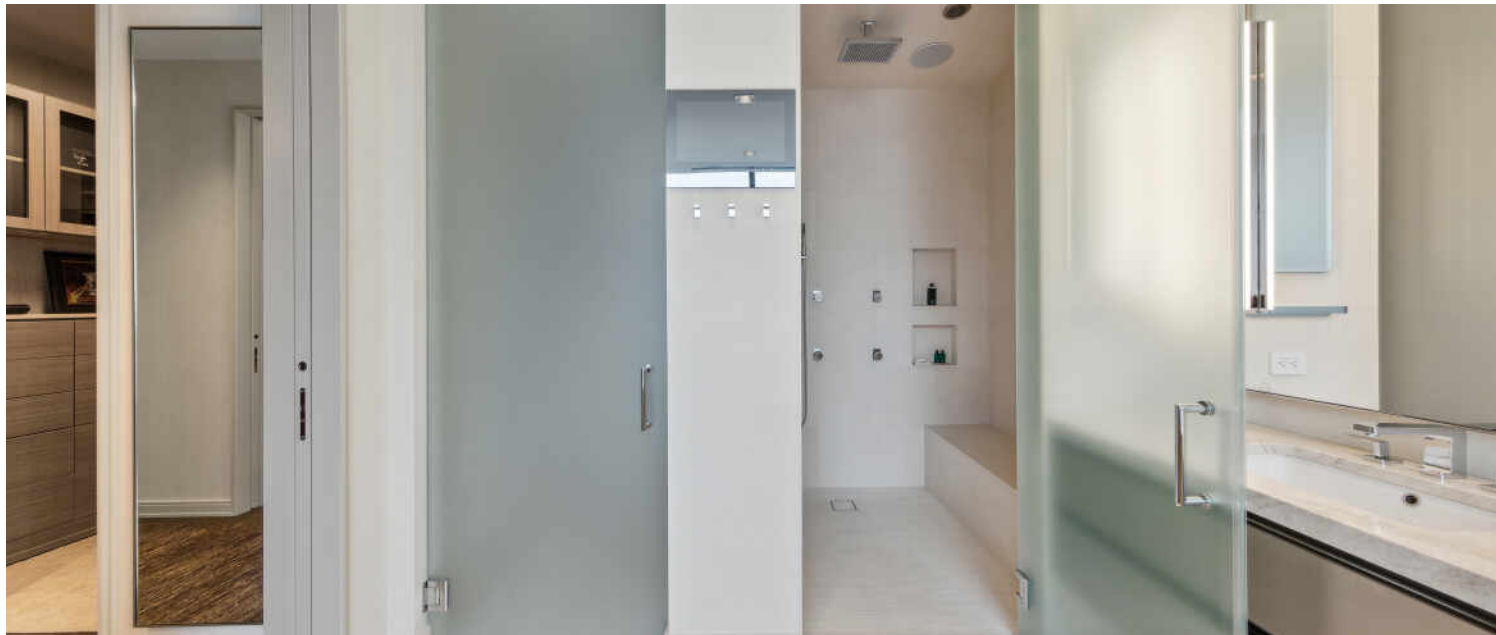
PRIMARY BEDROOM CLOSET



PRIMARY BATHROOM



PRIMARY BATHROOM



PRIMARY BATHROOM



STUDY



STUDY



STUDY



3RD BEDROOM



BATHROOM



LAUNDRY ROOM



2ND BEDROOM



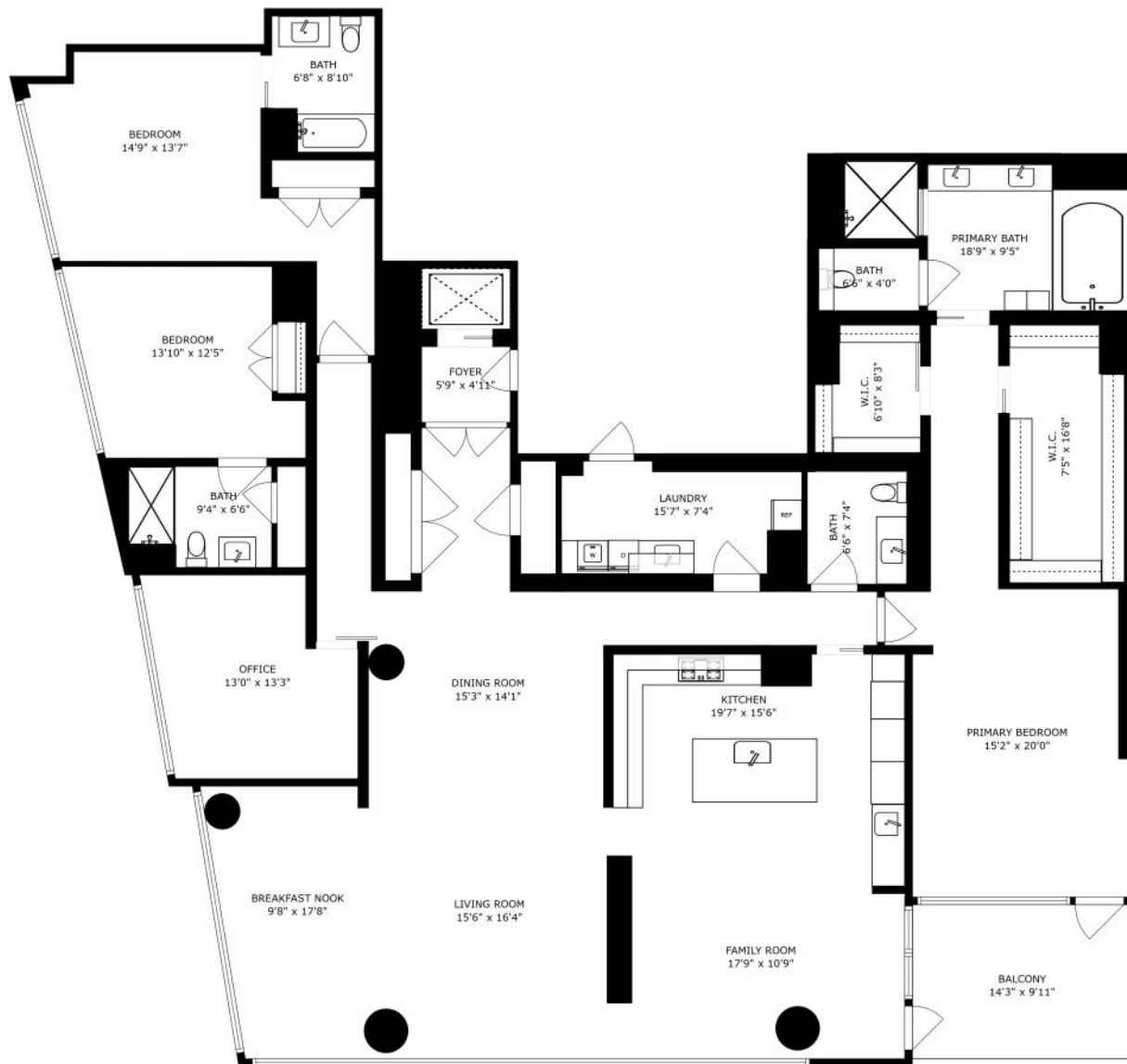
2ND BATHROOM



3RD BEDROOM



3RD BATHROOM



SIZES AND DIMENSIONS ARE APPROXIMATE, ACTUAL MAY VARY.









WHEN YOU REACH THE **GOLD COAST**, YOU KNOW YOU HAVE ARRIVED.

Locals love the neighborhood's mix of vintage and modern architecture, world-class shopping and dining, and easy access to Chicago's lakefront parks and beaches.

In Chicago's ultimate luxury neighborhood, you'll find lively beaches, internationally renowned boutiques, incredible cuisine, and vibrant nightlife, as well as beautiful parks and attractions.

Residents live among the best experiences the city has to offer. A day in the Gold Coast might include a venture down Michigan Avenue, a day at the beach, and shopping along Oak Street, followed by dinner at an award-winning restaurant.

From the stately mansions on Astor Street to the magnificent high-rises overlooking the lake, the Gold Coast also features a surprising variety of housing choices. In addition to the historic apartment buildings that line Lake Shore Drive, there are walk-ups, townhomes, and a number of contemporary high-rises with all the modern amenities.

For those heading to work downtown, their “commute” is about as convenient as it gets when it comes to city living.





PRIMARY BEDROOM

