



4 S CLAY STREET HINSDALE



4 S CLAY STREET · HINSDALE

@properties | CHRISTIE'S  
INTERNATIONAL REAL ESTATE

LUXURY  
PORTFOLIO  
INTERNATIONAL



LARYSA DOMINO REAL ESTATE BROKER, MBA, CPA

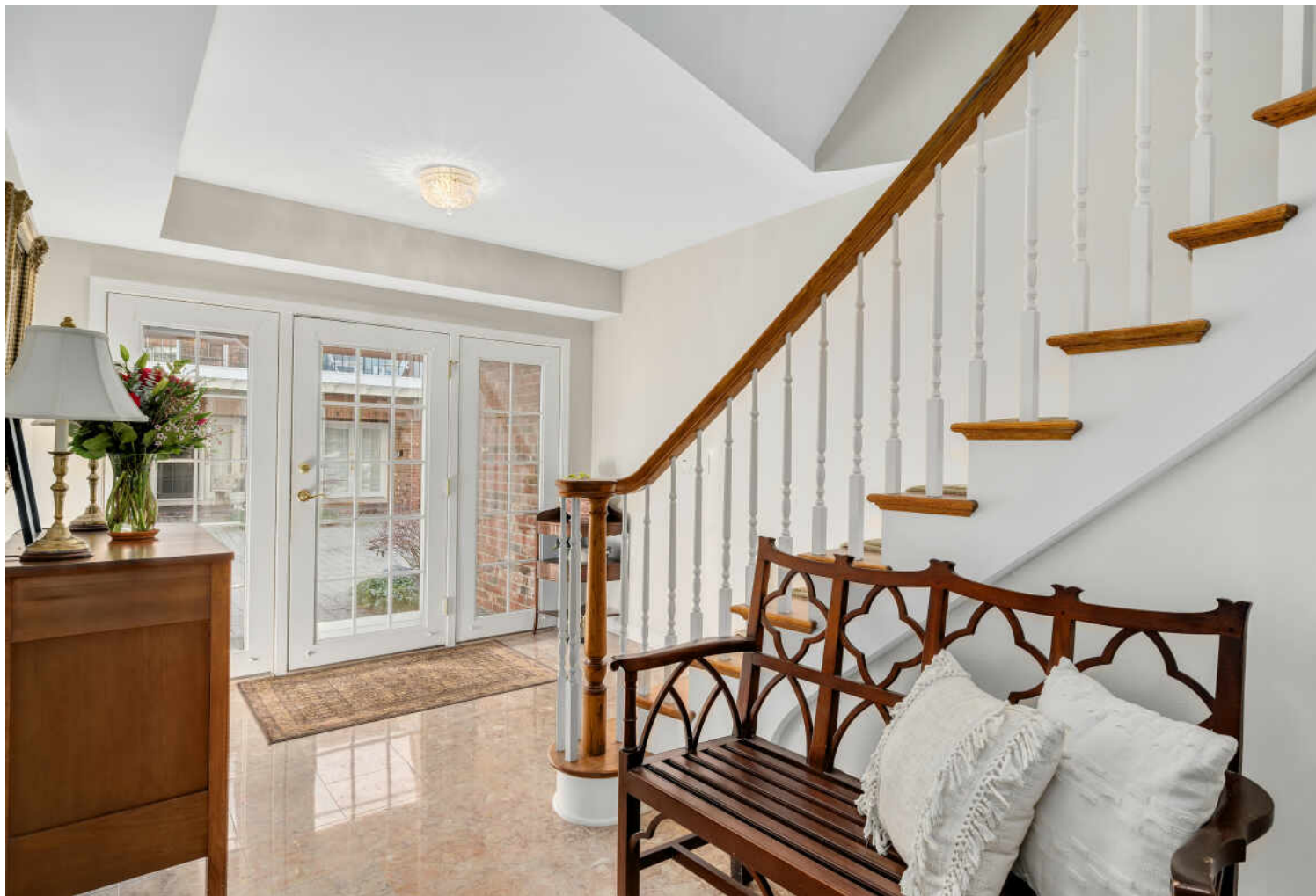
630.561.8331 mobile  
larysadamino@atproperties.com

LARYSA DOMINO  
GROUP



4 S CLAY STREET • HINSDALE







**4 S CLAY STREET | HINSDALE| EXCELLENT IN-TOWN LOCATION WITH ELEVATOR**

**ROOM DIMENSIONS**

Foyer .....	10'x18'
Living Room .....	19'x19'
Dining Room .....	12'x15'
Kitchen .....	21'x12'
Breakfast Room .....	10'x9'
Office .....	12'x14'
Primary Bedroom .....	15'x20'
Second Bedroom .....	12'x24'
Third Bedroom .....	10'x20'
Fourth Bedroom .....	10'x20'

**FEATURES**

Rarely available townhome with maintenance-free living in the perfect downtown Hinsdale location! A private in-unit elevator allows easy access to all 3 stories of this gorgeous renovated home. Light and bright with a wonderful open floor plan. The main level showcases an office, very spacious living room with cozy fireplace and built-ins, dining room perfect for entertaining, and renovated chef's kitchen with island seating, walk-in pantry, breakfast area, and a private balcony for additional dining. There is also a rear paver patio accessed via the office / living room, with ample room for a grill, dining and additional seating. The second level has 3 spacious bedrooms with 2 full bathrooms and the laundry. The spacious primary suite is renovated with vaulted ceilings, a wonderful fireplace, walk-in closet and a beautiful primary bath with heated floors. The lower level has the 4th bedroom (which can be used as an additional family room) and a full bathroom, with an oversized 2-car attached garage. Award winning Monroe Elementary School, Clarendon Hills Middle School, and nationally acclaimed Hinsdale Central. Seller pride in ownership shows in this immaculate home. Walk to everything that Hinsdale has to offer - steps to Kramer's, restaurants, town, and Metra Train!

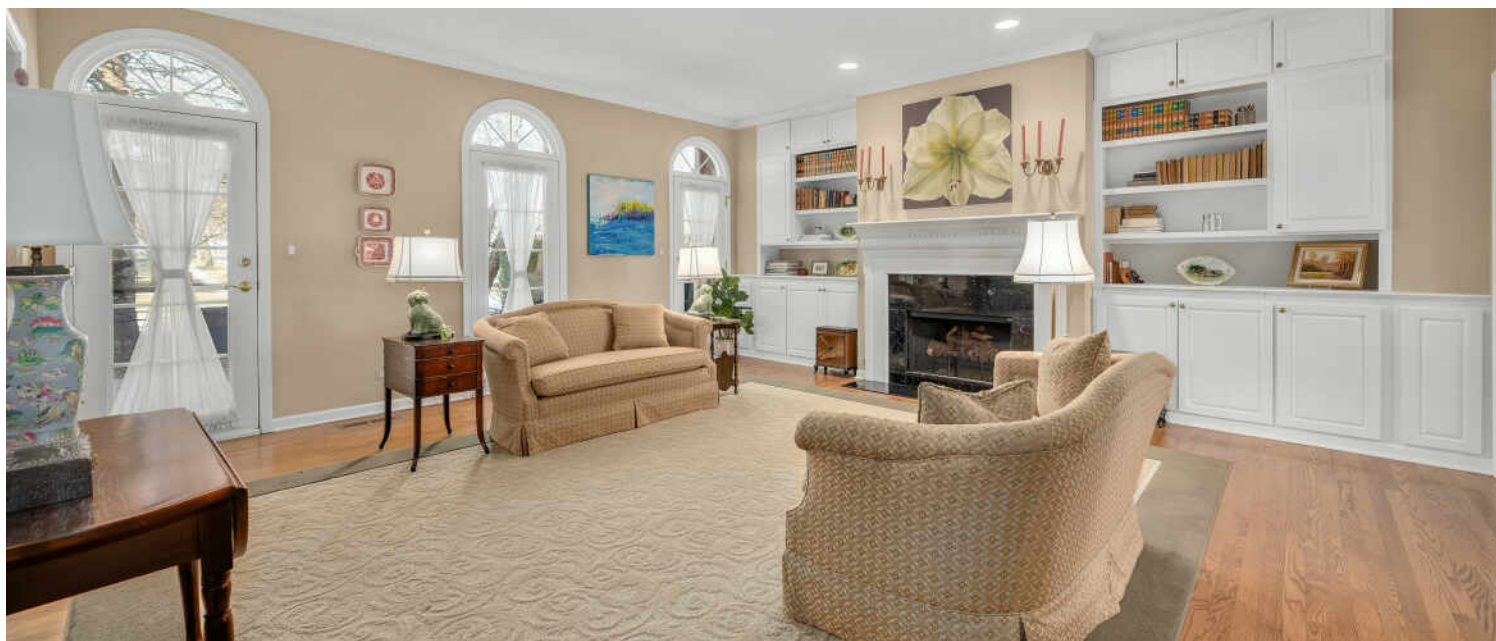
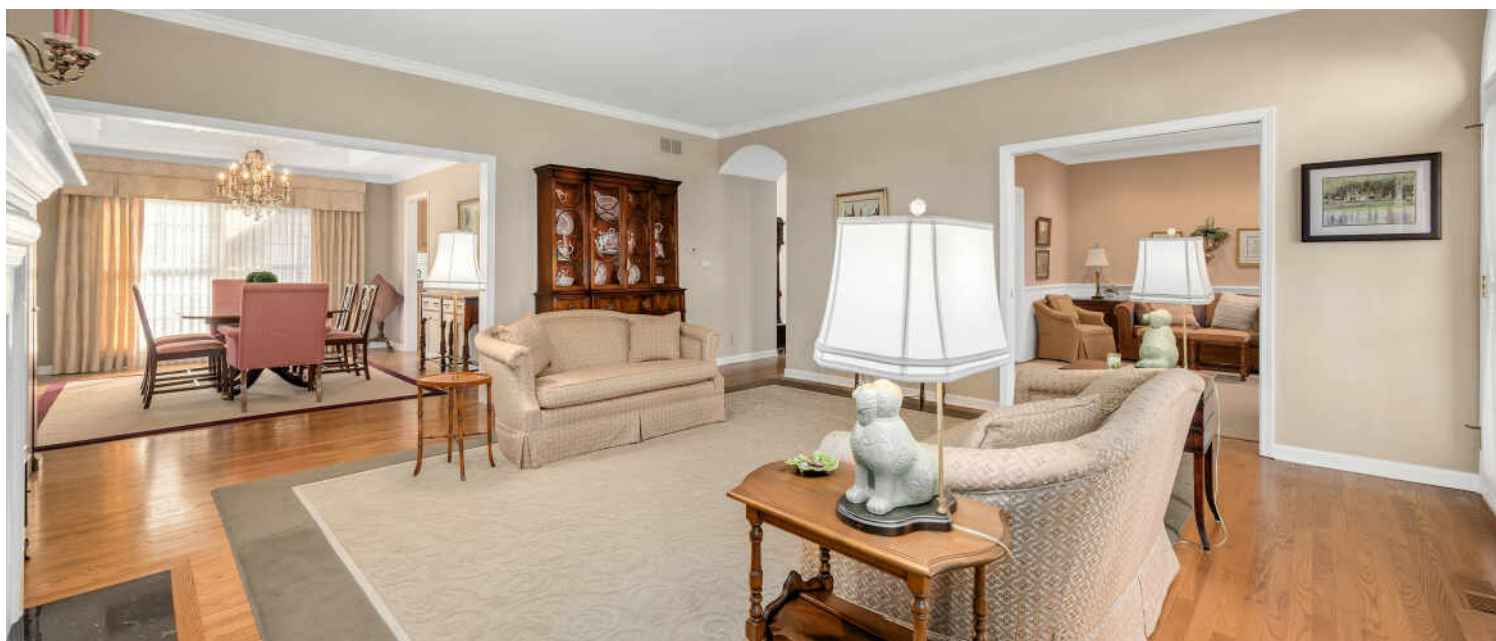


**LARYSA DOMINO** REAL ESTATE BROKER, MBA, CPA  
630.561.8331 mobile      larysadomino@atproperties.com











































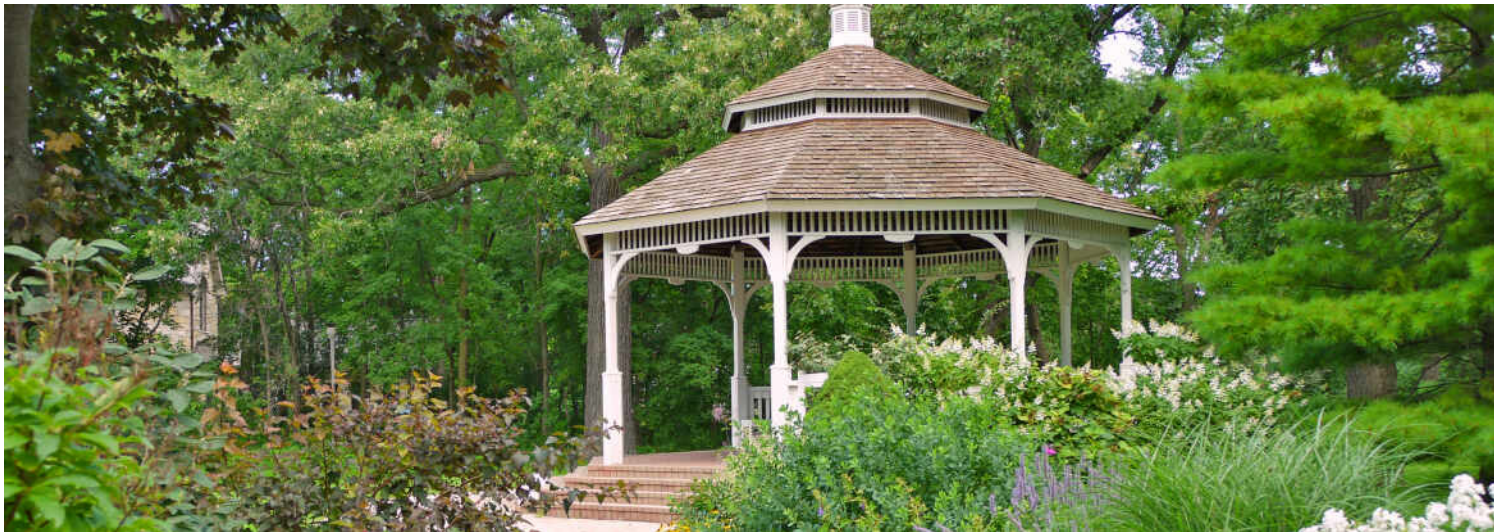












**HINSDALE'S** HISTORIC DOWNTOWN AND BEAUTIFUL HOMES ATTRACT SOME OF THE STATE'S MOST AFFLUENT RESIDENTS, EARNING THE SUBURB ITS RANKING AS ONE OF THE WEALTHIEST ZIP CODES IN ILLINOIS.

*Locals love the natural beauty and historic elegance of Hinsdale, which boasts a number of scenic parks and architectural landmarks.*

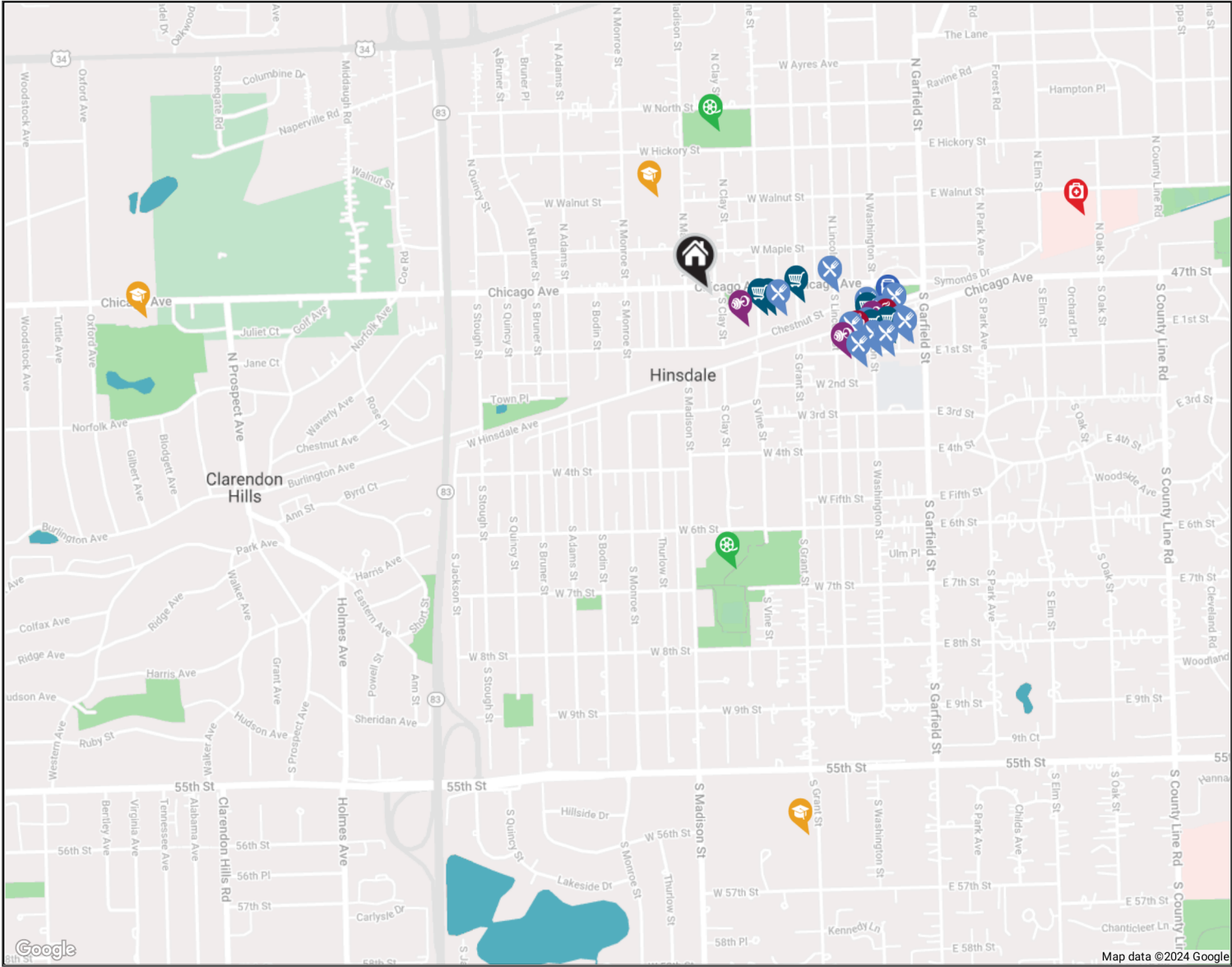
Downtown Hinsdale offers a step back in time. The downtown district is on the National Register of Historic Places, with several historic buildings dating back to before the community was incorporated in the 1870s. Residents and visitors will also find award-winning restaurants that will satisfy any palate along with a variety of shops, from jewelry stores and upscale boutiques to craft shops and more.

The community has a wealth of amenities such as the Hinsdale Community Swimming Pool, Katherine Legge Memorial Park, and Burlington Park, which is home to various annual events including the farmers market, Fine Arts Festival, and Uniquely Thursdays concert series. There are also numerous parks and athletic facilities for those who enjoy sports like tennis, baseball, and soccer.

Hinsdale has easy access to the Tri-State Tollway, Stevenson Expressway, and three train stations along Metra's BNSF Railway.



NEIGHBORHOOD GUIDE MAP



NEIGHBORHOOD GUIDE



RESTAURANTS

YiaYia's Cafe - Hinsdale  
13 GRANT SQUARE, 0.2 MI

Fontano's Subs  
9 SOUTH LINCOLN STREET, 0.3 MI

Altamura Pizza  
9 WEST 1ST STREET, 0.3 MI

Egg Harbor Cafe  
29 EAST 1ST STREET, 0.4 MI

Starbucks  
33 SOUTH WASHINGTON STREET, 0.4 MI

Vistro Prime  
112 SOUTH WASHINGTON STREET,  
0.4 MI

Il Poggiolo Ristorante  
8 EAST 1ST STREET, 0.4 MI

Nabuki  
18 EAST 1ST STREET, 0.4 MI

Toni Patisserie & Cafe  
51 SOUTH WASHINGTON STREET, 0.4 MI

Giuliano's Pizza  
40 VILLAGE PLACE, 0.4 MI

Page's Restaurant  
26 1/2 EAST HINSDALE AVENUE, 0.4 MI

Fuller House  
35 EAST 1ST STREET, 0.4 MI



COFFEE SHOPS

Einstein Bros. Bagels  
54 SOUTH WASHINGTON STREET, 0.3 MI

Cafe La Fortuna  
46 VILLAGE PLACE, 0.4 MI



SHOPPING

Walgreens  
15 GRANT SQUARE, 0.1 MI

Kramer Foods  
16 GRANT SQUARE, 0.1 MI

The UPS Store  
3 GRANT SQUARE, 0.2 MI

Stockholm Objects  
39 SOUTH WASHINGTON STREET, 0.4 MI

J.McLaughlin  
53 SOUTH WASHINGTON STREET, 0.4 MI

Bluemercury  
21 EAST 1ST STREET, 0.4 MI



HEALTH CLUBS

CorePower Yoga  
34 SOUTH VINE STREET, 0.1 MI

Energie Pilates & Spa  
18 WEST 1ST STREET, 0.3 MI

Inner Jasmine Yoga  
45 SOUTH WASHINGTON STREET #302,  
0.4 MI



HOSPITALS

UChicago Medicine  
AdventHealth Hinsdale  
120 N OAK ST, 0.8 MI



SCHOOLS

Monroe Elementary School  
210 NORTH MADISON STREET, 0.2 MI

Hinsdale Central High School  
5500 S GRANT ST, 1.1 MI

Clarendon Hills Middle School  
301 CHICAGO AVE, 1.2 MI



ENTERTAINMENT

Burns Field Park  
320 N VINE ST, 0.3 MI

Robbins Park  
S VINE ST & 7TH ST, 0.6 MI



TRANSIT

Hinsdale  
METRA - BNSF RAILWAY, 0.4 MI



@properties® | CHRISTIE'S  
INTERNATIONAL REAL ESTATE

*Leading* REAL ESTATE  
COMPANIES  
OF THE WORLD®

LP  
LUXURY  
PORTFOLIO  
INTERNATIONAL®

