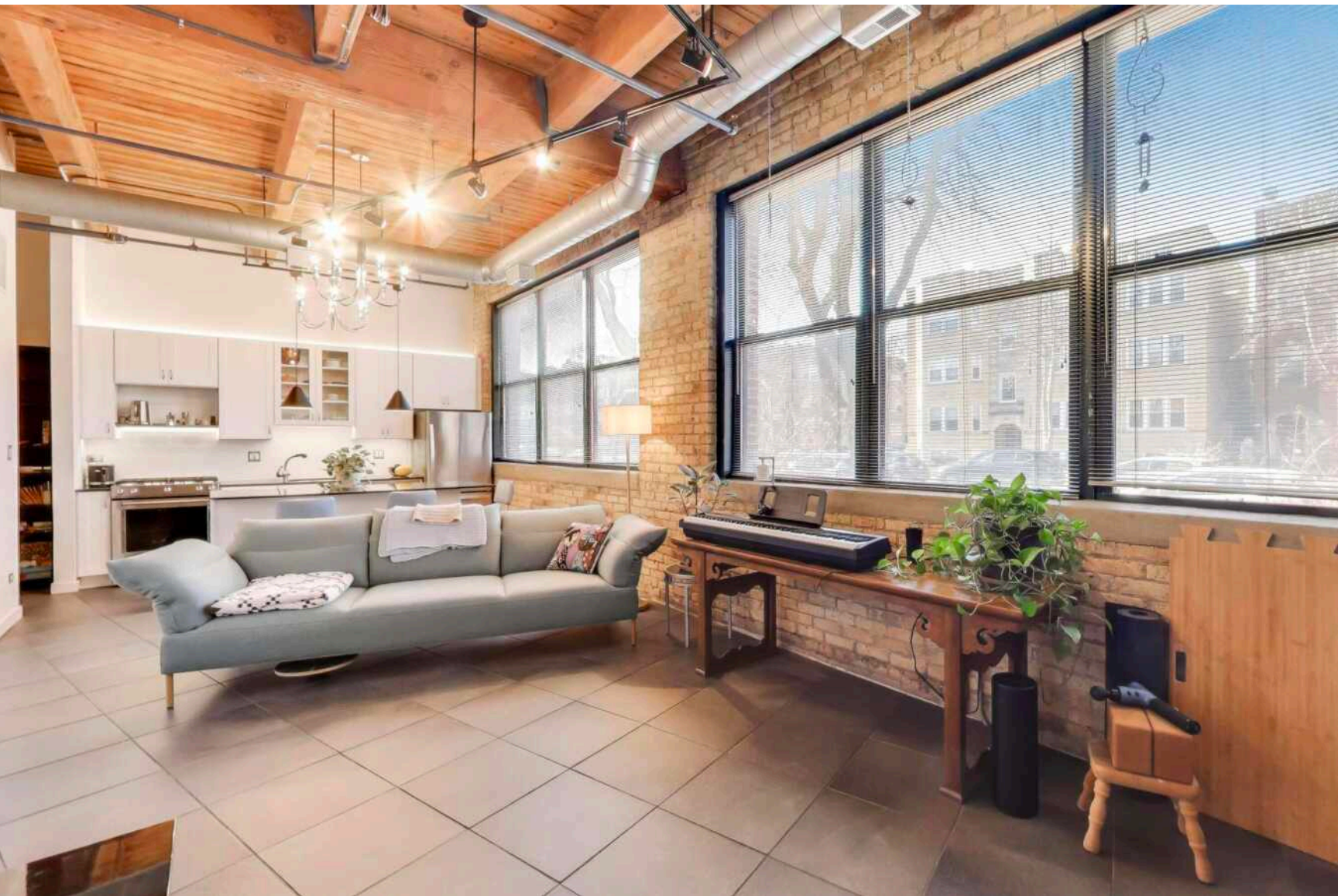


5001 N WOLCOTT AVENUE #101
RAVENSWOOD





ROOM DIMENSIONS

LIVING ROOM : 12' × 23'

KITCHEN : 12' × 7'

BEDROOM : 10' × 13'

CANDY FACTORY LOFTS

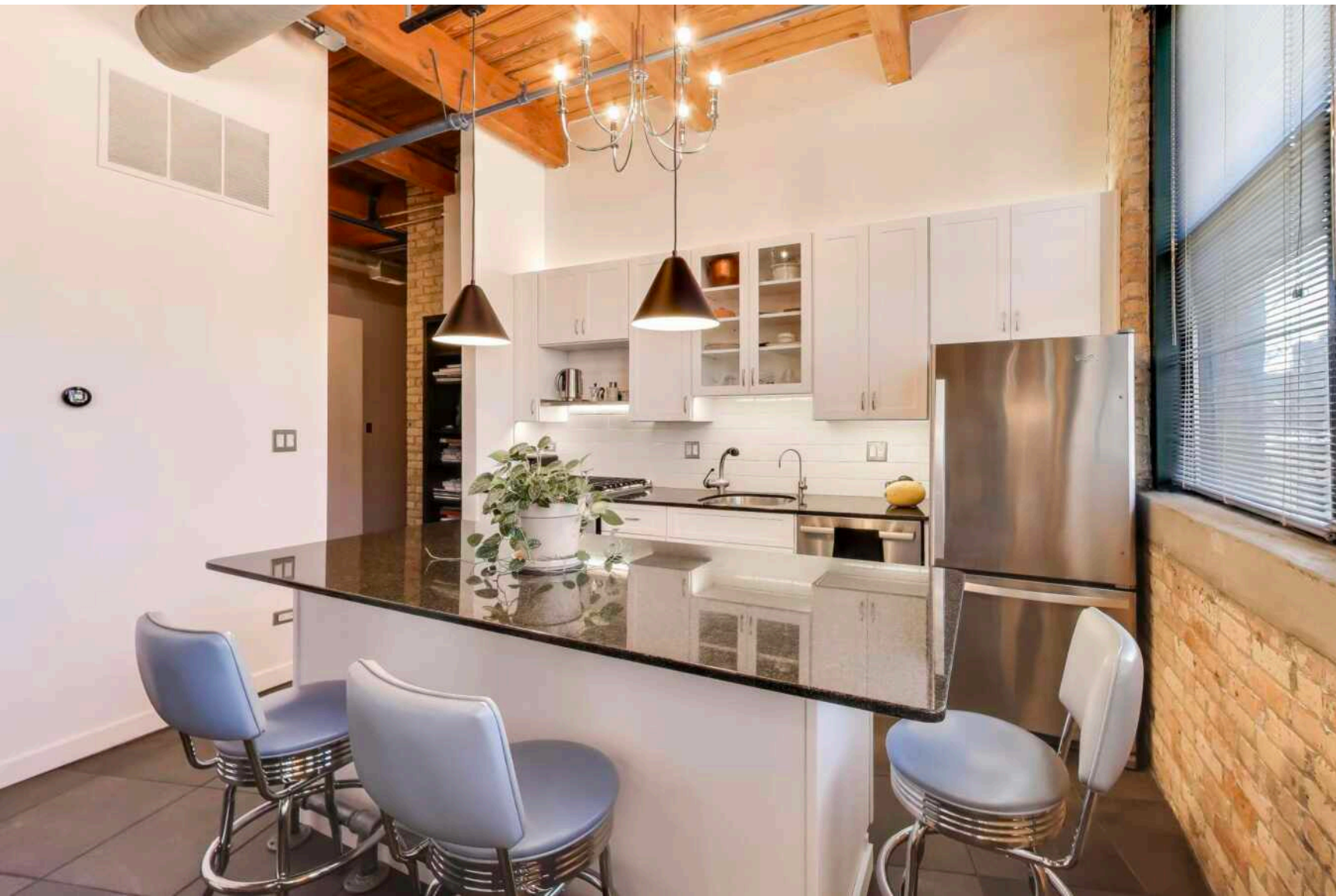
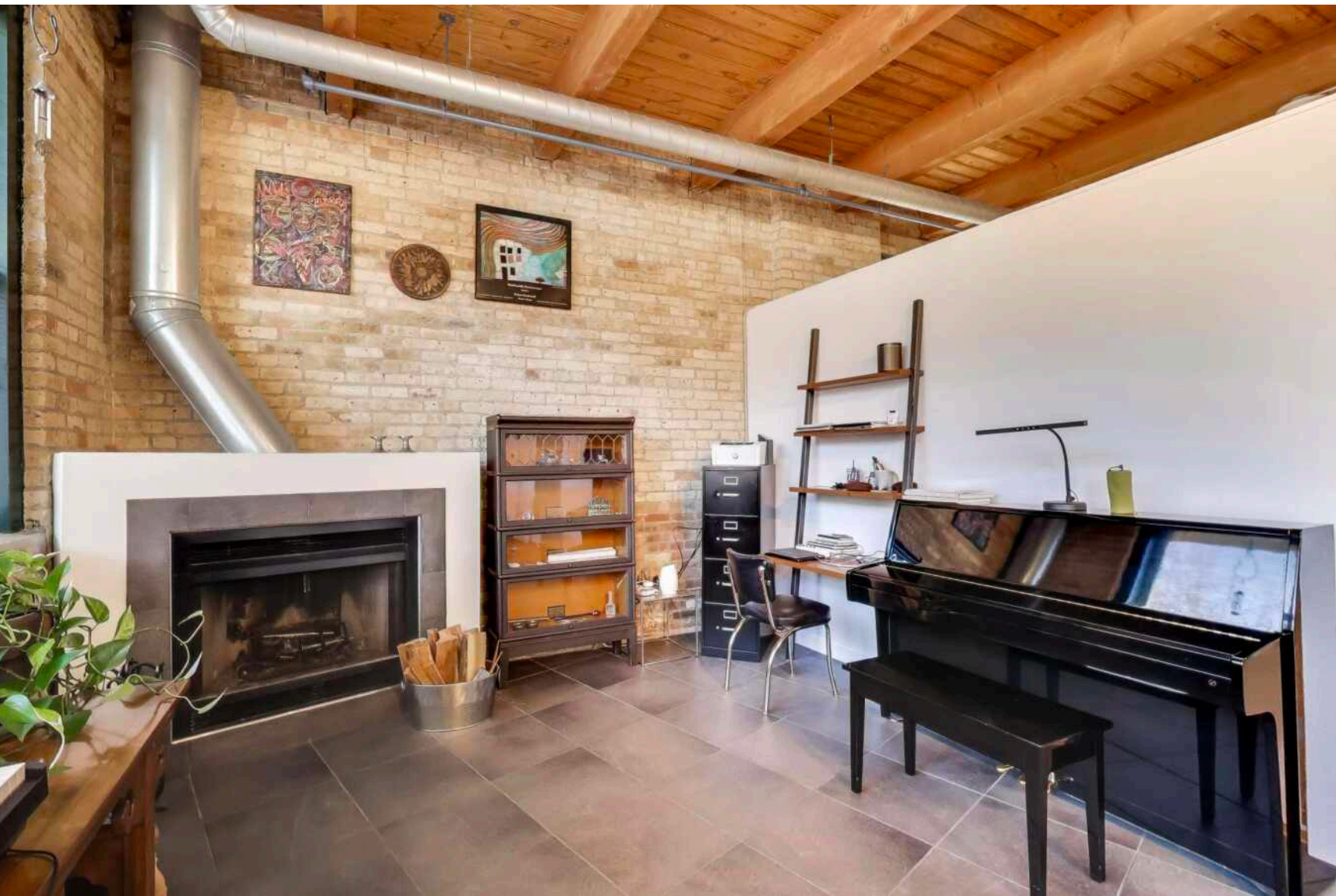
One-of-a-kind, fully renovated timber loft in the highly sought-after Candy Factory Lofts in Ravenswood. This residence seamlessly blends authentic loft character with modern updates, featuring soaring timber ceilings, exposed brick, and expansive west and north-facing windows that provide abundant natural light. The updated kitchen offers sleek cabinetry, new appliances, and ample space for both everyday living and entertaining. The refreshed bathroom showcases clean, contemporary finishes, and the home is complete with a new in-unit washer and dryer. Spacious primary bedroom and open-concept living area highlighted by a wood-burning fireplace and distinctive diagonal stone flooring. Additional features include central air, extra storage, and one exterior parking space included. Building amenities include a large, beautifully maintained common side yard-ideal for outdoor entertaining and relaxation. Conveniently located near the Ravenswood Metra, Damen Brown Line, Mariano's, Winnemac Park, and the shops, dining, and nightlife of Lincoln Square and Ravenswood.

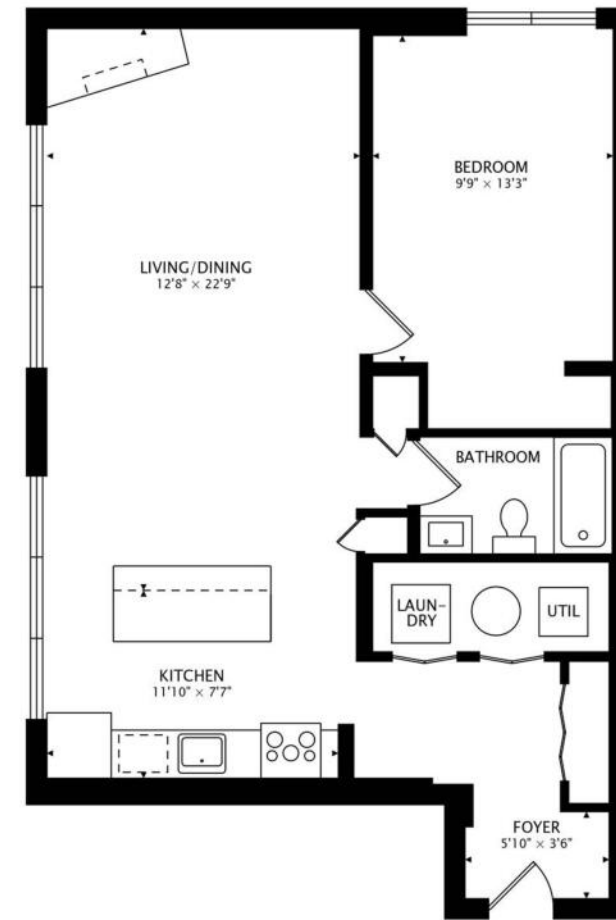
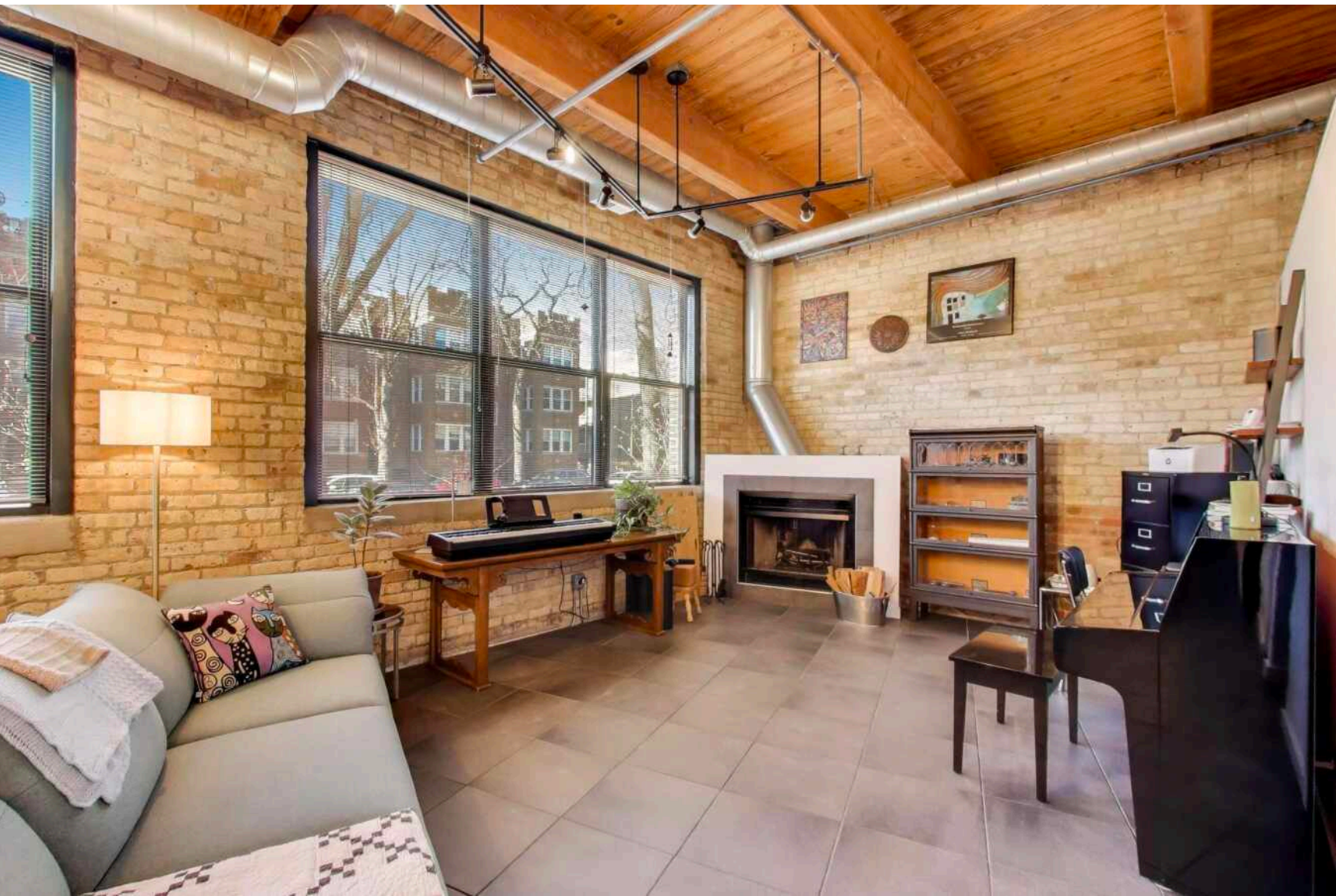
1 BEDROOM

1 BATH

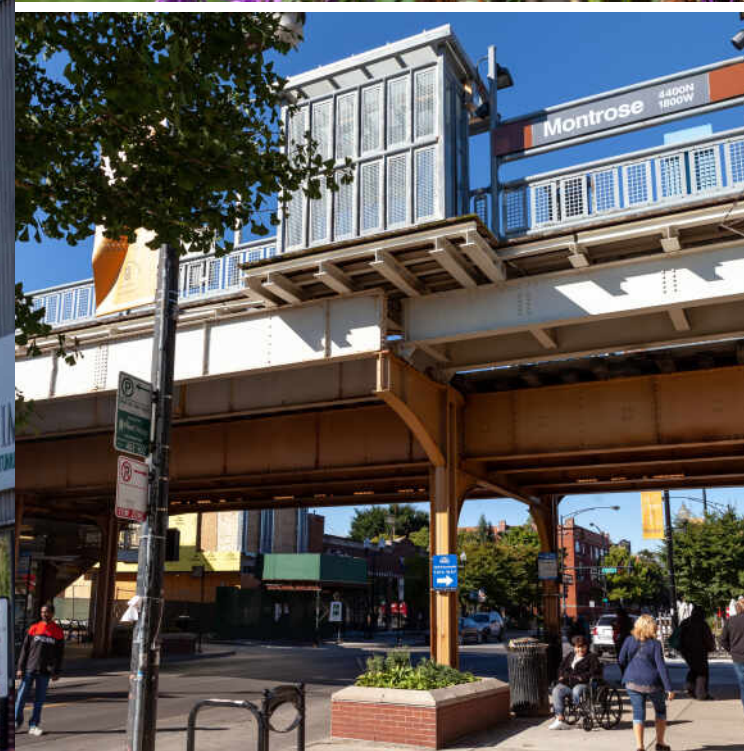
TAXES: \$4590

ASSESSMENTS: \$276





801 sq ft



RAVENSWOOD DEFIES DEFINITION.

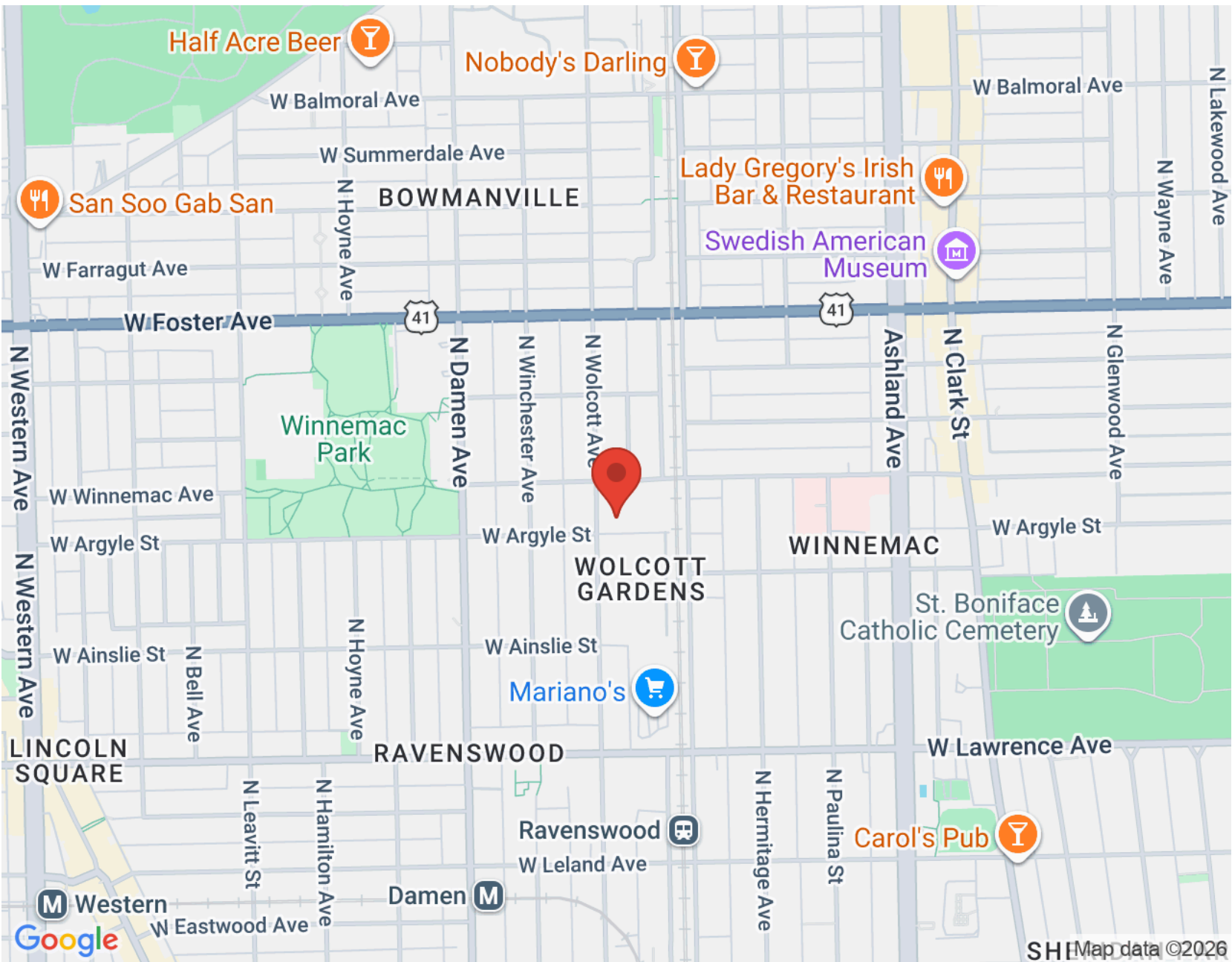
Although nearby neighborhoods may claim it as their own, the North Side neighborhood has its own unique feel.

Bordered by Foster Avenue, Montrose Avenue, Clark Street, and the Chicago River, the wooded area was home to ravens when real estate speculators saw its potential as an exclusive commuter suburb. The neighborhood became that and so much more after it was annexed to the City of Chicago in 1889.

The community has also established itself as a creative hub. Once its machine shops moved on and factories shuttered, artists moved in. Today, artists of all kinds thrive in the neighborhood - from microbrewers and distillers to furniture makers, metalworkers, and performers. The community is home to an architectural artifact salvage firm that occupies a warehouse from the early 1900s, and a wedding and event venue that is housed in a former factory with sweeping windows.

When it comes to housing, Ravenswood features spacious lots on tree-lined streets. Homes include courtyard buildings, Victorian and Prairie School homes, brick row houses, two- and three-flats, single-family homes, lofts, and condominiums. Many homes have been rehabbed to add modern amenities while retaining their vintage charm.

As early developers imagined, the neighborhood's convenient location just 10 miles from downtown makes it a popular choice for commuters. Public transportation includes multiple CTA bus routes, nearby CTA Brown Line stops, and the Ravenswood Metra station. Various local events also make Ravenswood a destination for residents of surrounding communities. Each year the community hosts Taste of Ravenswood, Ravenswood ArtWalk, and Ravenswood On Tap, featuring live music and craft beer.



NOTES _____



JONATHON SPRADLING

312.888.6197

JSPRADLING@ATPROPERTIES.COM

WWW.CHICAGOLUXELIVING.COM

Spradling | Roberts

chicagoluxeliving.com



JASON M ROBERTS

1 3125133344

JMROBERTS@ATPROPERTIES.COM

WWW.CHICAGOLUXELIVING.COM