



500 AUVERGNE PLACE RIVER FOREST



@properties | CHRISTIE'S
INTERNATIONAL REAL ESTATE

LP LUXURY
PORTFOLIO
INTERNATIONAL

500 AUVERGNE PLACE • RIVER FOREST



ZAK KNEBEL BROKER

1 7732909293 mobile
708.848.0200 office
zknebel@atproperties.com

Z | K GROUP



CAMILLE HOOVER BROKER

1 7082071214 mobile
708.848.0200 office
CamilleH@atproperties.com
camillehooverhomes.com

500 AUVERGNE PLACE • RIVER FOREST





500 AUVERGNE PLACE

ROOM DIMENSIONS

Living Room	14'x17'
Family Room	24'x20'
Dining Room	15'x16'
Kitchen	15'x17'
Primary Bedroom	13'x20'
Second Bedroom	12'x10'
Third Bedroom	16'x10'
Fourth Bedroom	10'x14'
Rec Room	15'x22'

FEATURES

Tucked behind the historic Waller Gates on Auvergne Place, this home offers an impressive mix of livable space and resort-style outdoor amenities. The private backyard is thoughtfully designed with bluestone patios and walkways, an in-ground pool, multiple areas for entertaining, a pergola, a deck off the kitchen, and a convenient pool room for storage and changing. Inside, the home features a flexible and well-designed floor plan. A beautiful first-floor family room with custom built-ins and a wet bar, along with a modern kitchen featuring quartz countertops and an island, formal dining room, separate living room, and a large first-floor office that could function as a main-level primary bedroom. A mudroom with generous storage connects directly to the garage. The second floor offers four spacious bedrooms and two full baths, including a private primary suite. A finished basement provides additional living space with a full bath, laundry area, and updated flooring. An excellent location close to the Metra, Lincoln Elementary, and an easy route straight down Lake Street to Whole Foods, Jewel, River Forest Town Square and Downtown Oak Park completes the package.



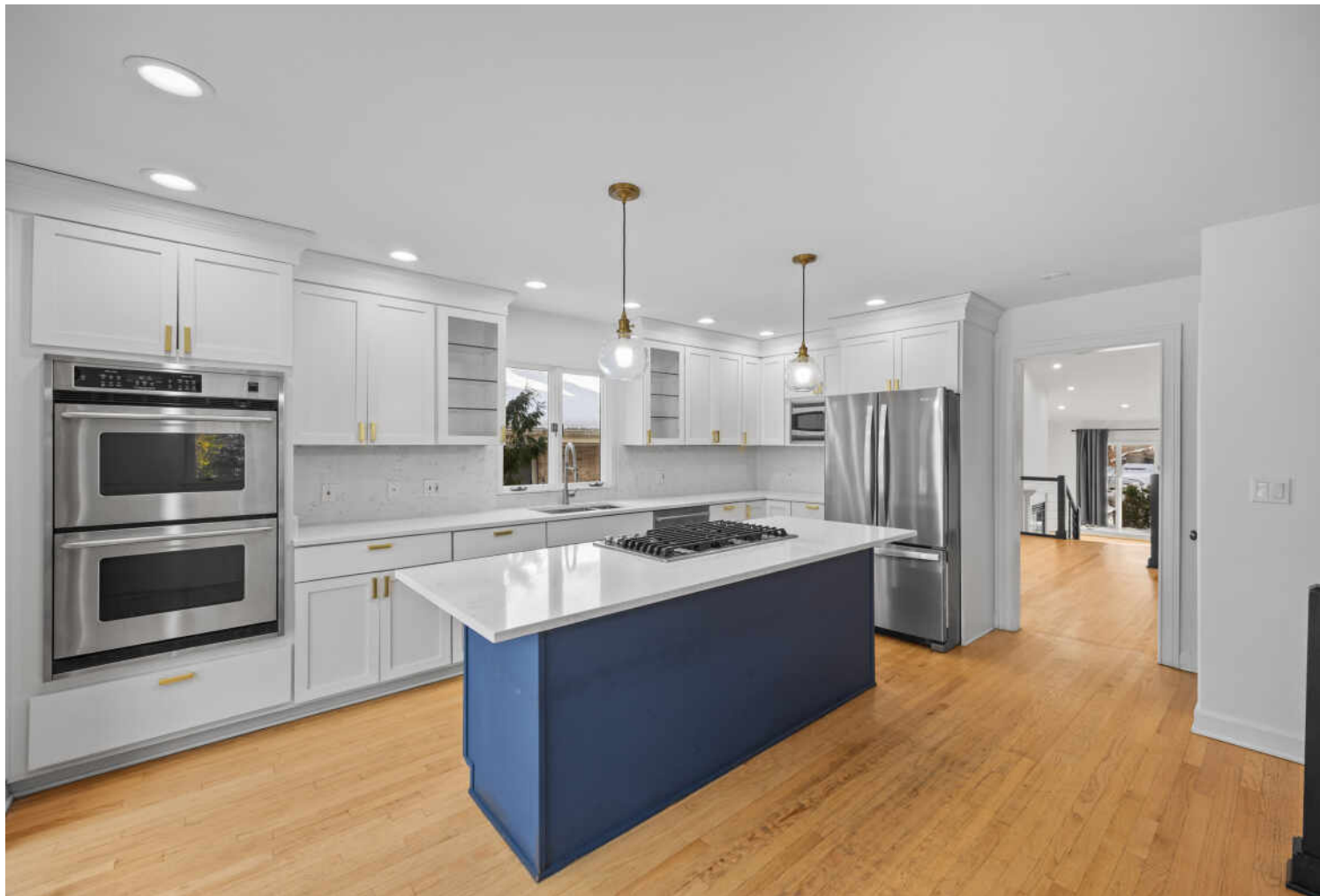
ZAK KNEBEL BROKER

1 7732909293 mobile
708.848.0200 office
zknebel@atproperties.com



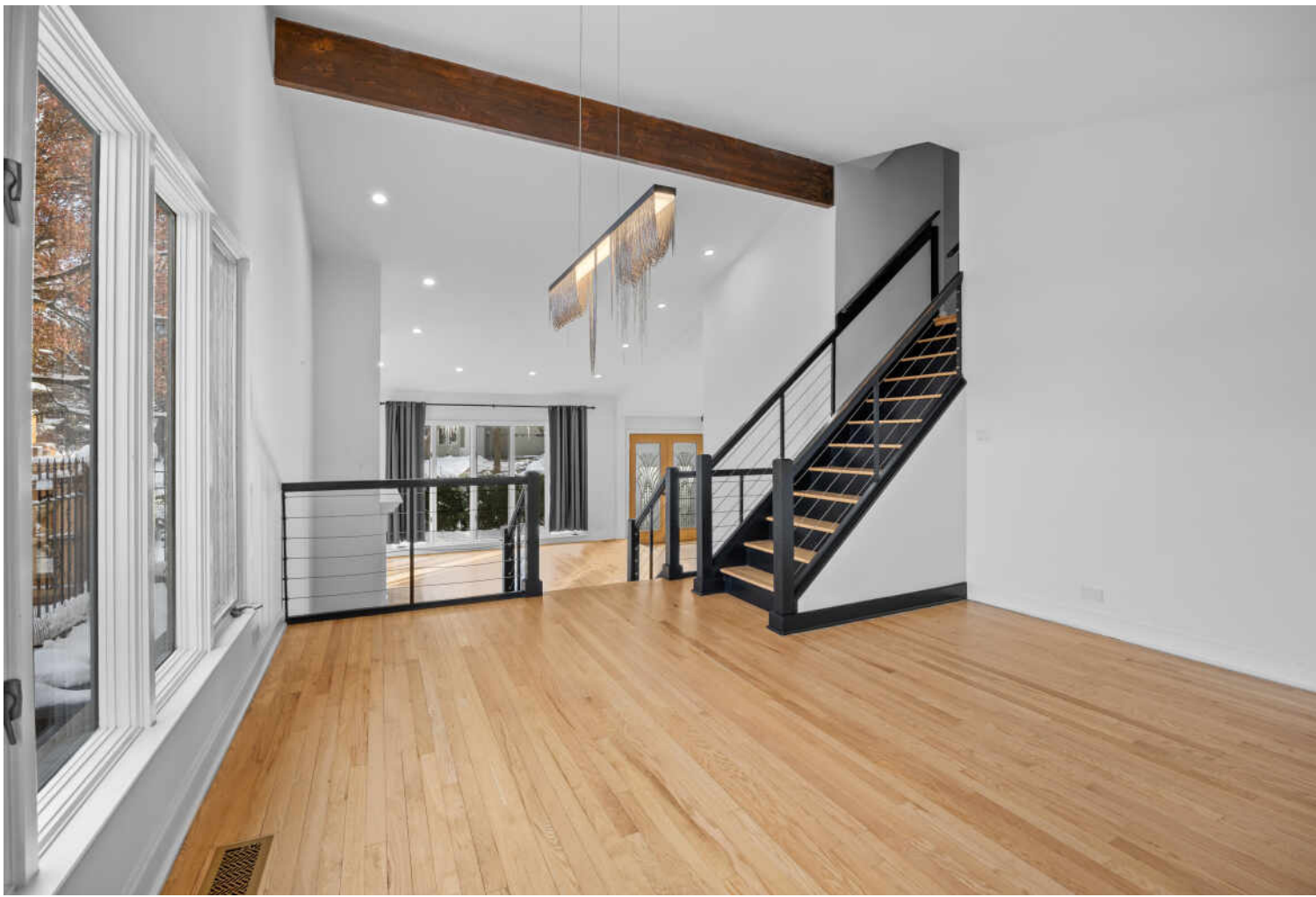
CAMILLE HOOVER BROKER

1 7082071214 mobile
708.848.0200 office
CamilleH@atproperties.com
camillehooverhomes.com

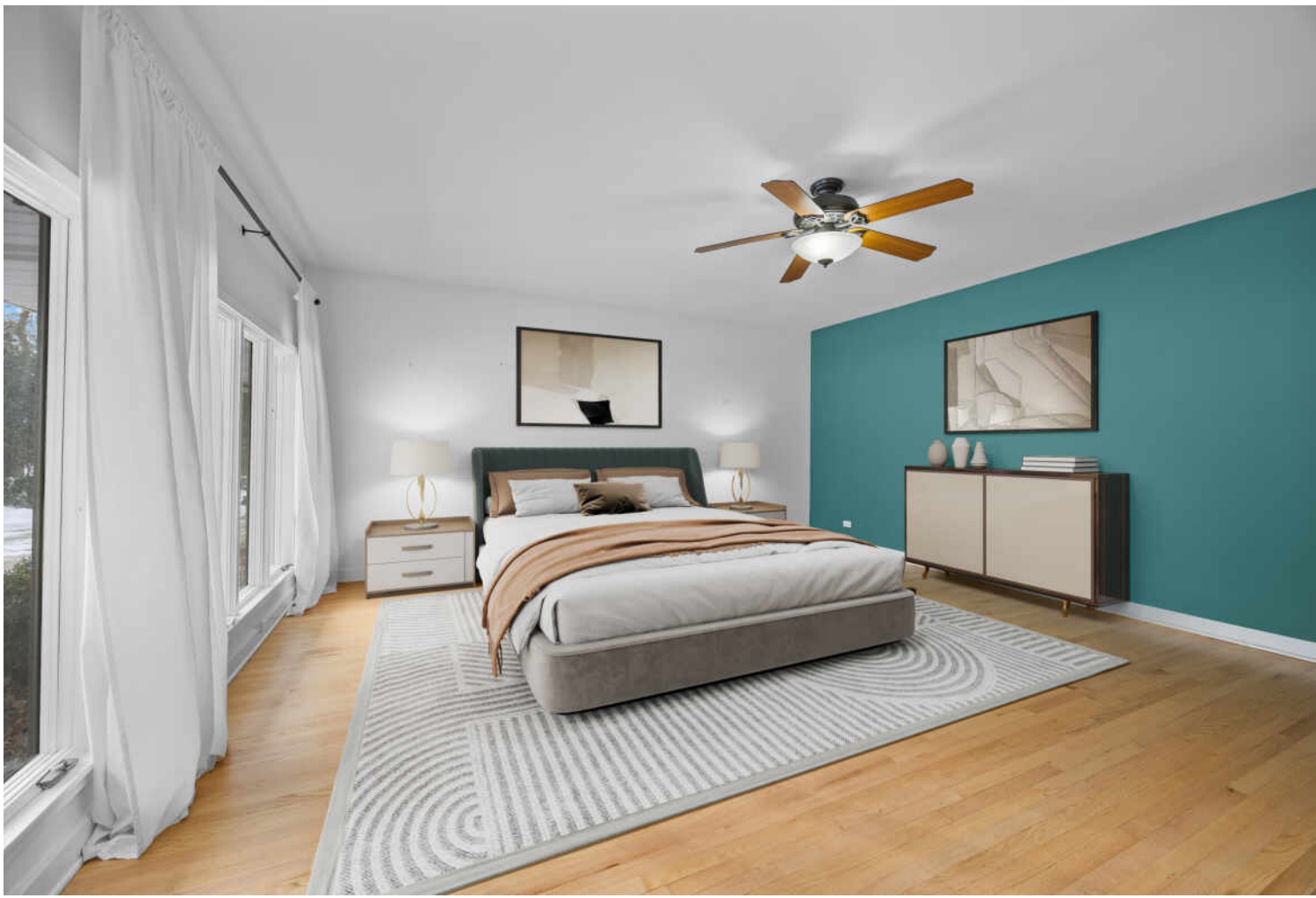




























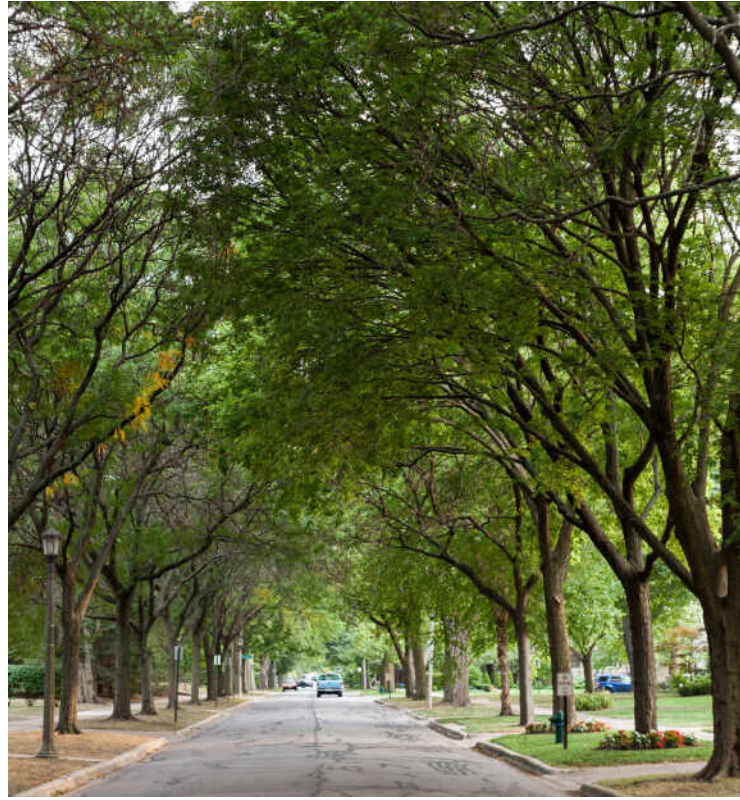
Floor Plan Created By Cubicasa App. Measurements Deemed Highly Reliable But Not Guaranteed.



Floor Plan Created By Cubicasa App. Measurements Deemed Highly Reliable But Not Guaranteed.



Floor Plan Created By Cubicasa App. Measurements Deemed Highly Reliable But Not Guaranteed.



THE VILLAGE OF **RIVER FOREST** IS COMMITTED TO PRESERVING ITS HERITAGE.

Locals love the great outdoors, with the park district maintaining several parks, athletic facilities, and paths. The community is also home to a robust historic district.

There are several structures designed by renowned architects, including Frank Lloyd Wright, who built the Winslow House here in 1893.

A total of 860 properties are in the village's historic district, embodying styles such as Gothic Revival, Victoria, Prairie School, Tudor Revival, Bungalows, Buurma Built, Art Deco, and Modern. Additional noteworthy architects who left their mark on River Forest include William Drummond, Spencer and Powers, and E.E. Roberts.

River Forest was originally part of a larger community that included parts of Oak Park and Forest Park before it incorporated on its own in 1880. The villages remain connected through cultural programs. The Oak Park and River Forest Performing Arts Center has long hosted stage productions by Circle Theatre and Festival Theatre.

The River Forest Park District offers facilities hosting an array of activities, including 10 parks with baseball fields, paths, a sledding hill, and a climbing wall. Residents enjoy wide-open spaces and three miles of Cook County Forest Preserve trails that surround the community.

The map displays the following bus stop locations:

- Region 1 (North):** 1, 2, 3, 4, 5, 6, 7, 8, 9, 10, 11, 12, 13, 14, 15, 16, 17, 18, 19, 20, 21, 22, 23, 24, 25, 26, 27, 28, 29, 30, 31, 32, 33, 34, 35, 36, 37, 38, 39, 40, 41, 42, 43, 44, 45, 46, 47, 48, 49, 50, 51, 52, 53, 54, 55, 56.
- Region 2 (Central):** 1, 2, 3, 4, 5, 6, 7, 8, 9, 10, 11, 12, 13, 14, 15, 16, 17, 18, 19, 20, 21, 22, 23, 24, 25, 26, 27, 28, 29, 30, 31, 32, 33, 34, 35, 36, 37, 38, 39, 40, 41, 42, 43, 44, 45, 46, 47, 48, 49, 50, 51, 52, 53, 54, 55, 56.
- Region 3 (South):** 1, 2, 3, 4, 5, 6, 7, 8, 9, 10, 11, 12, 13, 14, 15, 16, 17, 18, 19, 20, 21, 22, 23, 24, 25, 26, 27, 28, 29, 30, 31, 32, 33, 34, 35, 36, 37, 38, 39, 40, 41, 42, 43, 44, 45, 46, 47, 48, 49, 50, 51, 52, 53, 54, 55, 56.

The map also includes a home icon, a scale bar, and a Google logo.

NEIGHBORHOOD GUIDE

RESTAURANTS

- 1 Bertollis River Pizza
7973 LAKE STREET, 0.2 MI
- 2 Submarine Tender
200 DES PLAINES AVENUE, 1.0 MI
- 3 Old School Tavern
201 DES PLAINES AVENUE, 1.0 MI
- 4 Caffè De Luca
7427 MADISON STREET, 1.1 MI
- 5 Jimmy's Place
7411 W MADISON STREET, 1.1 MI
- 6 NRebozo (MP-10278)
7403 MADISON STREET, 1.2 MI
- 7 Penny's Oak Park
1130 CHICAGO AVENUE, 1.3 MI
- 8 Chipotle Mexican Grill
1128 LAKE STREET, 1.3 MI
- 9 Jerusalem Cafe Grill Restaurant
1030 LAKE STREET, 1.4 MI

COFFEE

- 1 Black Fodder Coffee
349 ASHLAND AVENUE, 0.7 MI
- 2 Starbucks
7525 LAKE STREET, 0.8 MI
- 3 Kribi Coffee Air Roastery
7324 MADISON ST, 1.3 MI
- 4 Broken Tart
1108 CHICAGO AVE, 1.4 MI

GROCERY

- 1 Jewel-Osco
7525 LAKE STREET, 0.8 MI
- 2 Whole Foods Market
7245 LAKE STREET, 1.2 MI
- 3 Trader Joe's
483 NORTH HARLEM AVENUE, 1.3 MI
- 4 ALDI
215 HARLEM AVENUE, 1.3 MI
- 5 Target Grocery
1129 LAKE STREET, 1.3 MI

GYM

- 1 Analog Yoga
400 ASHLAND AVENUE, 0.7 MI
- 2 FFC Oak Park
1114 LAKE STREET, 1.3 MI
- 3 BODYBAR Pilates - Oak Park
106 NORTH MAPLE AVENUE, 1.3 MI

SCHOOLS

- 1 Lincoln Elementary School
511 PARK AVE, 0.5 MI
- 2 St. Luke School
519 ASHLAND AVENUE, 0.7 MI

TRANSIT

- 1 River Forest
METRA - MILWAUKEE DISTRICT WEST, 0.2 MI
- 2 Harlem/Lake
CTA - GREEN LINE, 1.3 MI

PARKS

- 1 Keystone Park
CENTRAL AVENUE, 0.3 MI
- 2 Trailside Museum of Natural History
738 THATCHER AVENUE, 0.4 MI
- 3 Washington Commons Park
222 FOREST AVENUE, 0.5 MI

SERVICES

- 1 River Forest Fire Department
400 PARK AVENUE, 0.5 MI
- 2 River Forest Public Library
735 LATHROP AVENUE, 0.8 MI

NO REPRESENTATIONS ARE MADE REGARDING THE ACCURACY OF THE INFORMATION PROVIDED.
ALL DATA IS SUBJECT TO CHANGE AND SHOULD BE VERIFIED WITH LOCAL SOURCES.

