

503 CHRISTY CIRCLE
GRAYSLAKE



@properties®



ROOM DIMENSIONS

- LIVING ROOM : 20' × 14'
- FAMILY ROOM : 16' × 18'
- DINING ROOM : 12' × 15'
- KITCHEN : 16' × 13'
- PRIMARY BEDROOM : 24' × 14'
- SECOND BEDROOM : 12' × 22'
- THIRD BEDROOM : 14' × 15'
- FOURTH BEDROOM : 14' × 20'
- OFFICE : 16' × 14'
- REC ROOM : 25' × 16'
- WORKROOM : 11' × 20'
- SUN ROOM : 16' × 23'

5 BEDROOM
3.5 BATH

EXQUISITE GRAYSLAKE CUSTOM HOME

Homes like this don't come along all that often. With 4 spacious bedrooms upstairs, a 5th bedroom or office on the first floor, 3.5 baths, and a finished basement with another flex space/bedroom, there is more than enough room for you to dream big! This custom built estate home features top of the line finishes, a park-like setting, and has been meticulously maintained by the original owners. Walking in the grand front door, the stately two-story foyer is flanked by the formal living room and formal dining room both with hardwood floors. Through the dining room is a butler's pantry opening to the spacious kitchen with large central island, high end cabinetry, Viking appliances, and granite counters. The same granite is used an accent in the tile kitchen and foyer floors. The kitchen opens to the family room with brick fireplace and hardwood floors. A bank of windows overlooks the almost 1/2 acre yard. Toward the 3 car garage is the laundry room and first floor office or bedroom- perfect for working from home! Right off the kitchen is a sunroom like no other-- a dreamy cottage three-season sunroom with vaulted ceilings and surrounded by windows overlooking the professionally landscaped backyard with mature trees providing ample shade! There's also a deck perfect for summer night overlooking perennial gardens and gorgeous trees. Upstairs, there are four spacious bedrooms. The primary bedroom has vaulted ceilings, walk in closet, and simply stunning ensuite bathroom with separate shower, soaking tub, and dual sinks. There's three more spacious bedrooms all with their own character and lots of closets. The basement is finished with a wet bar, family room perfect for a movie night with an additional area for another bedroom, office, or exercise room. Full bathroom in the basement! Lots of storage! There is not another home in Grayslake's West Trail neighborhood like this one. Don't miss the opportunity to make this one yours.











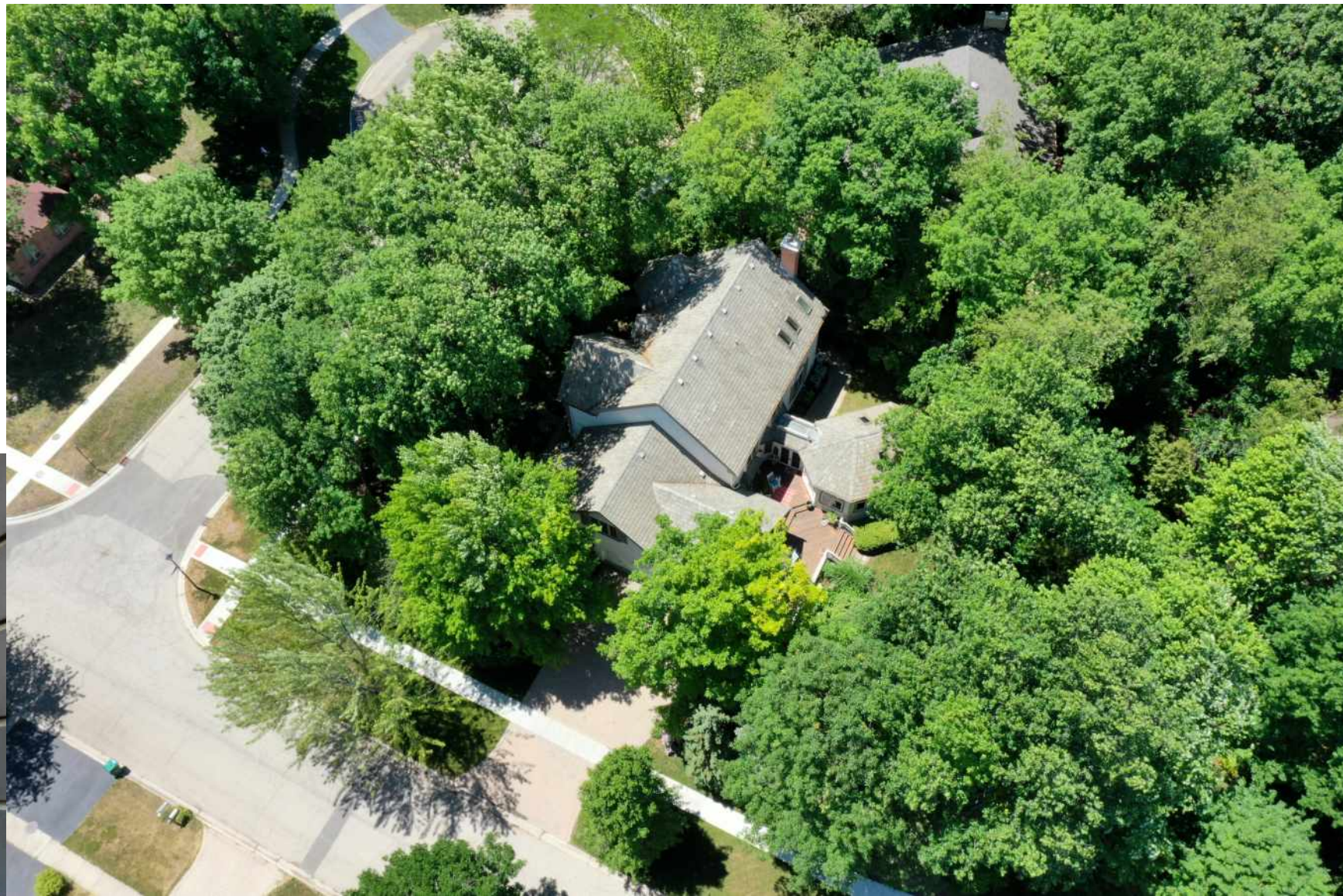
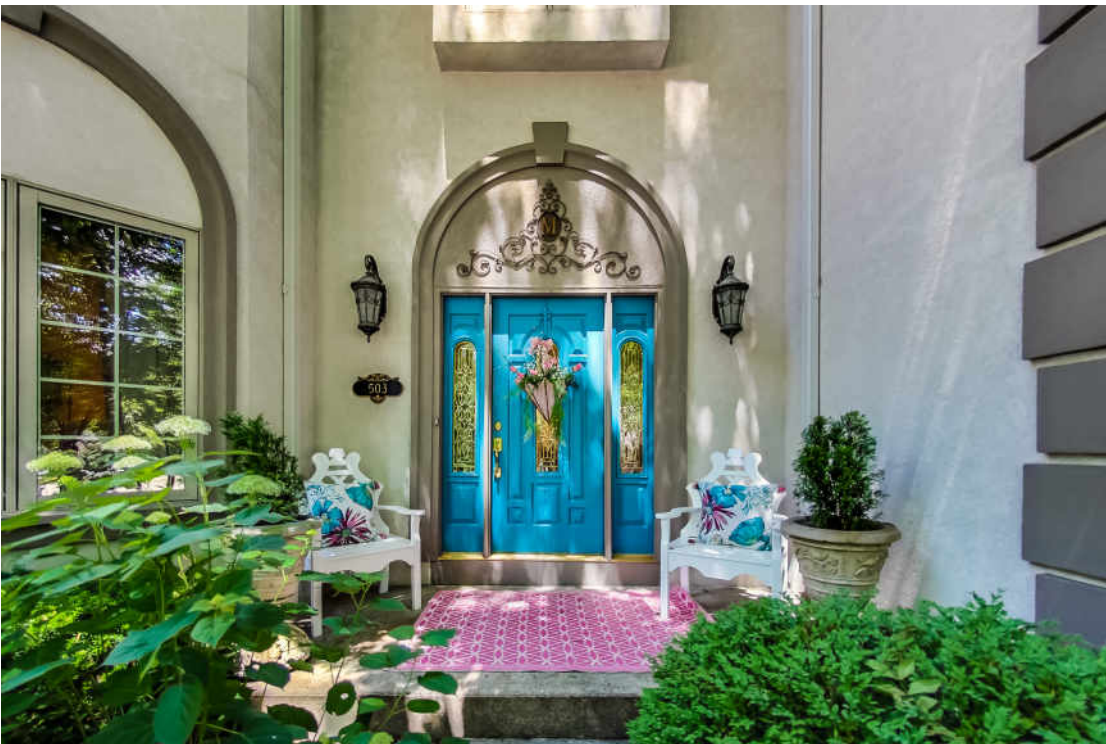
THERE ONCE WAS A FARMER NAMED GRAY WHO SETTLED ALONG A LAKE - THE LARGEST IN THE LAND. THE COMMUNITY AROUND GRAY'S LAKE GREW INTO A VILLAGE. THE VILLAGE BECAME **GRAYSLAKE.**

The lake remains at the center of the community and is a year-round attraction with fishing, swimming, and boating in the summer and ice fishing, hockey, and skating in the winter.

Grayslake retains its rural ambience with a historic downtown district and hometown celebrations such as a pet parade. There are also public golf courses, tennis courts, and recreational areas with swimming pools, skate parks, and ball fields. A 1,200-acre county forest preserve on the north side of town has a bird observation deck, trails, and wetlands.

The Grayslake Art Festival, Taste of Grayslake, and Grayslake Summer Days are popular attractions along with the Lake County Fair. Residents and visitors enjoy music, arts and crafts, carnival games, and local food vendors.

Grayslake has two train stations along Metra's Milwaukee District North and North Central Service lines in addition to Pace bus routes throughout the village.





JAMIE HERING

(847) 345-2668

JAMIEHERING@ATPROPERTIES.COM

WWW.REALTORJAMIE.COM



HERING HOMES

team

@properties[®]

503CHRISTYCIR.INFO