

5052 S DICKINSON COURT · ST. JOSEPH



5052 S DICKINSON COURT · ST. JOSEPH

@properties | CHRISTIE'S
INTERNATIONAL REAL ESTATE



MARK WORTMAN ASSOCIATE BROKER

269.876.2929 mobile
markwortman@atproperties.com
www.WortmanGroup.com



DOUG WORTMAN ASSOCIATE BROKER

269.930.2250 mobile
dougwortman@atproperties.com
www.WortmanGroup.com

WORTMAN
GROUP

5052 S DICKINSON COURT • ST. JOSEPH





5052 S DICKINSON COURT

FEATURES

Welcome Home!

Beautifully crafted custom home, tucked away on a double lot.

Elegant architectural details, gleaming hardwood floors and gracious floor plan makes this a distinctive home in todays market. Boasting 6 bedrooms, 4.5 baths, finished walkout offering over 4600 SF of living space.

The heart of the home is the spacious kitchen that flows into the family room... creating the perfect setting for gathering and entertaining. The well-appointed kitchen features beautiful cabinetry, granite countertops, a center island with sink, and a breakfast nook with doors that open to a large back deck overlooking a scenic wooded ravine. The dramatic two-story family room is filled with natural light from expansive windows and centered around a cozy gas fireplace. Upstairs, the home offers a spacious primary suite with two closets, a home office or optional sixth bedroom, and two additional bedrooms, one with its own ensuite bath. The walkout lower level includes a recreation room and provides easy access to the outdoor patio area.

Now add a three-car garage, double lot, an extra storage shed and ravine setting and you have a home for all seasons. Neighborhood offers a playground and open field, perfect for outdoor recreation.



MARK WORTMAN ASSOCIATE BROKER

269.876.2929 mobile
markwortman@atproperties.com
www.WortmanGroup.com



DOUG WORTMAN ASSOCIATE BROKER

269.930.2250 mobile
dougwortman@atproperties.com
www.WortmanGroup.com













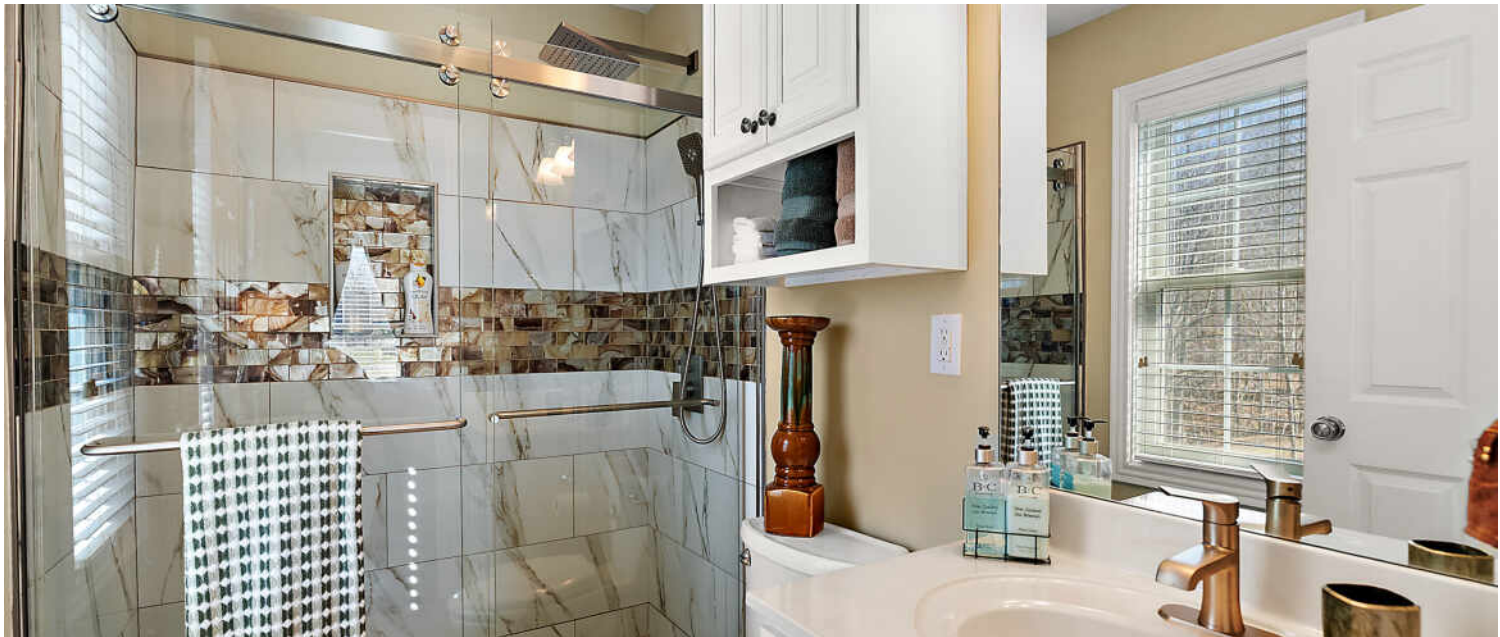




























TOTAL: 4705 sq. ft

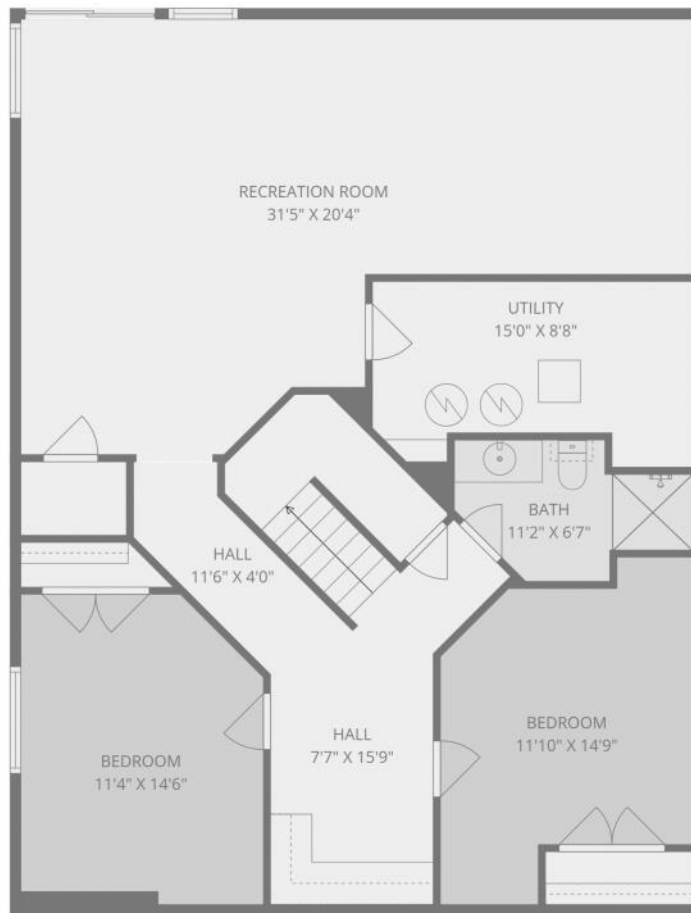
Basement: 1186 sq. ft, 1st floor: 1318 sq. ft, 2nd floor: 1545 sq. ft
 EXCLUDED AREAS: UTILITY: 118 sq. ft, FIREPLACE: 12 sq. ft, LOW CEILING: 52 sq. ft,
 OPEN TO BELOW: 390 sq. ft, WALLS: 276 sq. ft



TOTAL: 4705 sq. ft

Basement: 1186 sq. ft, 1st floor: 1318 sq. ft, 2nd floor: 1545 sq. ft

EXCLUDED AREAS: UTILITY: 118 sq. ft, FIREPLACE: 12 sq. ft, LOW CEILING: 52 sq. ft,
OPEN TO BELOW: 390 sq. ft, WALLS: 276 sq. ft



TOTAL: 4705 sq. ft

Basement: 1186 sq. ft, 1st floor: 1318 sq. ft, 2nd floor: 1545 sq. ft
 EXCLUDED AREAS: UTILITY: 118 sq. ft, FIREPLACE: 12 sq. ft, LOW CEILING: 52 sq. ft,
 OPEN TO BELOW: 390 sq. ft, WALLS: 276 sq. ft

@properties® | CHRISTIE'S
INTERNATIONAL REAL ESTATE

Leading REAL ESTATE
COMPANIES
OF THE WORLD®

