

505 E BURDICK ROAD
CHESTERTON





ROOM DIMENSIONS

LIVING ROOM : 18.2' × 15.11'

DINING ROOM : 18.2' × 9.6'

KITCHEN : 19.2' × 12.5'

PRIMARY BEDROOM : 15.2' × 13.5'

SECOND BEDROOM : 11.2' × 10.9'

THIRD BEDROOM : 12.5' × 11.4'

FOURTH BEDROOM : 14.1' × 10.4'

SUNROOM : 23.7' × 11.7'

GREAT ROOM : 29.8' × 19.8'

SECOND KITCHEN : 15' × 8.9'

LAUNDRY ROOM : 12.11' × 10.5'

4 BEDROOM

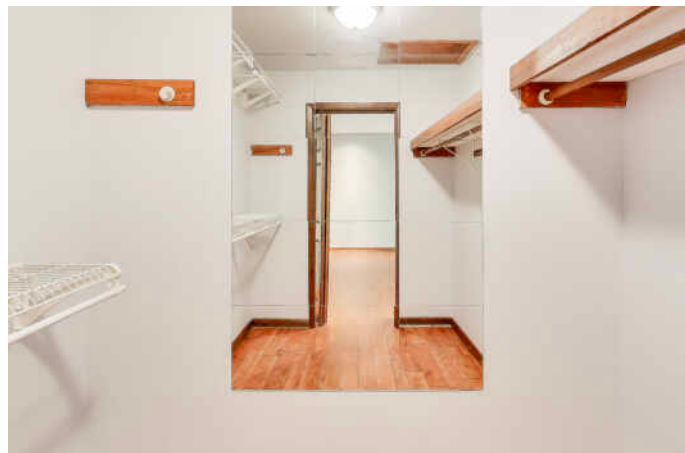
3 BATH

TAXES: \$2,098

SCENIC POND VIEWS AND A SMART, FLEXIBLE FLOOR PLAN!

Charming Ranch on 2.1 Acres with Pond Views and Multi-Generational Living! Welcome to this beautiful ranch-style home nestled on 2.1 scenic acres offering privacy, space, and peaceful country living. The seller just had the home professionally deep cleaned, so it's completely move in ready! Enjoy your mornings sipping coffee in the enclosed porch just off the living room--or step right from your primary bedroom to take in views of the pond, trees, and visiting wildlife. There's plenty of room to play in the yard, host gatherings, and enjoy evenings around a bonfire under the stars. The finished basement is perfect for related or multi-generational living, featuring an additional (4th) possible bedroom, full bathroom, and a second kitchen with a dining and living area that walks out to the backyard. Recent updates include a 4-year-old roof, Leaf Gutter Guards, and a Nova waterproofing system for peace of mind. The furnace and central air were replaced about 10 years ago. The attached drive-through garage adds convenience, allowing you to pull straight through and exit out the back. Inside, you'll find Pella windows with built in blinds, a remodeled main kitchen (2011), and a lower-level kitchen remodel (2009)--all showing pride of ownership. Enjoy low taxes, great schools, no HOA, and the serenity of country living while still being within easy reach of local amenities. This property truly offers the best of both worlds--comfort, nature, and room to make lifelong memories!







ORIGINALLY NAMED COFFEE CREEK AFTER A NEARBY STREAM, **CHESTERTON** COMBINES THE OPPORTUNITIES OF A BIG CITY WITH THE COMFORTS AND PERSONALITY OF A SMALL TOWN.

The town is ideally located just minutes from beautiful beaches along the shores of Lake Michigan as well as the South Shore Line, which provides an easy commute to downtown Chicago.

Chesterton is characterized by its distinctive homes that make up a community of neighborhoods. The area offers a variety of housing options such as single-family homes and luxury apartments, as well as a historic downtown district that is full of homegrown businesses and one-of-a-kind events and experiences.

Chesterton's European Market comes every May through October, and features everything from local art and unique books to breads, cheeses, and pastries. Coinciding with the Market, the Taste of Duneland is a popular annual event complete with food tastings, bounce houses, live entertainment, and a beer and wine garden.

When it comes to outdoor recreation, Chesterton features trails throughout town. The Coffee Creek Watershed Preserve has 157 acres of wetlands, woodlands, prairies, and trails, as well as plants and animals that can be explored through winding boardwalks. Residents can also experience the outdoors at one of Chesterton's area parks, including Dogwood Park, which has a playground, volleyball court, softball diamonds, multipurpose fields, horseshoe pits, and basketball courts. Chesterton is also just a few minutes from the Indiana Dunes State and National Parks.



NOTES



HEATHER ALEXANDER

(219) 393-0645

219.531.2288

HEATHERALEXANDER@ATPROPERTIES.COM

HEATHERALEXANDERREALTOR.COM



CHRISTIE'S
INTERNATIONAL REAL ESTATE