

505 S ELM STREET
PALATINE





ROOM DIMENSIONS

FAMILY ROOM : 21' × 17'

DINING ROOM : 24' × 13'

KITCHEN : 25' × 11'

PRIMARY BEDROOM : 19' × 18'

WALK IN CLOSET : 6' × 4'

SECOND BEDROOM : 14' × 13'

THIRD BEDROOM : 13' × 11'

FOURTH BEDROOM : 12' × 10'

RECREATION ROOM : 21' × 13'

OFFICE : 12' × 10'

LAUNDRY ROOM : 13' × 5'

4 BEDROOM

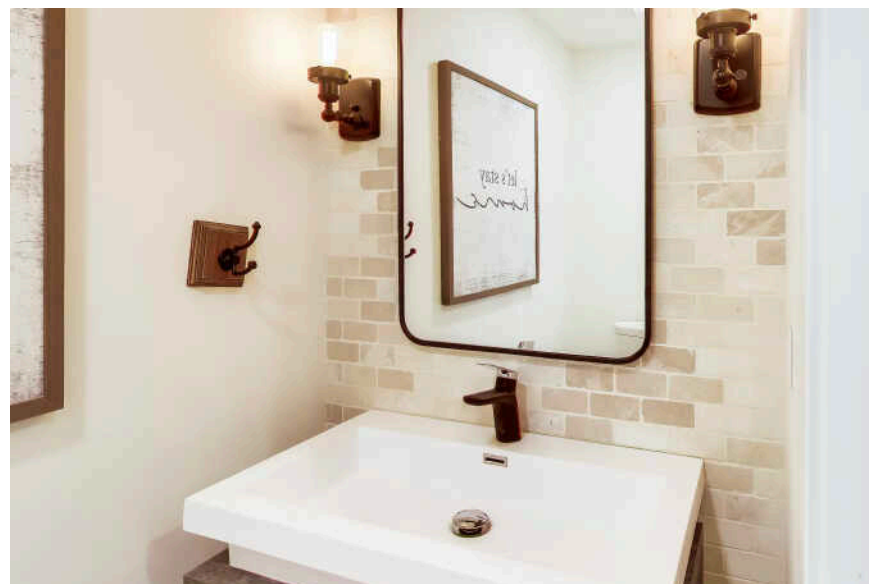
3.1 BATH

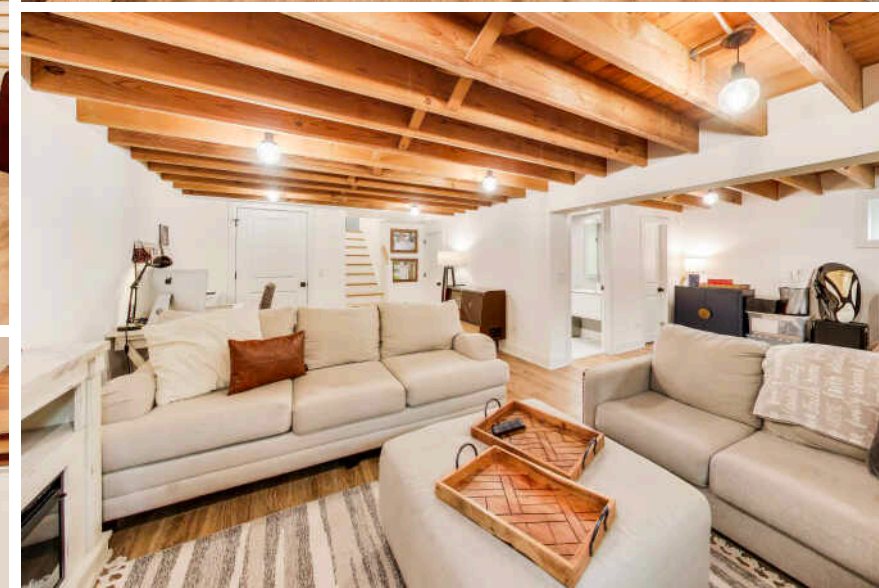
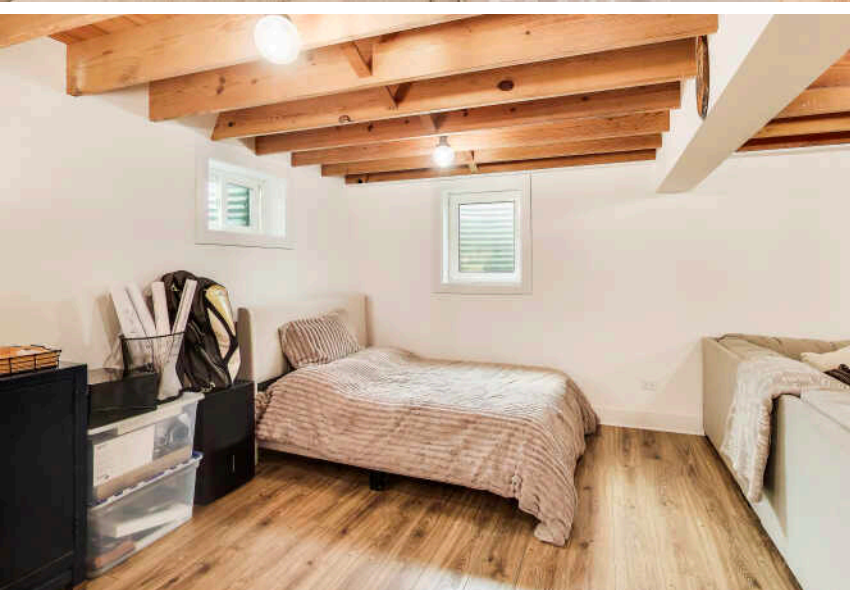
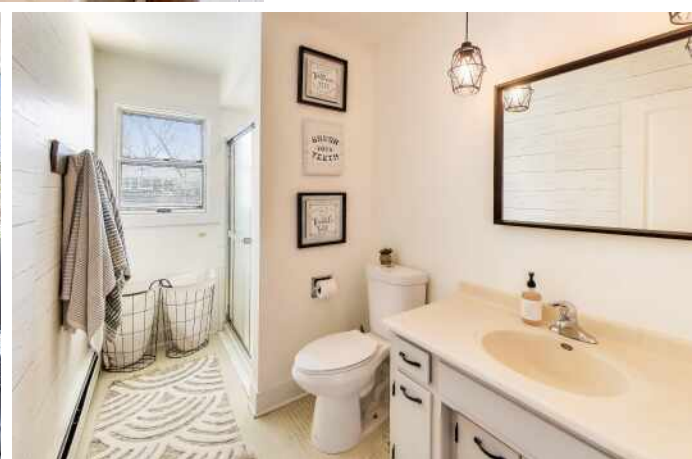
TAXES: \$12,064

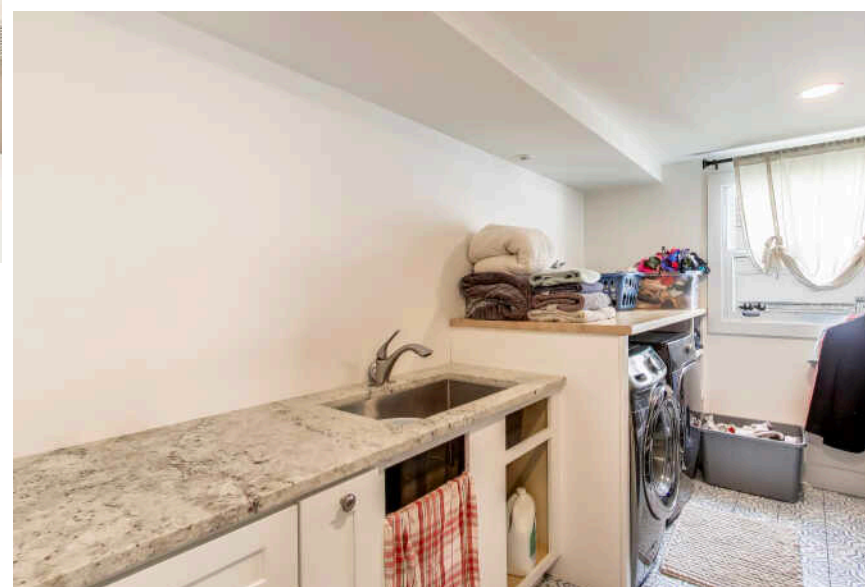
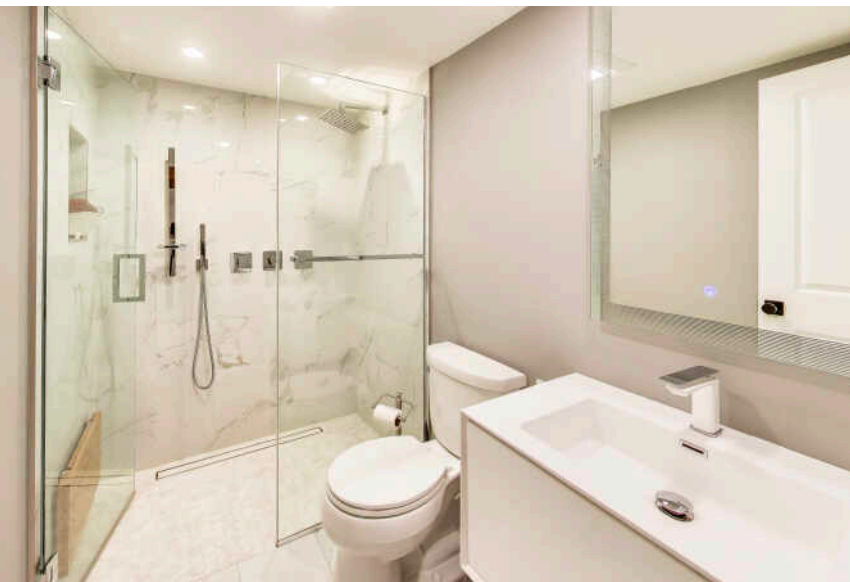
PROPERTY INFORMATION & DETAILS

This beautifully finished residence offers the open-concept design and modern style you've been searching for. Step inside and be immediately impressed by the gorgeous kitchen (2020) featuring white shaker-style cabinets, a large island ideal for gatherings, and a separate wine bar area - truly the heart of the home. Gleaming hardwood floors flow throughout, complemented by built-in cubbies that add both charm and practical storage. The spacious family room serves as a welcoming gathering space with a gorgeous fireplace (2020), perfect for cozy nights in. Sliding doors lead out to your private fenced backyard, showcasing a roomy patio with a pergola surrounded by lush greenery - an ideal setting for outdoor entertaining or peaceful relaxation. Don't miss the expanded mudroom/drop zone (2020) off the garage, providing added convenience and organization. Retreat to the primary suite, thoughtfully located on its own level for privacy, complete with a walk-in closet and primary bath. Three additional bedrooms, each featuring hardwood floors, plus another full bath complete the second level. The finished lower level (2020) offers extra living and entertainment space, including a full heated floored bathroom (2020) with a walk-in shower and a sophisticated showcase ceiling - perfect for hosting guests or enjoying a movie nights. Additional updates include: windows ('20), ac ('20), furnace ('20), fenced yard, concrete driveway ('25). Enjoy the convenience of walking to nearby schools, parks, pools, and recreation centers. Plus, you're just minutes from downtown Palatine with Metra access, restaurants, shopping, nightlife, and more!











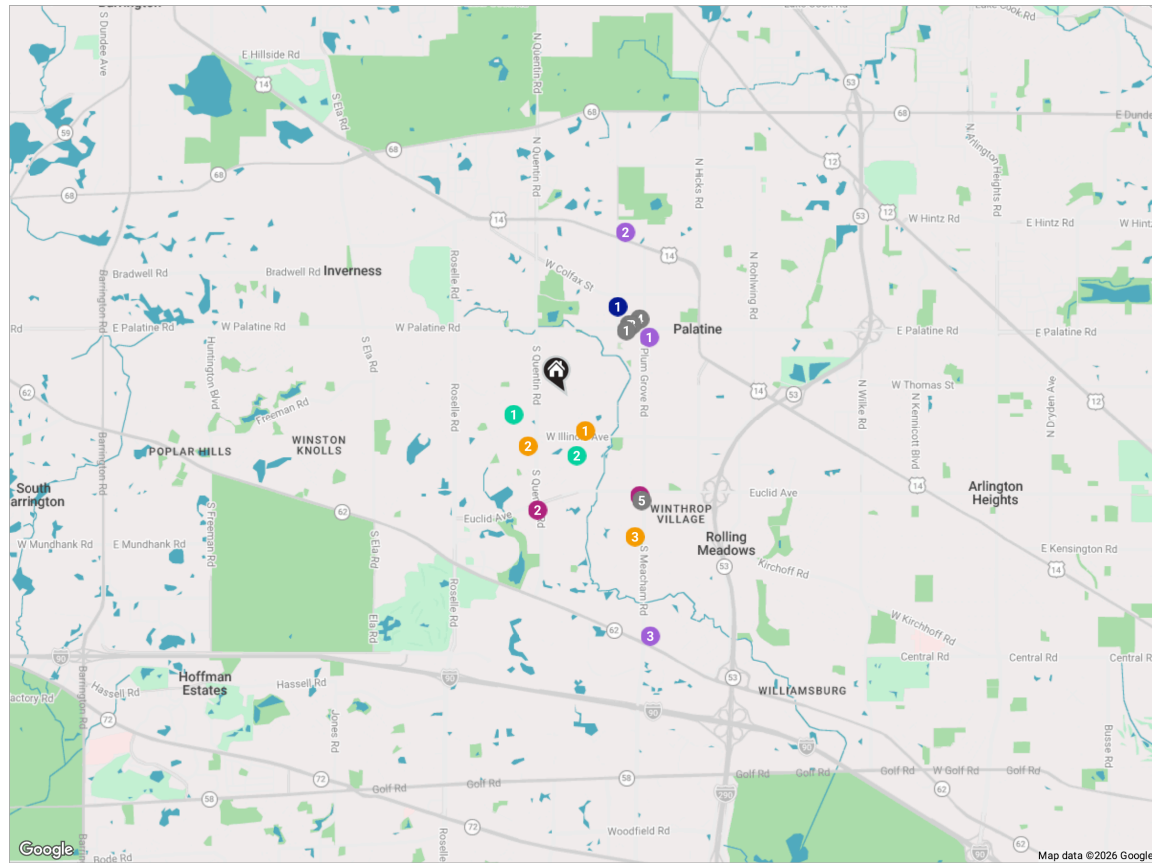
THE VILLAGE OF **PALATINE** HAS MASTERED THE ART OF BALANCE.

The growing community has a healthy mix of residents who enjoy its friendly suburban lifestyle and businesses that fuel the local economy.

The village embraces growth to support a wealth of amenities and services. The Palatine Park District has 28 parks, an 18-hole golf course, and a variety of classes from fitness and sports to arts and crafts. Palatine offers scenic views with winding trails, beautiful residential areas, and nearby Deer Grove Forest Preserve.

Palatine's downtown business district is both charming and self-sufficient for residents. Restaurants include a mix of local favorites from classic eateries to upscale breweries, as well as a variety of local bars. The village hosts several street festivals and a popular farmers market.

Commuters have access to the Chicago Loop with the Palatine Metra station and I-90. The nearby Chicago Executive Airport offers private and corporate aircraft services.



RESTAURANTS

- 1 Heng Wing Restaurant
121 WEST PALATINE ROAD, 0.8 MI
- 2 Pizza Bella
16 NORTH BROCKWAY STREET, 0.9 MI
- 3 Mexico Uno
15 NORTH BROCKWAY STREET, 0.9 MI
- 4 Gianni's Cafe
18 WEST STATION STREET, 1.0 MI
- 5 Anna's Red Apple
2121 SOUTH PLUM GROVE ROAD,
1.2 MI

SHOPPING

- 1 CVS
2045 SOUTH PLUM GROVE ROAD,
1.1 MI
- 2 Walgreens
805 WEST EUCLID AVENUE, 1.1 MI
- GROCERY**
- 1 Jewel-Osco
45 SOUTH PLUM GROVE ROAD, 0.9 MI
- 2 Eurofresh Market
130 WEST NORTHWEST HIGHWAY,
1.6 MI

SCHOOLS

- 3 ALDI
1412 EAST ALGONQUIN ROAD, 2.3 MI
- 1 Pleasant Hill School
434 WEST ILLINOIS AVENUE, 0.4 MI
- 2 William Fremd High School
1000 SOUTH QUENTIN ROAD ROOM
200, 0.6 MI
- 3 Plum Grove Middle School
2600 S PLUM GROVE RD, 1.4 MI

TRANSIT

- 1 Palatine
METRA - UNION PACIFIC NORTHWEST,
1.0 MI

PARKS

- 1 Sparrow Park
653 SOUTH MIDDLETON AVENUE,
0.5 MI
- 2 Birchwood Pool
435 WEST ILLINOIS AVENUE, 0.6 MI

NOTES



AMY DIAMOND

847.497.0230

AMY@DEALWITHDIAMOND.COM

DEALWITHDIAMOND.COM

