

50 S GREELEY STREET #204
PALATINE





ROOM DIMENSIONS

LIVING ROOM : 13' × 16'

DINING ROOM : 18' × 9'

KITCHEN : 10' × 11'

FOYER : 5' × 5'

PRIMARY BEDROOM : 12' × 14'

BEDROOM 2 : 10' × 12'

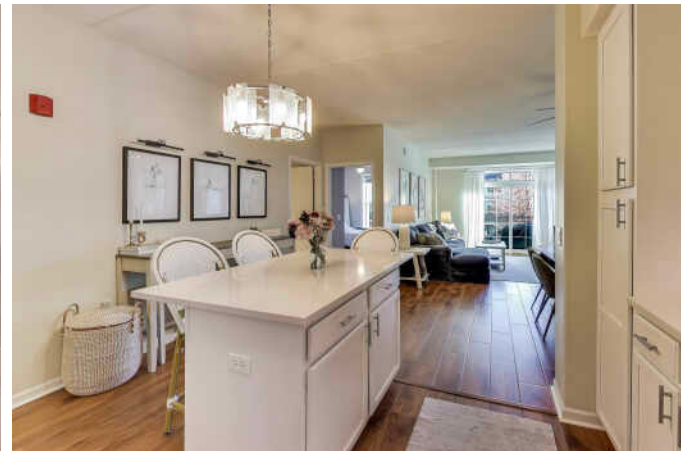
BALCONY : 13' × 6'

Modern Downtown Living in the Heart of Palatine! Experience the best of city-style living with this beautifully updated condo in an unbeatable downtown Palatine location! Bright natural light fills the open floor plan, creating the perfect vibe for work, play, and entertaining.

The modern kitchen features fresh white cabinetry, sleek brushed-nickel hardware, brand-new Quartz countertops, tile backsplash, a deep tub sink, and a spacious island with breakfast bar-ideal for coffee mornings or hosting friends. Stainless steel appliances and plenty of pantry storage make this a true chef's kitchen. The open-concept dining and living area easily transforms from cozy nights in to lively get-togethers. Step through the sliding glass doors to your private balcony-perfect for grilling (propane and electric allowed), relaxing, or enjoying the morning sun.

Your primary suite offers a private retreat with a full bath featuring a glass-enclosed shower, built-in bench, and generous vanity. The second bedroom is great for guests, a home office, or a workout space, with easy access to a full hallway bath. Enjoy in-unit laundry, a huge foyer closet, and fresh paint throughout including doors and trim. Parking is easy with 1 underground heated space plus a secured large walk in storage closet and additional guest parking outside.

You'll love being just steps from downtown Palatine's restaurants, coffee shops, boutiques, and nightlife, as well as year-round community events. Commuters will appreciate the short walk to the Metra station, and the home feeds into top-rated Fremd High School. Move-in ready, stylish, and walkable-this is downtown Palatine living at its best.

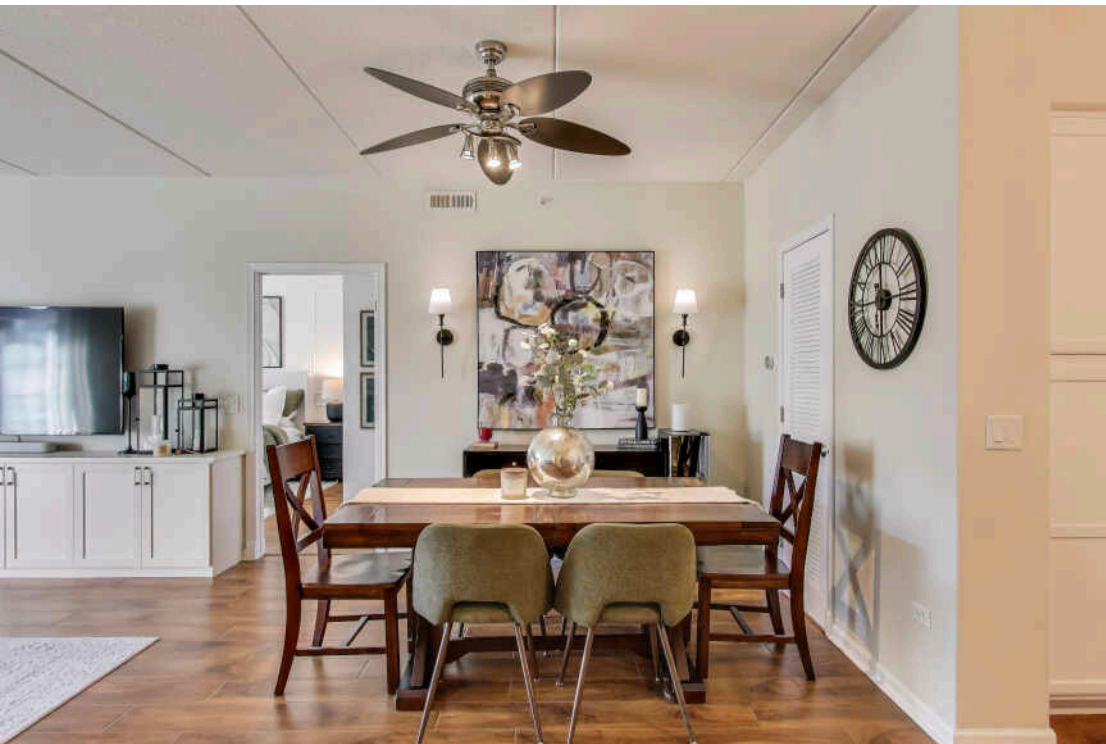
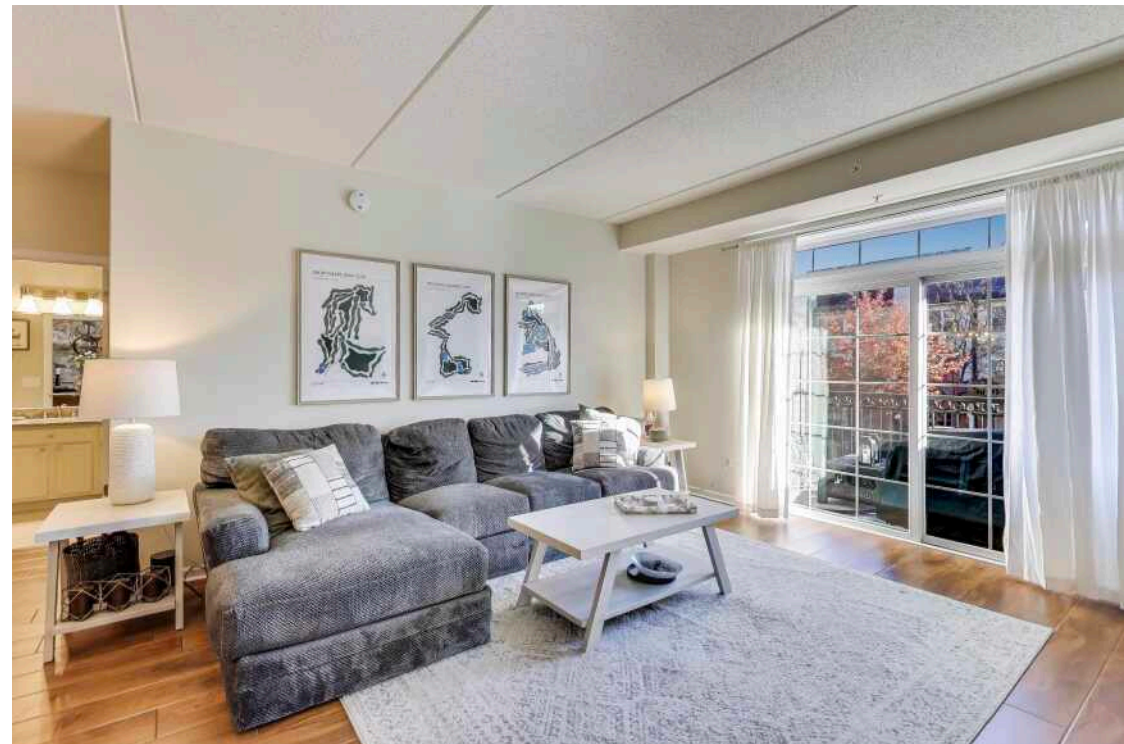


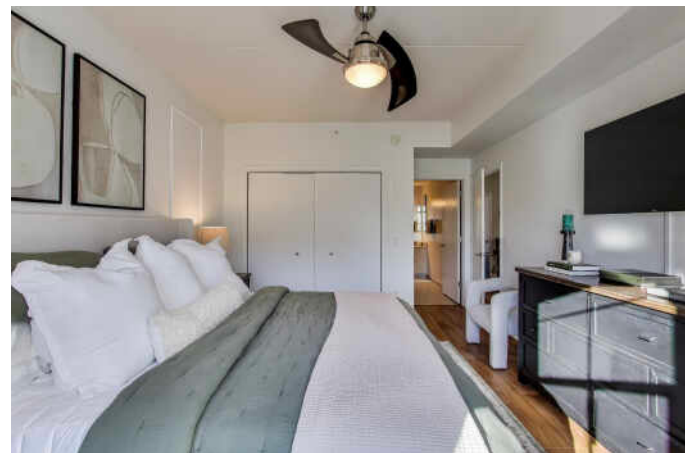
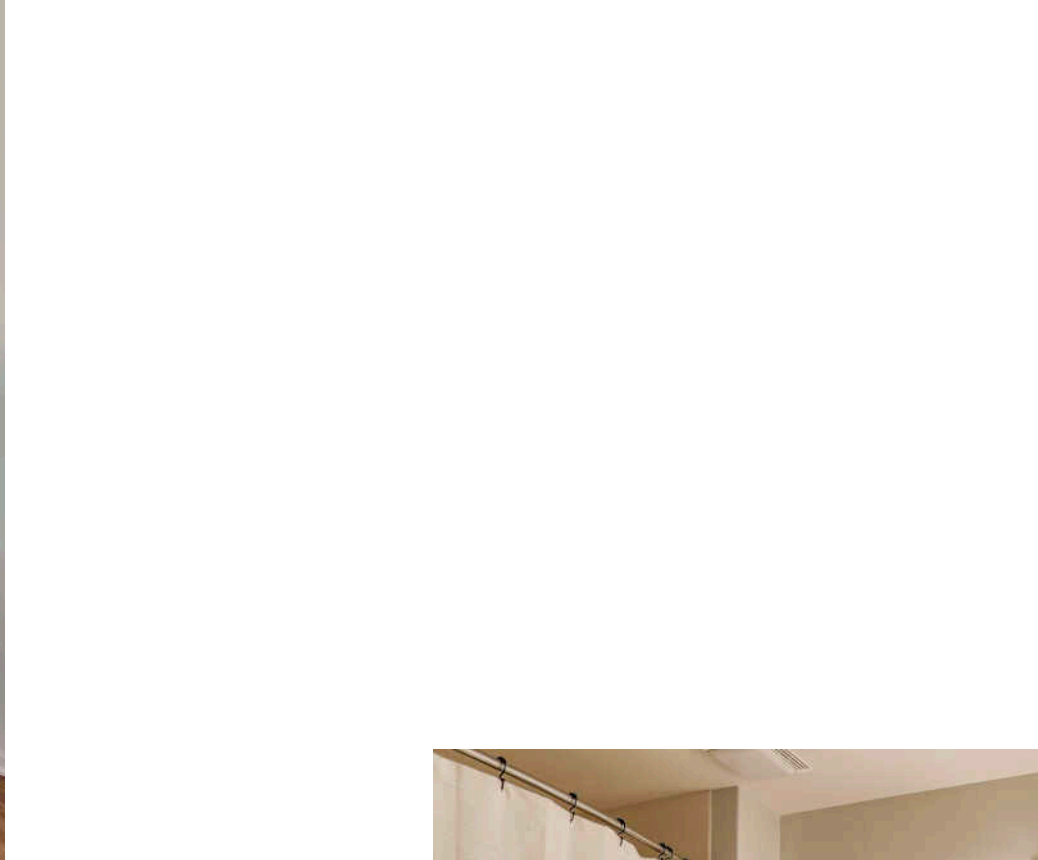
2 BEDROOM

2 BATH

TAXES: \$7454.00 (2023 TAXES)

ASSESSMENTS: \$475/MONTHLY







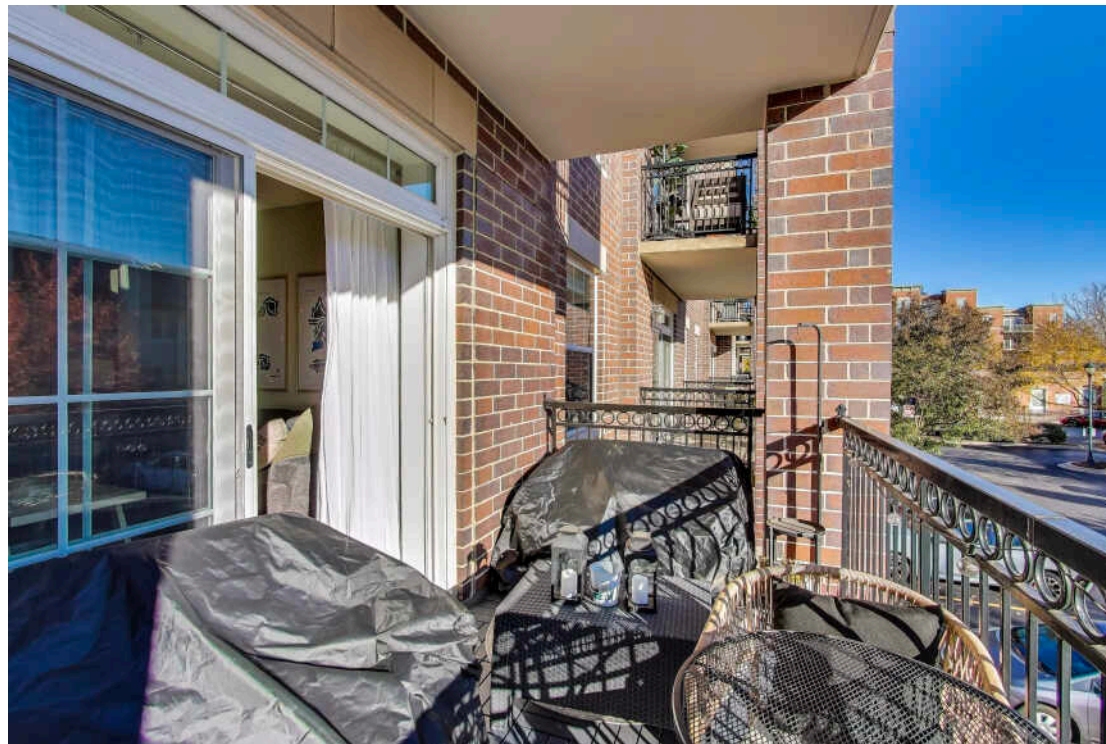
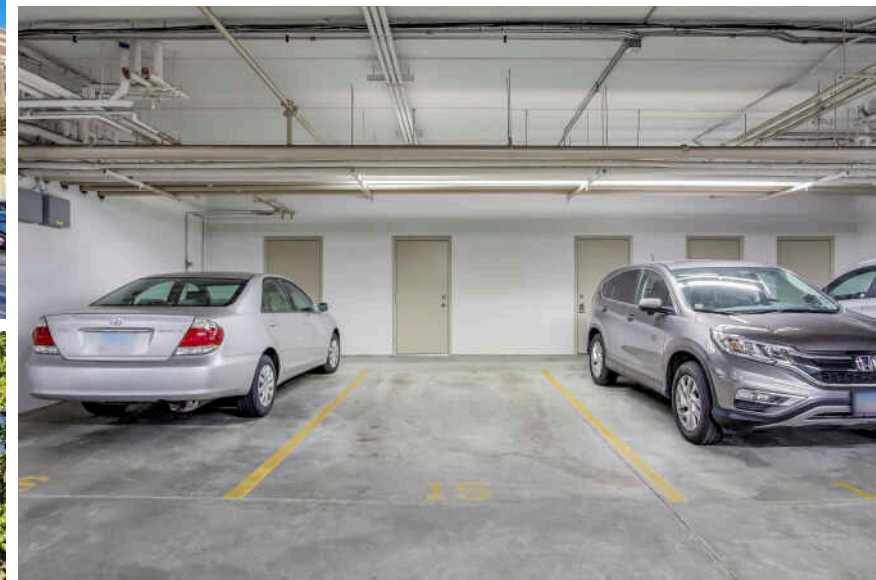
THE VILLAGE OF **PALATINE** HAS
MASTERED THE ART OF BALANCE.

The growing community has a healthy mix of residents who enjoy its friendly suburban lifestyle and businesses that fuel the local economy.

The village embraces growth to support a wealth of amenities and services. The Palatine Park District has 28 parks, an 18-hole golf course, and a variety of classes from fitness and sports to arts and crafts. Palatine offers scenic views with winding trails, beautiful residential areas, and nearby Deer Grove Forest Preserve.

Palatine’s downtown business district is both charming and self-sufficient for residents. Restaurants include a mix of local favorites from classic eateries to upscale breweries, as well as a variety of local bars. The village hosts several street festivals and a popular farmers market.

Commuters have access to the Chicago Loop with the Palatine Metra station and I-90. The nearby Chicago Executive Airport offers private and corporate aircraft services.





KRISTIN DEJOHN

847.372.2557

KRISTINDEJOHN@ATPROPERTIES.COM

CSTARTEAM.COM/AGENT/KRISTIN-DEJOHN



CAROLINE STARR

847.890.8892

WWW.CSTARTEAM.COM

CAROLINE@CSTARTEAM.COM



CHRISTIE'S
INTERNATIONAL REAL ESTATE