

50 S GREELEY STREET #210  
PALATINE





#### ROOM DIMENSIONS

LIVING ROOM : 14' x 13'

DINING ROOM : 14' x 9'

KITCHEN : 15' x 10'

PRIMARY BEDROOM : 15' x 12'

SECOND BEDROOM : 12' x 12'

OFFICE : 12' x 10'

LAUNDRY : 6' x 4'

Welcome to this beautifully maintained condo in the heart of downtown Palatine, offering the perfect blend of comfort and convenience. Step inside to discover stunning black cherry wood floors throughout the main living areas, creating a warm and inviting atmosphere. A versatile separate den/office greets you, providing the ideal space for a home office, gym, additional living area, or whatever suits your lifestyle needs. The open-concept design highlights an expansive kitchen featuring saddle maple cabinets, abundant granite counter space, and a peninsula with extra seating-truly a dream kitchen for cooking and entertaining. This flows seamlessly into the dining area for formal meals and extends into a spacious family room, perfect for relaxing evenings at home. Enjoy your private balcony, ideal for grilling or unwinding with a glass of wine after a long day. The primary suite boasts a walk-in closet and a private bathroom complete with a walk-in shower. A second bedroom, full bathroom, and convenient in-unit laundry add to the functionality of this incredible condo. Additional perks include a heated garage parking spot and storage for your extra convenience. Recent updates such as a new washer/dryer (2024) and dishwasher (2024). Experience unparalleled walkability to all that downtown Palatine offers, including easy Metra access, restaurants, nightlife, shopping, and more.

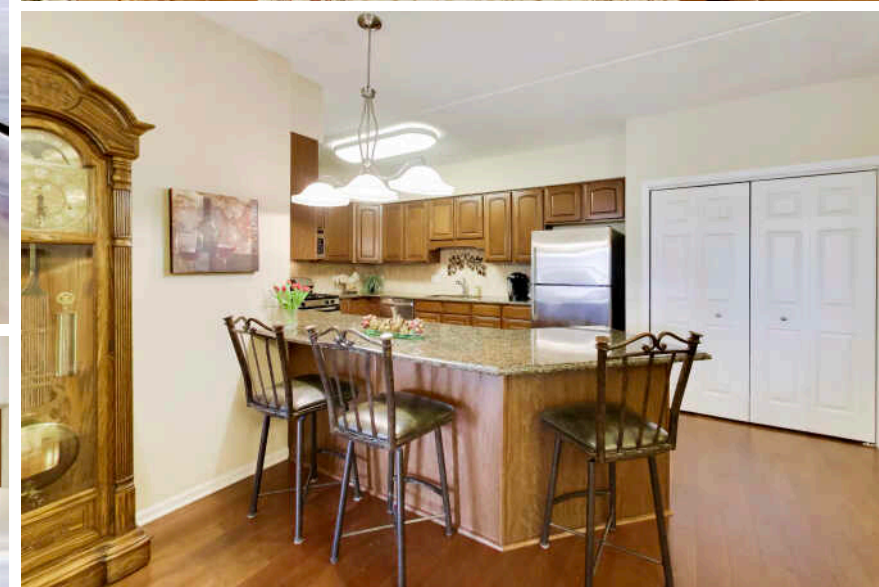
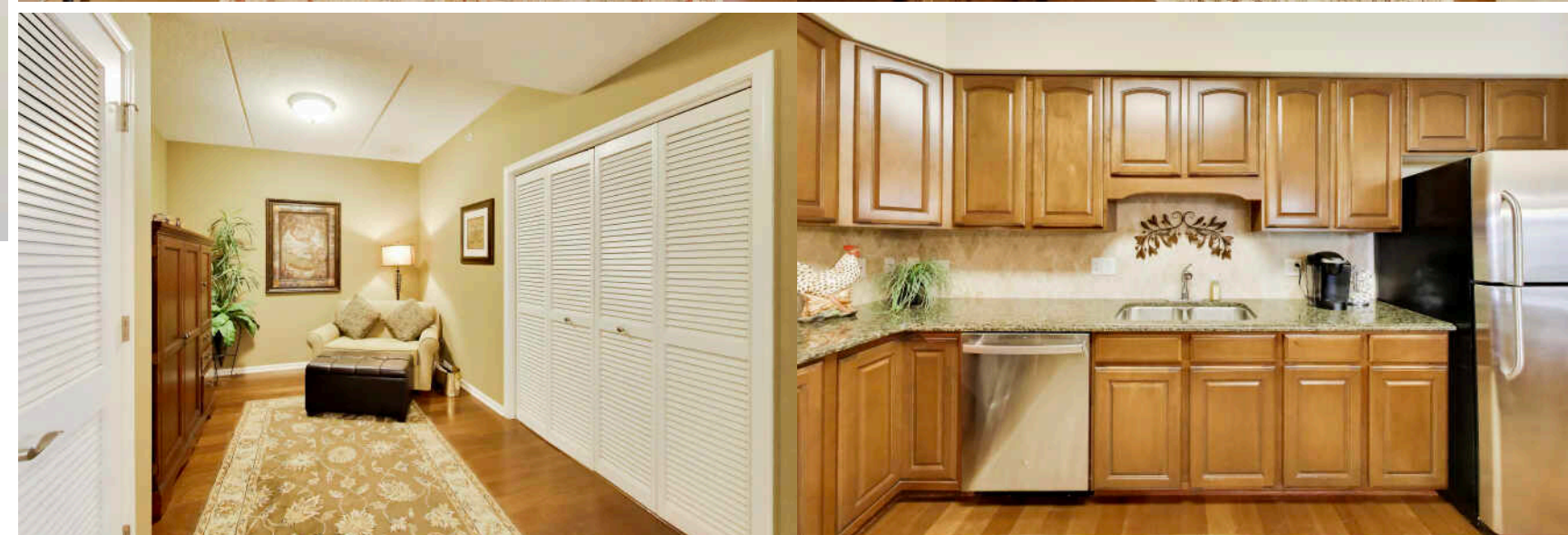


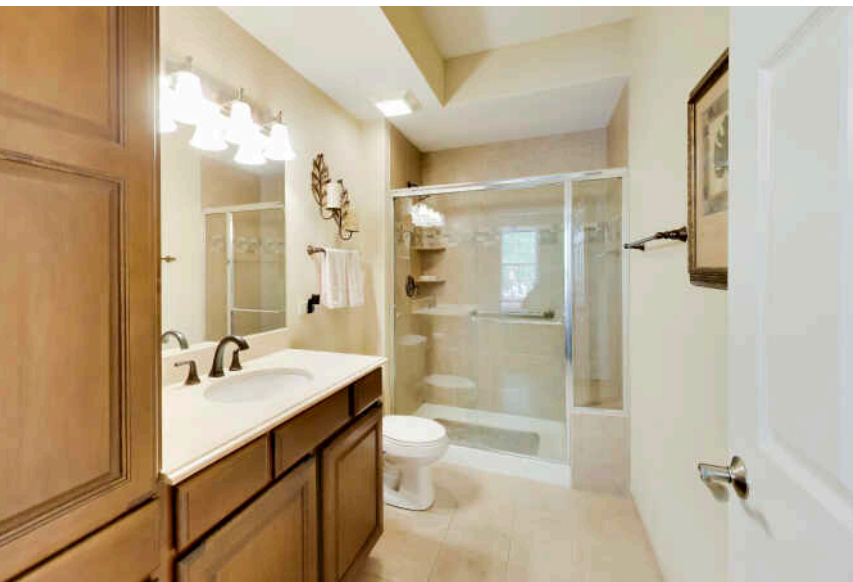
2 BEDROOM

2 BATH

TAXES: \$3,710

ASSESSMENTS: \$568 / MONTH







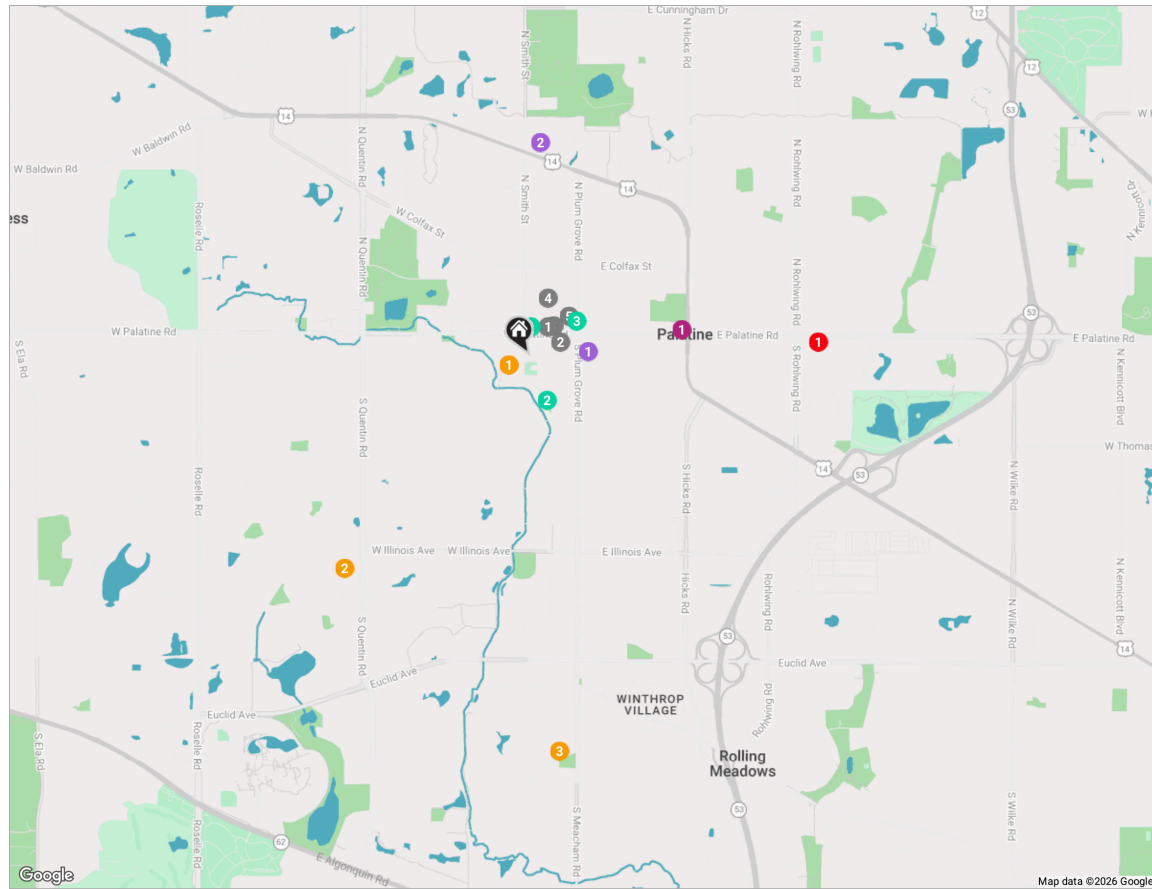
## THE VILLAGE OF **PALATINE** HAS MASTERED THE ART OF BALANCE.

The growing community has a healthy mix of residents who enjoy its friendly suburban lifestyle and businesses that fuel the local economy.

The village embraces growth to support a wealth of amenities and services. The Palatine Park District has 28 parks, an 18-hole golf course, and a variety of classes from fitness and sports to arts and crafts. Palatine offers scenic views with winding trails, beautiful residential areas, and nearby Deer Grove Forest Preserve.

Palatine's downtown business district is both charming and self-sufficient for residents. Restaurants include a mix of local favorites from classic eateries to upscale breweries, as well as a variety of local bars. The village hosts several street festivals and a popular farmers market.

Commuters have access to the Chicago Loop with the Palatine Metra station and I-90. The nearby Chicago Executive Airport offers private and corporate aircraft services.



**RESTAURANTS**

- 1 Pizza Bella  
16 NORTH BROCKWAY STREET, 0.2 MI
- 2 Bendita Cocina Argentinean Restaurant  
16 SOUTH BOTHWELL STREET, 0.2 MI
- 3 Mexico Uno  
15 NORTH BROCKWAY STREET, 0.2 MI
- 4 Emmett's Brewing Company  
110 NORTH BROCKWAY STREET, 0.3 MI

- 5 Gianni's Cafe  
18 WEST STATION STREET, 0.3 MI

**SHOPPING**

- 1 Walgreens  
12 NORTH NORTHWEST HIGHWAY, 0.7 MI

**GROCERY**

- 1 Jewel-Osco  
45 SOUTH PLUM GROVE ROAD, 0.3 MI

- 2 Eurofresh Market  
130 WEST NORTHWEST HIGHWAY, 1.0 MI

**MEDICAL**

- 1 NCH Medical Group  
855 EAST PALATINE ROAD, 1.3 MI

**SCHOOLS**

- 1 Stuart R. Paddock School  
225 WEST WASHINGTON STREET, 0.1 MI

- 2 William Fremd High School  
1000 S QUENTIN RD ROOM 200, 1.3 MI

- 3 Plum Grove Middle School  
2600 S PLUM GROVE RD, 1.8 MI

**PARKS**

- 1 Towne Square  
150 WEST PALATINE ROAD, 0.1 MI
- 2 Hawthorne Park  
205 SOUTH BROCKWAY STREET, 0.2 MI
- 3 Robert C. Greenlees Plaza  
PALATINE, 0.3 MI

NOTES

---



---



---



---



---



---



---



---



---



---



## AMY DIAMOND

847.497.0230

AMY@DEALWITHDIAMOND.COM

DEALWITHDIAMOND.COM

