

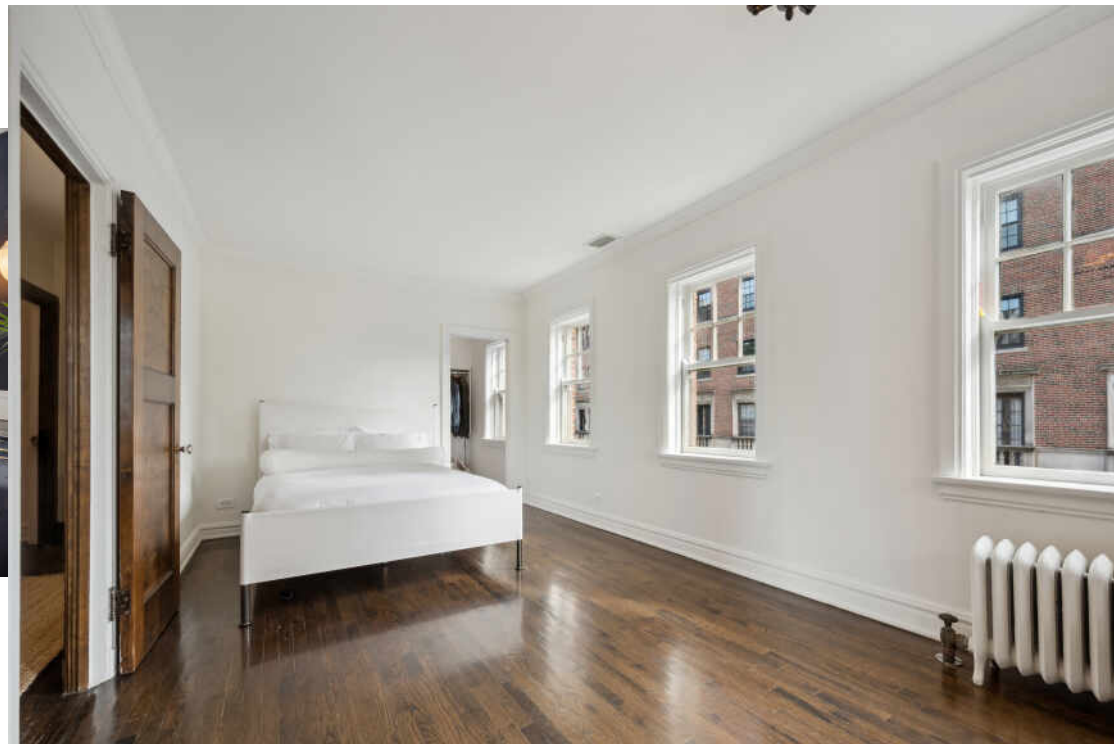
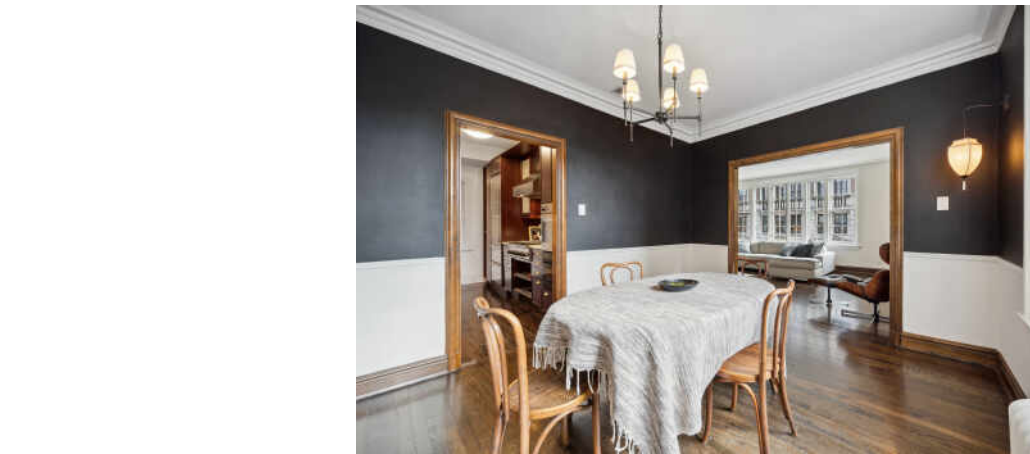
50 W SCHILLER STREET #21
GOLD COAST

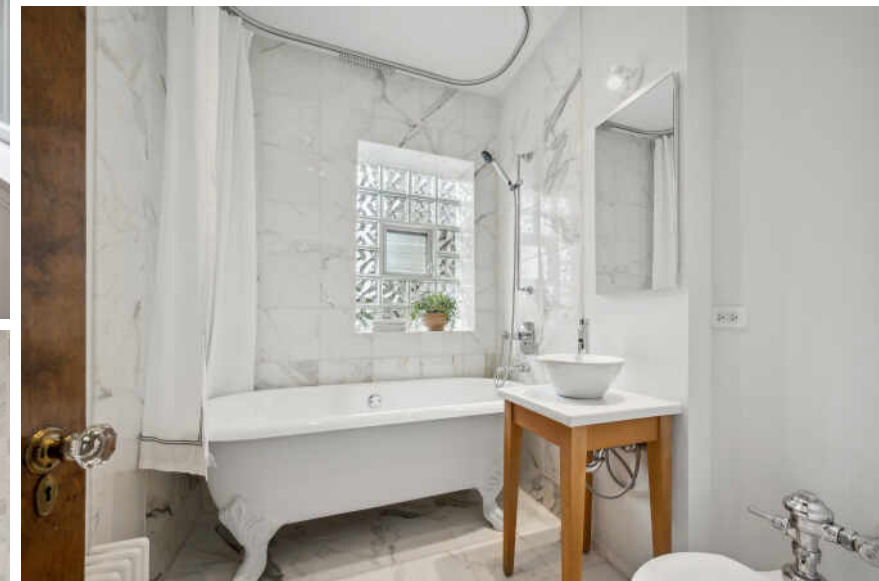


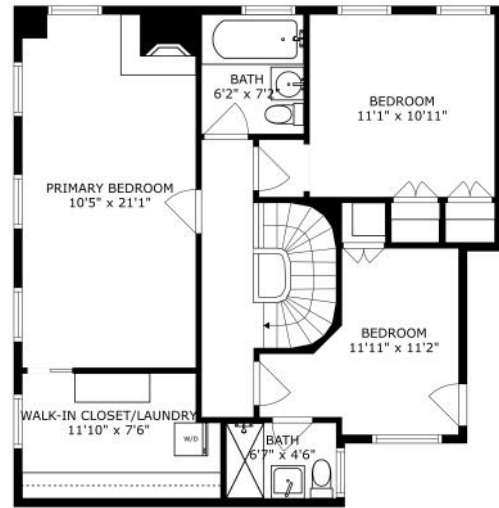


Elegant, corner duplex located in the heart of the Gold Coast in the famed Andrew Rebori building is vintage European charm at its best. South west facing, this unit is flooded with light and offers privacy as well access to the most coveted courtyard in the city. Main level features living room with wood burning fireplace, 9' ceilings and a wall of windows. Dining room, with evening sunset views and a DiGiulio galley kitchen. Graceful staircase takes you to the second level. Primary bedroom with corner fireplace and walk-in closet, including newly installed Bosch washer/dryer. Two additional bedrooms, one perfect for a nursery or home office, and two full marble baths complete this floor. Walking distance to the lake, great neighborhood restaurants, high-end shopping, and top rated schools, including Latin School of Chicago, this is Gold Coast living at its best. With a huge cast iron, clawfoot tub and two wood burning fireplaces, this unit will even make you look forward to Chicago winters!

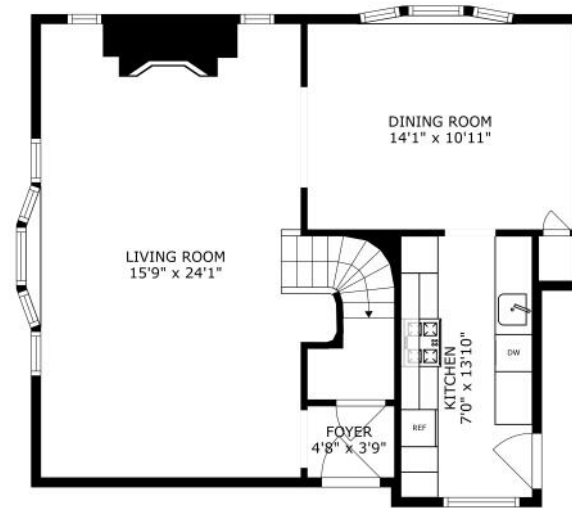






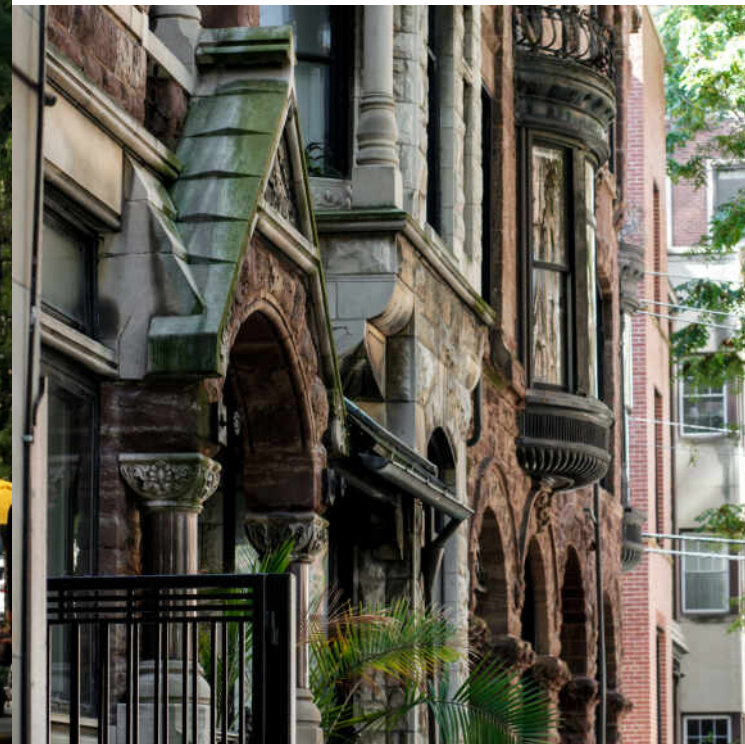


SIZES AND DIMENSIONS ARE APPROXIMATE, ACTUAL MAY VARY.



SIZES AND DIMENSIONS ARE APPROXIMATE, ACTUAL MAY VARY.





WHEN YOU REACH THE **GOLD COAST**, YOU KNOW YOU HAVE ARRIVED.

In Chicago's ultimate luxury neighborhood, you'll find lively beaches, internationally renowned boutiques, incredible cuisine, and vibrant nightlife, as well as beautiful parks and attractions.

Residents live among the best experiences the city has to offer. A day in the Gold Coast might include a venture down Michigan Avenue, a day at the beach, and shopping along Oak Street, followed by dinner at an award-winning restaurant.

From the stately mansions on Astor Street to the magnificent high-rises overlooking the lake, the Gold Coast also features a surprising variety of housing choices. In addition to the historic apartment buildings that line Lake Shore Drive, there are walk-ups, townhomes, and a number of contemporary high-rises with all the modern amenities.

For those heading to work downtown, their “commute” is about as convenient as it gets when it comes to city living.



NOTES



KATHLEEN MANN

312.533.0208

KATHLEENMANN@ATPROPERTIES.COM



CHRISTIE'S
INTERNATIONAL REAL ESTATE

All specifications, features, designs, price, assessments, taxes and materials are subject to change without notice. Depicted floor plans and architectural renderings are only an artist's impression.

