

**5111 W ARGYLE STREET**  
JEFFERSON PARK





4 BEDROOM  
1 BATH  
TAXES: \$6,544.41

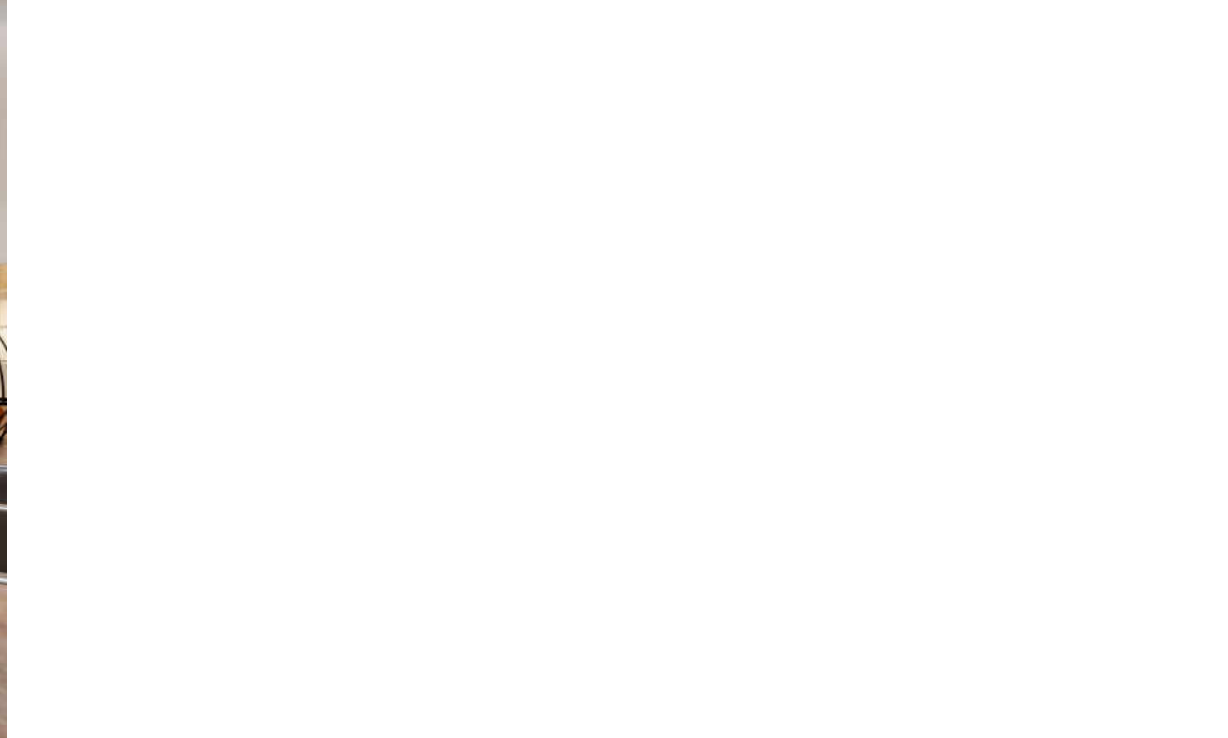
FALL IN LOVE WITH THIS WARM AND CHARMING JEFFERSON PARK 4-BEDROOM, 1-BATH HOME THAT PERFECTLY BLENDS MODERN UPDATES WITH INVITING COMFORT.

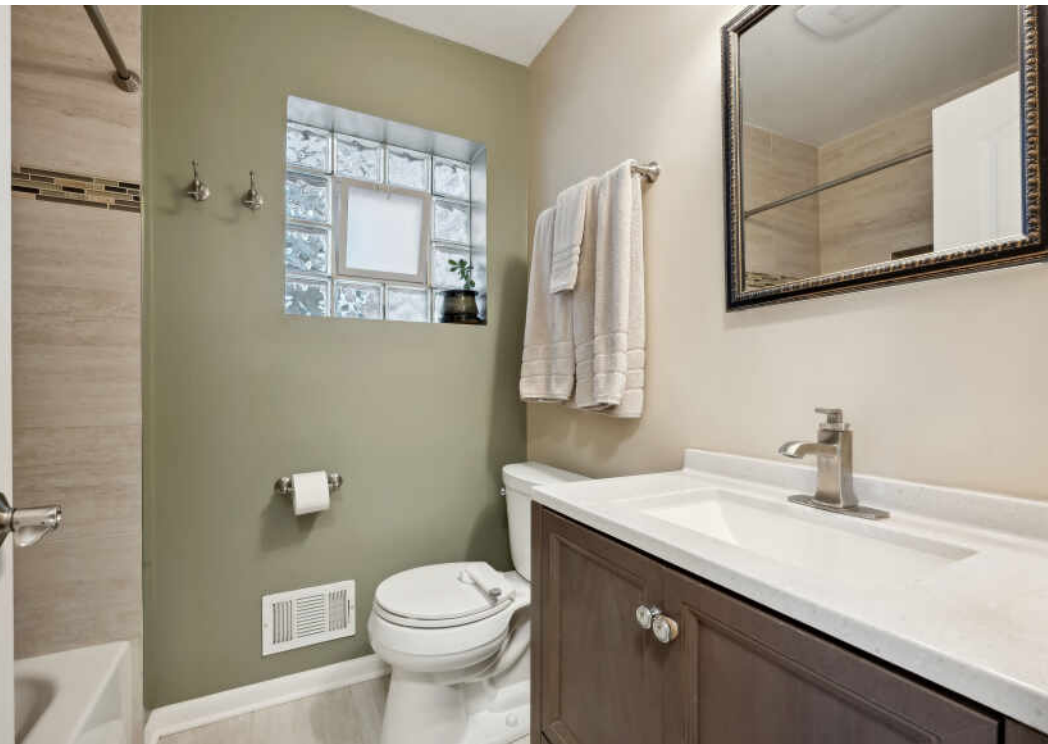
- Beautiful hardwood floors throughout main level.
- Newly tiled eat-in kitchen with newer appliances.
- Freshly remodeled full bathroom.
- King-sized primary bedroom + 3 flexible bedrooms with built-out closets.
- Finished basement with versatile second living space, abundant storage, and large 4th bedroom.
- Professionally landscaped backyard—perfect for barbecues and outdoor fun.
- 2-car garage and newer mechanicals (furnace 2023, AC 2024, water heater 2020).
- Prime Jefferson Park location: 2 blocks to Blue Line & Metra, Across from award-winning Beaubien School, Walk to parks, trails, Target, Mariano's, Starbucks, and Easy access to I-90, Edens, and Kennedy.



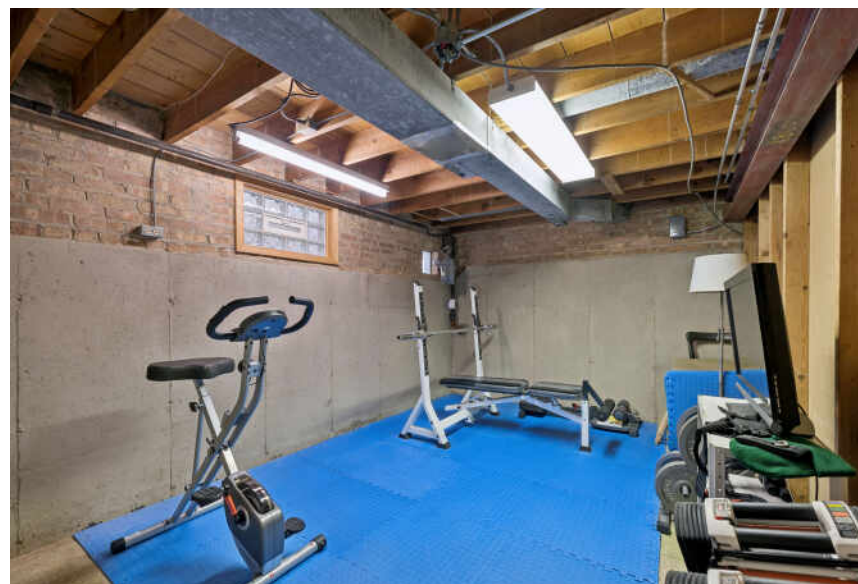




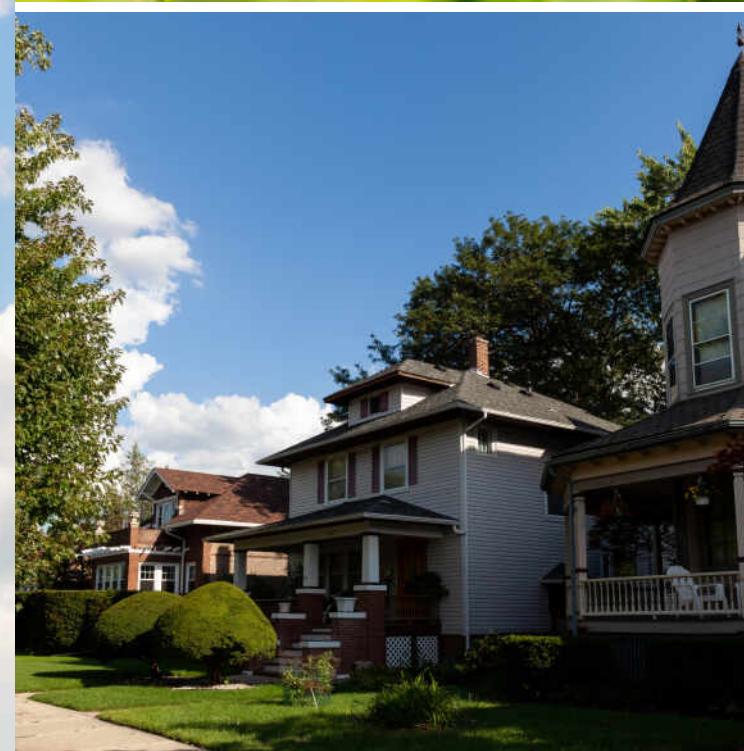












## HOME TO ONE OF THE AREA'S LARGEST TRANSPORTATION HUBS, **JEFFERSON PARK** IS KNOWN AS "THE GATEWAY TO CHICAGO."

The CTA Blue Line, Metra trains, and buses meet in the neighborhood along Milwaukee Avenue, making it easy for residents to get to surrounding communities and O'Hare International Airport.

The tight-knit community comes together for a variety of festivals at the neighborhood's namesake park, which spans seven acres. During the summer, Jeff Fest brings local and national musical acts to the park along with food and activities. Other annual events include the Taste of Polonia, drawing a large crowd at the Copernicus Center. Residents also enjoy the Ed Paschke Art Center, which houses the Chicago native's artwork, as well as a number of restaurants, some of which have been favorites among locals for decades.

Jefferson Park has seen an influx of new residents over the years, particularly among city dwellers looking for an alternative to the suburbs. The tree-lined neighborhood includes a range of housing choices, from mid-century single-family homes to new-construction condominiums.





FLOOR 1



FLOOR 2

NOTES \_\_\_\_\_

\_\_\_\_\_

\_\_\_\_\_

\_\_\_\_\_

\_\_\_\_\_

\_\_\_\_\_

\_\_\_\_\_

\_\_\_\_\_

\_\_\_\_\_

\_\_\_\_\_

\_\_\_\_\_





**DIANA GRINNELL**

312.505.9613

DIANA@ATPROPERTIES.COM



All specifications, features, designs, price, assessments, taxes and materials are subject to change without notice. Depicted floor plans and architectural renderings are only an artist's impression.

