

512 STONE CANYON CIRCLE
INVERNESS



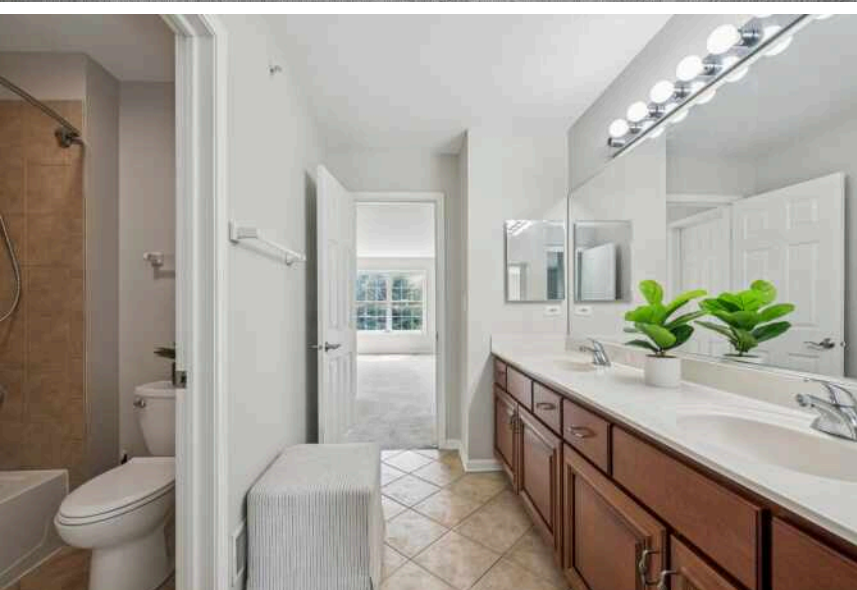


STUNNING TURNKEY TOWNHOME IN DESIRABLE WEATHERSTONE!

This beautifully updated residence blends sophisticated style with easy, low-maintenance living. Step inside to an open floor plan with soaring cathedral ceilings, dramatic staircase, and refinished hardwood floors flowing throughout the main level. Freshly painted in today's colors with new lighting and designer touches, every detail shines. The spacious living room flows seamlessly into a dining or family room with cozy fireplace-flexible to suit your lifestyle. An updated chef's kitchen will delight with abundant cabinetry, quartz counters, newer appliances, pantry, and an impressive two-story dining area framed by a wall of windows and French doors opening to a private paver patio-perfect for alfresco meals or morning coffee. The main-floor primary suite is a true retreat, featuring a luxe ensuite bath and its own fireplace for added warmth and charm. A chic powder room and convenient laundry with direct garage access complete the first level. Upstairs, a sunlit loft makes the ideal home office or study, while two spacious bedrooms share a beautifully appointed full bath. The finished lower level is designed for entertaining with coffered ceilings, slate flooring, a spectacular wet bar with seating for six, recreation space, exercise/flex area, guest bedroom, full bath, and generous storage. Outdoors, the expansive paver patio overlooks lush landscaping, creating a serene backdrop for relaxation. Perfectly located within Barrington's sought-after District 220 schools, and close to Metra, shopping, dining, and expressways. Recent mechanical updates include new HVAC (2024/25), roof (2023), and water heater (2024). Enjoy luxury, convenience, and comfort in this exceptional home.











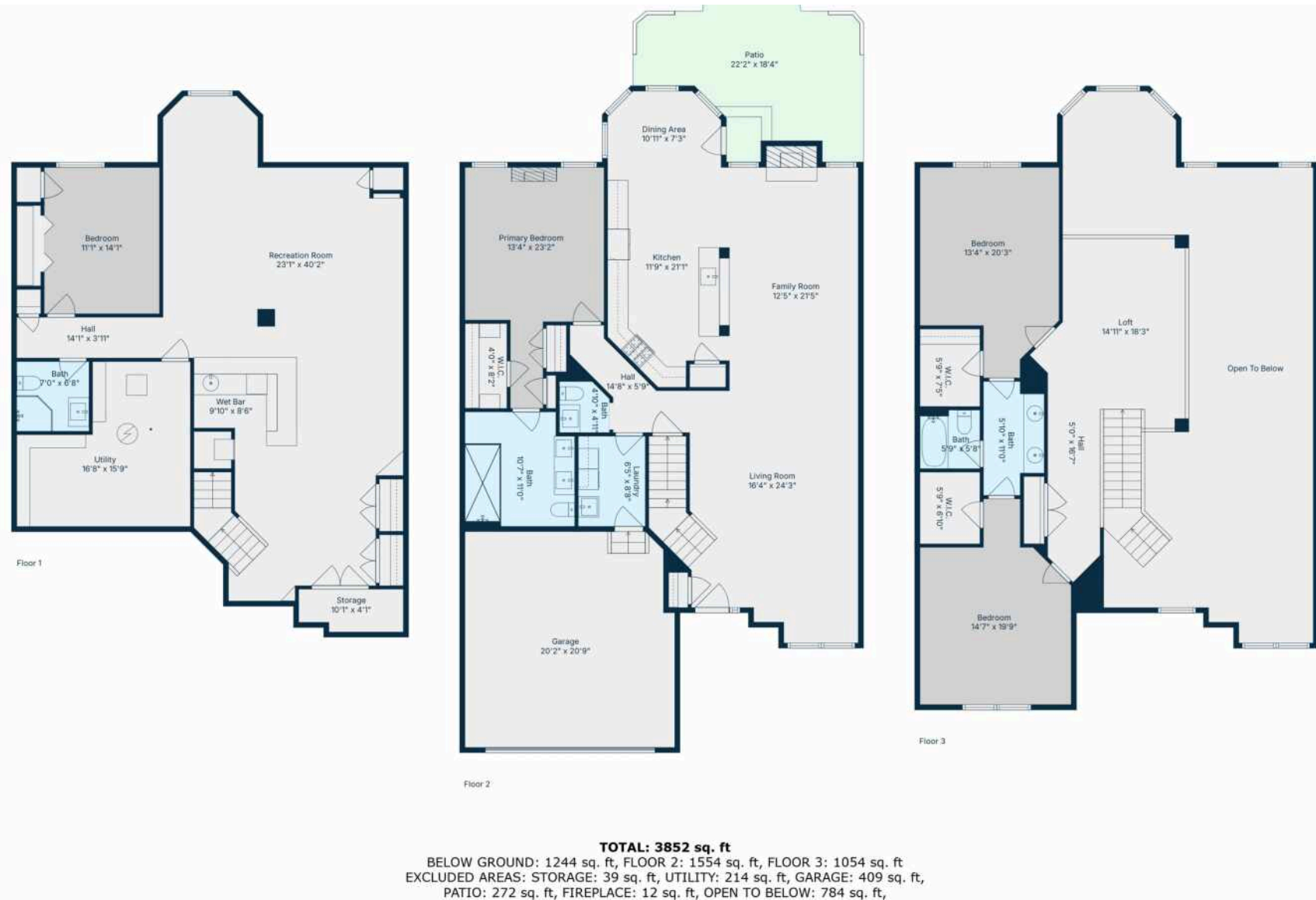
INVERNESS IS A QUIET RESIDENTIAL
COMMUNITY KNOWN FOR ITS ROLLING
LANDSCAPE AND NATURAL BEAUTY.

With beautiful scenery, ample green space, and wooded hills, Inverness reportedly earned its name because the land reminded developer Arthur T. McIntosh of the capital of the Scottish Highlands. Today, the village maintains its rural character and features a variety of attractive homes, most of which are set on an acre or more.

Residents enjoy Maggie Rogers Park, North Park, and South Park, as well as the forest preserves and golf courses that surround the community. The Inverness Park District maintains the three parks, which have pickleball and tennis courts at certain locations. The village is also home to the private Inverness Golf Club. Youth recreational activities are also offered throughout the year along with a variety of seasonal community events.

Situated in the heart of Inverness, Williamsburg Village is the community's main business district. The office complex matches the village's aesthetic and is conveniently located near I-90.

Commuters have access to Metra rail service in the neighboring communities of Palatine and Barrington.





JOHN MORRISON

(847) 409-0297

JOHN@MORRISONHOMETEAM.COM

WWW.MORRISONHOMETEAM.COM

@MORRISON_HOME_TEAM

