

515 AUSTIN STREET

DOWNERS GROVE

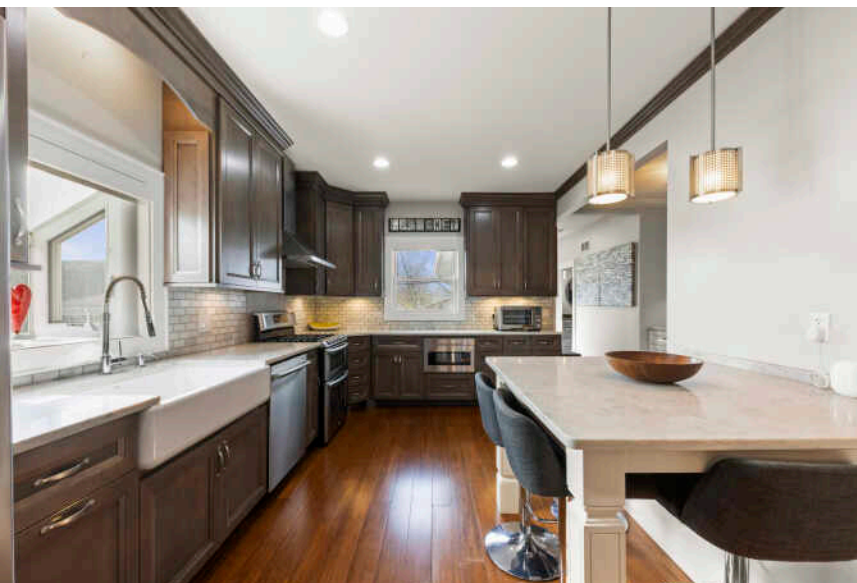
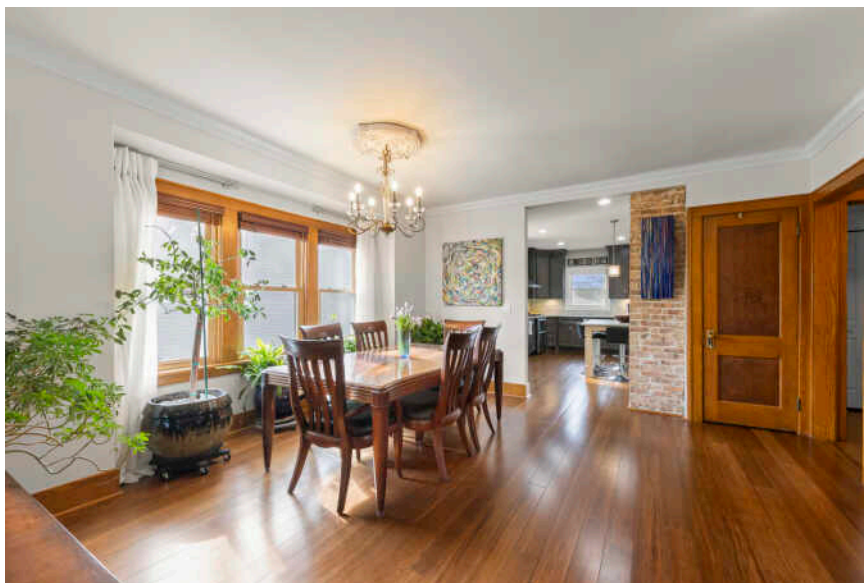
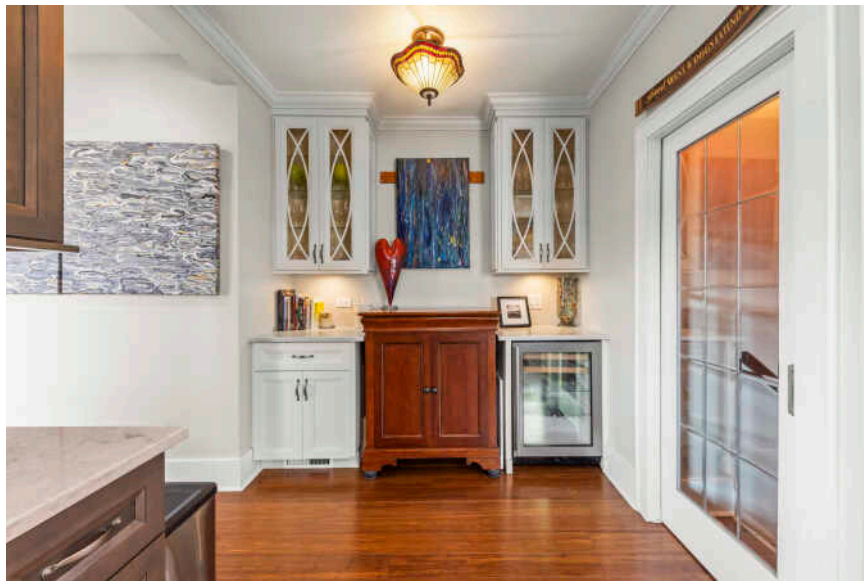
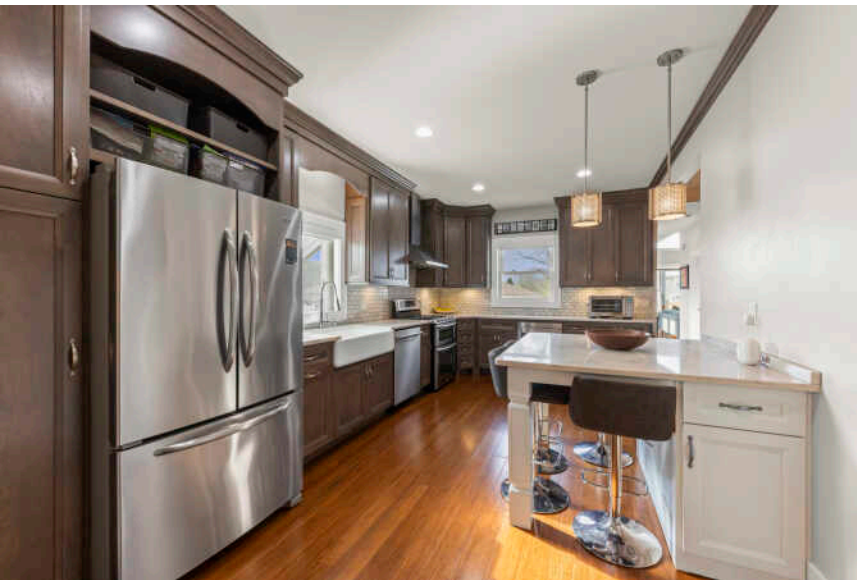
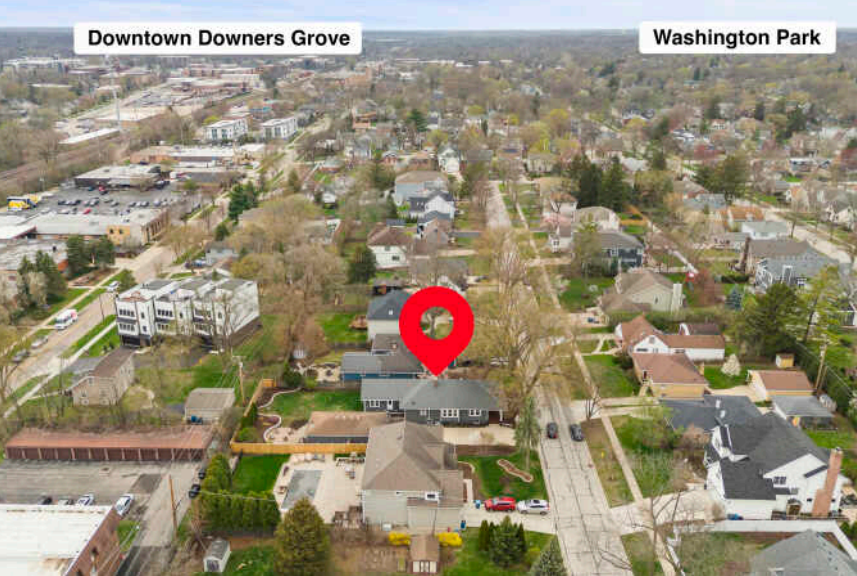


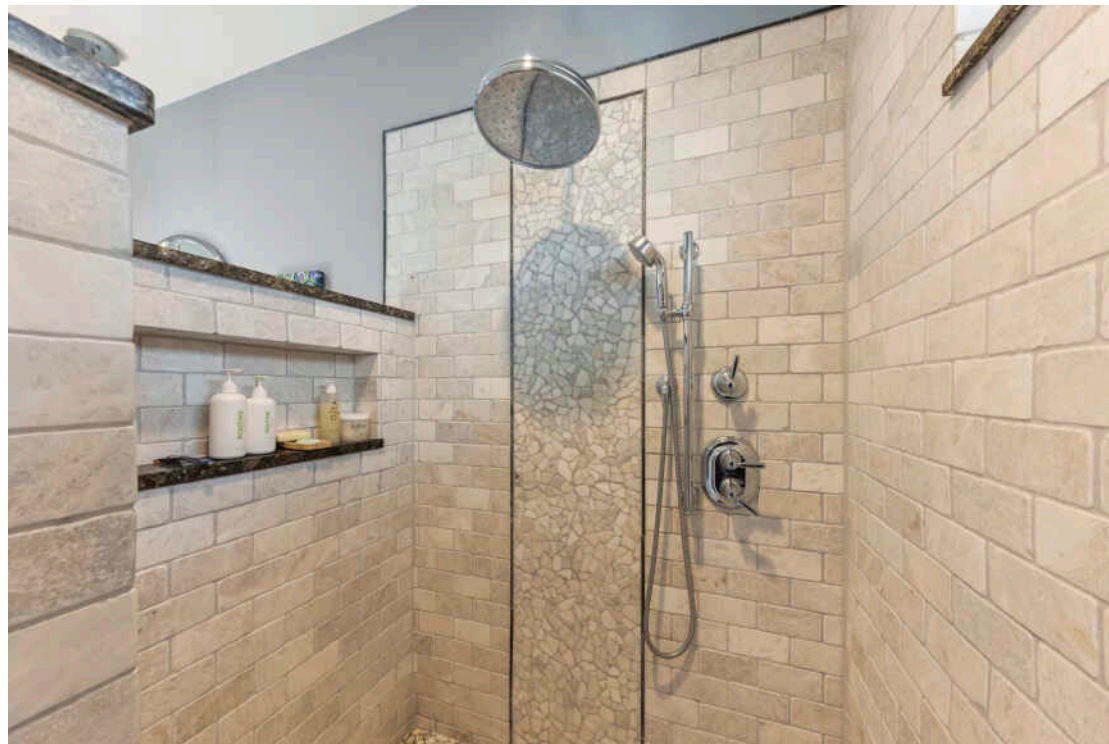


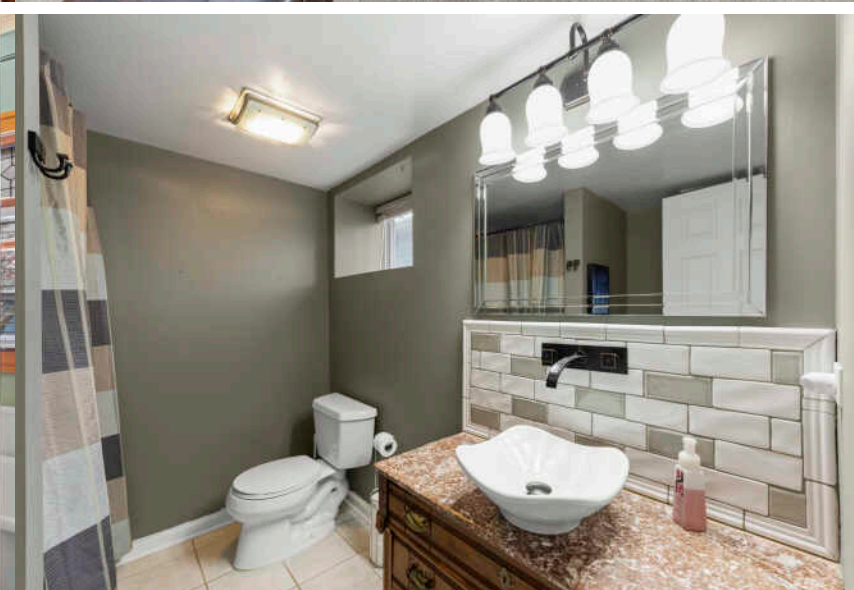
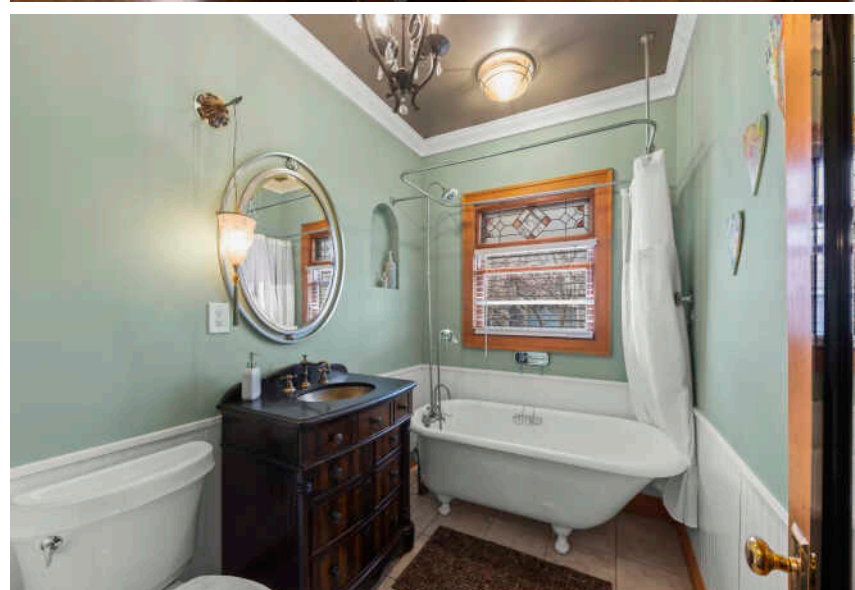
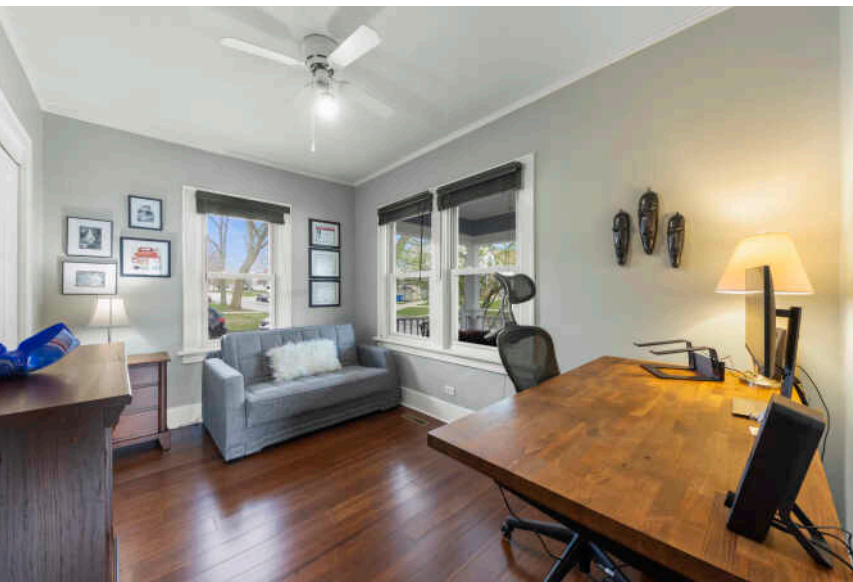
3 BEDROOM
3 BATH
TAXES: \$7,908

WELCOME TO NORTH DOWNERS GROVE

Experience the charm of sought after North Downers Grove with a phenomenal location...only a 15-minute walk to Downtown Downers Grove and Main St. train station with multiple express trains to the city in 25 minutes. Blocks to highly rated Lester Elementary. This charming bungalow with a 4-CAR tandem garage is set on a wide 70x146 lot and features a large and welcoming front porch, a roomy family room addition, updated kitchen and baths and a huge finished basement with a third full bath. The space is very roomy with 1,850 SF of living space on the first floor plus an additional 980 SF in the finished basement. Step outside to the deck and relax in the amazing backyard with fresh hardscape and a new fence...perfect for entertaining and relaxing by the firepit. The exterior and interior of the home were painted in 2024. All you have to do is move right in... Everything is done! Welcome Home! Sellers would like a 60-day close.

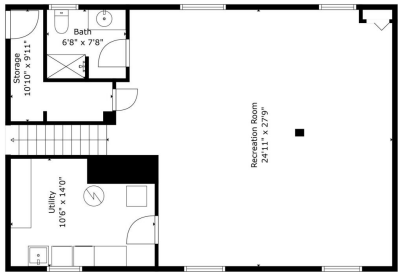




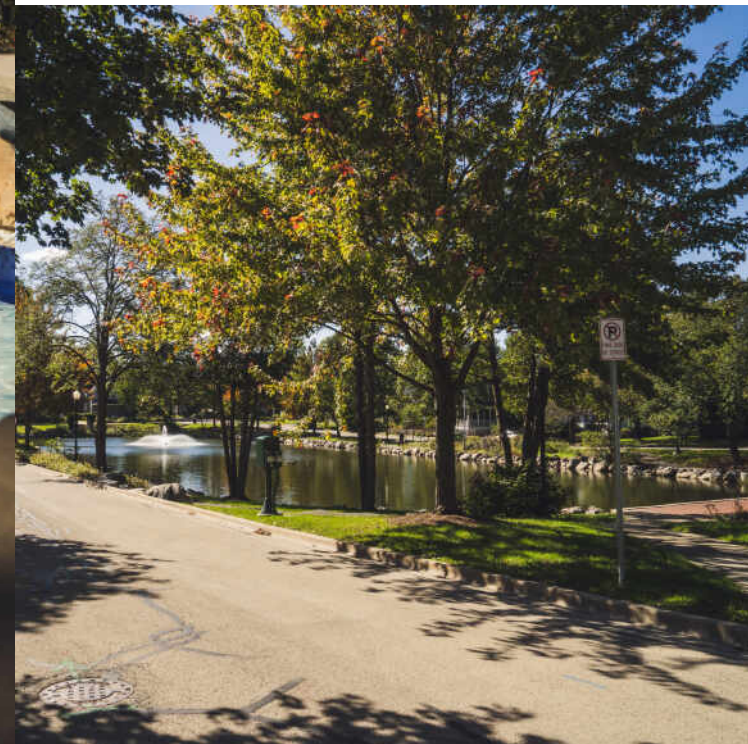




NOTES:
 1. ALL DIMENSIONS ARE APPROXIMATE.
 2. ALL DIMENSIONS ARE APPROXIMATE.
 3. ALL DIMENSIONS ARE APPROXIMATE.
 4. ALL DIMENSIONS ARE APPROXIMATE.
 5. ALL DIMENSIONS ARE APPROXIMATE.
 6. ALL DIMENSIONS ARE APPROXIMATE.
 7. ALL DIMENSIONS ARE APPROXIMATE.
 8. ALL DIMENSIONS ARE APPROXIMATE.
 9. ALL DIMENSIONS ARE APPROXIMATE.
 10. ALL DIMENSIONS ARE APPROXIMATE.



NOTES:
 1. ALL DIMENSIONS ARE APPROXIMATE.
 2. ALL DIMENSIONS ARE APPROXIMATE.
 3. ALL DIMENSIONS ARE APPROXIMATE.
 4. ALL DIMENSIONS ARE APPROXIMATE.
 5. ALL DIMENSIONS ARE APPROXIMATE.
 6. ALL DIMENSIONS ARE APPROXIMATE.
 7. ALL DIMENSIONS ARE APPROXIMATE.
 8. ALL DIMENSIONS ARE APPROXIMATE.
 9. ALL DIMENSIONS ARE APPROXIMATE.
 10. ALL DIMENSIONS ARE APPROXIMATE.



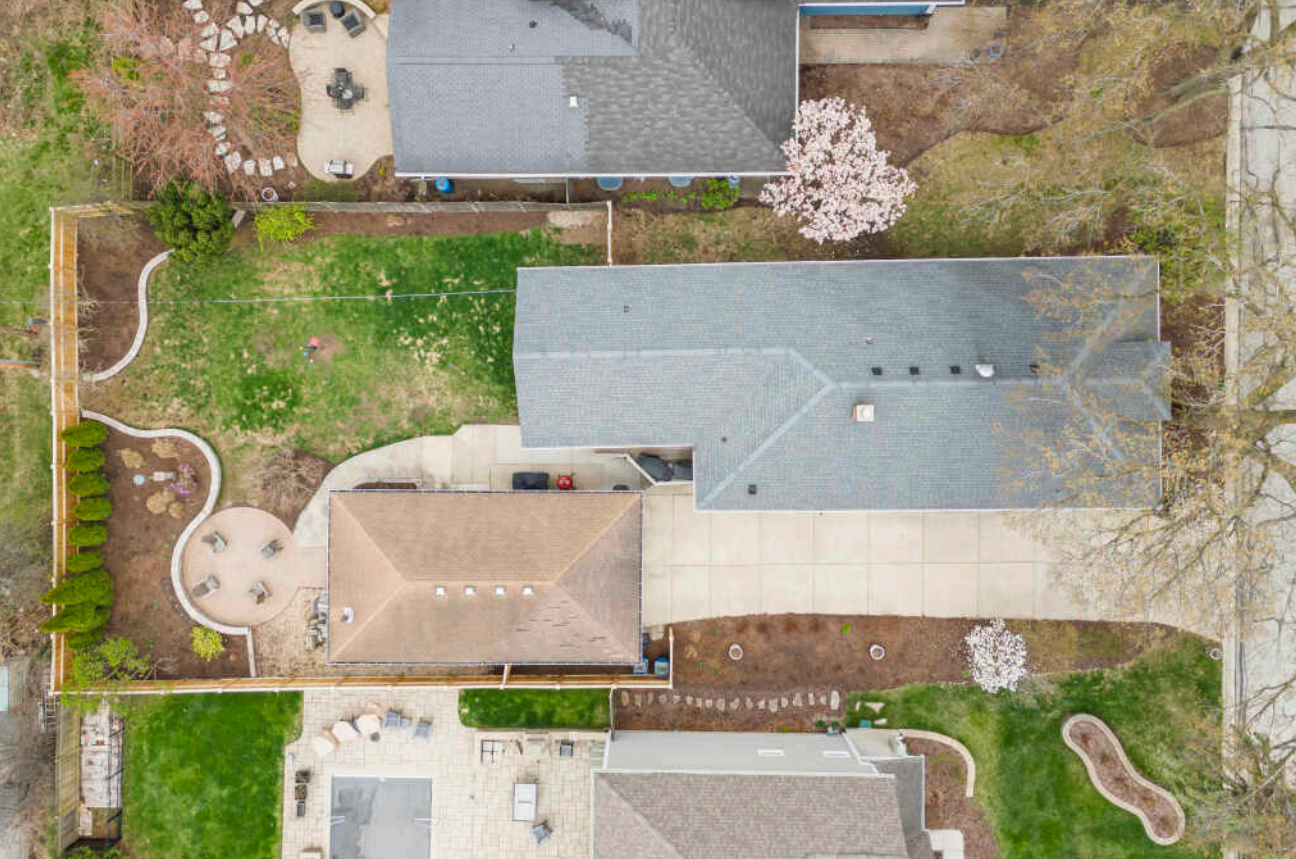
FORTUNATELY, **DOWNERS GROVE** DOESN'T LET FAME GO TO ITS HEAD.

The village has racked up more than its share of accolades, with *Forbes* naming it one of America's friendliest towns and *CNN* ranking it among the country's best places for a healthy retirement due to its abundance of parks and top-notch hospitals.

A varied housing stock exists in this robust community, ranging from historic homes from the mid-1800s to an assortment of Sears Roebuck Catalog Homes, which were built between 1908 and 1940 from purchased kits. New construction can also be found in the village.

Along with ample boutique shopping and upscale dining, Downers Grove hosts dozens of community events and festivals, attracting visitors and earning the village a place on the Chicago Tribune's "Top 10 List of Downtowns." The community is also home to the Downers Grove Museum, which includes the historic Blodgett House.

Metra's BNSF Railway has three stations in Downers Grove, providing direct transportation to Chicago.



NOTES _____

14 515 AUSTIN STREET

515 AUSTIN STREET 15



SAMANTHA SCHROEDER

708-712-0727

SAM@SAM-SCHROEDER.COM

WWW.SAM-SCHROEDER.COM

Samantha
SCHROEDER



CHRISTIE'S
INTERNATIONAL REAL ESTATE