

515 W BELDEN AVENUE UNIT 10
LINCOLN PARK



@properties®

CHRISTIE'S
INTERNATIONAL REAL ESTATE



ROOM DIMENSIONS

LIVING ROOM : 17' x 13'

DINING ROOM : 13' x 8'

KITCHEN : 8' x 11'

PRIMARY BEDROOM : 13' x 11'

SECOND BEDROOM : 14' x 10'

RECREATION ROOM : 17' x 25'

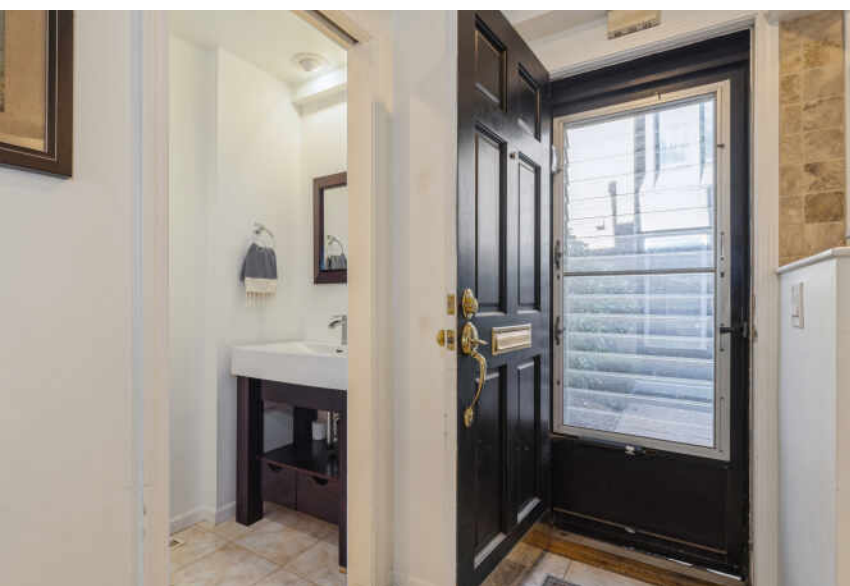
LAUNDRY/STORAGE : 17' x 9'

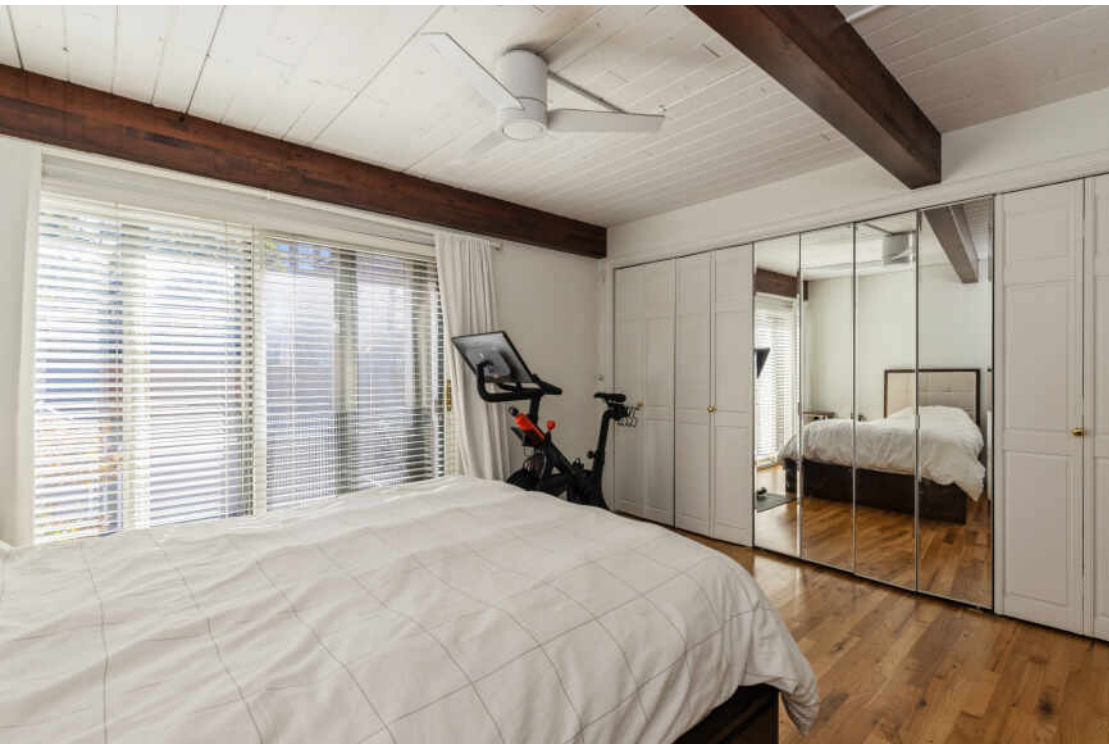
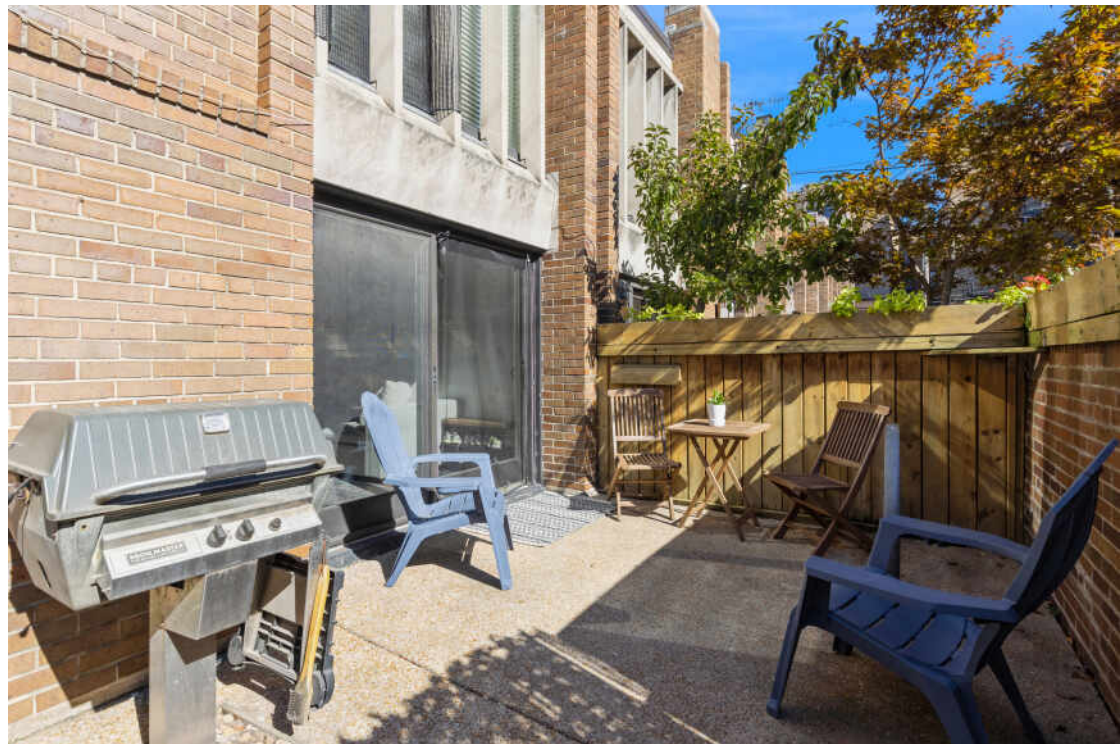
PATIO : 17' x 10'

2 BEDROOM

2.5 BATH

Beautifully situated on a quiet, tree-lined street in East Lincoln Park, this gorgeous 2-bedroom, 2.5-bathroom townhome on Belden Avenue offers spacious living in a charming, gated community. Just steps from Lincoln Elementary, Francis Parker School, Oz Park, and public transportation, this home features hardwood floors throughout the upper two levels and an open layout designed for comfort and style. The main level boasts a large living and dining area with a gas fireplace and mantel, a half bath, and a high-end kitchen with granite countertops, stainless steel appliances, under-cabinet lighting, and ample cabinet space. A sun-filled, south-facing patio off the living room provides plenty of space for outdoor entertaining, with room for a grill and patio set. Upstairs, the king-sized primary suite offers two large closets and direct access to a beautifully appointed bathroom with a jacuzzi tub, dual vanity, and separate shower-creating the perfect retreat. The second bedroom is also generously sized, with custom closet space and enjoys easy access to the shared full bath. The upstairs hallway features a large skylight, flooding the area with tons of natural light. The lower level serves as a flexible family or recreation room or office, complete with a laundry room with tons of storage, built-in shelving and cabinets, and a full bath - ideal for use as a guest or third bedroom. An exterior parking space located just off the patio is included. Enjoy unparalleled convenience with nearby access to Lincoln Park, the lakefront, Lincoln Park Zoo, grocery stores, boutique shops, and some of Chicago's best restaurants and bars.

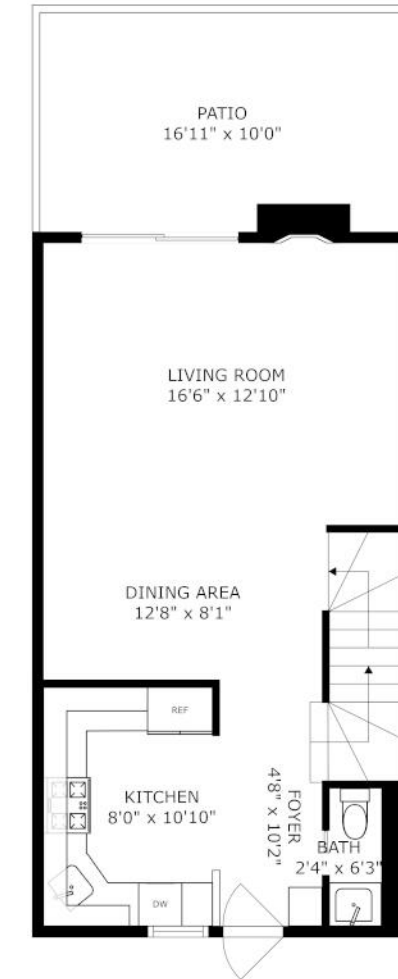








FLOOR 1



FLOOR 2



FLOOR 3

SIZES AND DIMENSIONS ARE APPROXIMATE, ACTUAL MAY VARY.



LINCOLN PARK RESIDENTS HAVE IT ALL - FROM THE ARTS TO ITS FAMED ZOO - RIGHT IN THEIR BACKYARD.

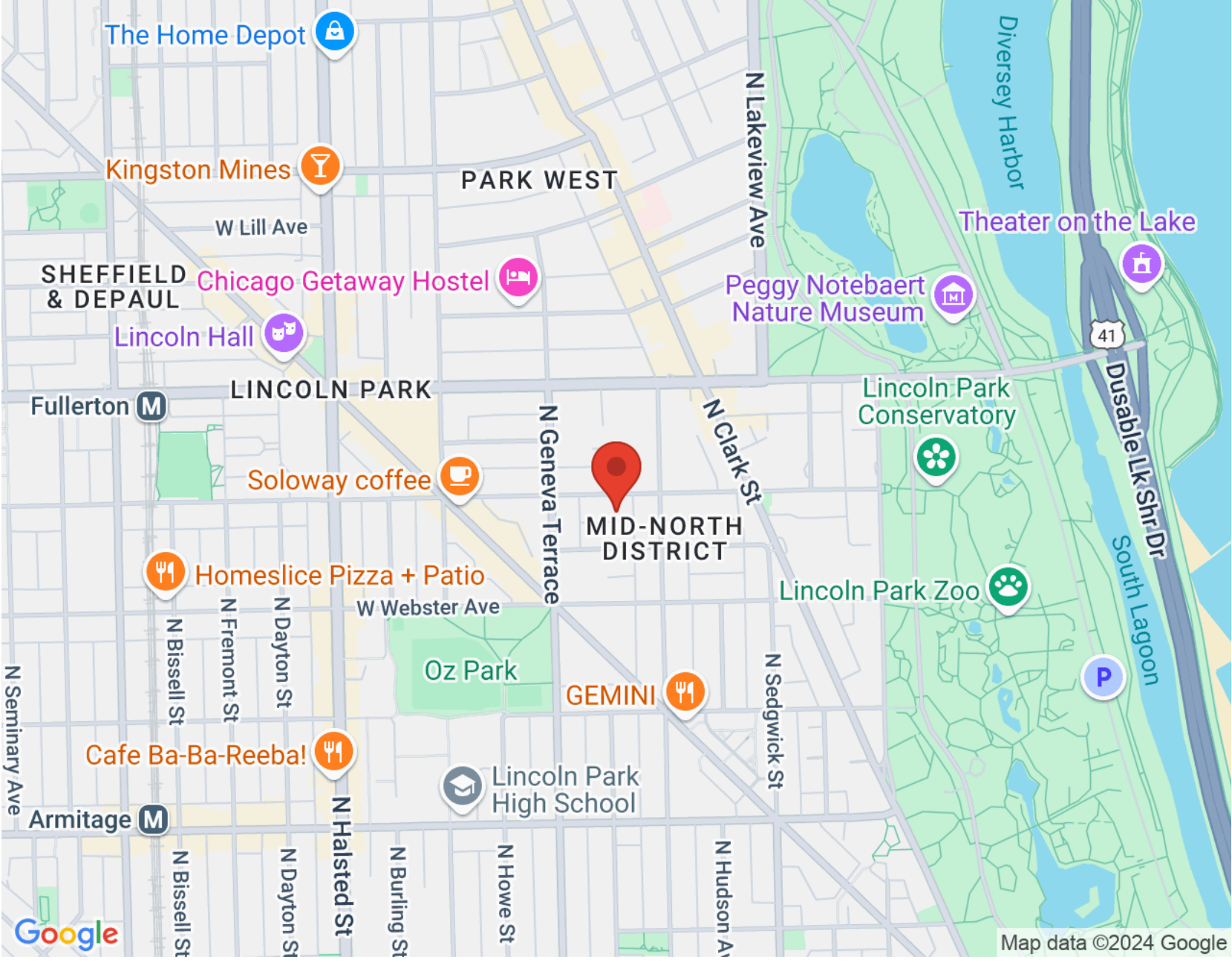
The neighborhood includes quiet tree-lined residential blocks, DePaul University, and two major museums in addition to the Lincoln Park Zoo, one of the country's oldest zoos. There's also a wide array of entertainment, eateries, and hotspots.

An evening in Lincoln Park might include seeing a play at the acclaimed Steppenwolf Theatre and dining at a Michelin-rated restaurant or a quaint neighborhood café. Sports fans will find as many dive bars with the game on as foodies will find fine-dining restaurants with al-fresco seating.

Lincoln Park is just as delightful by day. Residents are close to the lakefront and North Avenue Beach, parks, farmers markets, festivals, and countless shops, ranging from upscale boutiques on Armitage to larger retailers at the Clybourn Corridor.

Housing stock ranges from smaller townhomes and vintage condominiums to rehabs and new construction. Buyers around DePaul University can find loft condominiums in converted factories and warehouses. On its eastern edge, Lincoln Park features beautiful vintage brownstones along with high-rises with breathtaking views of the lake, park, North Pond Nature Sanctuary, and city skyline.

Located just two miles from downtown, Lincoln Park offers residents a quick commute to work. Public transportation abounds, with the CTA's Brown and Red lines serving the neighborhood in addition to several bus routes and Lake Shore Drive.



NOTES _____



JEFFREY JUNGBAUER

(312) 640-1321

JEFFREY@ATPROPERTIES.COM



JEFFREY
JUNGBAUER