

51 CHELSEA LANE

CARY





ROOM DIMENSIONS

LIVING ROOM : 17' x 13'

FAMILY ROOM : 19' x 21'

DINING ROOM : 10' x 11'

KITCHEN : 14' x 12'

PRIMARY BEDROOM : 13' x 16'

SECOND BEDROOM : 11' x 14'

THIRD BEDROOM : 10' x 11'

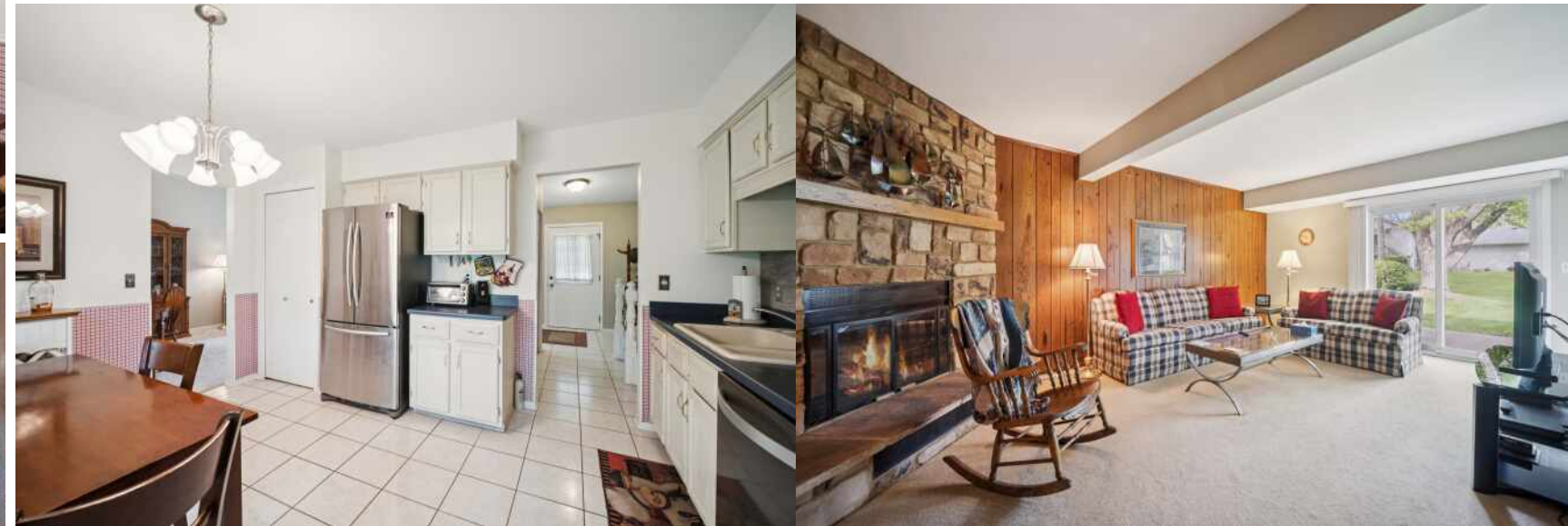
51 CHELSEA LN, CARY IL

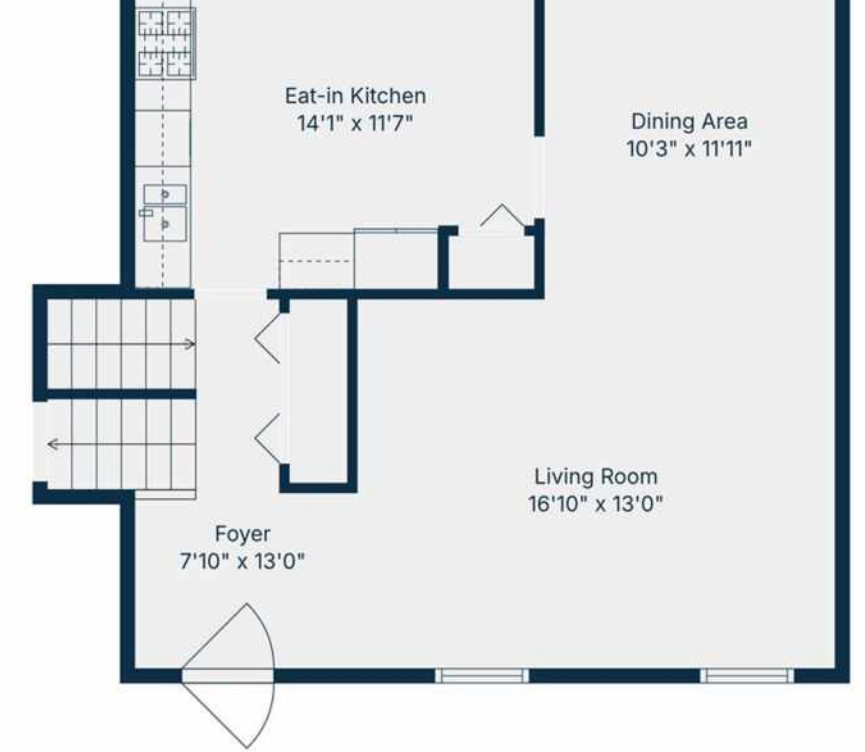
Welcome to this well maintained split level home located in the highly sought after Greenfield subdivision of Cary. Offering 3 bedrooms, 1.5 baths, and a functional layout designed for everyday living, this home combines comfort, updates, and value in a fantastic location. Once you step inside you will find bright and inviting living spaces with great natural light and a layout that offers both openness and separation where it matters most. The spacious kitchen flows easily into the dining and living areas, creating a comfortable space for both relaxing and entertaining. Upstairs, you'll find three generously sized bedrooms along with a full bathroom. The lower level provides additional living space perfect for a family room, home office, workout area, or playroom. The attached 2 car garage adds convenience and additional storage. Major updates have already been completed for peace of mind, including a brand new roof in 2025 and newer furnace and air conditioning system in 2023, allowing the next owner to move in with confidence. Located in one of Cary's most desirable neighborhoods, Greenfield offers a welcoming community feel while being close to parks, schools, shopping, dining, and commuter access. This is a fantastic opportunity to own a move in ready home with important updates already taken care of in a location buyers continue to love. This is a must see!

3 BEDROOM

1.1 BATH

TAXES: \$7,690





TOTAL: 1678 sq. ft
 Basement: 340 sq. ft, 1st floor: 638 sq. ft, 2nd floor: 700 sq. ft
 EXCLUDED AREAS: GARAGE: 418 sq. ft, UTILITY: 67 sq. ft, WALLS: 181 sq. ft



TOTAL: 1678 sq. ft
 Basement: 340 sq. ft, 1st floor: 638 sq. ft, 2nd floor: 700 sq. ft



TOTAL: 1678 sq. ft
 Basement: 340 sq. ft, 1st floor: 638 sq. ft, 2nd floor: 700 sq. ft



CARY IS A COMMUNITY ON THE MOVE.

Residents can bike, hike, canoe, kayak, cross country ski, skate, and golf at one of the village's three country clubs. There are also sports fields, playgrounds, parks, the Fox River, and popular Hollows Conservation Area.

A charming downtown, plentiful shopping, recreational areas, and a Metra station are just a few reasons why residents love this McHenry County village.

The Metra station is on the site of Cary's first railway station built in 1863. The railroad played a key role in Cary's evolution from a farming community to the suburb it is today. The railroad enabled farmers to sell their produce and pickles to Chicago and St. Louis buyers, expanding the local economy.

A range of housing is available including single-family homes, townhomes, and apartments.



NOTES _____



DAN DRAKE

847.347.3484

DANDRAKE@ATPROPERTIES.COM

DAN DRAKE
RESIDENTIAL