

5220 W PATTERSON AVENUE
PORTAGE PARK

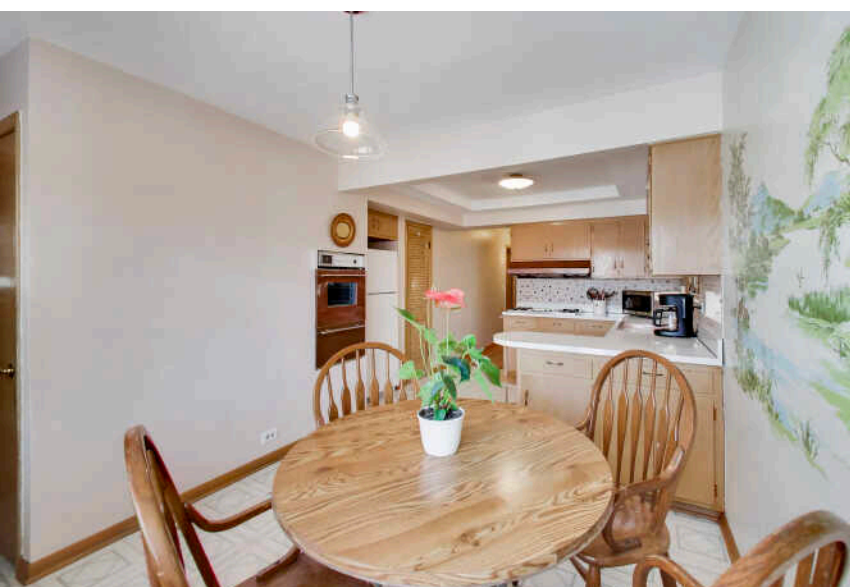
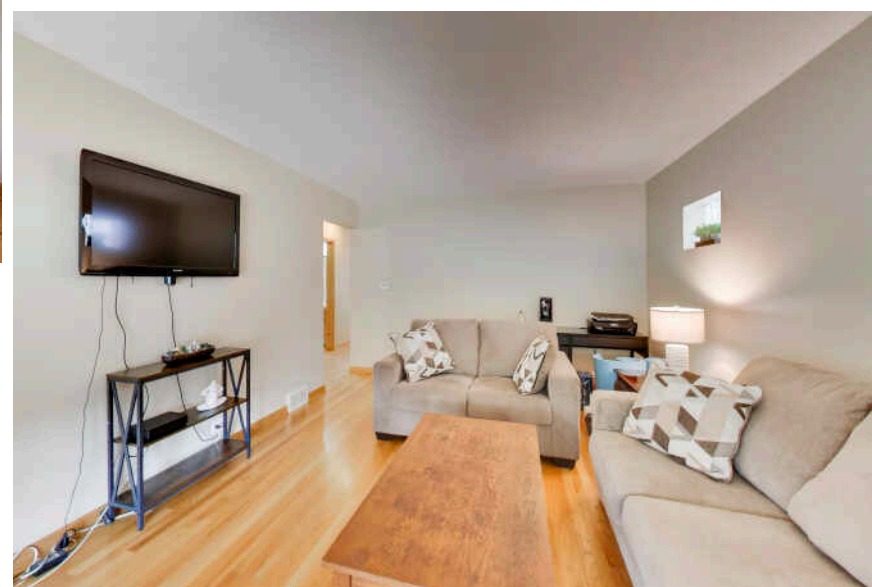
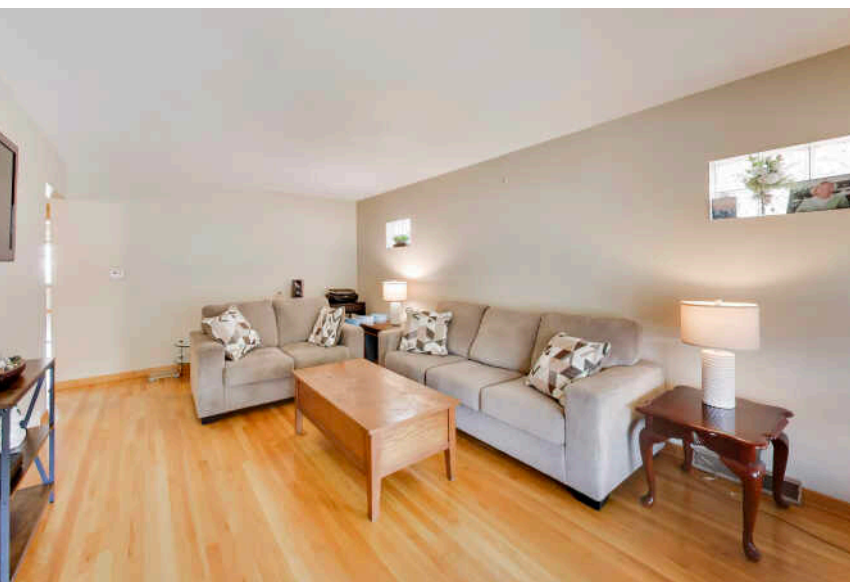
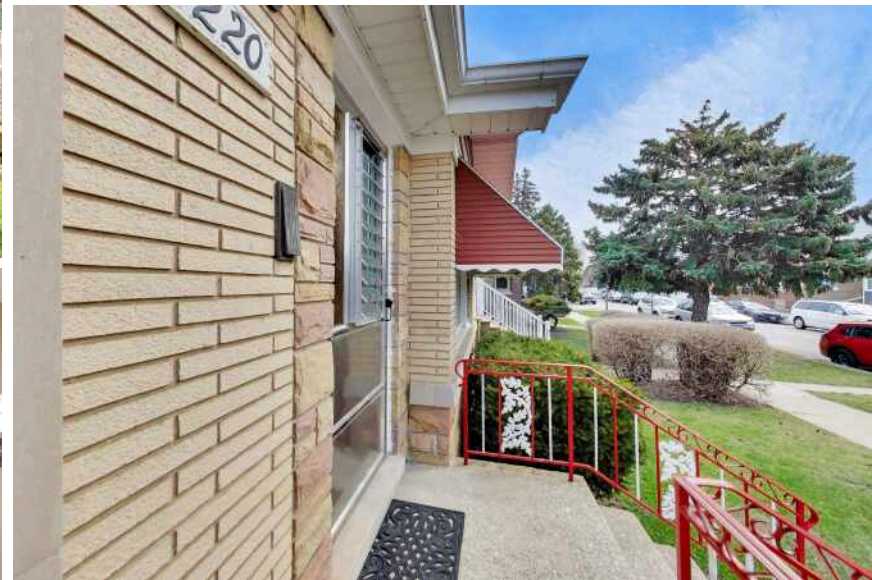


@properties®

CHRISTIE'S
INTERNATIONAL REAL ESTATE

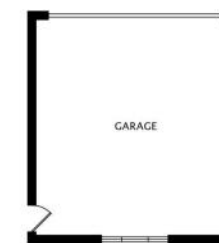


Charming solid brick ranch with endless potential. A classic Chicago home that is on quiet residential Patterson Street. This house offers a wonderful opportunity to create your ideal home. 3 bedrooms on 1st floor and 1.5 baths. Another bedroom and bath bedroom in the basement. 2.5 baths in total. The main level features a sunny south facing living room and a cute vintage kitchen, hardwood floors throughout. The enclosed back porch is additional flexible living space-ideal for a mudroom or seasonal enjoyment. Freshly painted throughout. The exterior was recently freshly painted also. The basement includes a 2nd kitchen, bathroom and bedroom offering space for extended family, or an in-law arrangement. This property presents a chance for buyers to bring their personal style to a house with great bones and lasting quality. The fenced yard and 2.5 garage are ready for you and summer fun! Estate owned property sold in its current condition.





LOWER
1227 sq ft BELOW GRADE



GARAGE



AS THE CITY'S STREETCAR LINE WAS EXTENDED, RESIDENTS DISCOVERED **PORTAGE PARK**, A SMALL ENCLAVE ON THE CITY'S NORTHWEST SIDE.

The neighborhood was a breath of fresh air for residents escaping crowded city tenements. Today's residents still enjoy the respite that the neighborhood offers, along with its beautiful parks and access to public transit.

Homes are at the heart of this community, which is part of Chicago's historic Bungalow Belt. The majority of homes are classic bungalows or single-family homes, with a few condominium buildings in the mix.

Portage Park's namesake park in the neighborhood's center is the largest on the city's Northwest Side. A community gem since 1913, the park has walking trails, playgrounds, wide-open spaces, and a pool that was used for the U.S. Olympic Team time trials in the 1970s.

Along Irving Park Road there is an eclectic mix of eateries including traditional steakhouses, classic diners, and casual coffee shops. There are also bars ranging from trendy cider houses and breweries to small dives and karaoke hotspots. Shopping is abundant in the Six Corners area with a resurgence of new shops.

Portage Park is accessible by the CTA Blue Line's Montrose Station and Metra's Milwaukee District North stop just west of the expressway.



BETH DUFFY

(847) 420-9708

BETHDUFFY@ATPROPERTIES.COM

bd beth duffy
it's a great day to buy a house

@properties® | CHRISTIE'S
INTERNATIONAL REAL ESTATE