

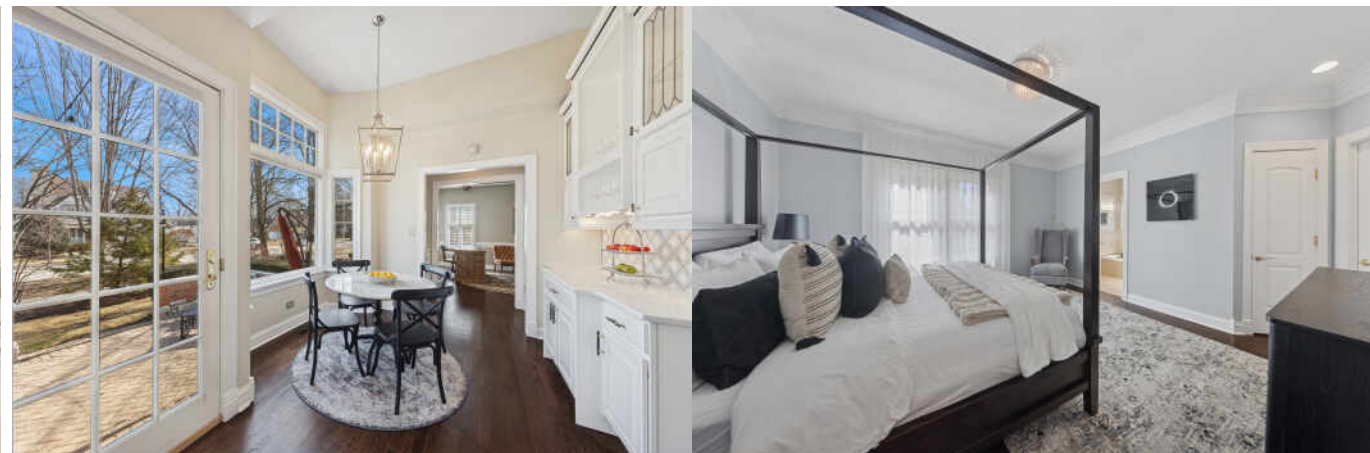
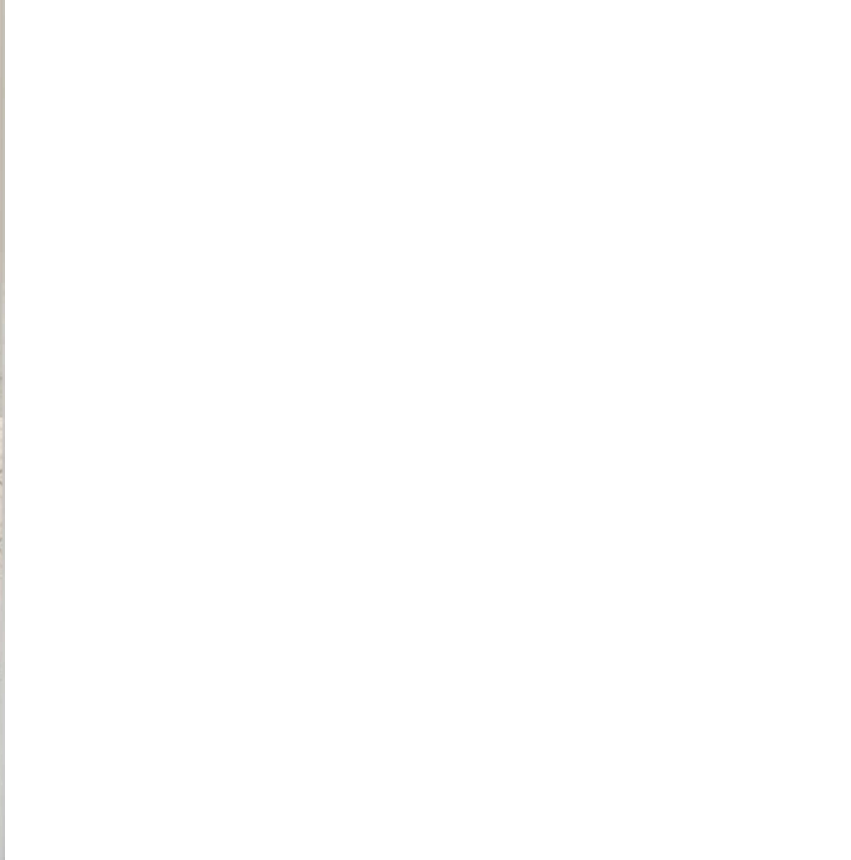
522 N COUNTY LINE ROAD  
HINSDALE

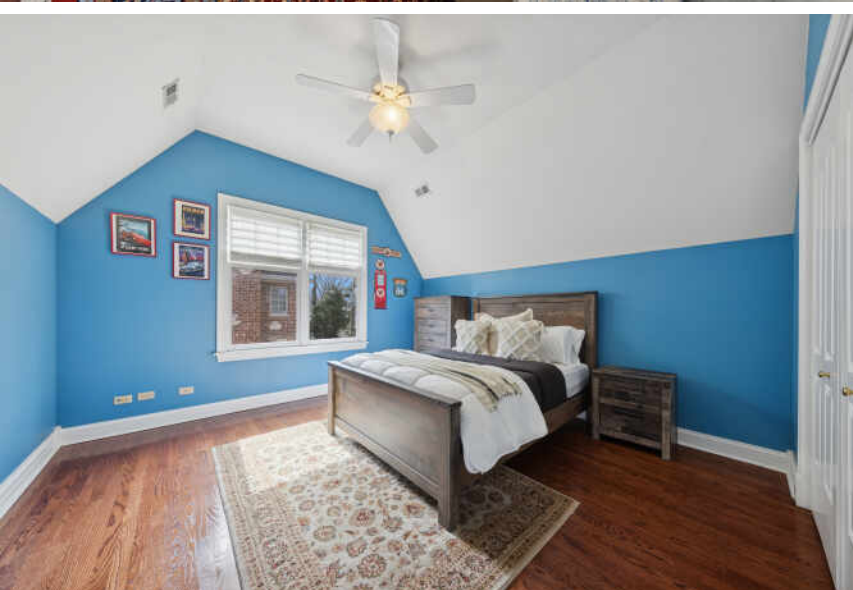
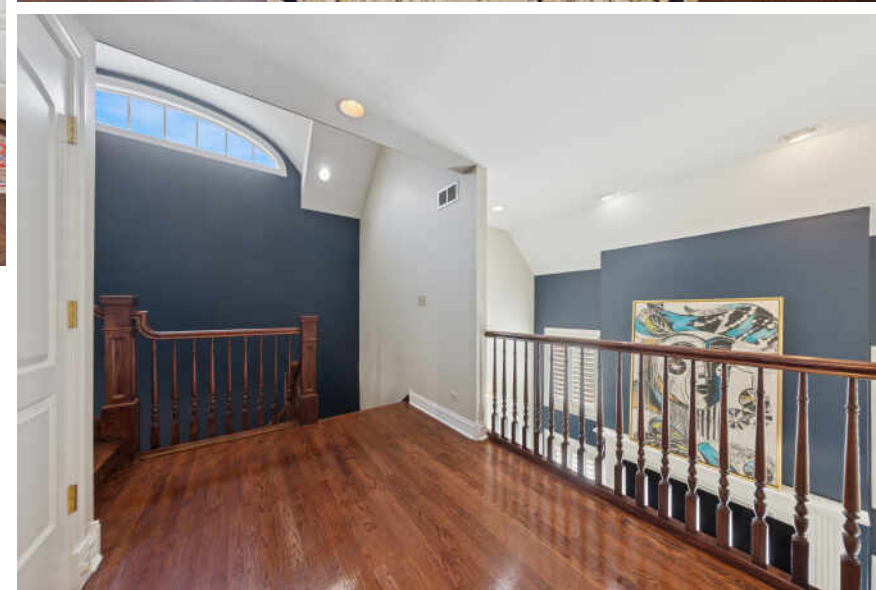
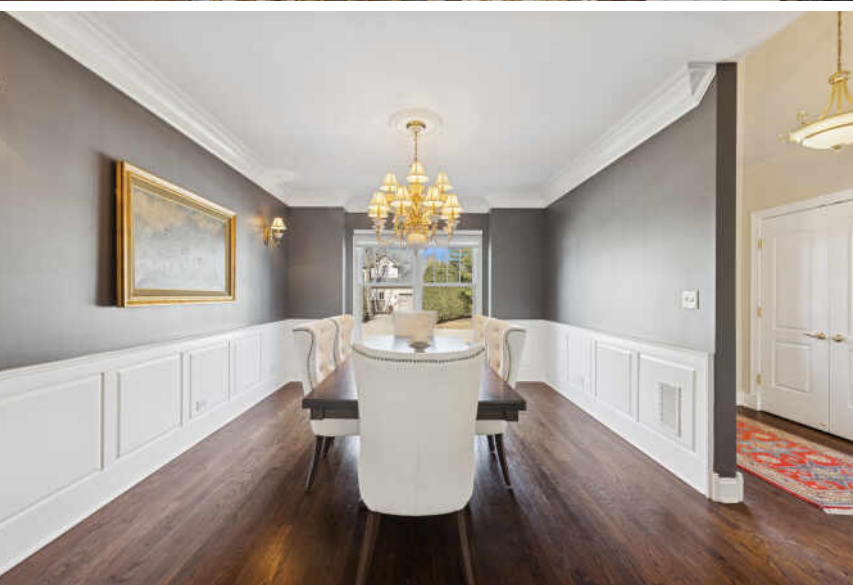


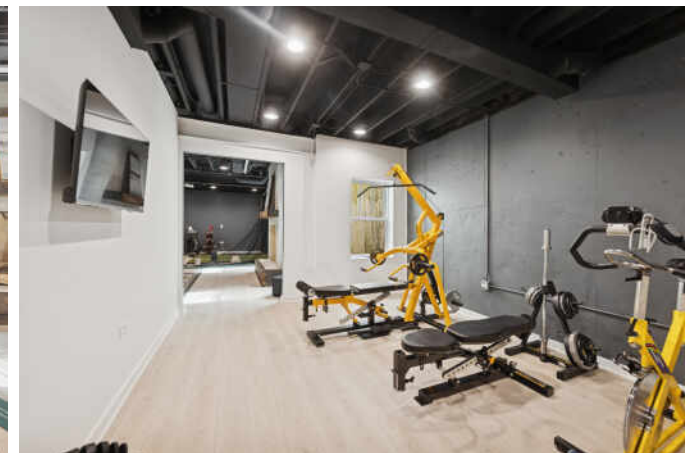


6 BEDROOM  
4.1 BATH

WELCOME TO 522 NORTH COUNTY LINE ROAD,  
WHERE LUXURY MEETS COMFORT IN THIS  
ELEGANT 5,638 SF HOME!









BASED ON CONCEPTS AND APPROXIMATE. ACTUAL MAY VARY.



BASED ON CONCEPTS AND APPROXIMATE. ACTUAL MAY VARY.



BASED ON CONCEPTS AND APPROXIMATE. ACTUAL MAY VARY.



**HINSDALE'S** ROLLING, WOODED LANDSCAPE, HISTORIC DOWNTOWN, AND BEAUTIFUL HOMES ATTRACT SOME OF THE STATE'S MOST AFFLUENT RESIDENTS, EARNING THE SUBURB ITS RANKING AS ONE OF THE WEALTHIEST ZIP CODES IN ILLINOIS.

Downtown Hinsdale offers a step back in time. The downtown district is on the National Register of Historic Places, with several historic buildings dating back to before the community was incorporated in the 1870s. Residents and visitors will also find award-winning restaurants that will satisfy any palate along with a variety of shops, from jewelry stores and upscale boutiques to craft shops and more.

The community has a wealth of amenities such as the Hinsdale Community Swimming Pool, Katherine Legge Memorial Park, and Burlington Park, which is home to various annual events including the farmers market, Fine Arts Festival, and Uniquely Thursdays concert series. There are also numerous parks and athletic facilities for those who enjoy sports like tennis, baseball, and soccer.

Hinsdale has easy access to the Tri-State Tollway, Stevenson Expressway, and three train stations along Metra's BNSF Railway.





## MELISSA LIVELY

M: 312-887-9575

O: 630-230-0500

MELISSALIVELY@ATPROPERTIES.COM

30 S. LINCOLN ST., HINSDALE, IL 60521