

5241 W DAKIN STREET
PORTAGE PARK





ROOM DIMENSIONS

FOYER : 11' × 7'

LIVING ROOM : 12' × 11'

DINING ROOM : 13' × 12'

KITCHEN : 21' × 9'

BREAKFAST ROOM : 8' × 7'

PRIMARY BEDROOM : 22' × 12'

PRIMARY WALK-IN CLOSET : 9' × 6'

SECOND BEDROOM : 18' × 11'

THIRD BEDROOM : 11' × 9'

FOURTH BEDROOM : 11' × 9'

RECREATION ROOM : 24' × 18'

LAUNDRY ROOM : 9' × 9'

STORAGE : 17' × 8'

UTILITY ROOM : 15' × 8'

FRONT PORCH : 9' × 7'

COVERED PATIO : 20' × 5'

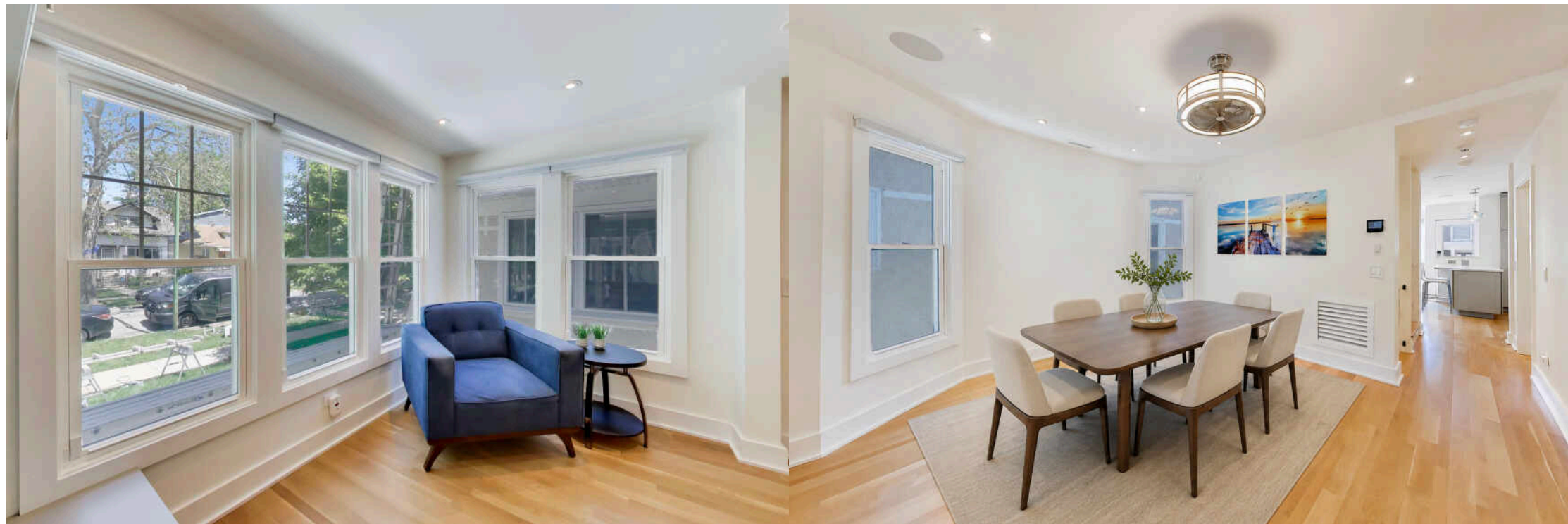
4 BEDROOM

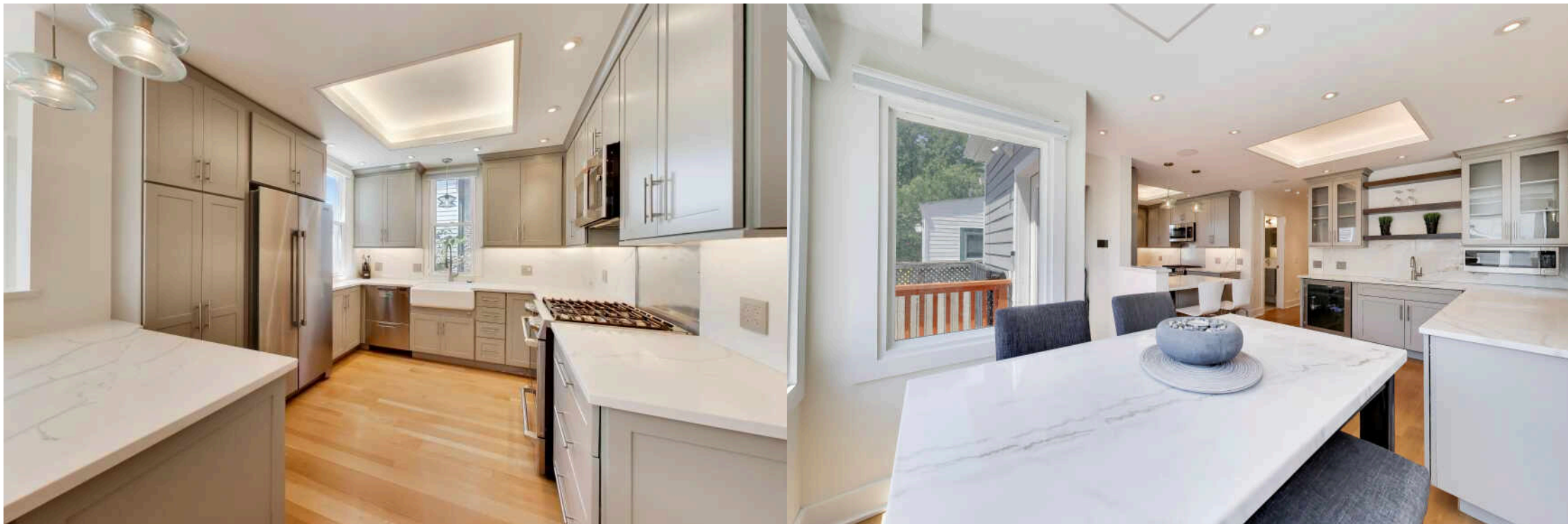
3.1 BATH

**TAXES: \$6,632.47 (2024, NO
EXEMPTIONS)**

COMPLETELY REIMAGINED 4-BED, 3.5-BATH BUNGALOW IN THE HEART OF PORTAGE PARK.

Originally intended to be a forever home, the current owners thoughtfully gutted this home down to the studs and rebuilt it from the ground up with a level of care, quality, and attention to detail that is rarely found in today's market. Life plans changed, but the result is an exceptional home that benefits from countless upgrades and design choices made for long-term living-not resale. Flooded with natural light and timeless, high-end selections throughout, the main level offers an inviting living room, dining room, expansive eat-in kitchen, two spacious bedrooms, and a beautifully appointed full bath. Upstairs, the incredible primary suite serves as a true retreat, featuring an oversized bedroom, organized walk-in closet, built-in vanity area, and a spa-like bath complete with a Japanese soaking tub, separate shower, and dual vanity. A generous second bedroom and full bath complete the level, with the flexibility to divide the bedroom into two rooms. The lower level is equally impressive, offering a laundry room with a dog-washing station, powder room, and an expansive recreation space with a full bar-perfect for entertaining, movie nights, game days, and gathering with friends and family. Outside, every inch of the property has been maximized with a welcoming front porch, rear deck, paver patio, and a fully outfitted garage that adds even more functionality. And the location? Just blocks from Portage Park itself-one of Chicago's most beloved parks-featuring pools, athletic fields, tennis courts, playgrounds, walking paths and community programming. Combined with charming tree-lined streets, local restaurants, coffee shops, and easy access to transportation, it's easy to see why Portage Park continues to be a sought-after neighborhood. A truly special home where thoughtful design, exceptional craftsmanship, and an unbeatable location come together.











AS THE CITY'S STREETCAR LINE WAS EXTENDED, RESIDENTS DISCOVERED **PORTAGE PARK**, A SMALL ENCLAVE ON THE CITY'S NORTHWEST SIDE.

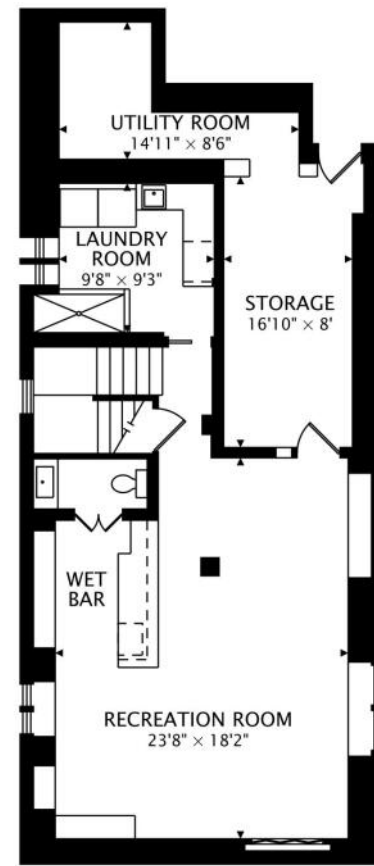
The neighborhood was a breath of fresh air for residents escaping crowded city tenements. Today's residents still enjoy the respite that the neighborhood offers, along with its beautiful parks and access to public transit.

Homes are at the heart of this community, which is part of Chicago's historic Bungalow Belt. The majority of homes are classic bungalows or single-family homes, with a few condominium buildings in the mix.

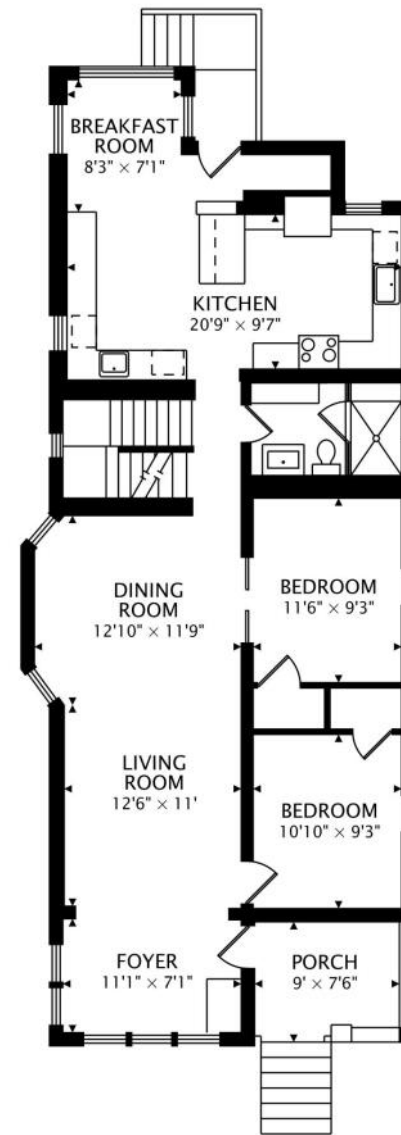
Portage Park's namesake park in the neighborhood's center is the largest on the city's Northwest Side. A community gem since 1913, the park has walking trails, playgrounds, wide-open spaces, and a pool that was used for the U.S. Olympic Team time trials in the 1970s.

Along Irving Park Road there is an eclectic mix of eateries including traditional steakhouses, classic diners, and casual coffee shops. There are also bars ranging from trendy cider houses and breweries to small dives and karaoke hotspots. Shopping is abundant in the Six Corners area with a resurgence of new shops.

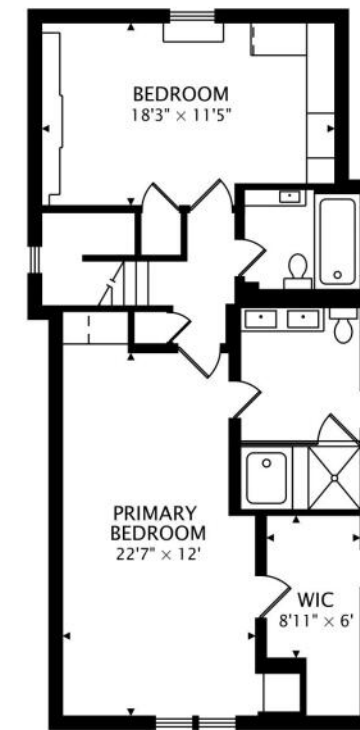
Portage Park is accessible by the CTA Blue Line's Montrose Station and Metra's Milwaukee District North stop just west of the expressway.



LOWER
1066 sq ft



MAIN
1239 sq ft



SECOND
912 sq ft



AMANDA MCMILLAN

AMANDA@CHICAGOHOMEPARTNER.COM

CHICAGOHOMEPARTNER.COM

773-537-1300