

525 W HAWTHORNE PLACE #1401
EAST LAKEVIEW





ROOM DIMENSIONS

FOYER : 12' × 8'

LIVING/DINING ROOM : 26' × 15'

KITCHEN : 8' × 9'

BEDROOM 1 : 18' × 12'

WALK-IN CLOSET : 5' × 5'

BEDROOM 2 : 12' × 9'

ENJOY FAR-REACHING SKYLINE VIEWS

Fresh and filled with natural light, this home offers far-reaching views of the Chicago skyline from every window. The open great room is anchored by bay windows that capture stunning south and west views, wrapping all the way back to Wrigley Field. The home has just been painted throughout, with brand-new carpeting in both well-sized bedrooms. The primary bedroom includes two closets, one of which is a walk-in. The bathroom has been thoughtfully updated with new tile, modern hardware, a vanity, and a glass-enclosed shower. This well-maintained, pet-friendly building offers exceptional management and ongoing improvements. Residents enjoy full-service amenities including 24-hour door staff, on-site management and engineers, an outdoor pool, a recently resurfaced sundeck with gazebos and grills, a fitness center, library, package room, and Tide Cleaners. A deeded parking space in the attached heated garage and a dedicated storage locker are included. Ideally located in the heart of Lakeview, just moments from the lakefront, parks, dining, and transit.

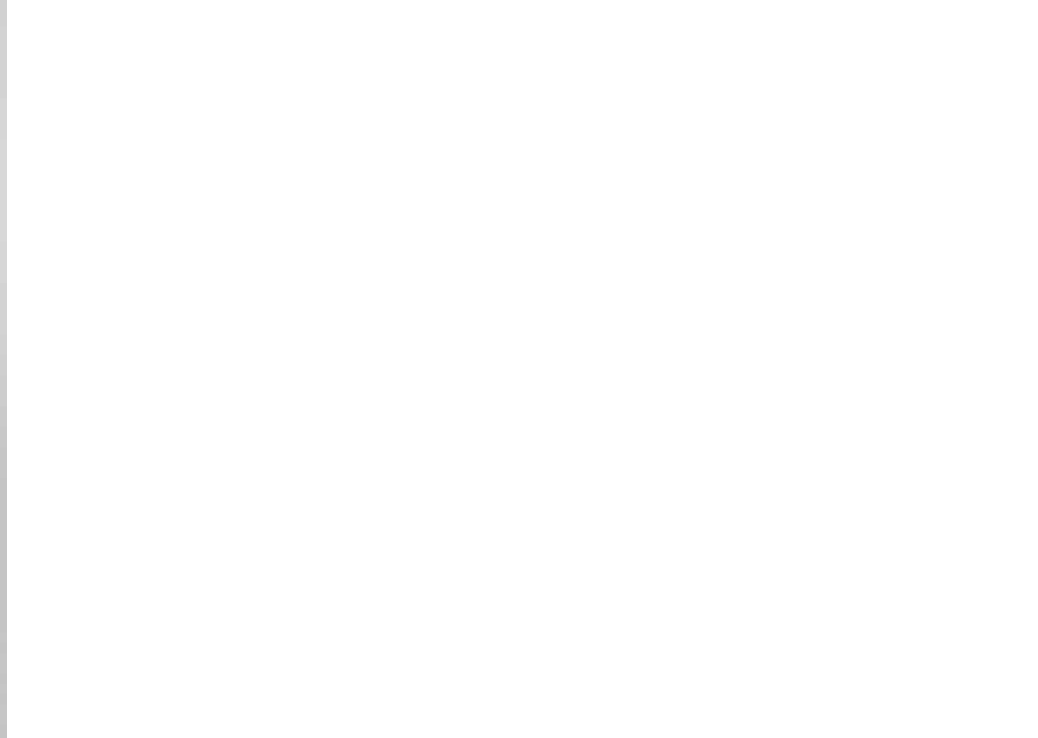


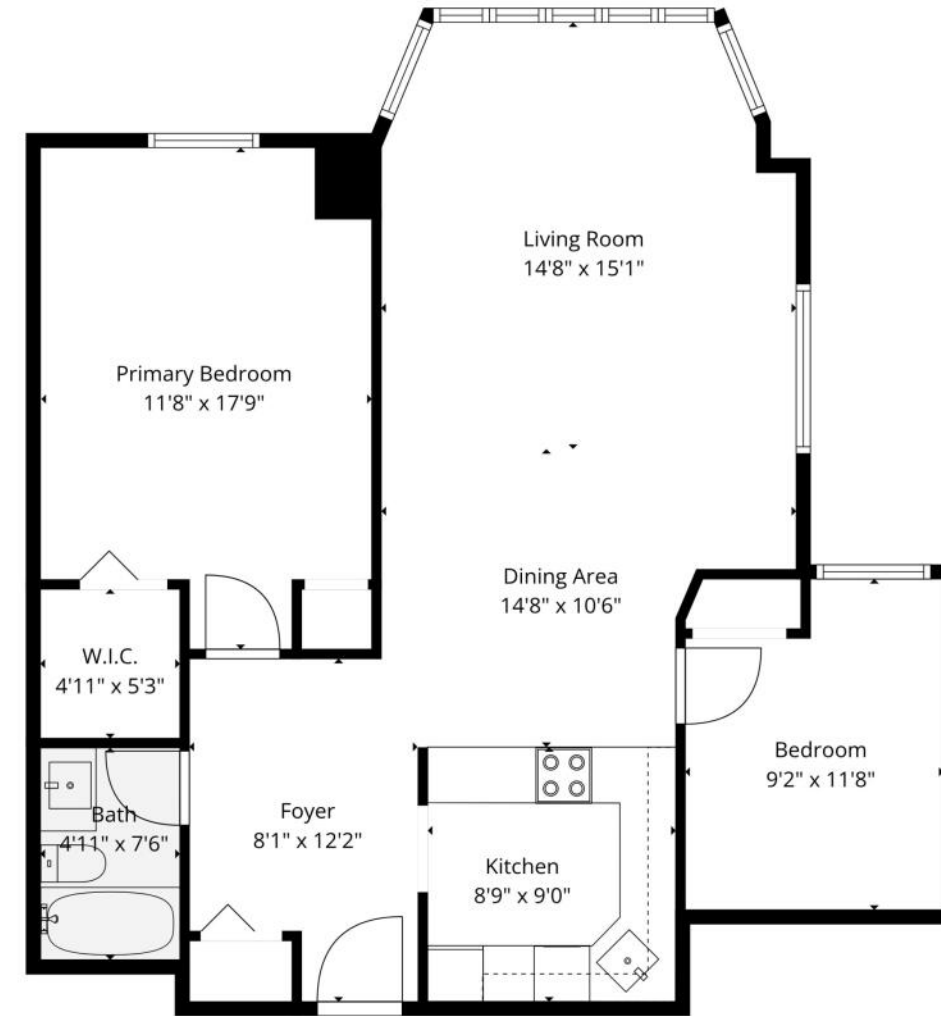
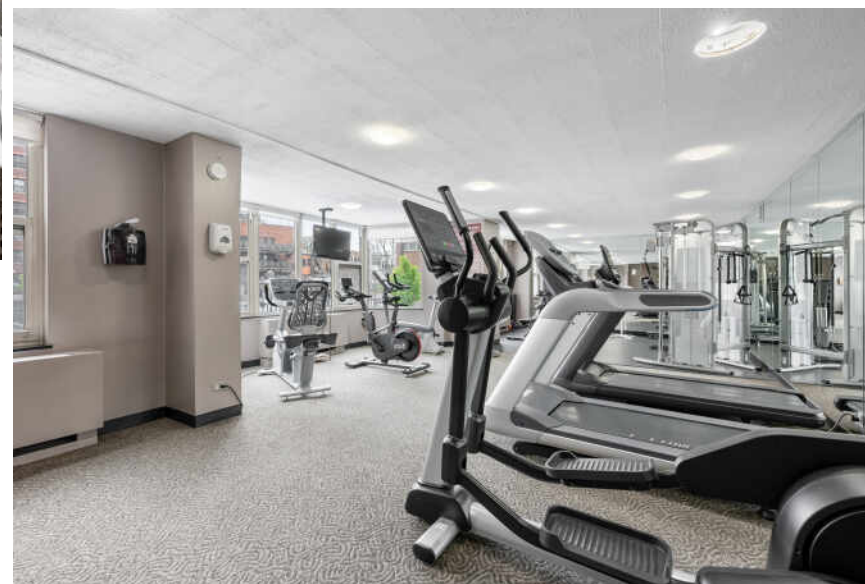
2 BEDROOM

1 BATH

TAXES: \$5,272.41

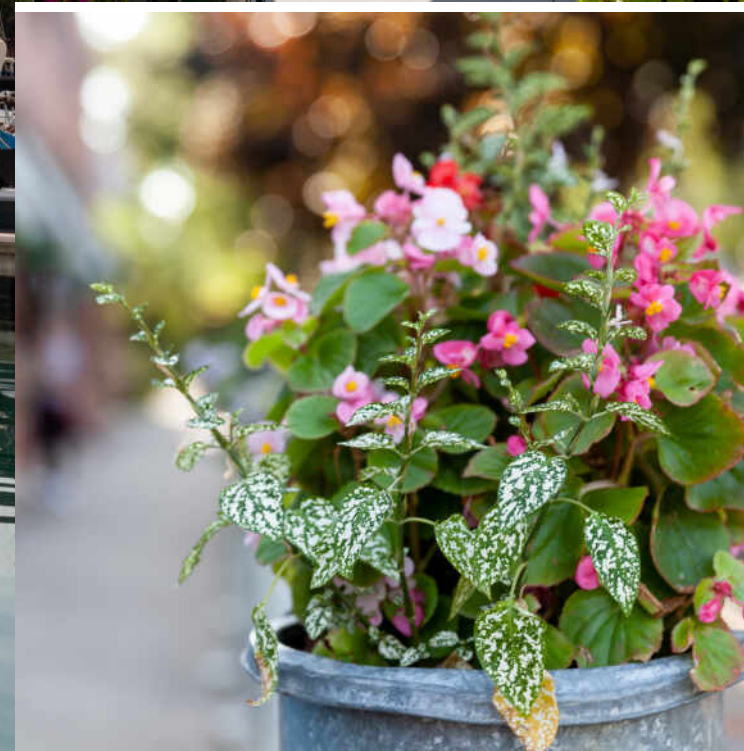
ASSESSMENTS: \$875.06





Floor Plan Created By Cubicasa App. Measurements Deemed Highly Reliable But Not Guaranteed.





CHICAGOANS WILL FIND MORE THAN A FEW OF THEIR FAVORITE THINGS IN **LAKEVIEW**, ONE OF THE LARGEST NEIGHBORHOODS ON THE CITY'S NORTH SIDE.

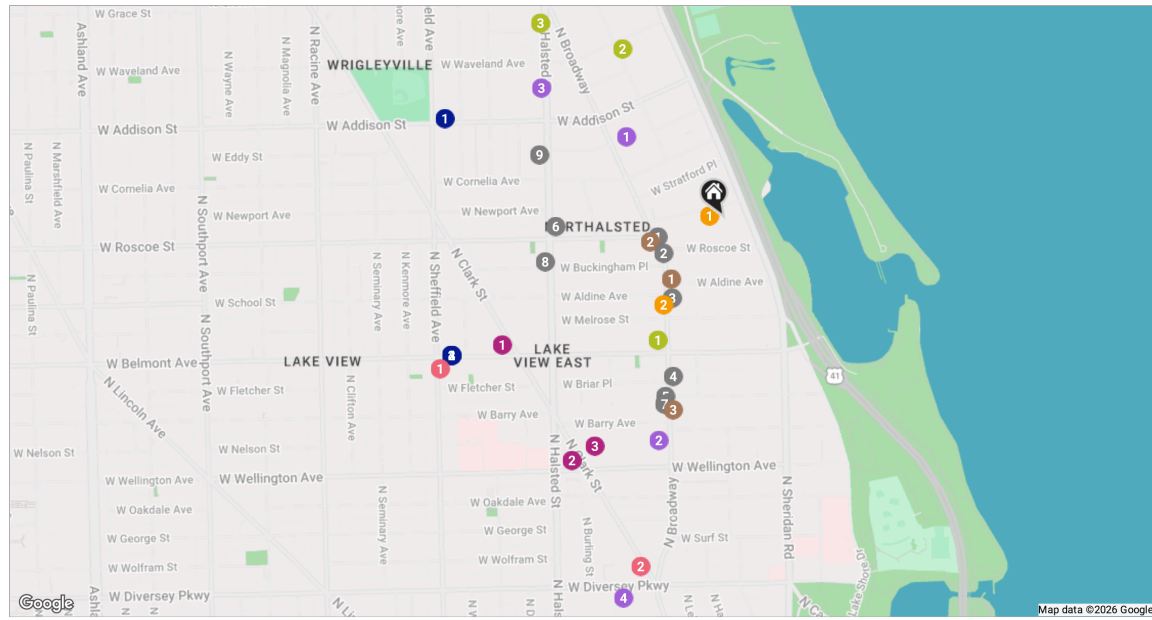
For starters, there's Lakeview's proximity to the beach and public transit, quiet residential streets, thriving restaurant and bar scene, and Wrigley Field.

Then there's the neighborhood's historic theaters and notable architecture. The Music Box Theater has been operating since it opened in 1929, originally showing silent films accompanied by a live organ player. It now plays independent and foreign films.

Did we mention the outdoor festivals, farmers markets, nightlife, and cultural attractions? Lakeview is home to the Belmont Theater District with over 30 theaters and live performance venues near the Belmont "L" station. Residents also have a front-row seat to the Chicago Marathon, Chicago Pride Parade, and Bike the Drive.

And we can't forget shopping - shops on the Southport Corridor, independent businesses on Lincoln Avenue, and unique boutiques sprinkled throughout the neighborhood.

Lakeview includes a variety of housing styles and prices. Homes run the gamut from vintage walk-ups, condominiums, new construction three-flats, loft buildings, converted courtyard buildings, and high-rises. There are also a variety of single-family homes from stately mansions near Lincoln Park to contemporary new construction throughout the neighborhood.



RESTAURANTS

- 1 Milt's Barbecue for the Perplexed
3411 NORTH BROADWAY, 0.1 MI
- 2 Esencia Urban Kitchen
3351 N BROADWAY, 0.1 MI
- 3 Joy's Noodles & Rice
3257 NORTH BROADWAY, 0.2 MI
- 4 DryHop Brewers
3155 NORTH BROADWAY, 0.4 MI
- 5 Wilde Irish Bar & Restaurant
3130 NORTH BROADWAY, 0.4 MI
- 6 The Chicago Diner
3411 NORTH HALSTED STREET, 0.4 MI
- 7 Oak and Honey
3124 N BROADWAY, 0.4 MI
- 8 Savanna Breakfast & Lunch Lakeview
3334 N HALSTED ST, 0.4 MI
- 9 Kit Kat Club
3524 NORTH HALSTED STREET, 0.4 MI

COFFEE

- 1 The Coffee & Tea Exchange
3311 NORTH BROADWAY, 0.2 MI
- 2 Starbucks Coffee Company
3358 NORTH BROADWAY, 0.2 MI
- 3 Intelligentsia Coffee
Broadway Coffeebar
3123 NORTH BROADWAY, 0.4 MI

SHOPPING

- 1 Target
3204 N CLARK ST, 0.5 MI
- 2 Binny's Beverage Depot - Lakeview
3000 NORTH CLARK STREET, 0.6 MI
- 3 Ulta Beauty
3015 NORTH CLARK STREET, 0.6 MI

GROCERY

- 1 Jewel-Osco
3531 N BROADWAY, 0.3 MI

- 2 Mariano's
3030 N BROADWAY SUITE 100, 0.5 MI

- 3 Whole Foods Market
3640 N HALSTED ST, 0.5 MI
- 4 Trader Joe's
667 W DIVERSEY PKWY, 0.8 MI

GYM

- 1 Lakeview Athletic Club
3212 NORTH BROADWAY, 0.3 MI
- 2 FFC East Lakeview
3657 NORTH PINE GROVE AVENUE, 0.4 MI
- 3 Orangetheory Fitness
3738 NORTH HALSTED STREET #2, 0.6 MI

SCHOOLS

- 1 Chicago City Day School
541 WEST HAWTHORNE PLACE, 0.0 MI
- 2 The Nettelhorst School
NETTELHORST SCHOOL, 0.2 MI

ENTERTAINMENT

- 1 The Brew & View
3145 NORTH SHEFFIELD AVENUE, 0.7 MI
- 2 Landmark's Century Centre Cinema
2828 NORTH CLARK STREET, 0.8 MI

TRANSIT

- 1 Addison
CTA - RED LINE, 0.6 MI
- 2 Belmont
CTA - BROWN LINE, 0.7 MI
- 3 Belmont
CTA - PURPLE LINE, 0.7 MI
- 4 Belmont
CTA - RED LINE, 0.7 MI

NOTES



ASHLEY BELL, ABR, RENE, MRP

312.952.0958

ASHLEYBELL@ATPROPERTIES.COM

Ashley
— **Bell**

@properties | **CHRISTIE'S**
INTERNATIONAL REAL ESTATE

All specifications, features, designs, price, assessments, taxes and materials are subject to change without notice. Depicted floor plans and architectural renderings are only an artist's impression.

