

525 W HAWTHORNE PLACE #2008
LAKEVIEW





ROOM DIMENSIONS

LIVING ROOM : 15' × 14'

DINING ROOM : 15' × 8'

KITCHEN : 10' × 12'

PRIMARY BEDROOM : 12' × 17'

SECOND BEDROOM : 9' × 12'

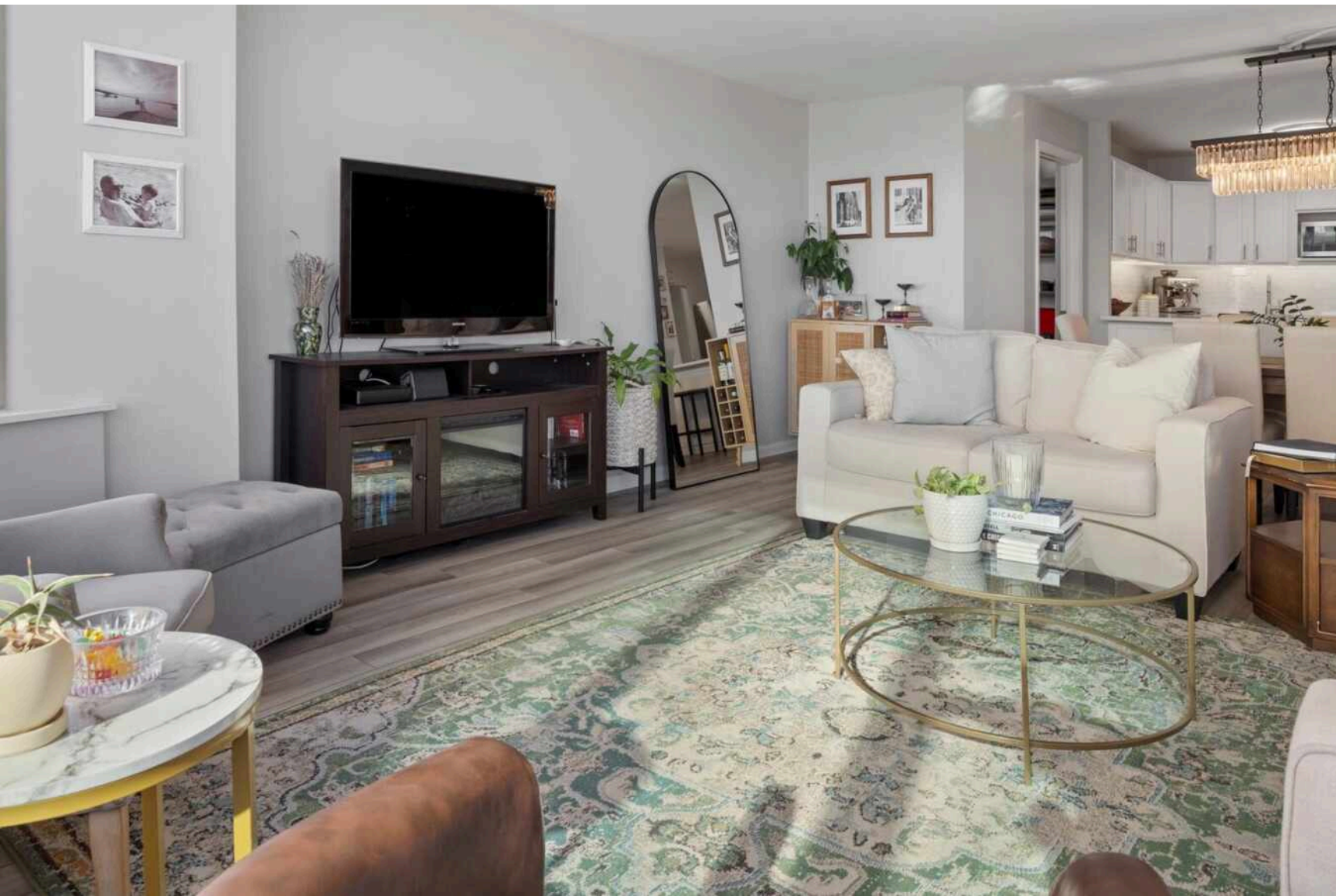
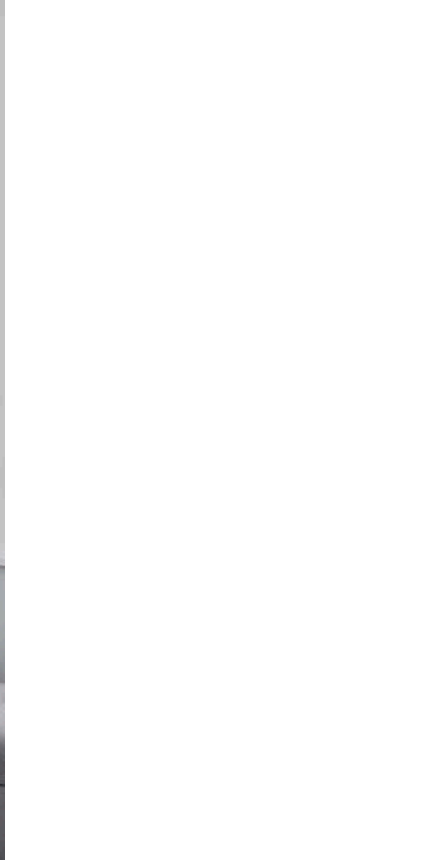
2 BEDROOM

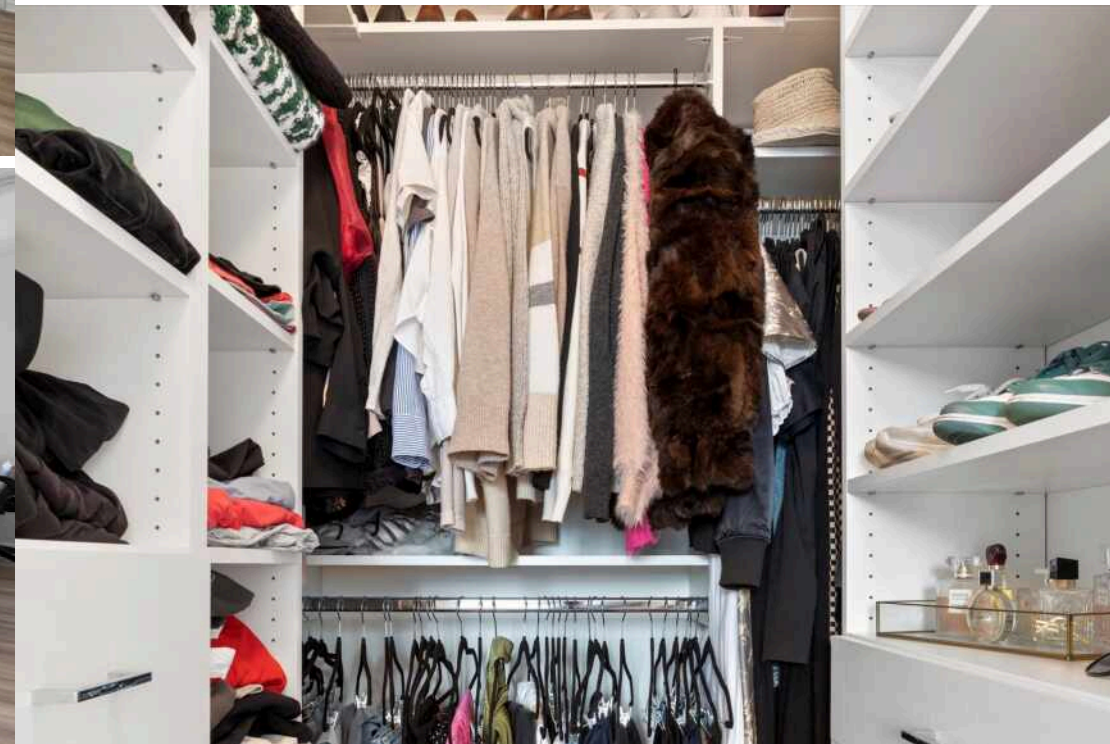
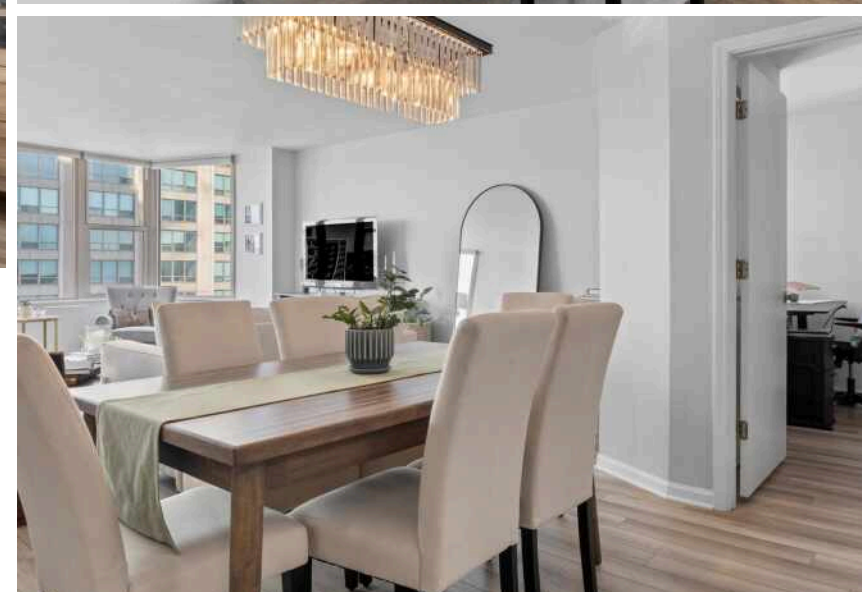
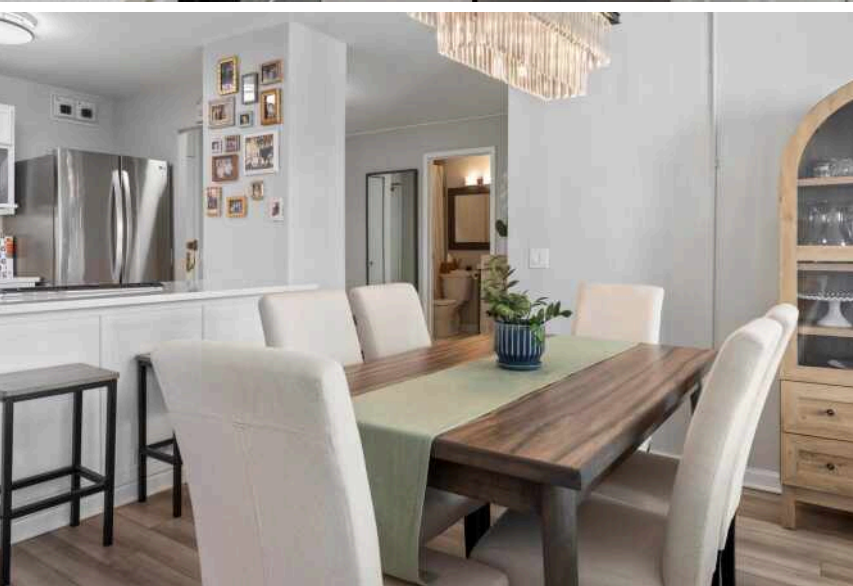
1 BATH

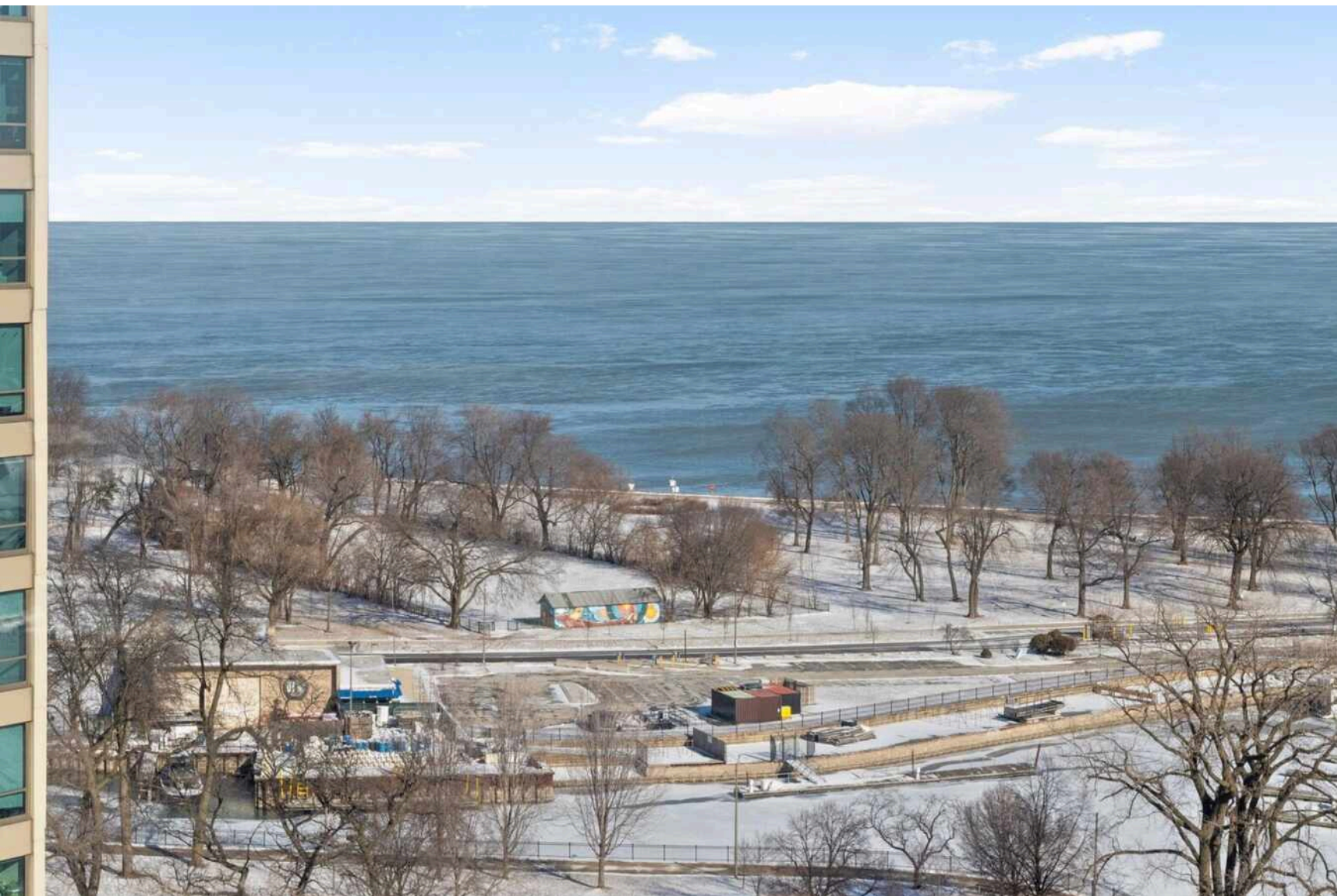
TAXES: \$4,296

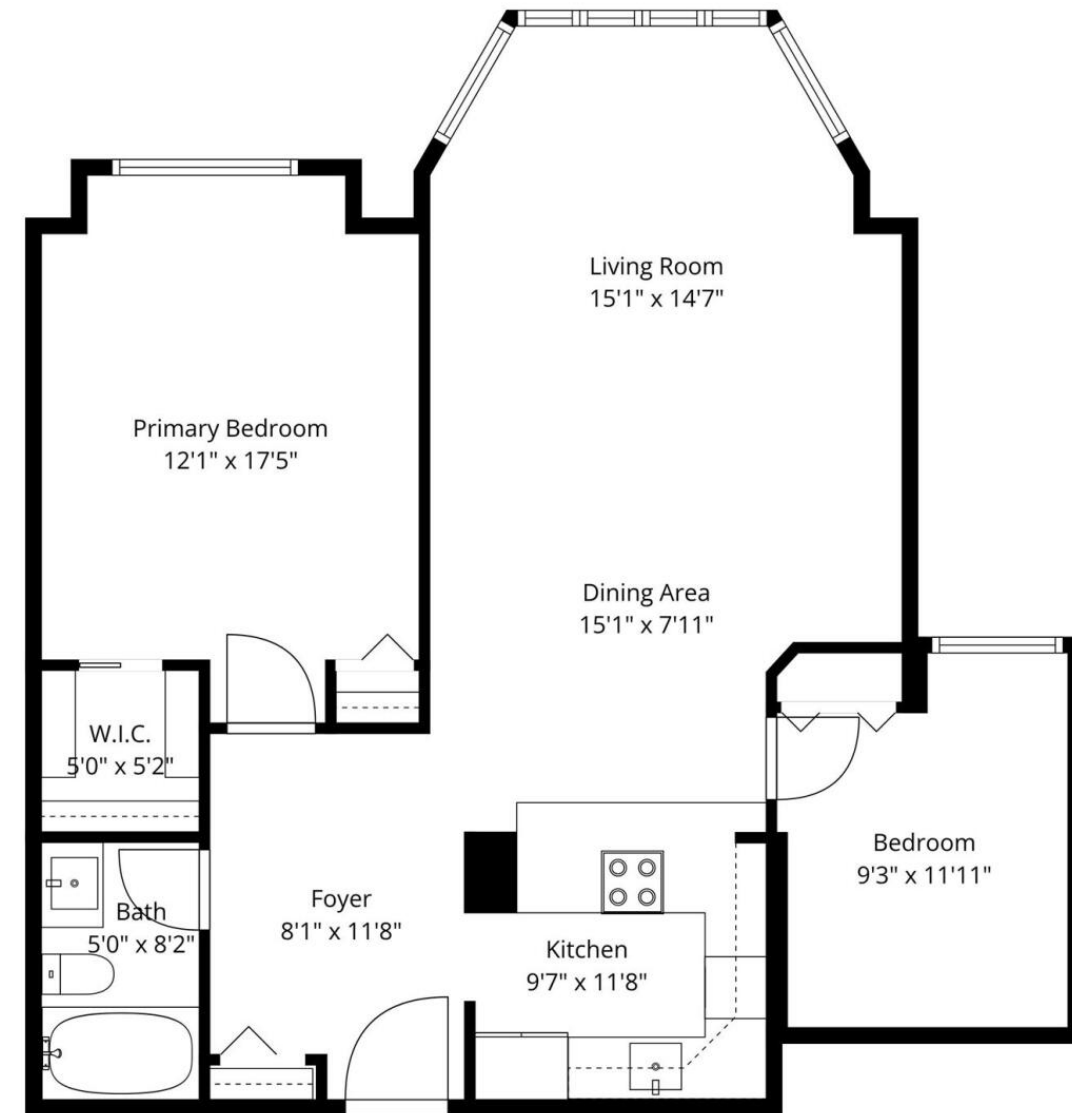
ASSESSMENTS: \$807 / MONTH

Set in the heart of East Lakeview, this beautifully designed 2-bedroom condo offers a sophisticated take on open-concept living. The updated kitchen features quartz countertops, crisp white cabinetry, LG appliances, and a sleek breakfast bar-ideal for everyday living and entertaining. A striking chandelier defines the dining area, which comfortably accommodates a table for six and flows seamlessly into the sun-filled living room with views of Lake Michigan and the city. The primary bedroom is straight out of a design catalog, fitting a king-size bed and featuring a renovated walk-in closet with custom built-ins. The second bedroom offers exceptional flexibility and is currently styled as a home office with a custom Murphy bed, perfect for hosting guests. Thoughtful upgrades, natural light, and timeless style come together in one of Lakeview's most desirable full-amenity buildings. It features 24-hour door person, outdoor pool and sundeck, fully equipped fitness center, storage, and updated laundry room. Located just steps to lakefront, dining, shopping, and easy transportation options. Parking is available in the building for purchase or lease.

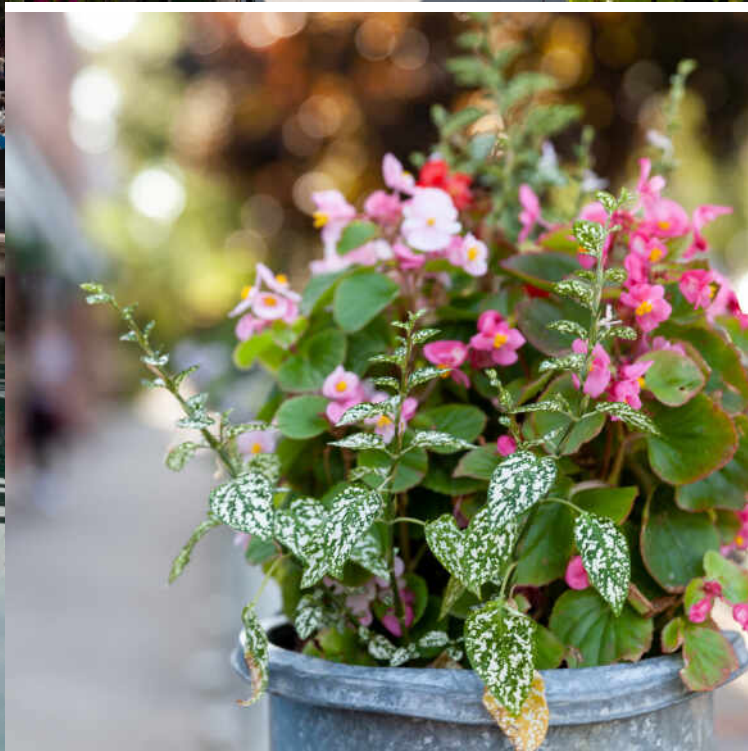








Dimensions Are Approximate. Actual May Vary.



CHICAGOANS WILL FIND MORE THAN A FEW OF THEIR FAVORITE THINGS IN **LAKEVIEW**, ONE OF THE LARGEST NEIGHBORHOODS ON THE CITY’S NORTH SIDE.

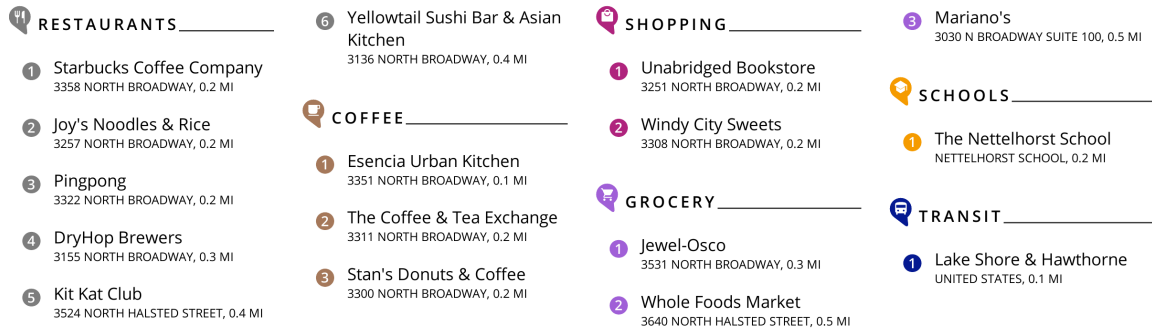
For starters, there’s Lakeview’s proximity to the beach and public transit, quiet residential streets, thriving restaurant and bar scene, and Wrigley Field.

Then there’s the neighborhood’s historic theaters and notable architecture. The Music Box Theater has been operating since it opened in 1929, originally showing silent films accompanied by a live organ player. It now plays independent and foreign films.

Did we mention the outdoor festivals, farmers markets, nightlife, and cultural attractions? Lakeview is home to the Belmont Theater District with over 30 theaters and live performance venues near the Belmont “L” station. Residents also have a front-row seat to the Chicago Marathon, Chicago Pride Parade, and Bike the Drive.

And we can’t forget shopping – shops on the Southport Corridor, independent businesses on Lincoln Avenue, and unique boutiques sprinkled throughout the neighborhood.

Lakeview includes a variety of housing styles and prices. Homes run the gamut from vintage walk-ups, condominiums, new construction three-flats, loft buildings, converted courtyard buildings, and high-rises. There are also a variety of single-family homes from stately mansions near Lincoln Park to contemporary new construction throughout the neighborhood.

[illegible]



JACKIE LUXEM

(847) 624-3307

JACKIELUXEM@ATPROPERTIES.COM

WWW.JACKIELUXEM.COM



FRANKIE DAPONTE

401-688-0383

FRANKIE@ATPROPERTIES.COM

WWW.GOLDGROUPATPROPERTIES.COM/FRANKIE-DAPONTE-CHICAGO-REALTOR/

THE
GOLD
GROUP



CHRISTIE'S
INTERNATIONAL REAL ESTATE