

528 CUMNOR COURT
DEERFIELD





ROOM DIMENSIONS

LIVING ROOM : 17' × 15'

DINING ROOM : 11' × 10'

KITCHEN : 13' × 11'

FAMILY ROOM : 16' × 15'

OFFICE : 16' × 14'

PRIMARY BEDROOM : 23' × 11'

2ND BEDROOM : 12' × 11'

3RD BEDROOM : 13' × 9'

MUD ROOM : 10' × 6'

LAUNDRY ROOM : 5' × 5'

3 BEDROOM

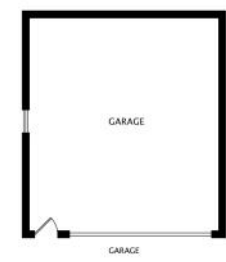
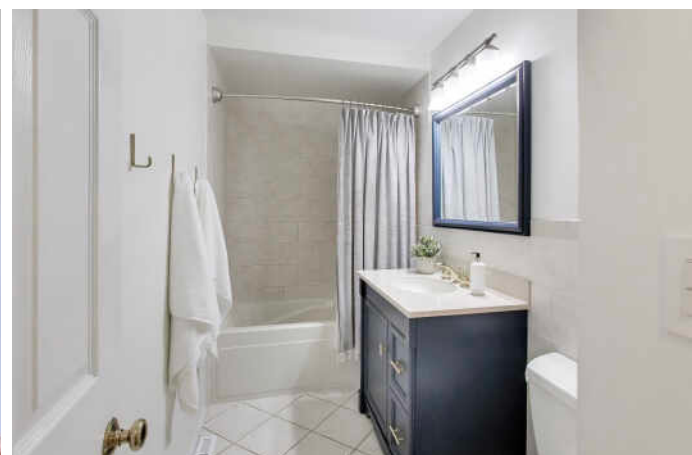
2.1 BATH

- Tucked away on a quiet street in NE Deerfield, around the corner from the coveted Walden Elementary School, this home has an easy, welcoming feel from the moment you arrive.
- Sunlight fills the house through the south-facing Living Room.
- Inviting Dining Area with built-in banquet is perfect for long dinners & homework sessions, and catching up at the end of the day.
- The stand out Kitchen is fresh, crisp and beautifully updated, with custom cabinetry, granite counters, tile backsplash, and stainless steel appliances including a Viking range.
- Generous Breakfast Bar is a favorite gathering spot and opens to the Family Room with vaulted ceilings & gas Fireplace. An awesome room for movie nights or for relaxing with a good book.
- Flexible bonus space is perfect for an Office/Gym/Playroom.
- Bedroom wing includes a Romantic Primary Suite + 2 good-sized Bedrooms and a sparkling, updated hall bathroom.
- A handy "drop zone" near the back entrance helps keep things organized.
- The deck is ready for BBQs & the firepit for summer nights.
- Play ball in the large yard, garden, or simply relax in the sun.











DEERFIELD BOASTS THE BEST OF BOTH WORLDS - THE AMENITIES AND CONVENIENCES OF CITY LIVING WITH THE CHARM OF A SMALL TOWN.

Touting a variety of housing options, Deerfield offers condominiums, townhomes, and single-family homes in a wide range of architectural styles and prices.

When it comes to amenities, Deerfield checks all the boxes. Deerfield Square includes an assortment of shops, restaurants, and boutique workout studios, while the Sachs Recreation Center offers an indoor pool, tennis courts, gymnasiums, fitness classes, and more. Another popular attraction is the Deerfield Historic Village, where residents and visitors can explore buildings dating back to the 1800s.

The community is home to Deerfield High School, which ranks among the top high schools in Illinois, according to *U.S. News and World Report*.

With two Metra stations and proximity to the Tri-State Tollway and Edens Expressway, Deerfield puts residents within easy reach of downtown Chicago, O'Hare International Airport, and numerous corporate headquarters.



PAULA JOYCE

(847) 910-7545

PAULAJOYCE@ATPROPERTIES.COM

PAULAJOYCEPROPERTIES.COM

paula joyce
RESIDENTIAL

@properties | **CHRISTIE'S**
INTERNATIONAL REAL ESTATE