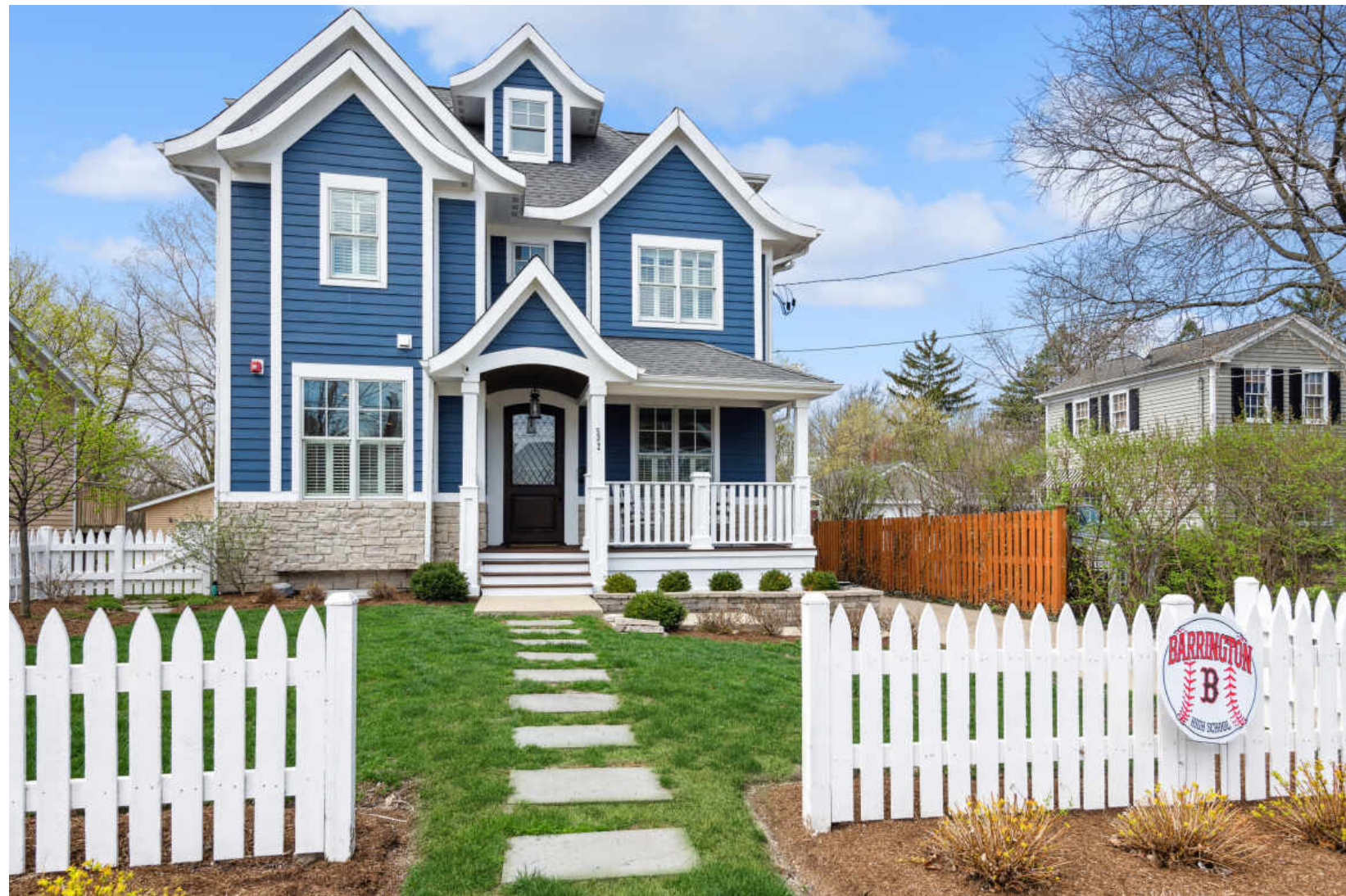




©VHT STUDIOS

532 NORTH AVENUE BARRINGTON VILLAGE



532 NORTH AVENUE • BARRINGTON VILLAGE  
532NORTHAV.INFO

@properties | CHRISTIE'S  
INTERNATIONAL REAL ESTATE

LUXURY  
PORTFOLIO  
INTERNATIONAL



JOHN MORRISON BROKER

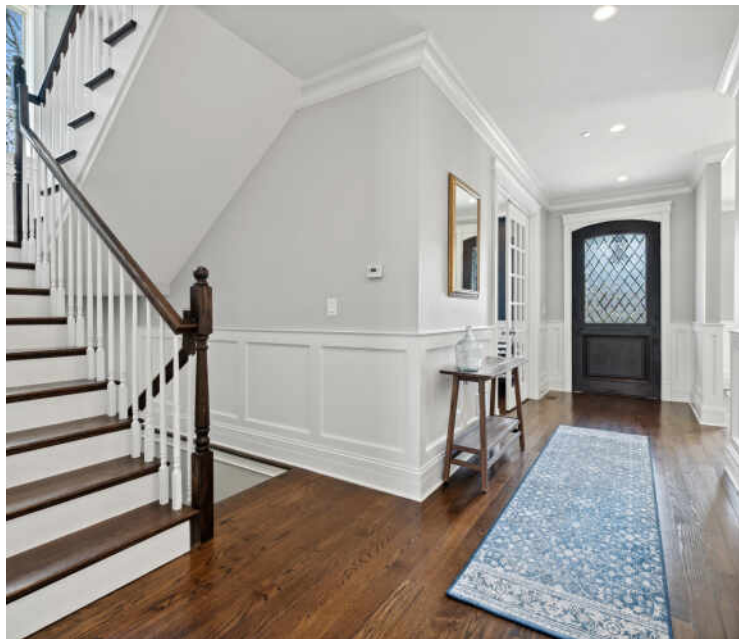
847.409.0297 mobile  
847.381.0300 office  
John@MorrisonHomeTeam.com  
www.MorrisonHomeTeam.com



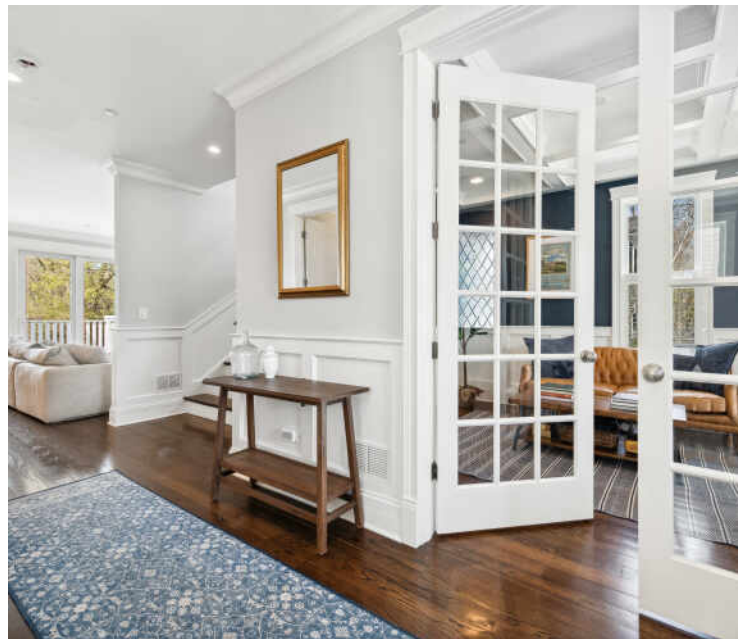


**532 NORTH AVENUE • BARRINGTON VILLAGE**  
532NORTHAV.INFO





FOYER



ENTRY / OFFICE



FRONT PORCH



## 532 NORTH AVENUE FALL IN LOVE WITH THIS STUNNING BARRINGTON VILLAGE HOME!

### FEATURES

This incredible home offers over 4,500 sq. ft. of meticulously maintained living space with 5 bedrooms, 4 full baths, and 2 half baths. Includes designer finishes, paint colors, custom plantation shutters, and fixtures throughout. Premier village location with walking distance to train, award winning schools, restaurants, and shopping. Designer white kitchen with Wolf range, SubZero fridge, farmhouse sink with Perrin & Rowe faucet, large butler's pantry, and plenty of storage. Custom designed mudroom and laundry room helps keep a large family organized. Primary bedroom includes a walk-in closet and a spa like bathroom with two separate sinks, a custom tiled shower, and a large claw foot soaking tub. Three additional bedrooms on the primary bedroom level: two bedrooms share one full bath, and the other bedroom has its own full bath. Large finished basement includes a full bedroom, full bathroom, and bonus work space or playroom. Fabulous third floor bonus room with half bath offers flexibility for your lifestyle - perfect for a game/playroom/office and gives you plenty of space to spread out. Brand new hot water tank and dishwasher. Maintenance up to date on SubZero fridge, furnaces, and air conditioning units. Culligan reverse osmosis drinking water system and softener. Rare extra deep village lot includes plenty of room for entertaining. \$50K in professional landscaping invested in the front & rear of home including a white picket fence, custom herb garden plus a \$3K professional grade basketball hoop installed over garage. Welcome Home!



**JOHN MORRISON** BROKER

847.409.0297 mobile  
847.381.0300 office

John@MorrisonHomeTeam.com  
www.MorrisonHomeTeam.com





OFFICE



DINING ROOM





VHT STUDIOS  
KITCHEN / FAMILY ROOM



© VHT STUDIOS

KITCHEN





BUTLER'S PANTRY



KITCHEN



KITCHEN



FAMILY ROOM



FAMILY ROOM





POWDER ROOM



MUD ROOM



LAUNDRY ROOM



PRIMARY BEDROOM





PRIMARY BATHROOM



2ND BEDROOM



2ND & 3RD BEDROOM JACK & JILL BATH



3RD BEDROOM

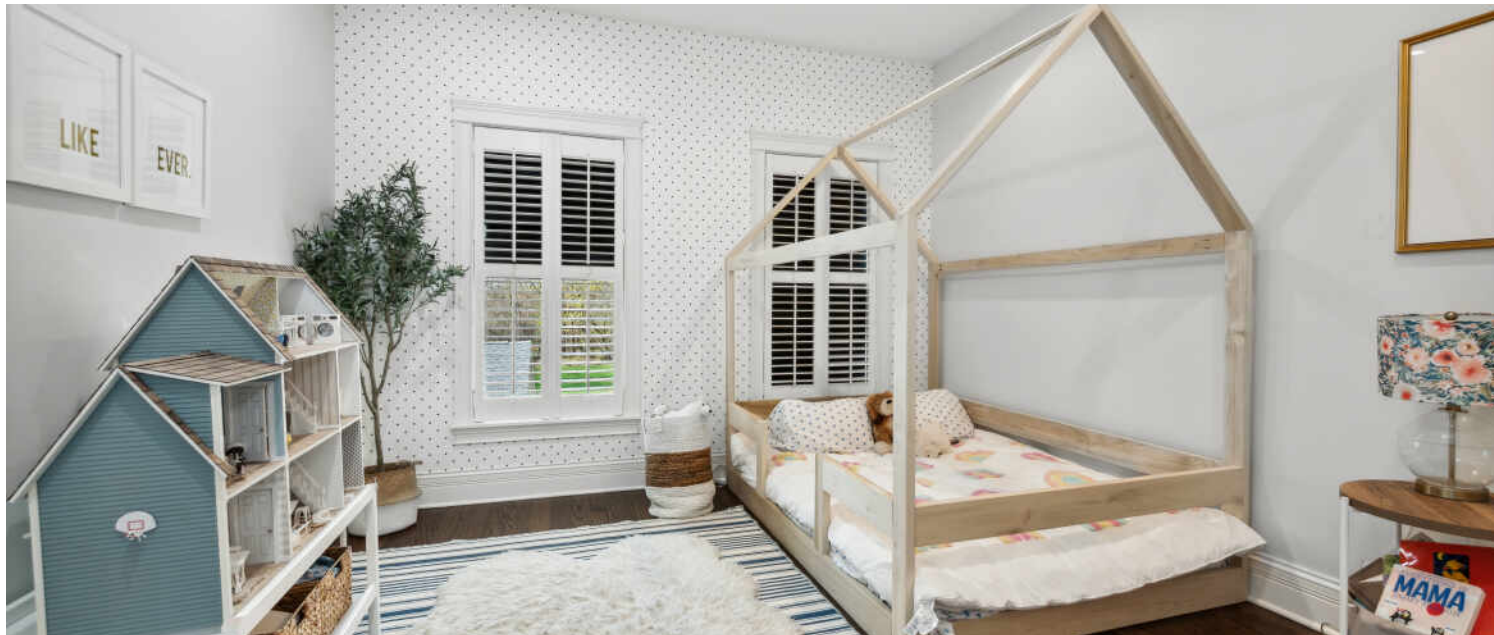




2ND FLOOR HALL BATH



2ND FLOOR HALL



4TH BEDROOM



BONUS / GAME ROOM



BONUS ROOM HALF BATH



BONUS ROOM





RECREATION ROOM



© VHT STUDIOS

RECREATION ROOM





PLAYROOM / 2ND OFFICE



LOWER LEVEL FULL BATH



5TH BEDROOM



© VHT STUDIOS

DECK





## THE VILLAGE OF **BARRINGTON** MAY HAVE THE LARGEST RESIDENTIAL HISTORIC DISTRICT IN THE STATE, BUT IT'S DEFINITELY NOT LIVING IN THE PAST

*Locals love the historic character of this thriving community and also appreciate the many amenities it has to offer, from parks and trails to restaurants and specialty shops.*

Many of the beautifully-restored Victorian, Gothic, and Queen Anne homes that line the village's main streets have been repurposed as unique shops and businesses. Meanwhile, homeowners have rehabbed and restored many historic homes back to their former glory with the addition of modern amenities. The village's historic theater opened in 1927 and still operates today.

Barrington also thrives when it comes to recreation. Citizens Park is one of the area's gems, offering wide-open spaces as well as tennis and basketball courts, cross-country ski trails, nature paths, an events pavilion, and a tree house.

The village's downtown center is filled with shoppers, diners, and residents enjoying one of the area's special events, whether it's an art festival, wine walk, or a farmers market. The nearby Barrington Metra station provides a convenient commute to downtown Chicago.

Barrington homes range from Victorians and Colonials to stunning new construction and sprawling mansions with large lots and water views.





PATIO / REAR VIEW



GARAGE / REAR YARD



SIZES AND DIMENSIONS ARE APPROXIMATE, ACTUAL MAY VARY.



