

536 MCCARTHY STREET  
LEMONT

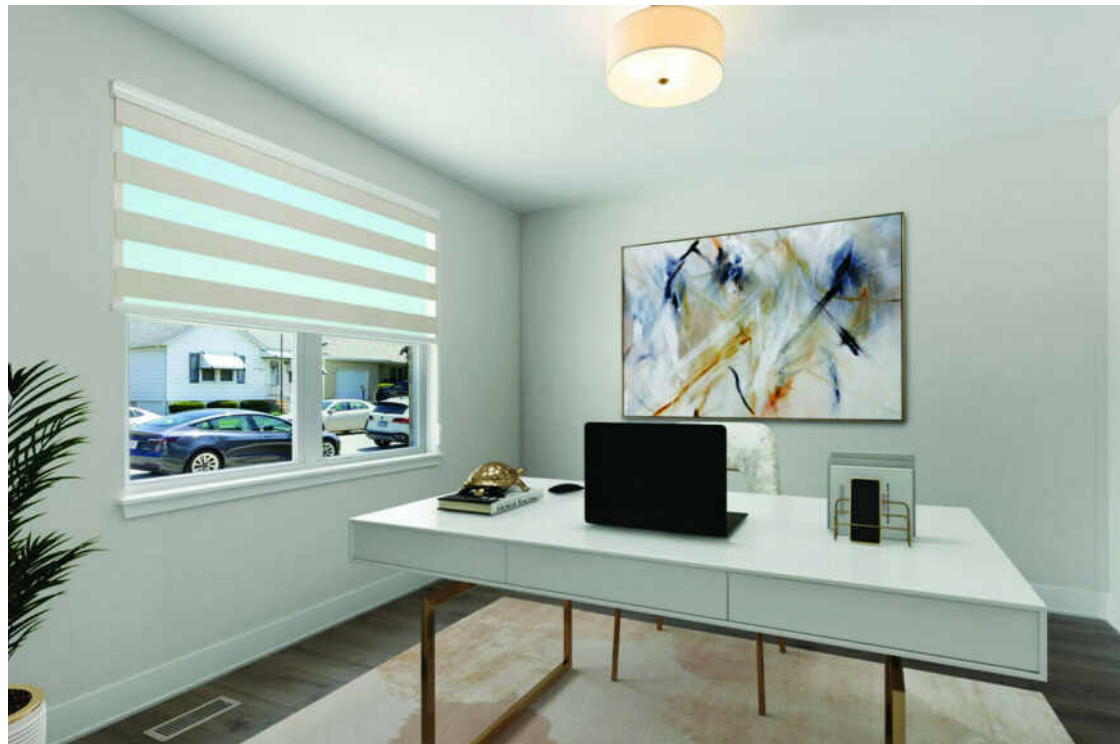


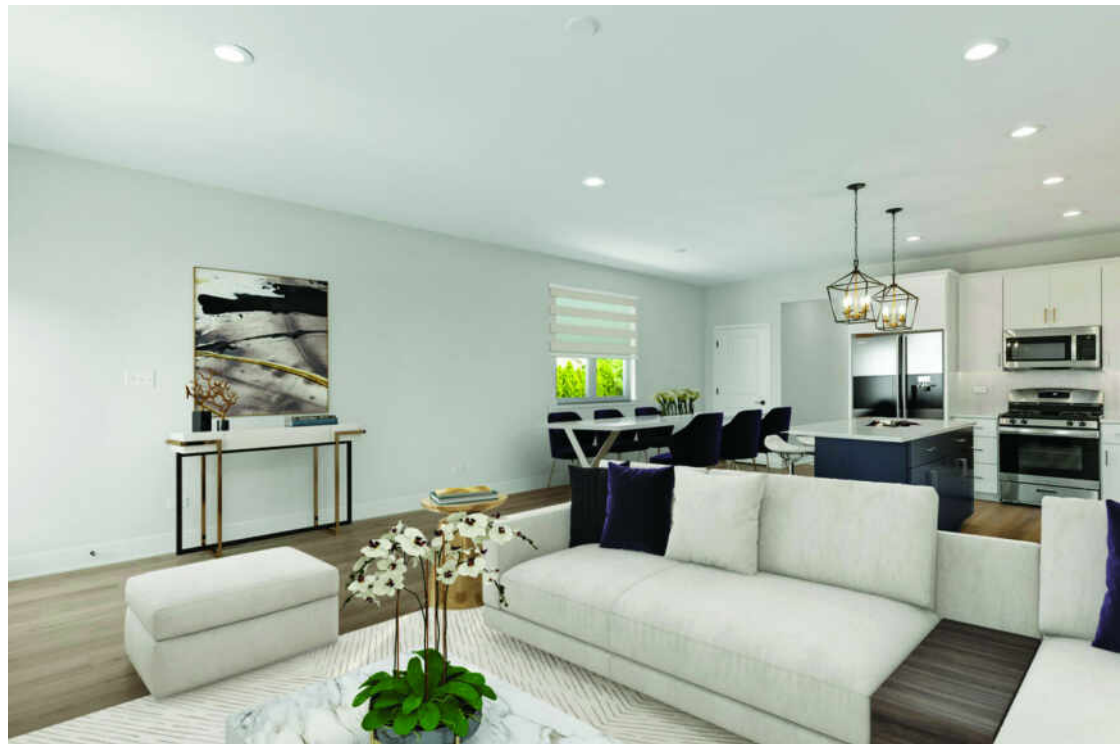


## LEMONT NEW CONSTRUCTION

This NEW CONSTRUCTION home is within walking distance to the Lemont downtown area, the Northview Park Splash Pad, and Lemont Blue Ribbon High School. You will be impressed with the house's charming, designed, open floor plan. The kitchen features custom cabinets, quartz counters, a glass-tiled backsplash, and Whirlpool appliances. Adjacent to the kitchen is the family room making this great for entertaining. The primary suite has an oversized tiled shower, a double bowl sink, and his and her closets. The main level of the house is adorned with desirable wide plank vinyl flooring. Enjoy the outdoors on the cedar deck. The full lookout elevation basement has unlimited potential. The location is also convenient to numerous golf courses and the Forge Adventure Park.











## THERE IS ALWAYS A CAUSE FOR CELEBRATION IN **LEMONT**.

Throughout the year the community hosts several seasonal events, from Heritage Fest in the summer to Lemonster Days in the fall.

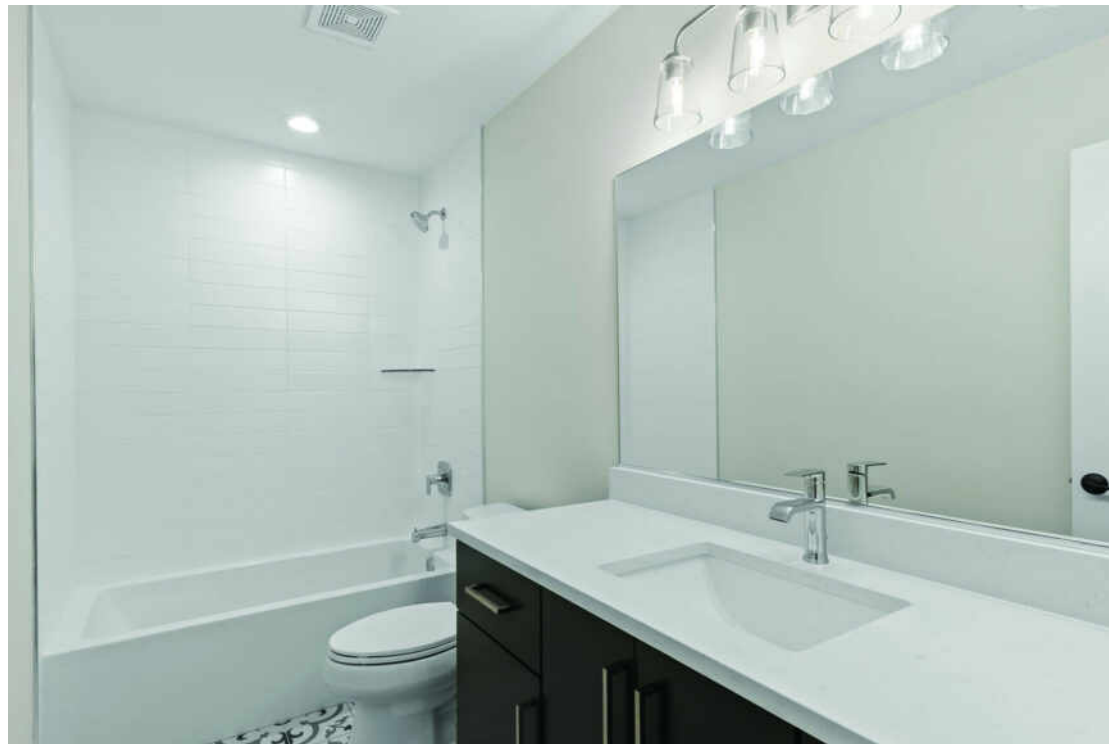
Dating back to the 1800s, Lemont has evolved into a vibrant community that overlooks the beautiful Des Plaines River. The village's topography is especially unique, offering multi-use trails along the Illinois & Michigan Canal and great hills for hiking. The Heritage Quarries Recreation Area sits on thousands of acres of forest preserves and has trails, a learning center, a nature center, and a museum. The Quarryman Challenge invites locals to a 10-mile and 5K race through the scenic town.

Lemont's 17,000 residents appreciate the community's abundance of recreational and leisure opportunities. They also enjoy its historic downtown, where they can admire the architecture and stop inside antique stores, salons, boutiques, and delicious dining options.

Most of Lemont's housing stock includes single-family homes as well as new-construction condominiums and townhomes. There is also a wonderful selection of older homes with beautiful architecture in Lemont's historic district.

Lemont is a 30-minute drive to downtown Chicago via I-55, and the suburb is served by Metra's Heritage Corridor line.





NOTES



**VALERIE MINEIKO**

(708) 243-9161

SEEVALERIE@ATPROPERTIES.COM

SEEVALERIE.COM

---

The *Elite* Team

---



CHRISTIE'S  
INTERNATIONAL REAL ESTATE