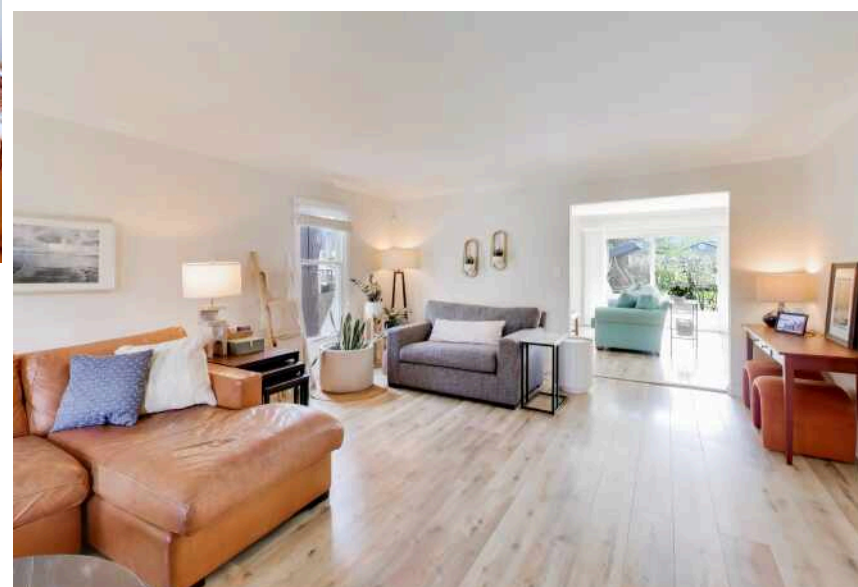


5405 SILENTBROOK LANE
ROLLING MEADOWS



@properties®

CHRISTIE'S
INTERNATIONAL REAL ESTATE



ROOM DIMENSIONS

FOYER : 13' x 12'

LIVING ROOM : 23' x 17'

DINING ROOM : 15' x 13'

FAMILY ROOM : 21' x 14'

KITCHEN : 20' x 11'

OFFICE : 10' x 9'

LAUNDRY ROOM : 10' x 7'

PRIMARY BEDROOM : 20' x 12'

WALK IN CLOSET : 6' x 5'

SECOND BEDROOM : 16' x 13'

THIRD BEDROOM : 12' x 11'

FOURTH BEDROOM : 14' x 11'

FIFTH BEDROOM : 13' x 11'

RECREATION ROOM : 21' x 16'

WORK ROOM : 16' x 13'

UTILITY ROOM : 13' x 9'

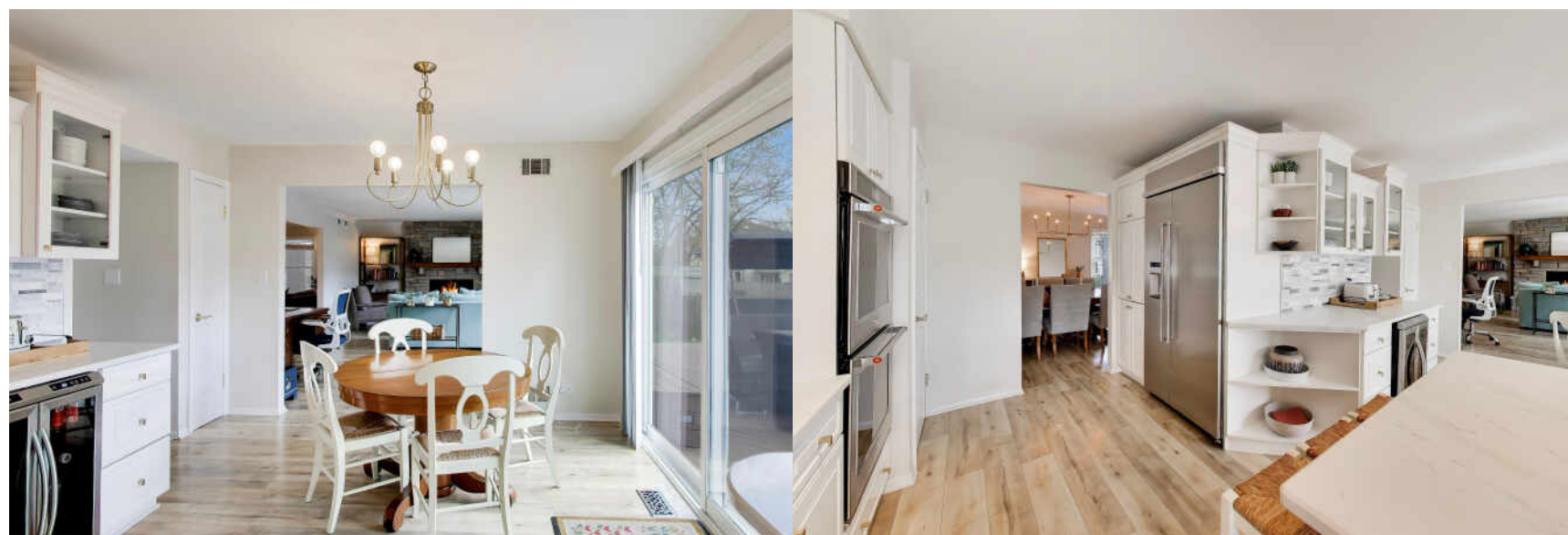
5 BEDROOM

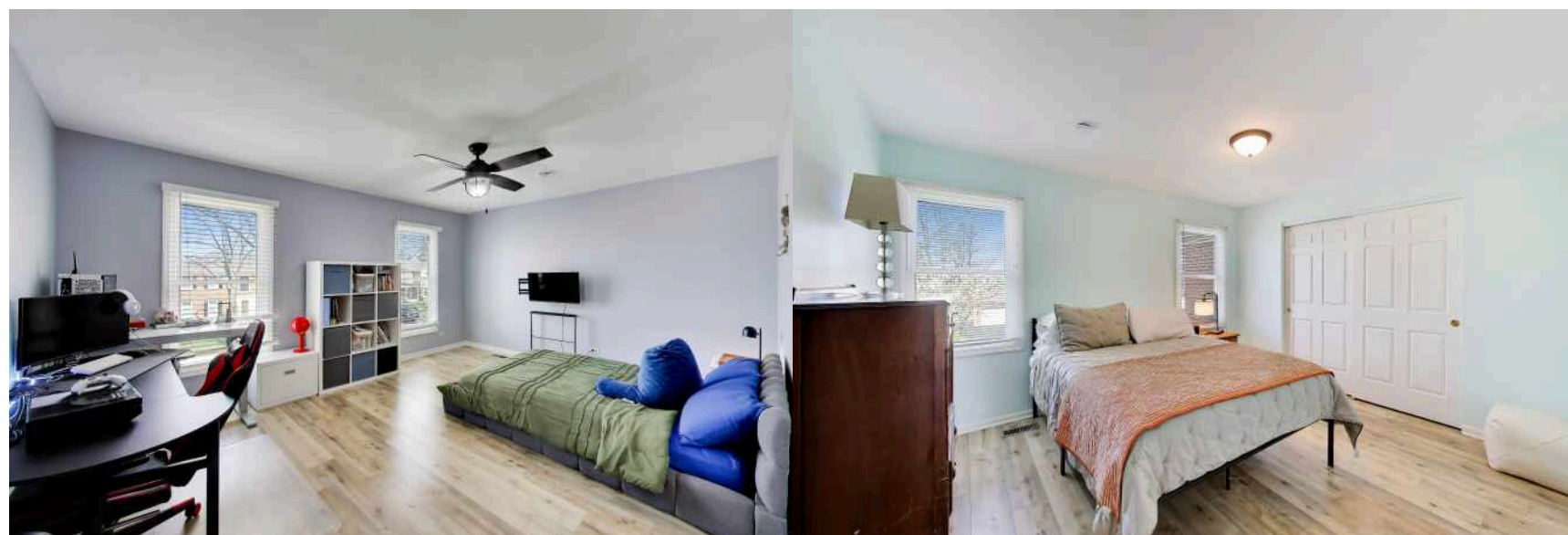
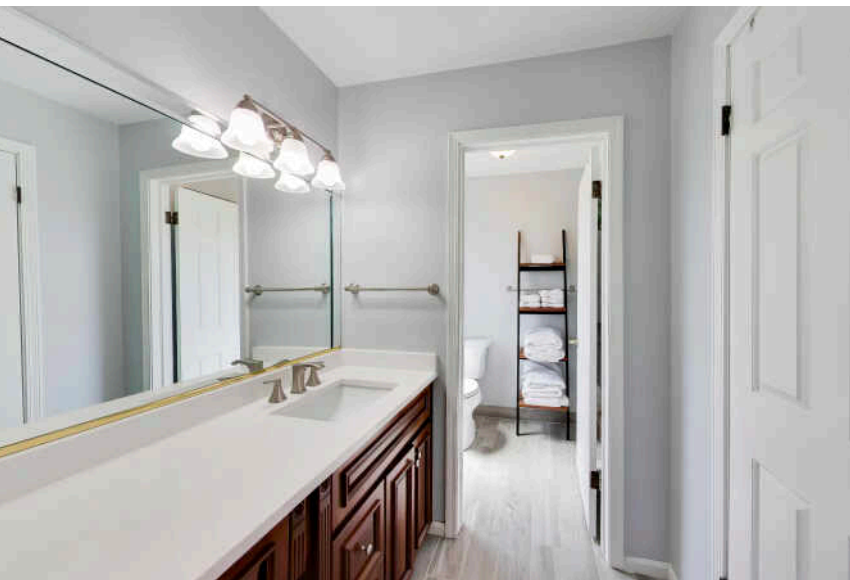
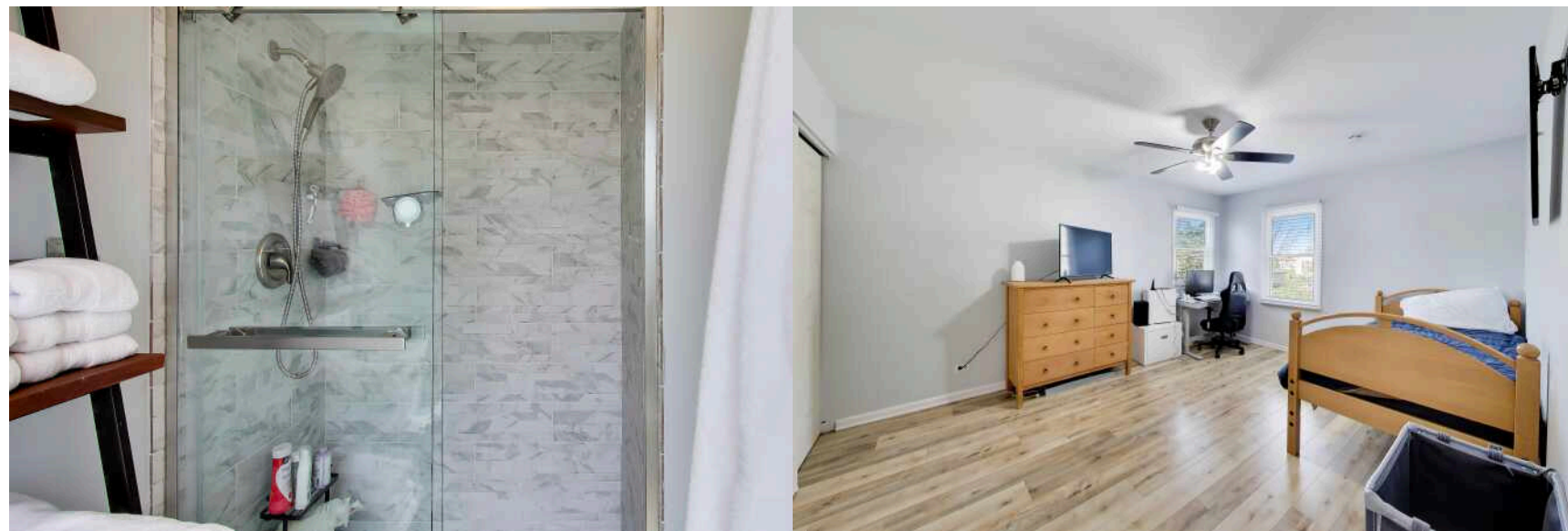
2.1 BATH

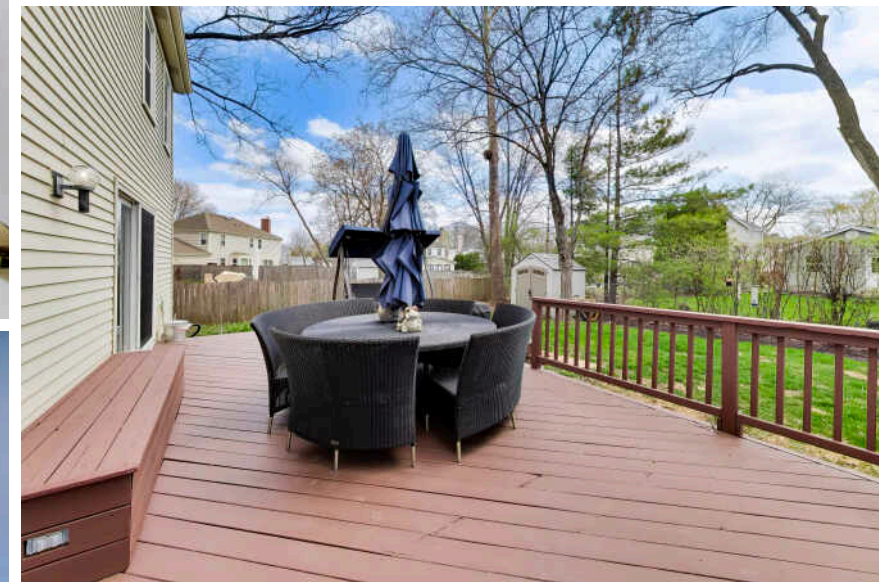
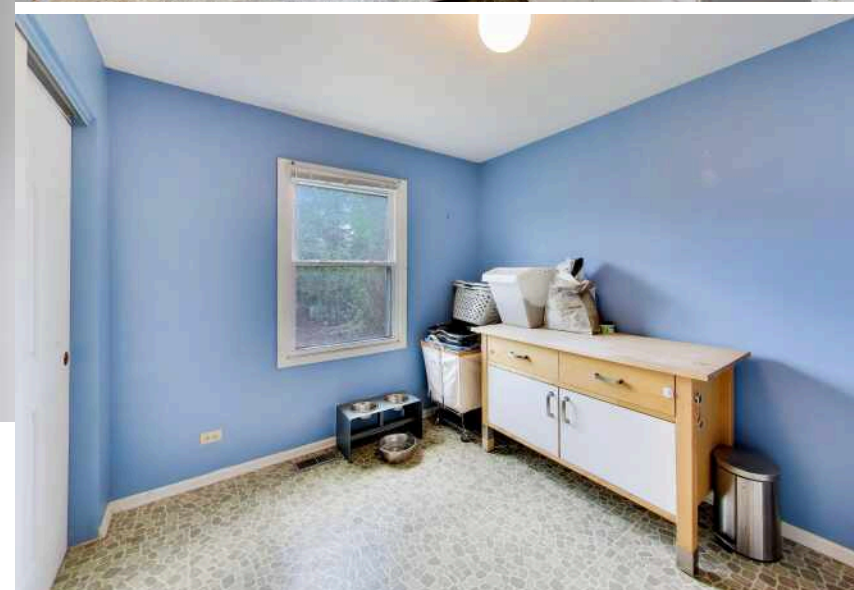
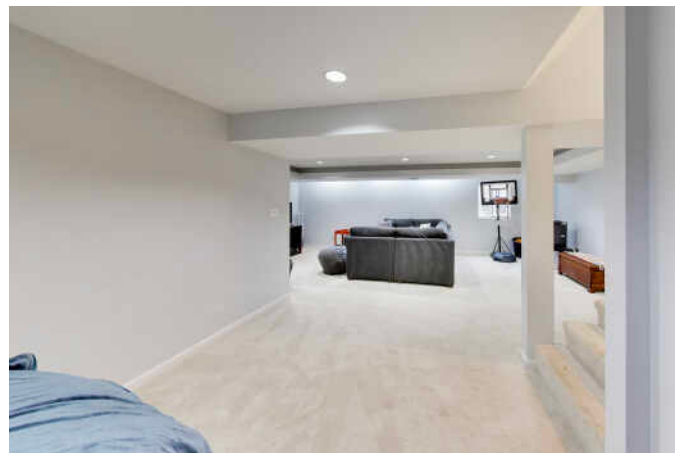
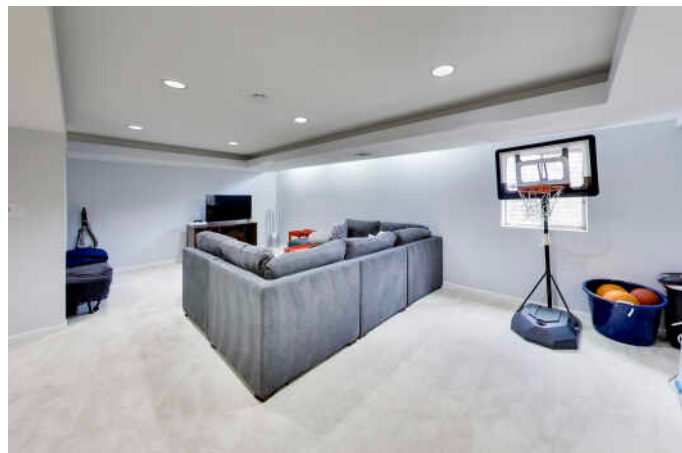
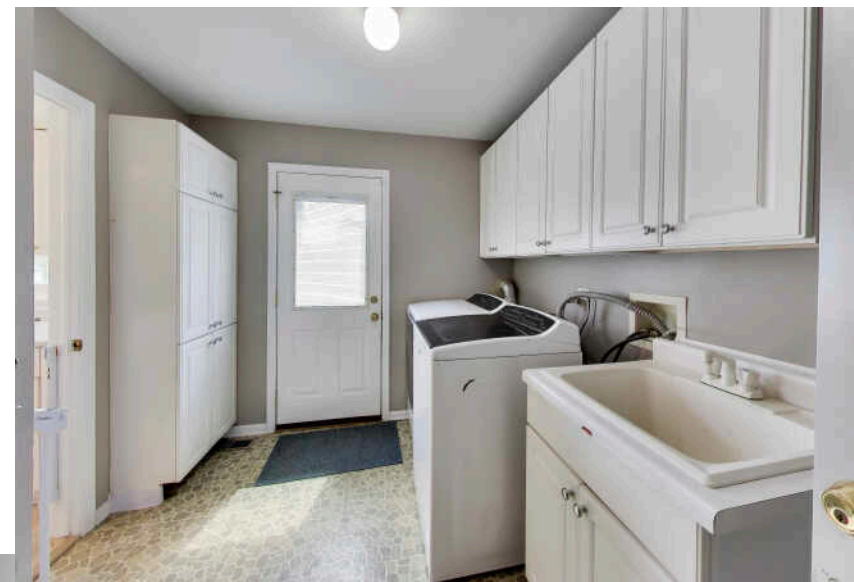
TAXES: \$14,842

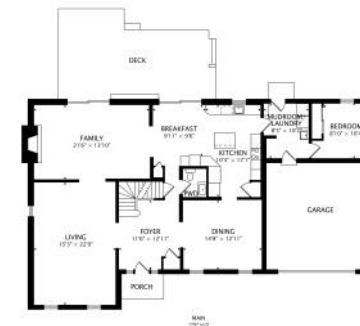
PROPERTY INFORMATION & DETAILS

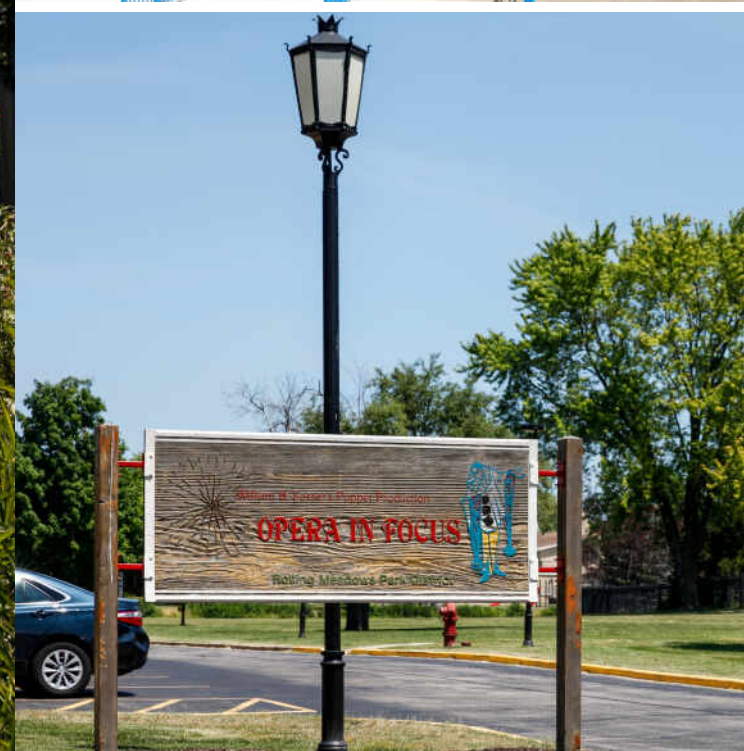
Welcome to this sidewalk community, and 5 bedroom home, perfectly situated with access to top-ranked schools. Step into the inviting foyer that warmly welcomes your guests and leads to the expansive family room, filled with abundant natural light from numerous windows. The kitchen serves as the heart of the home, boasting endless white cabinetry, granite countertops, an island with extra storage and seating, plus plenty of space for an eat-in kitchen table. Designed with an open concept, the kitchen flows seamlessly into the living room featuring a stunning stone fireplace-ideal for relaxing on cooler evenings. Host elegant dinners in the separate formal dining room, perfect for entertaining guests. The main level also includes a versatile office with a closet that can easily serve as a 6th bedroom, a spacious laundry room off the garage that doubles as an efficient drop zone, and a beautifully remodeled half bath (2025). Step outside to enjoy the fully fenced backyard complete with a private sports court (2024) for your own basketball games, along with an expansive deck perfect for summer barbecues and entertaining. The primary suite offers a peaceful retreat with a generous walk-in closet and a private bath featuring a walk-in shower. Four additional bedrooms and a full bathroom on the second level provide ample space for everyone. The finished basement adds even more livable square footage, including a recreation area and a separate finished space with a sliding barn door-ideal for a game room, home gym, or additional living area. Recent updates include luxury vinyl flooring throughout (2025), new gutters (2024), a dishwasher replacement (2024), fresh painting (2024), and an EV charger in the garage (2025). Enjoy walkable access to parks and schools, plus easy commuting with close proximity to Route 53, Harper College, Woodfield Mall, and the Metra station in downtown Palatine. This wonderful home offers a perfect blend of comfort, style, and convenience.









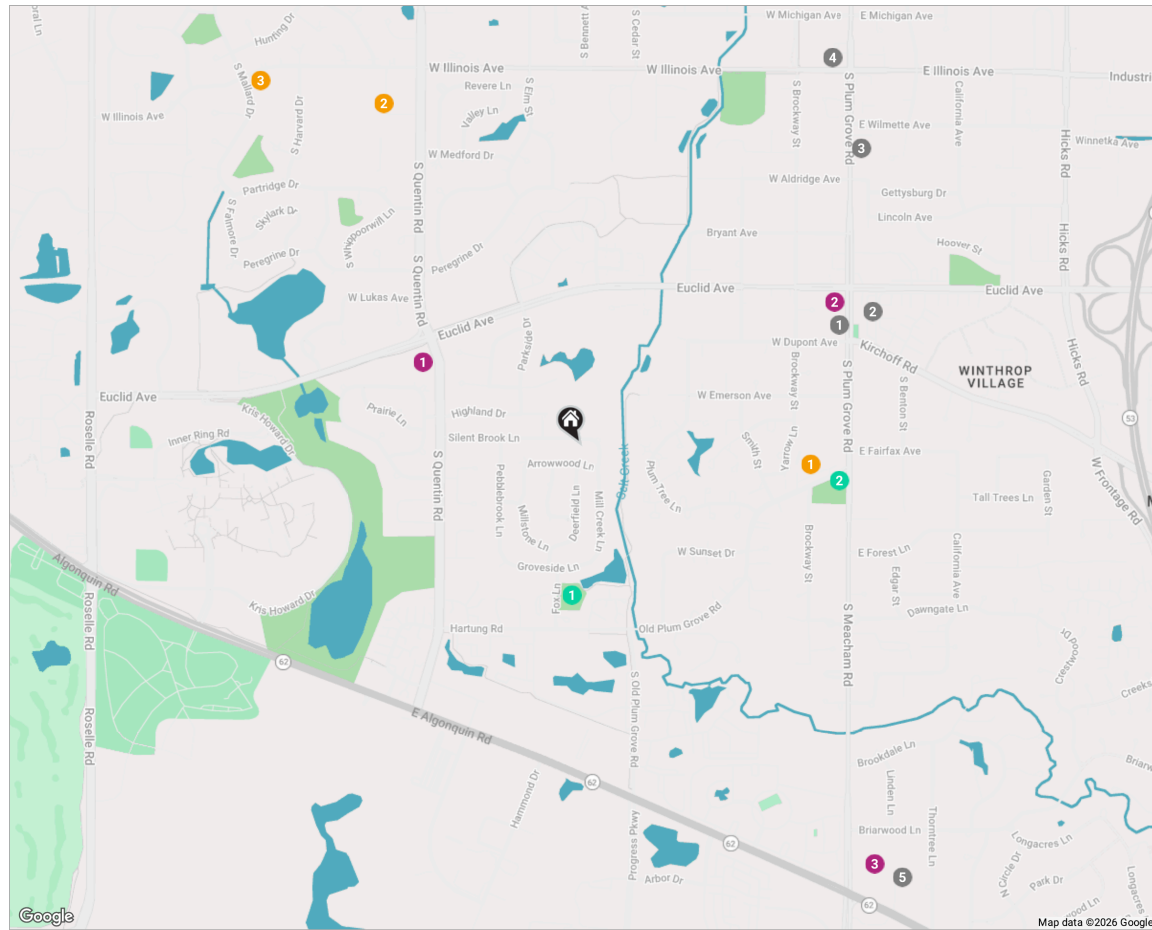


**ROLLING MEADOWS HAS BEEN DUBBED
“A GREAT PLACE TO CALL HOME” BY
LONGTIME RESIDENTS AND NEWCOMERS
ALIKE.**

Nestled in the Golden Corridor near the Woodfield Mall and Arlington International Racecourse, the city is also close to O’Hare International Airport and known for its excellent public transportation and expressway system.

Rolling Meadows has many parks and recreational areas and is home to various corporate headquarters and businesses. The community maintains a quintessentially suburban lifestyle. Throughout the year, residents enjoy parades, block parties, and various local events, including the annual Downtown Block Party, which brings community members together to celebrate the start of summer.

A growing community, Rolling Meadows continues to appeal to homebuyers by developing additional housing and renovating public spaces.



RESTAURANTS

- 1 Anna's Red Apple
2121 SOUTH PLUM GROVE ROAD,
0.7 MI
- 2 Absolutely Chinese
Restaurant
2140 SOUTH PLUM GROVE ROAD,
0.7 MI
- 3 Donkey Inn
923 SOUTH PLUM GROVE ROAD, 0.9 MI

- 4 Tre Amici Pizza
56 WEST ILLINOIS AVENUE, 1.1 MI
- 5 Chicago Prime Steakhouse
1444 EAST ALGONQUIN ROAD, 1.2 MI

SHOPPING

- 1 Walgreens
805 WEST EUCLID AVENUE, 0.4 MI
- 2 CVS
2045 SOUTH PLUM GROVE ROAD,
0.7 MI

SCHOOLS

- 1 Plum Grove Middle School
2600 SOUTH PLUM GROVE ROAD,
0.5 MI
- 2 William Fremd High School
1000 SOUTH QUENTIN ROAD ROOM
200, 0.9 MI

PARKS

- 1 Cottonwood Park
PALATINE, 0.3 MI
- 2 The Grove
4801 OLD PLUM GROVE ROAD, 0.6 MI

- 3 ALDI
1412 EAST ALGONQUIN ROAD, 1.2 MI
- 3 Hunting Ridge Elementary
School
1105 WEST ILLINOIS AVENUE, 1.1 MI

NOTES



AMY DIAMOND

847.497.0230

AMY@DEALWITHDIAMOND.COM

DEALWITHDIAMOND.COM

