

5446 S RUTHERFORD AVENUE, CHICAGO
GARFIELD RIDGE





ROOM DIMENSIONS

LIVING ROOM : 18' x 12'

DINING ROOM : 13' x 11'

KITCHEN : 13' x 13'

PRIMARY BEDROOM : 16' x 12'

SECOND BEDROOM : 12' x 12'

THIRD BEDROOM : 13' x 10'

FOURTH BEDROOM : 12' x 11'

FAMILY ROOM : 27' x 13'

REC ROOM : 24' x 16'

BAR : 11' x 7'

LAUNDRY ROOM : 11' x 11'

5446 S. RUTHERFORD AVENUE

Discover this renovated quad-level gem in the heart of Garfield Ridge. The main floor features an inviting open-concept layout with gleaming hardwood floors and elegant tray ceilings across the living and dining areas. Great natural light from front picture window. Upstairs, three spacious bedrooms and two updated baths, including a private primary suite. Don't miss the bathroom skylight, closet organizers and extra storage closet! The lower level is built for entertaining, boasting a family room with a fireplace and entertainment center, plus an additional bedroom, and a full bath. For even more space, the finished basement offers a versatile recreation room with a full bar and game area. Could also be used as a home office or gym. Newly renovated laundry room with high efficiency washer & dryer (2024). Step outside to a large, fenced-in yard featuring a two-car garage with built shelving for storage. Perfectly situated a few blocks from Byrne Elementary, steps from Archer Ave, and minutes from I-55 and Midway. Welcome home!

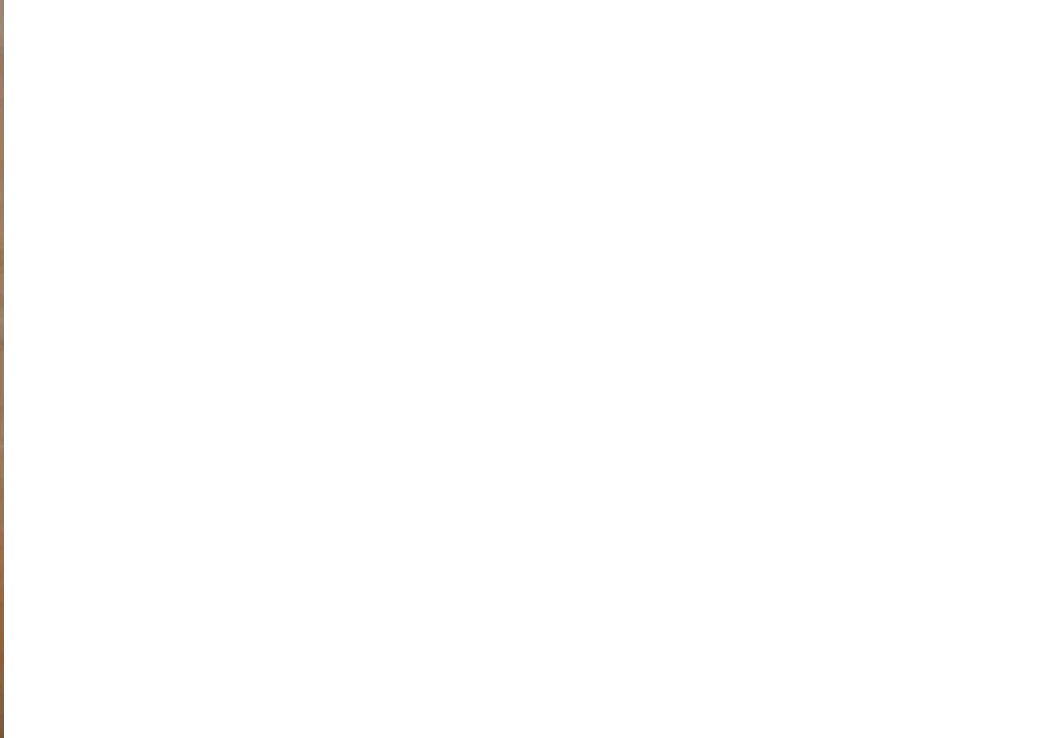
- Renovated in 2024
- Stainless Steel Appliances and large center island in open concept kitchen
- Hardwood floors and updated flooring throughout
- New entertainment area and fireplace in Family Room
- Spacious finished basement with new laundry room, rec room and bar!

4 BEDROOM

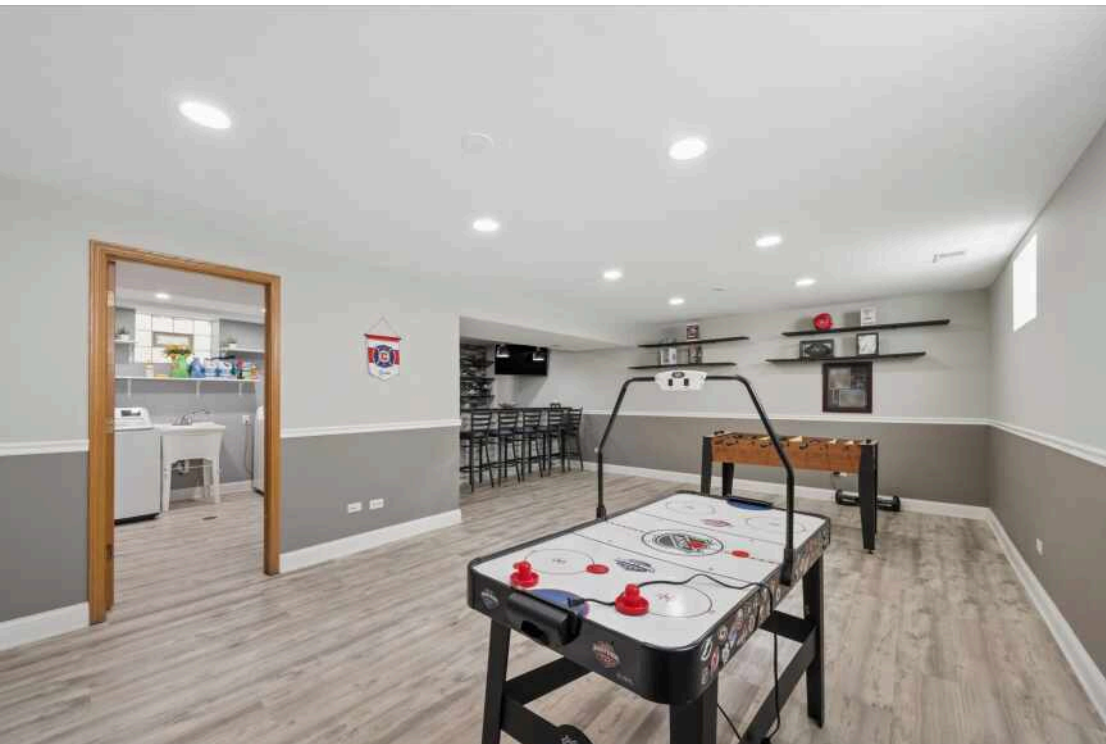
3 BATH

TAXES: \$7,835

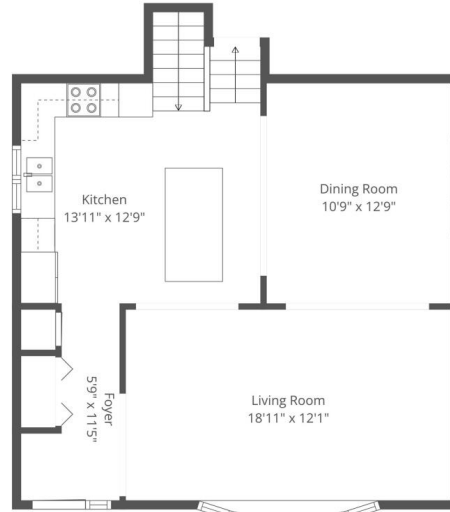






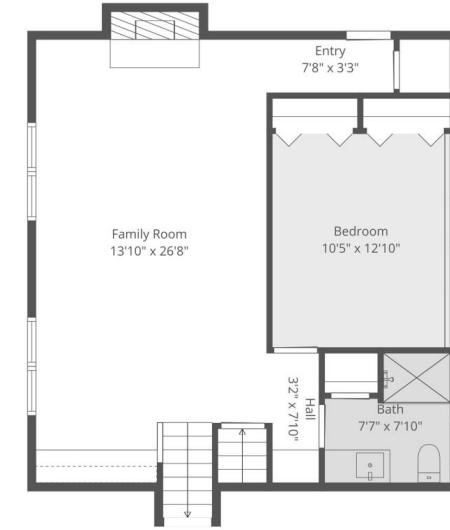






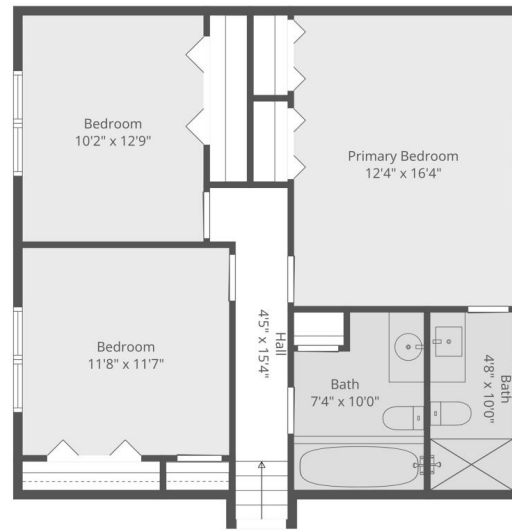
Total: 2615 sq. ft.
 Basement: 570 sq. Ft, 1st Floor: 675 sq. Ft, 2nd Floor: 630 sq. Ft, 3rd Floor: 740 sq. ft
 Excluded Areas: Undefined: 8 sq. Ft, Fireplace: 11 sq. Ft, Walls: 217 sq. ft
Measurements are highly reliable but for Marketing Only. Produced by The Collective.

THE COLLECTIVE



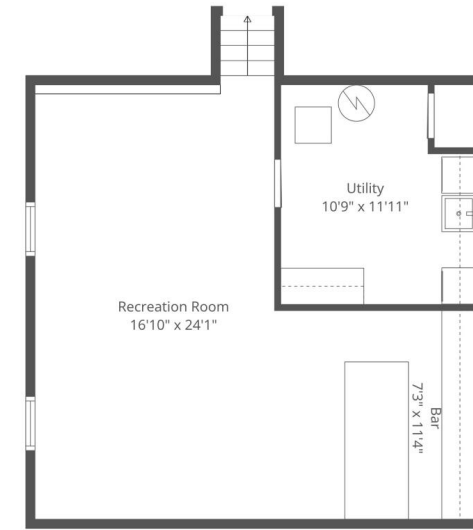
Total: 2615 sq. ft.
 Basement: 570 sq. Ft, 1st Floor: 675 sq. Ft, 2nd Floor: 630 sq. Ft, 3rd Floor: 740 sq. ft
 Excluded Areas: Undefined: 8 sq. Ft, Fireplace: 11 sq. Ft, Walls: 217 sq. ft
Measurements are highly reliable but for Marketing Only. Produced by The Collective.

THE COLLECTIVE



Total: 2615 sq. ft.
 Basement: 570 sq. Ft, 1st Floor: 675 sq. Ft, 2nd Floor: 630 sq. Ft, 3rd Floor: 740 sq. ft
 Excluded Areas: Undefined: 8 sq. Ft, Fireplace: 11 sq. Ft, Walls: 217 sq. ft
Measurements are highly reliable but for Marketing Only. Produced by The Collective.

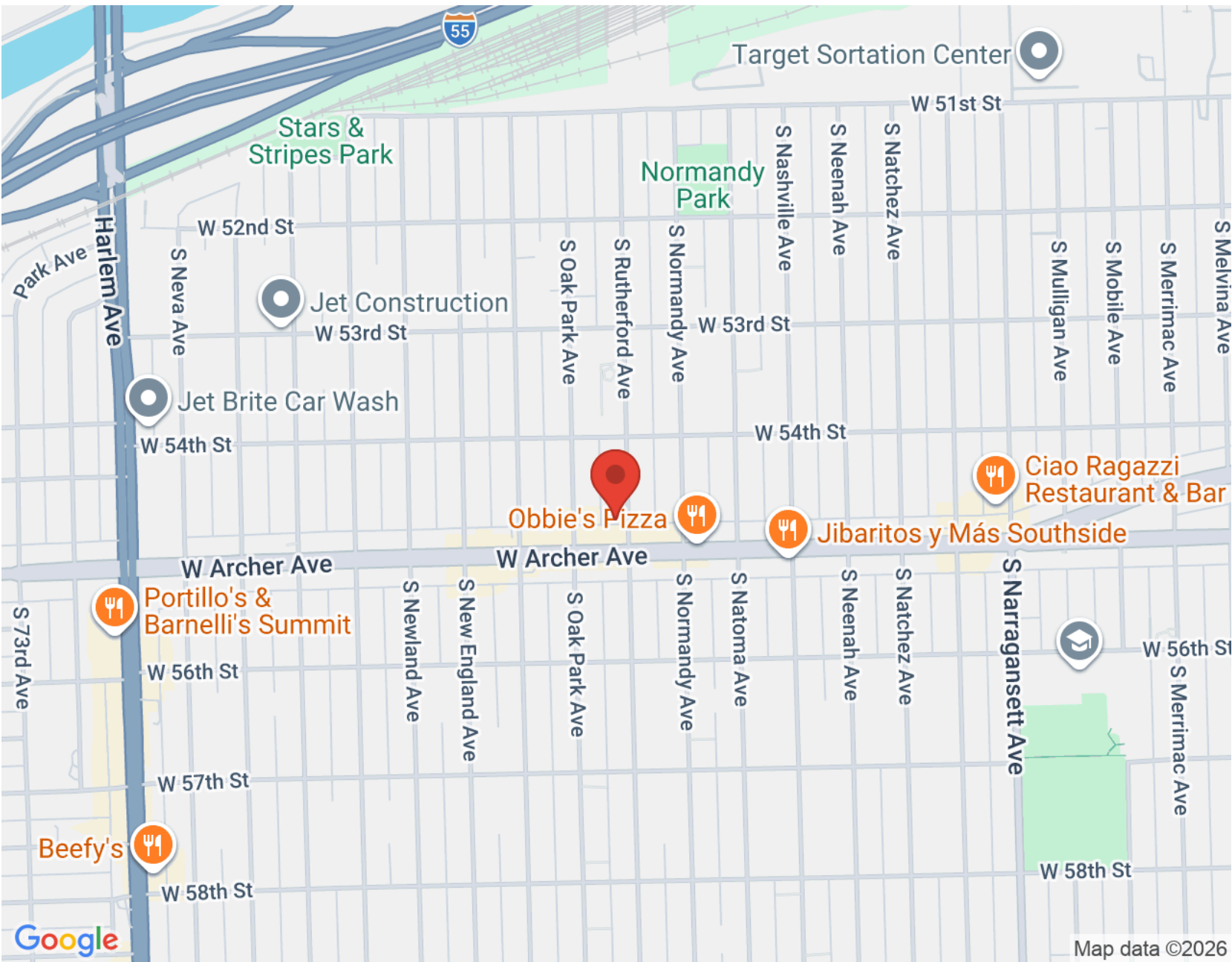
THE COLLECTIVE



Total: 2615 sq. ft.
 Basement: 570 sq. Ft, 1st Floor: 675 sq. Ft, 2nd Floor: 630 sq. Ft, 3rd Floor: 740 sq. ft
 Excluded Areas: Undefined: 8 sq. Ft, Fireplace: 11 sq. Ft, Walls: 217 sq. ft
Measurements are highly reliable but for Marketing Only. Produced by The Collective.

THE COLLECTIVE





NOTES _____



SHEILA O'MALLEY

312.330.0027

SOMALLEY@ATPROPERTIES.COM

WWW.SOMALLEYTEAM.COM



Sheila O'MALLEY
BRINGING  MUCH MORE TO BUYING & SELLING

@properties®

CHRISTIE'S
INTERNATIONAL REAL ESTATE