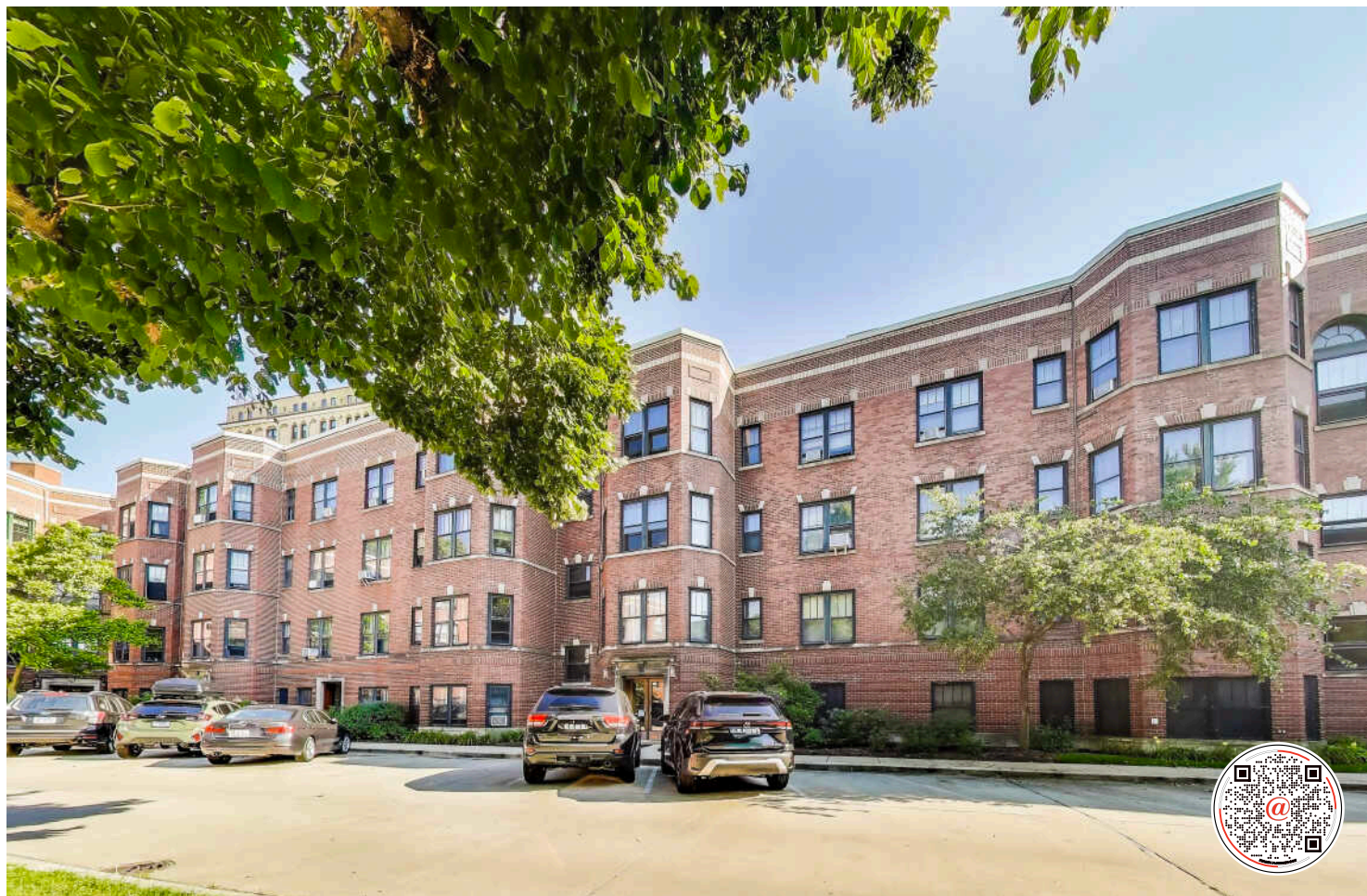


5449 S EAST VIEW PARK STREET #3

HYDE PARK





ROOM DIMENSIONS

LIVING ROOM : 19' × 13'

DINING ROOM : 18' × 13'

KITCHEN : 11' × 9'

PRIMARY BEDROOM : 17' × 11'

SECOND BEDROOM : 13' × 11'

HYDE PARK VINTAGE GEM WITH MODERN UPDATES

Set in the private East View Park community of Hyde Park, this sun-filled top floor 2 bed, 2 bath condo offers the perfect blend of vintage character with modern updates. Upon entering, you're greeted by beautiful hardwood floors, high ceilings and expansive windows with park views. The flowing layout is ideal for both everyday living and entertaining, with natural light enhancing every room. The spacious living room overlooks the community's private park. The large separate dining room features gorgeous wainscoting, leading to the kitchen which provides you the opportunity to create your dream kitchen. Bring your design ideas to make it your own. Generous primary bedroom with northeastern exposure. Both bathrooms have been recently updated, creating a fresh and stylish feel. In-unit laundry is allowed however there is laundry within the building. The location provides easy access to the lakefront, shops, restaurants, and the University of Chicago. This is a rare opportunity to own a top floor vintage gem within East View Park. One permitted parking space included.

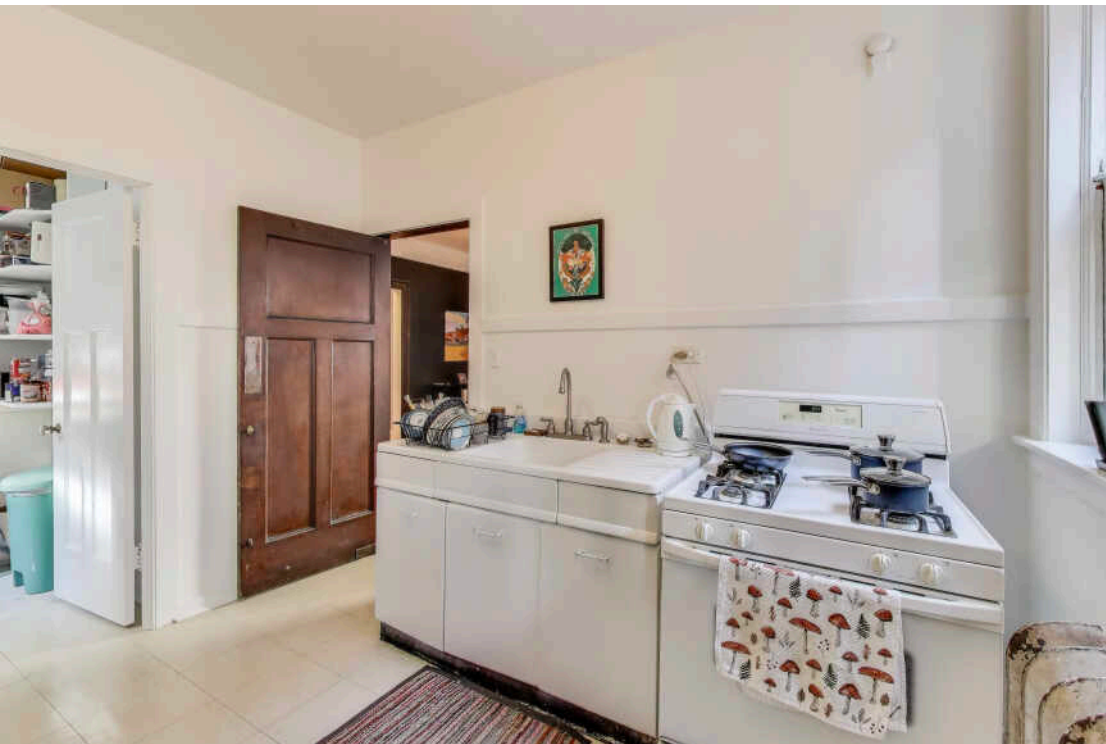
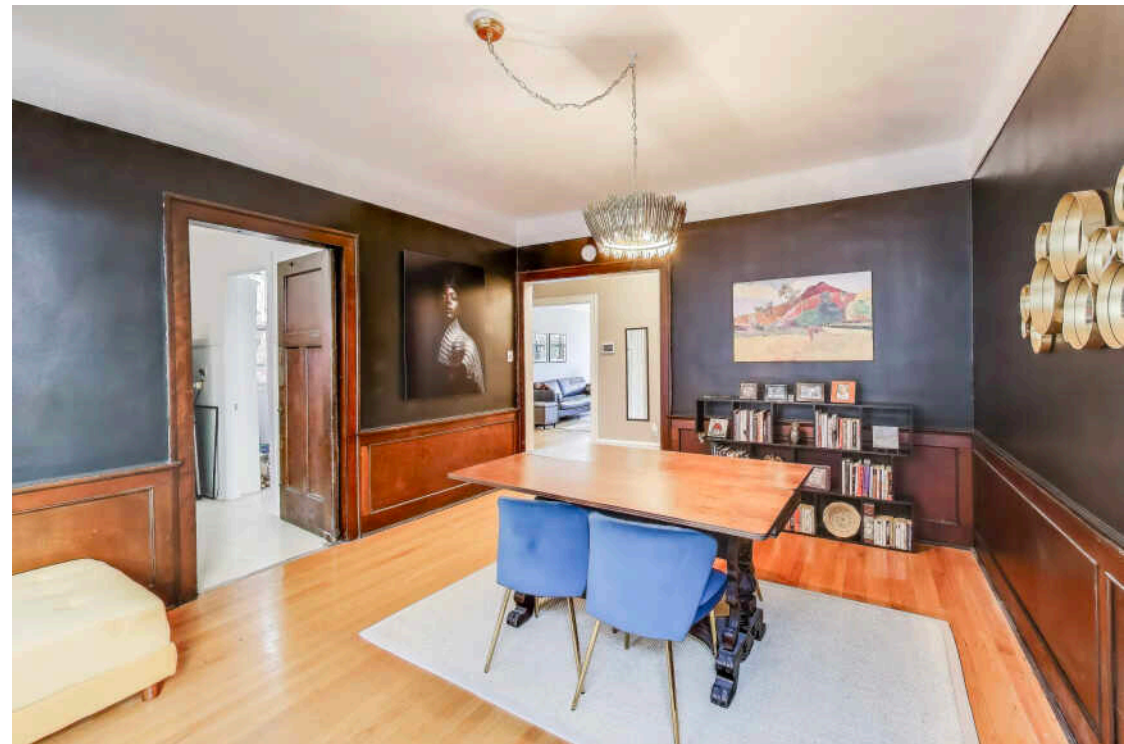


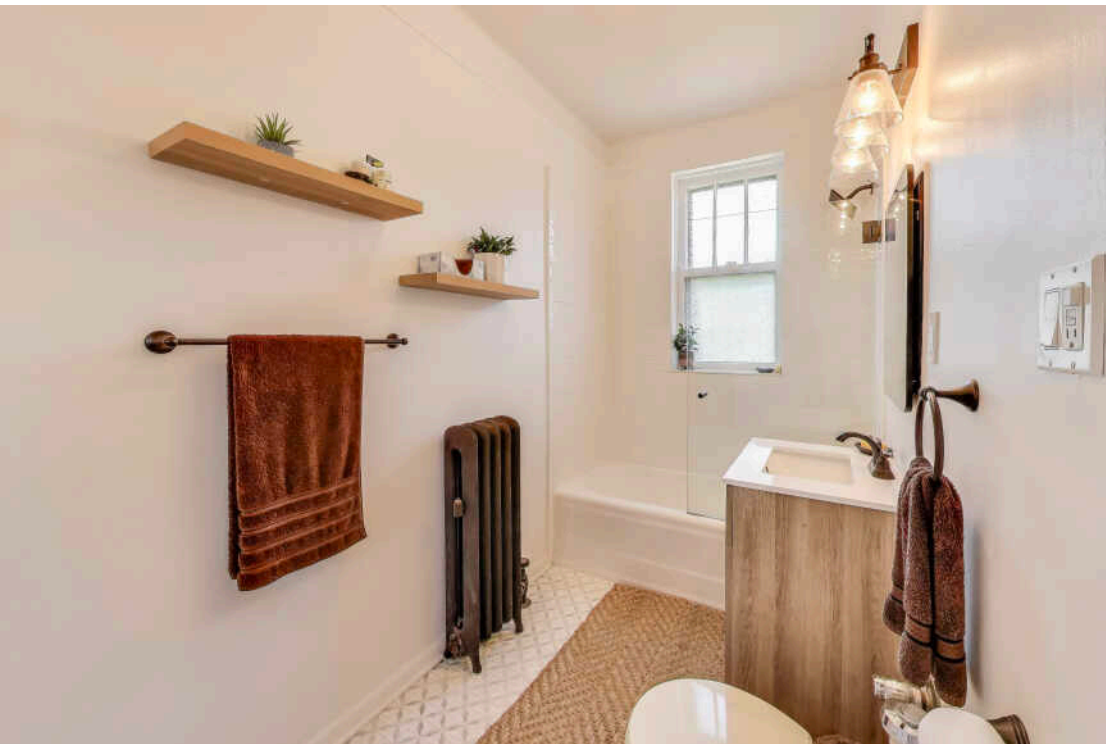
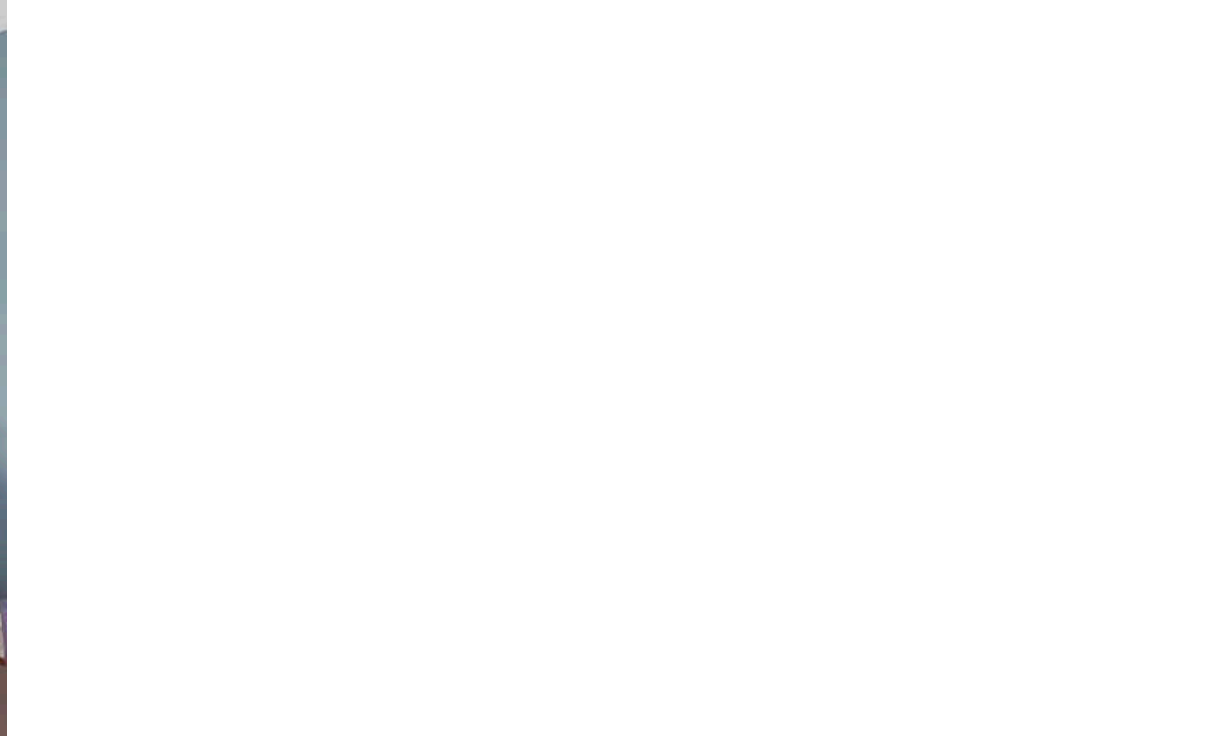
2 BEDROOM

2 BATH

TAXES: \$3,532

ASSESSMENTS: \$613 / MONTH







BETWEEN ENRICHING ART EXHIBITS AND MUSEUMS, A WORLD-RENOWNED UNIVERSITY, AND WELL-KEPT COMMUNITY GREEN SPACES, **HYDE PARK** HAS A LOT TO OFFER.

The lakefront neighborhood is home to the University of Chicago, which has one undergraduate college and five graduate research divisions. The university is the site of the Smart Museum of Art and the Oriental Institute, which draw visitors along with other cultural gems in the area including the Museum of Science and Industry and the DuSable Museum of African American History.

Green Space is another important characteristic of Hyde Park. Offering one of the best views of the Chicago skyline, the neighborhood has access to Promontory Point (aka The Point) – a man-made peninsula on Lake Michigan that connects to the Lakefront Path. There's also Jackson Park, where residents can relax, watch sailboats, and play golf and tennis.

Hyde Park boasts pre-war high-rises, modern apartment buildings designed by renowned architect Jeanne Gang, and architecturally significant properties such as Frank Lloyd Wright's Robie House. The neighborhood also offers new construction condominiums, lofts, townhomes, and single-family homes.



This image shows a blank sheet of white paper with horizontal ruling lines. The lines are evenly spaced and run across the width of the page. There are no margins, text, or other markings on the paper.



MARGARET WILLIAMS HILL

(312) 508-3033

(312) 682-8500

MW@ATPROPERTIES.COM

