

5500 W ARDMORE AVENUE
SOUTH EDGEBROOK / JEFFERSON PARK

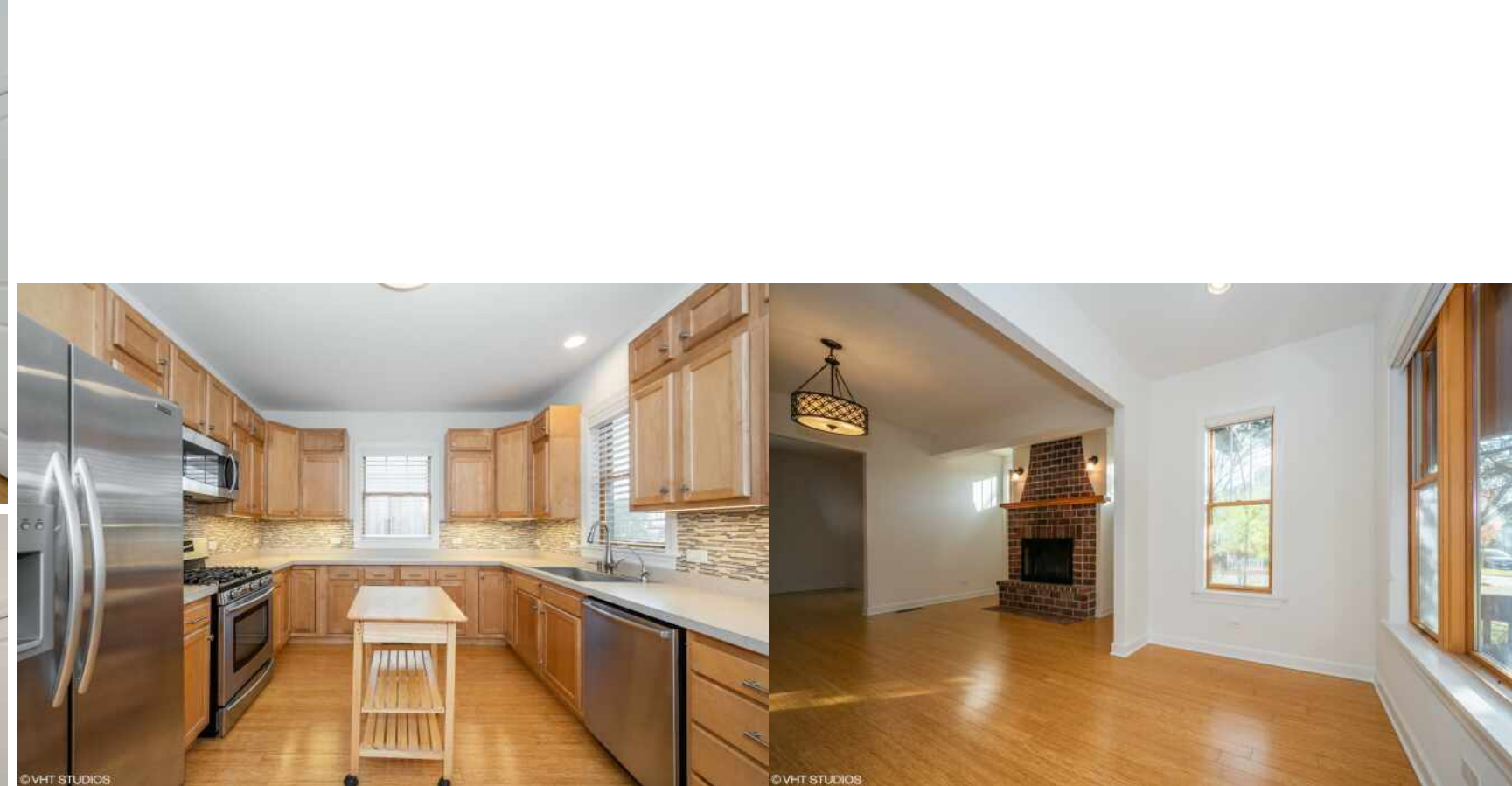


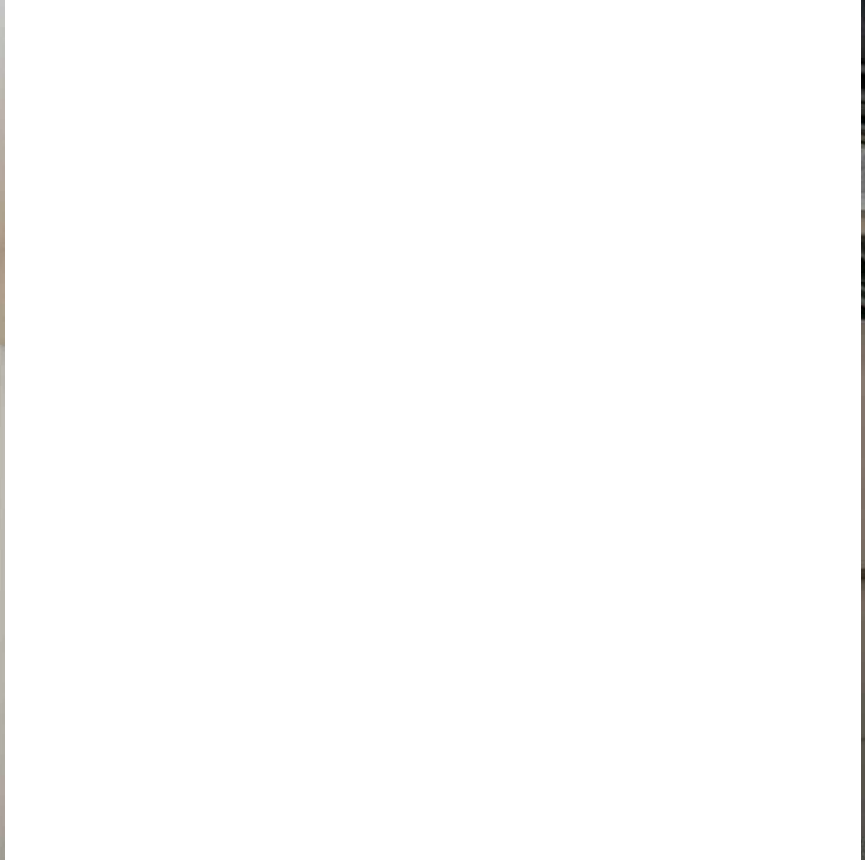


©VHT STUDIOS

3 BEDROOM
1.1 BATH
TAXES: \$7,848

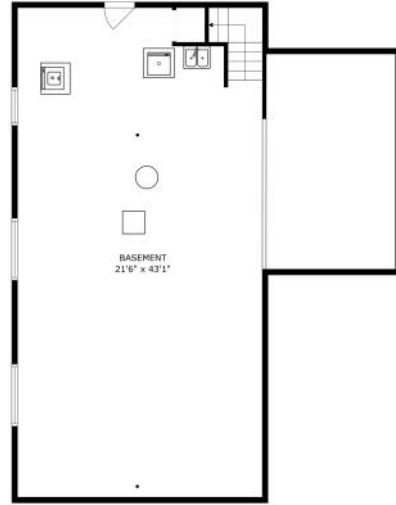
Great home on EXTRA LARGE corner lot in beautiful SOUTH EDGEBROOK location. Living room has a wood burning fireplace. Updated kitchen with maple cabinets. Large Sunroom surrounded by large windows facing the serene, wooded private back yard. 1st floor laundry room as well as laundry in the basement. Pull-Down staircase leads to the large and open attic with windows for great natural lighting. Finish the attic for additional square footage. Semi finished basement is open and clean with lots of windows for natural lighting and exterior access! Easily make this the family room for additional living space, with definite possibility to add a bathroom. Front porch has sitting space. Additional exterior storage under the sunroom for yard equipment etc. 2 car garage with car apron. Large front porch. Mature landscaping surrounds this property. This home was the 1st one built on this lovely block! Close to Train Bike & Walking Trails, Parks, Forest Preserves, Shops, Restaurants and Great Schools!



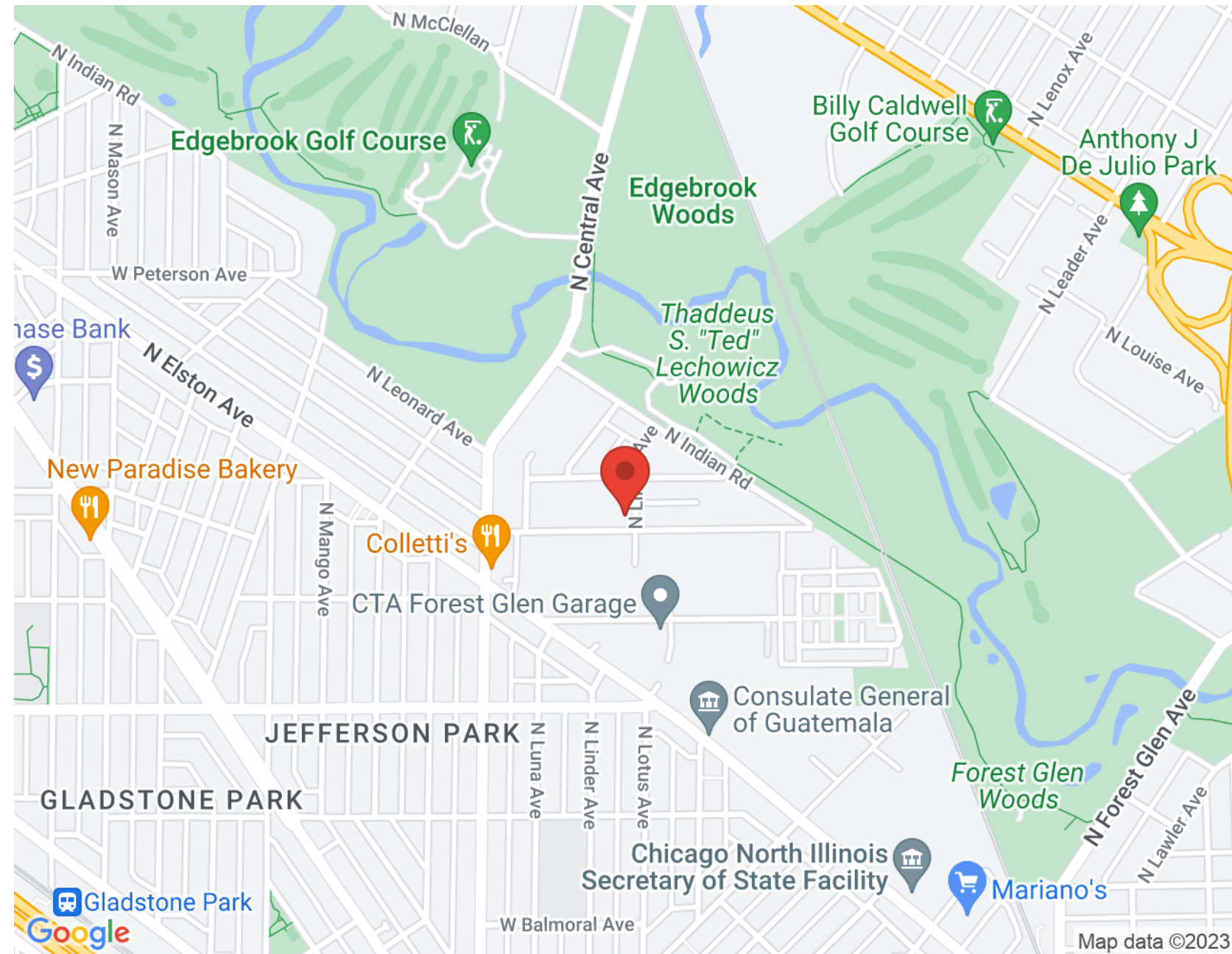




SIZES AND DIMENSIONS ARE APPROXIMATE, ACTUAL MAY VARY.

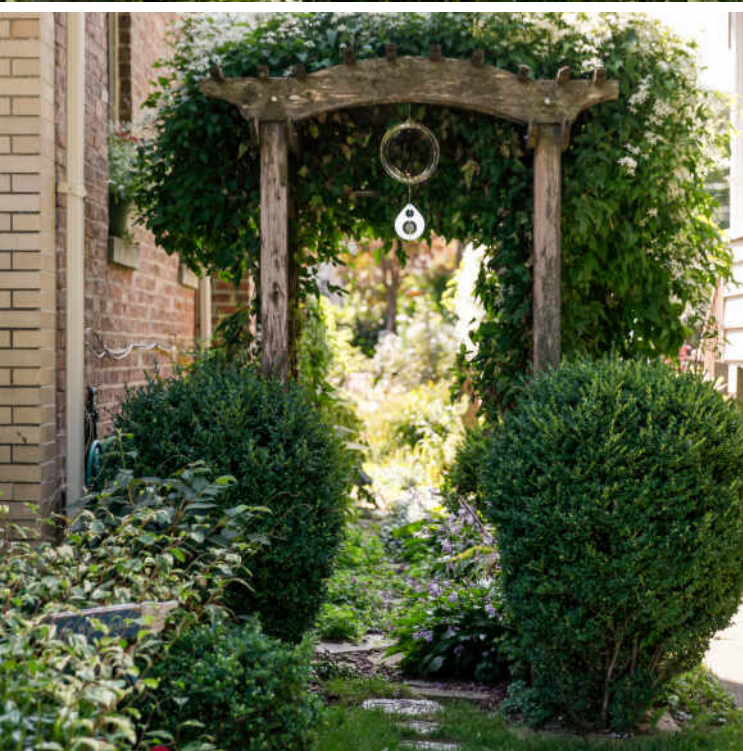
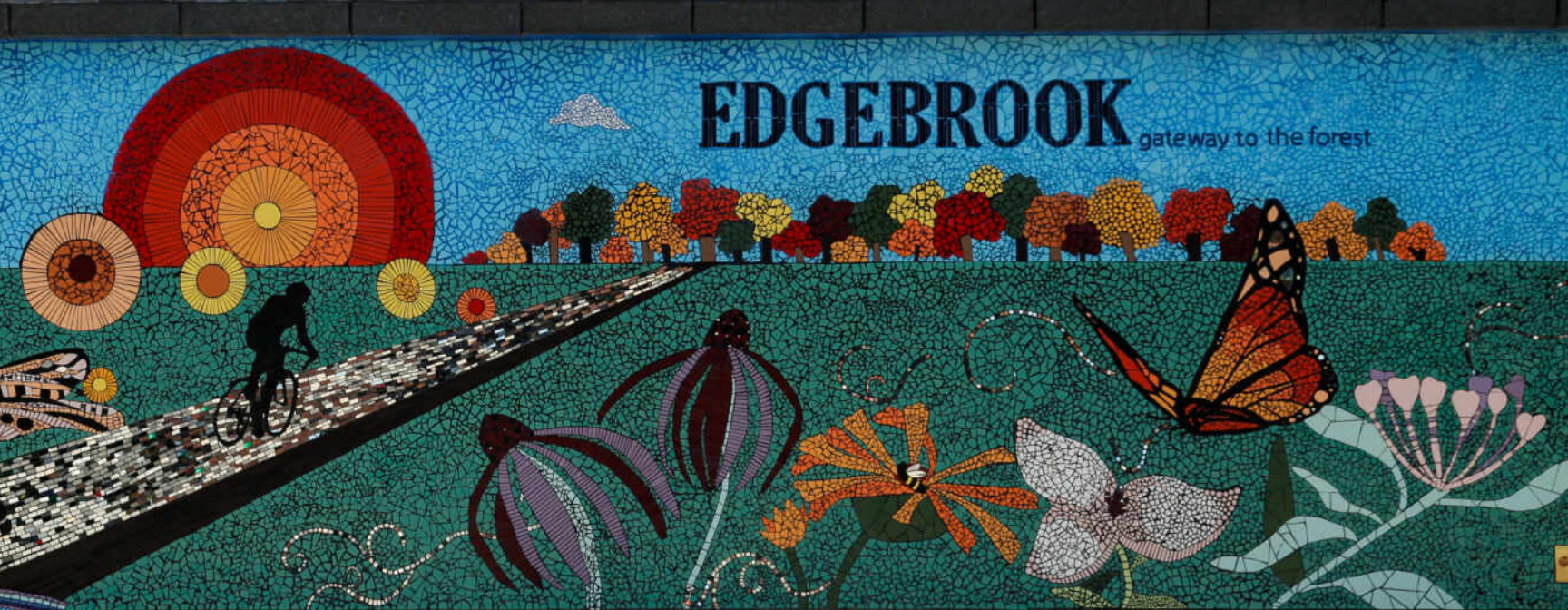


SIZES AND DIMENSIONS ARE APPROXIMATE, ACTUAL MAY VARY.





GRACED WITH GOLF COURSES, BIKING TRAILS AND FOREST PRESERVES, **EDGEBROOK** IS A TIGHT-KNIT NEIGHBORHOOD LOCATED WITHIN THE FOREST GLEN COMMUNITY AREA.



Homes in this bedroom community are mostly single-family and range from new construction to beautifully maintained older homes.

Several upscale eateries along Touhy and Devon avenues offer residents dining options from around the globe. For nightlife and shopping, there are a number of nearby neighborhoods to explore.

Edgebrook has easy access to the Kennedy and Edens expressways, and two CTA bus routes serve the community along the Metra Milwaukee District North Line, which has a stop in the neighborhood.



JONIE MONTALBANO

773.842.2753

8476577000

JONIEM@ATPROPERTIES.COM

WWW.JONIEMONTALBANO.COM



CHRISTIE'S
INTERNATIONAL REAL ESTATE