

5502 GROVESIDE LANE
ROLLING MEADOWS





ROOM DIMENSIONS

LIVING ROOM : 18' x 12'

DINING ROOM : 12' x 11'

KITCHEN : 18' x 15'

FAMILY ROOM : 17' x 13'

PRIMARY BEDROOM : 19' x 12'

SECOND BEDROOM : 13' x 12'

THIRD BEDROOM : 12' x 12'

FOURTH BEDROOM : 12' x 11'

FOYER : 10' x 7'

RECREATION ROOM : 29' x 13'

1AT FLR LAUNDRY : 7' x 5'

4 BEDROOM

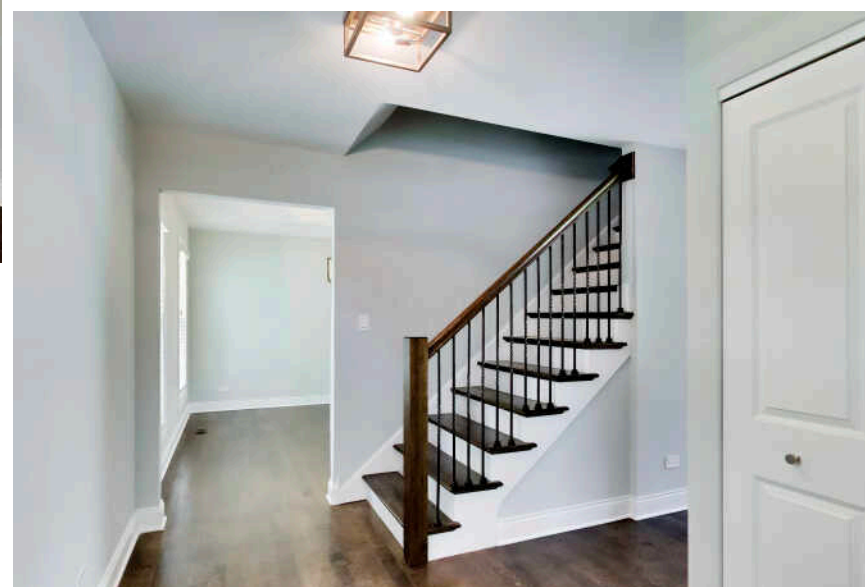
2.1 BATH

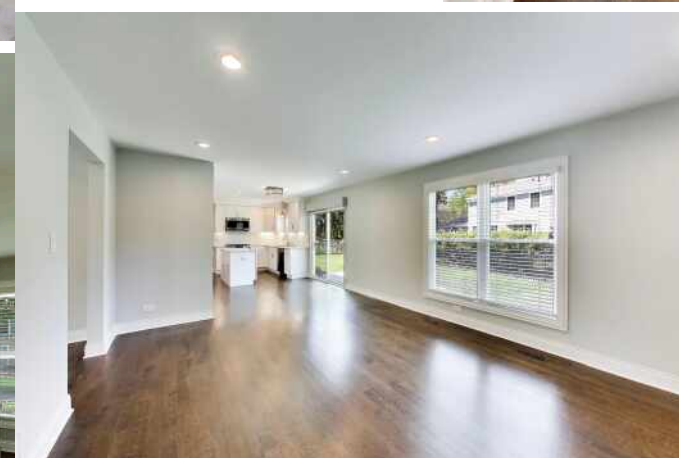
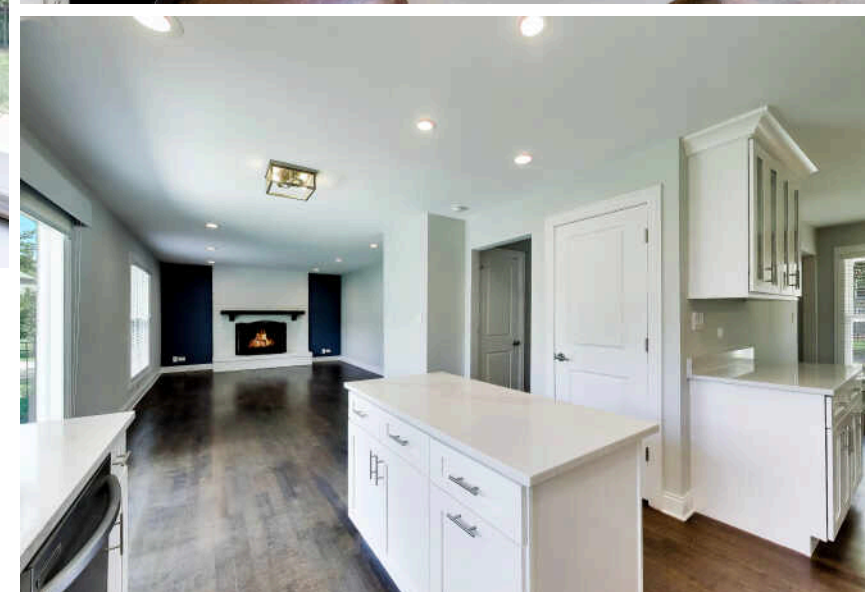
TAXES: \$15,604

PLUM GROVE CREEK - LIKE NEW COLONIAL

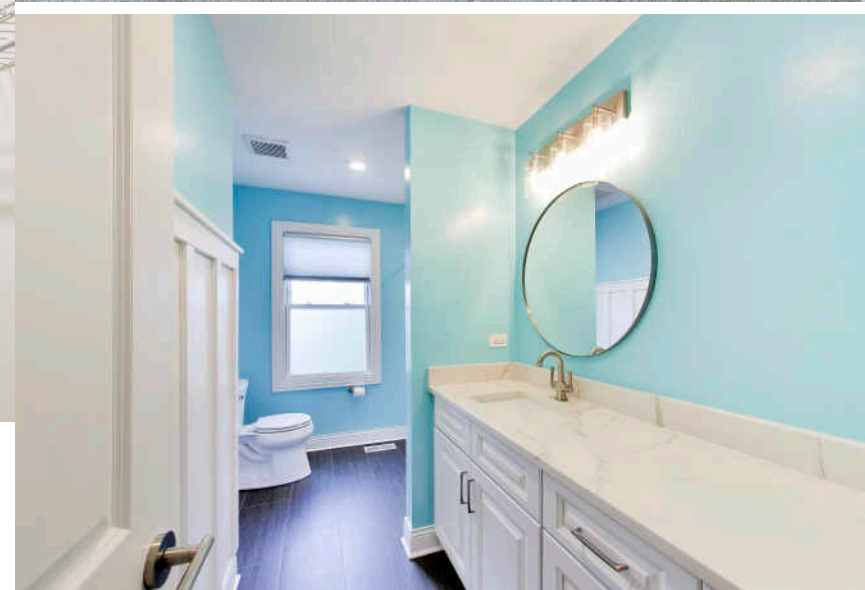
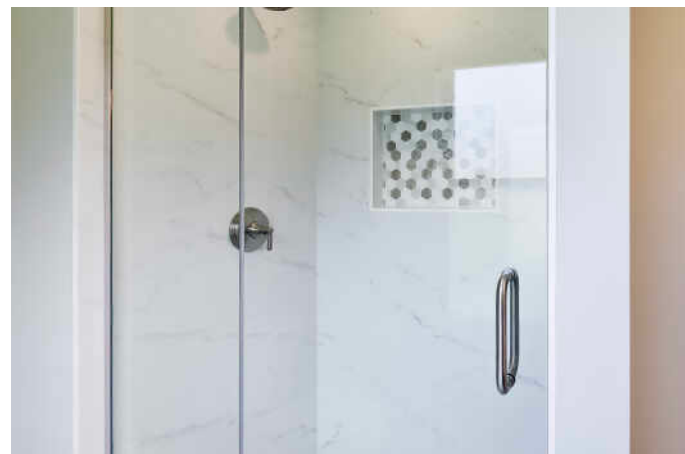
Steps to Cottonwood Park and nestled in a welcoming sidewalk neighborhood - Plum Grove Creek Subdivision - a lifestyle everyone enjoys. Feeding into Hunting Ridge Elementary, Plum Grove Junior High, and the award-winning Fremd High School! Colonial with front sitting covered porch - sits high and proudly on a corner - fenced in spacious lot, this 2021 completely renovated home is sure to please. Wonderful kitchen with a new thoughtful layout offering white shaker cabinetry with soft close doors and drawers, under cabinet lights, Quartz counters and suite of Samsung stainless steel appliances. Kitchen blends flawlessly with the dining room to provide a more open feel with coffee bar corner. Kitchen also has island and eating area - open to family room with gas log fireplace, sliding doors off eating area leads to private back yard - newer concrete patio. Bathrooms were also completely renovated with Kohler fixtures and nice tile work. All hardwood floors were installed new throughout the main floor, stairs, and upstairs hallway. All nice size rooms, replaced panel doors, casings, trim and all windows throughout plus entire interior was just professionally painted throughout. Enjoy 1st floor laundry room convenience with backpack cubby off hallway to garage access. 2021 replaced asphalt driveway leads to attached 2+ car garage with Chamberlain opener with battery back-up. Partial basement is drywall finished - offers nice play/family area or home office/workout area and good size utility area - plus large raised crawl space area (40'x11'). Short drive to expressways, Harper College, all the Woodfield and Schaumburg Convention Center attractions, tons of shopping, restaurants galore and fun.

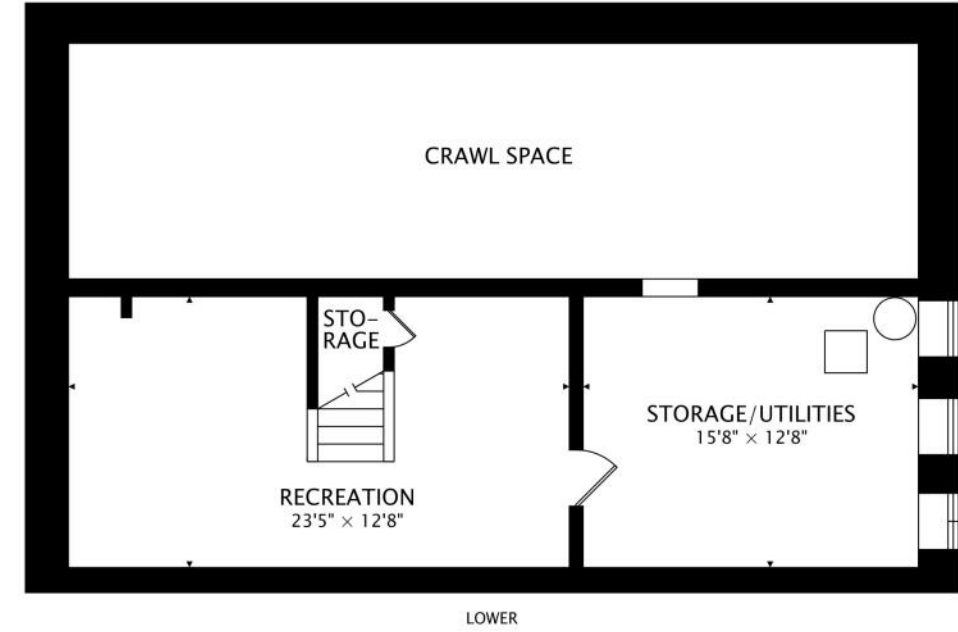
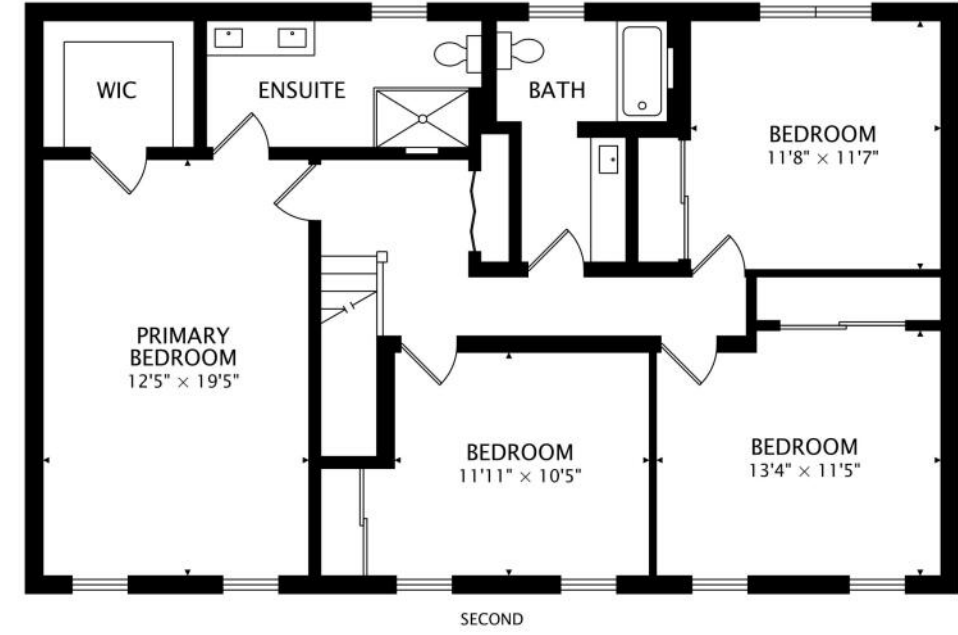
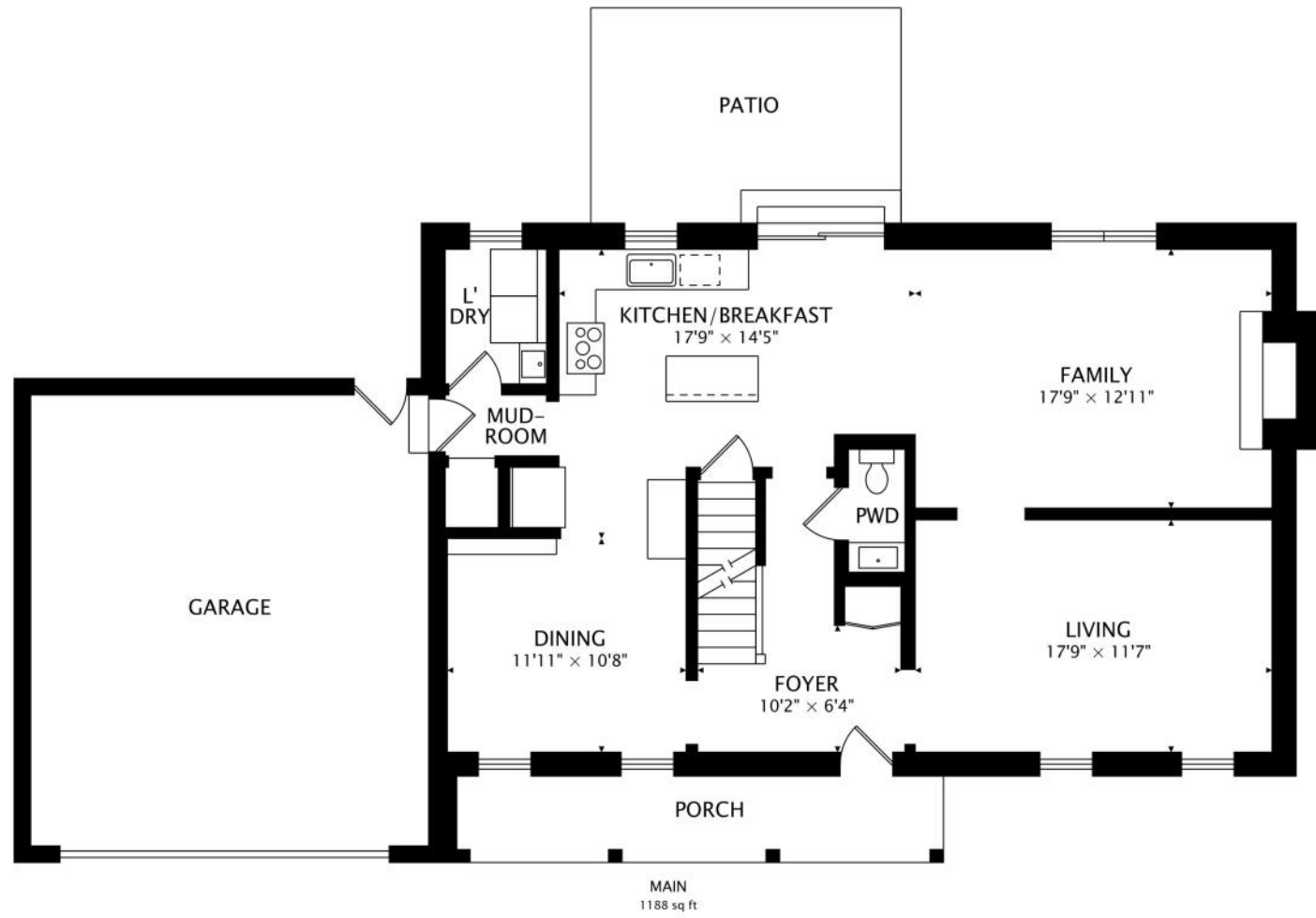
- Complete Renovation - Inside & Out in 2021
- New Paint Throughout Interior June 2026
- Half Basement - Recently Drywall Finished
- Hunting Ridge Elementary, Plum Grove Junior High, Fremd High School
- Cottonwood Park is 1/2 block away

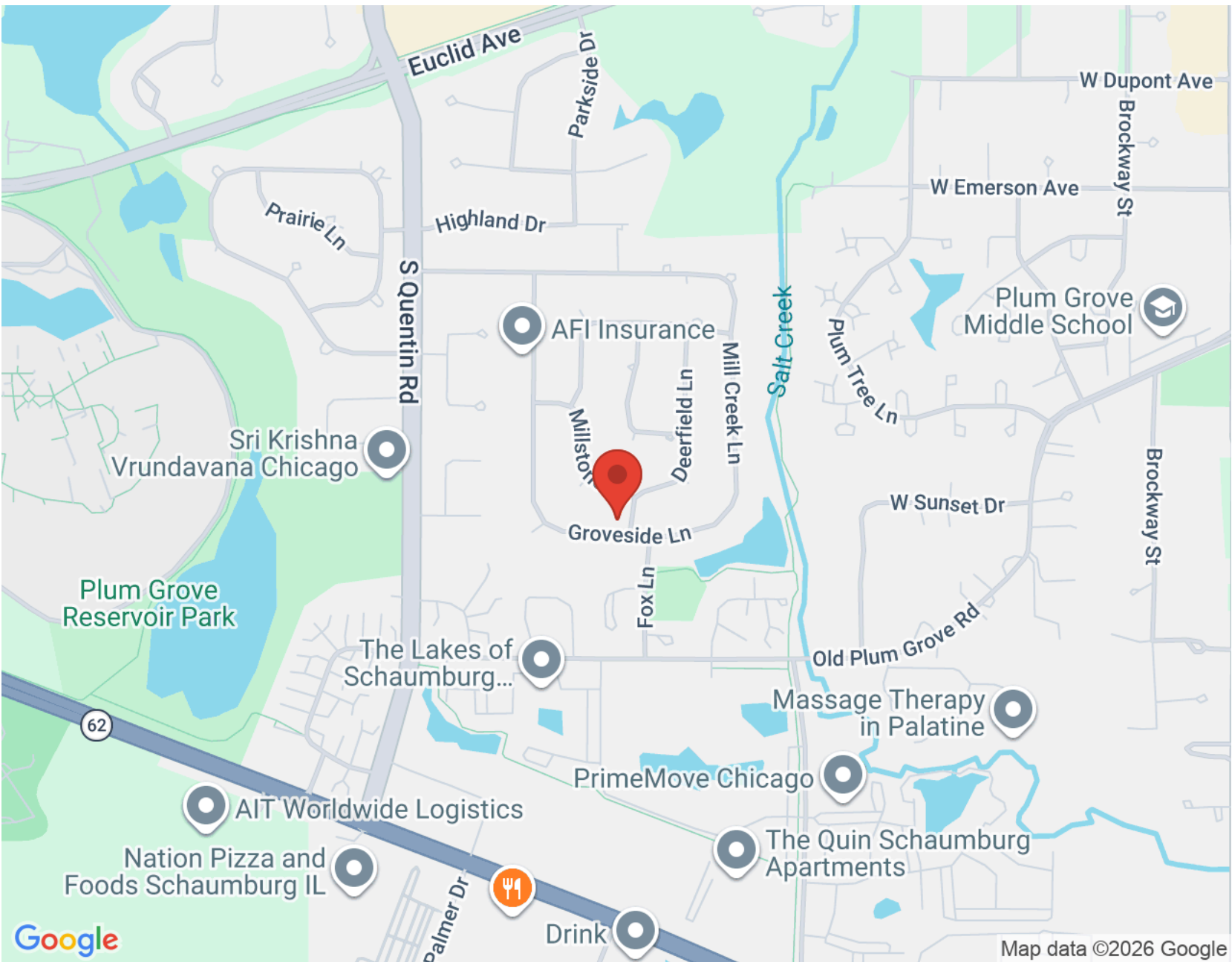














DIRECT: (847) 456-8860
MAIN OFFICE: 847-797-0200
MARKKLOSS@ATPROPERTIES.COM
MARK.KLOSS.COM

MARK  KLOSS

 | **CHRISTIE'S**
INTERNATIONAL REAL ESTATE