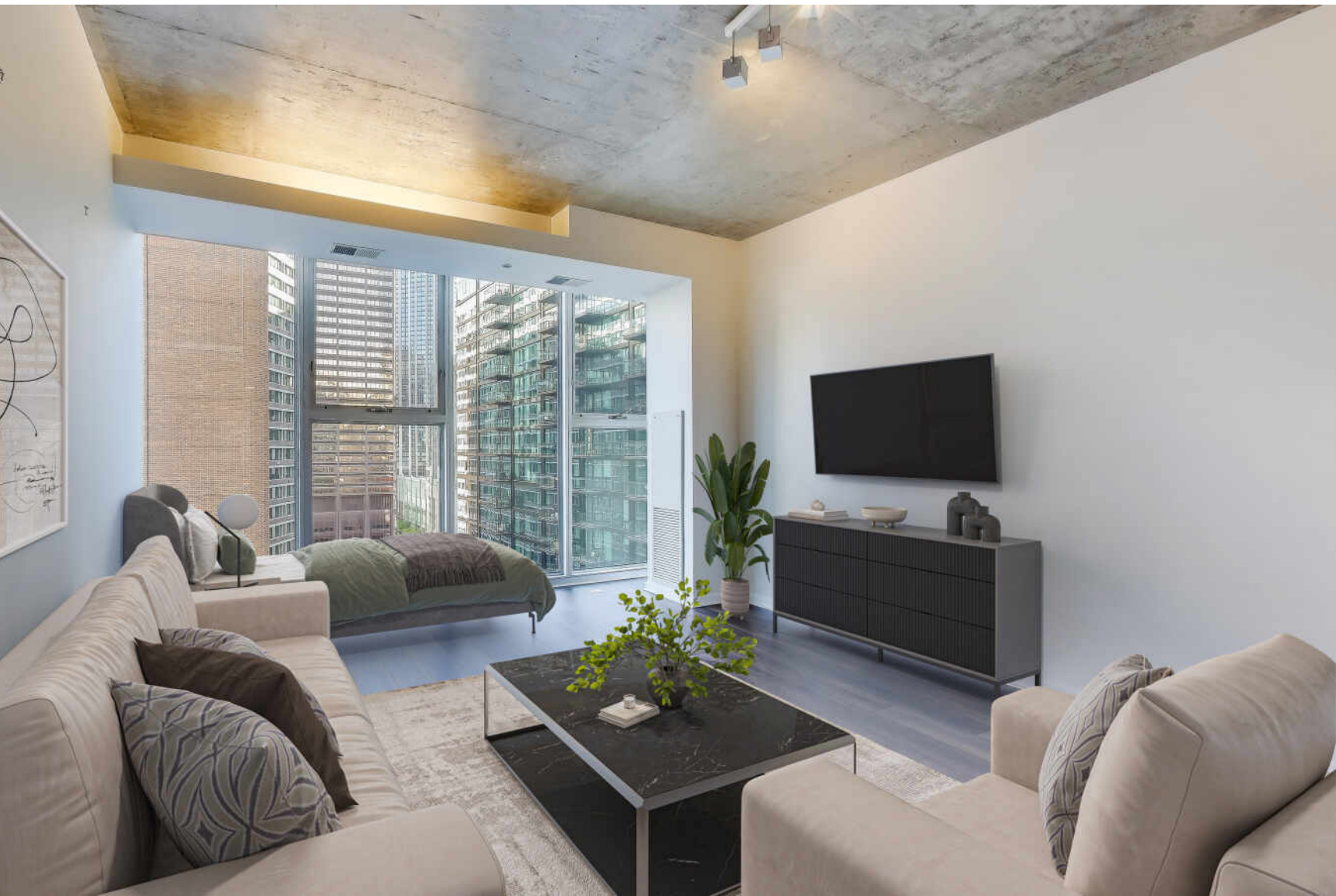


550 N SAINT CLAIR ST UNIT 1303  
STREETERVILLE





#### ROOM DIMENSIONS

LIVING SPACE : 17' × 14'

KITCHEN : 7' × 11'

FOYER : 5' × 6'

#### STUDIO BEDROOM

1 BATH BATH

TAXES: \$5,406.02

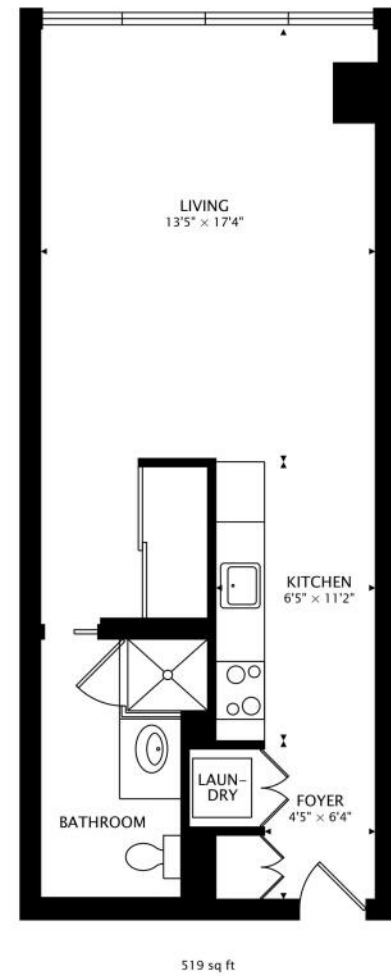
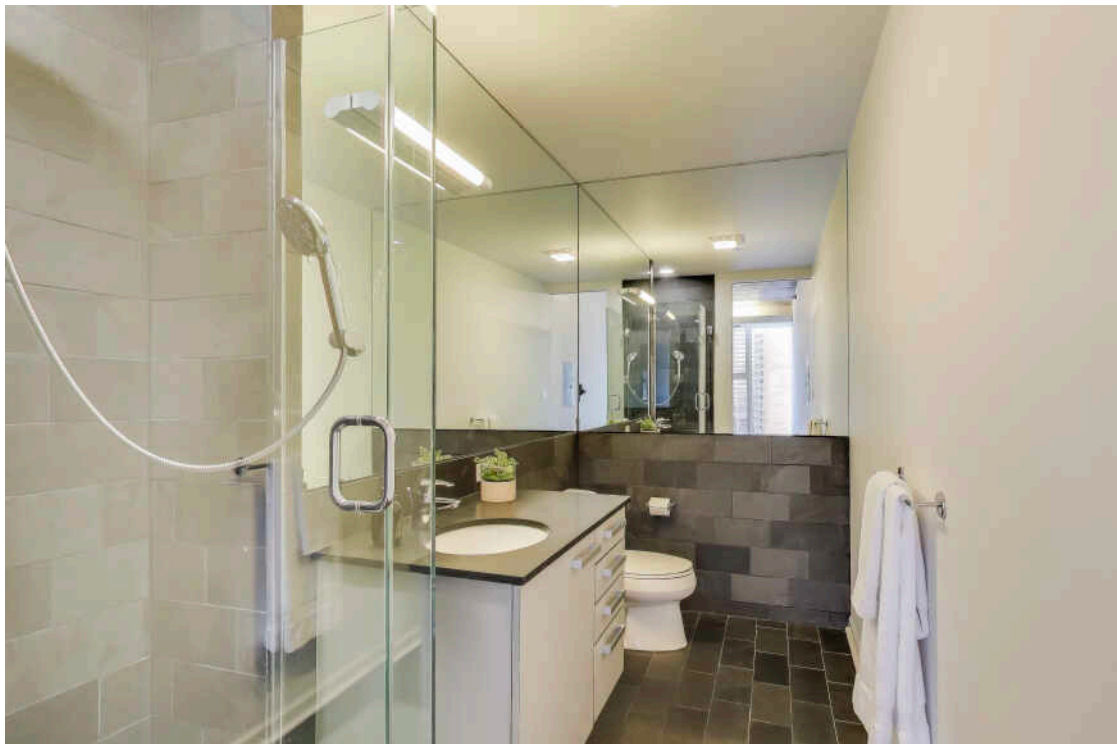
ASSESSMENTS: \$420/MO

## MODERN SLEEK STUDIO IN STREETERVILLE

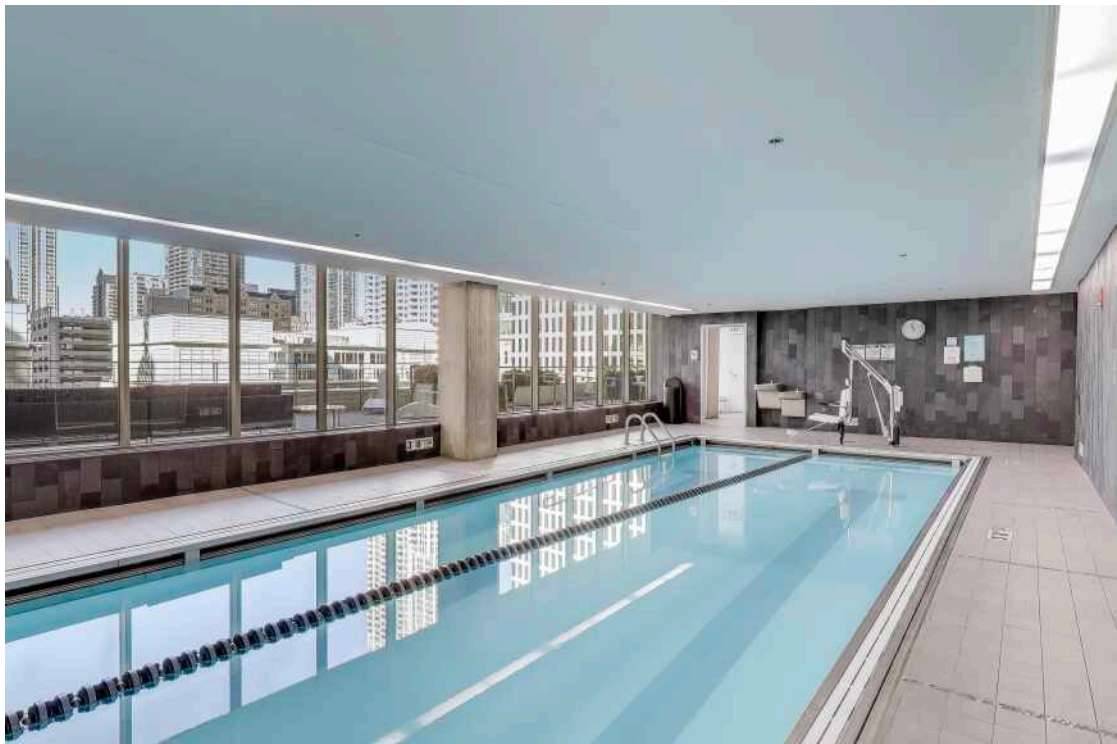
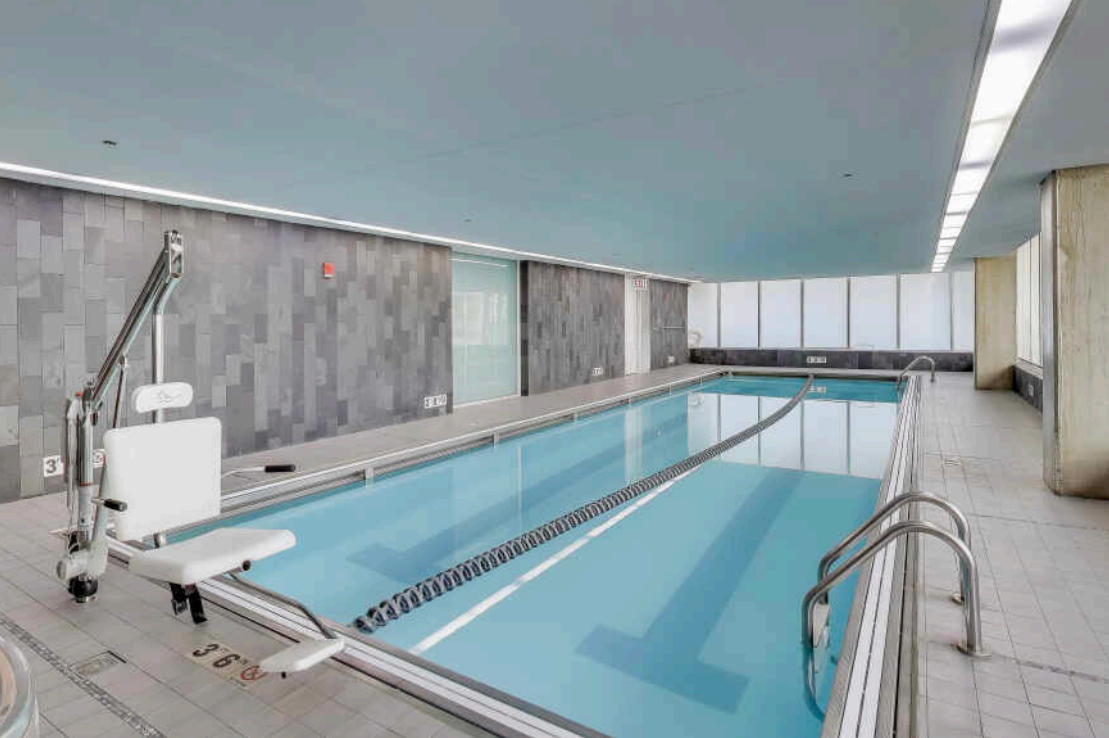
Welcome to beautifully designed studio condo in the heart of downtown Chicago. Nestled within the vibrant Streeterville neighborhood, this urban retreat boasts modern elegance and a convenient location. This stunning studio offers a versatile and open floor plan. The kitchen features stainless steel Sub-Zero Fridge; Bosch Dishwasher, oven and Microwave with Gaggenau stovetop, European style cabinetry with ample storage. The spacious living area is flooded with natural light with fully replaced Luxury Vinyl Tile throughout. Rarely available studio unit in full-amenity building. Washer and dryer in unit and plenty of closet space. Assessments include indoor lap pool, exercise room, storage, bike room and sundeck. Located in the heart of downtown Chicago, this condo provides close proximity to world-class shopping, dining, and entertainment options with easy access to public transportation. Don't miss the opportunity to call this stylish studio condo your own. Sudler Mgmt on site, 24-hr doorman, elevator building. Current wait-list to rent and parking options in the building available.



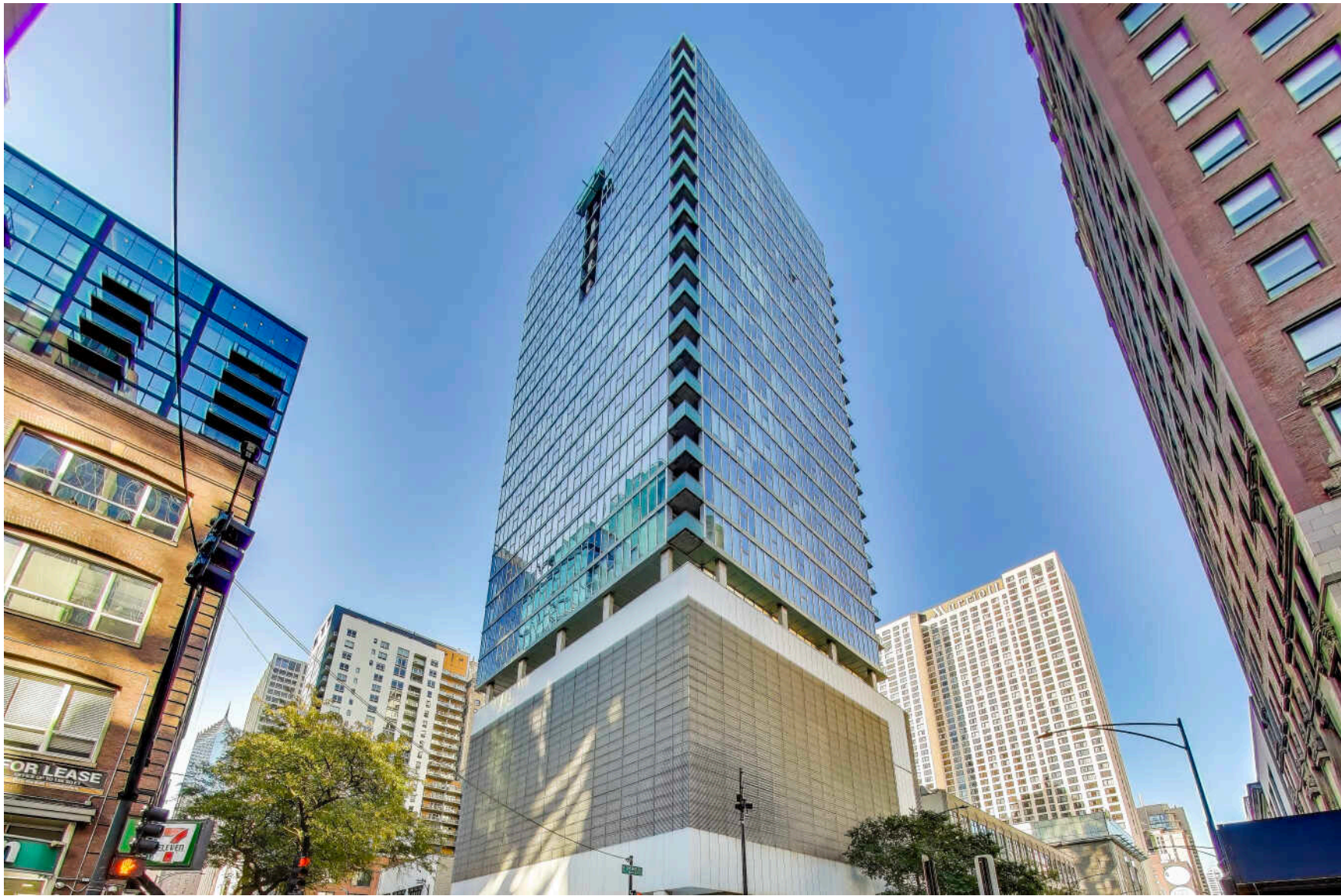
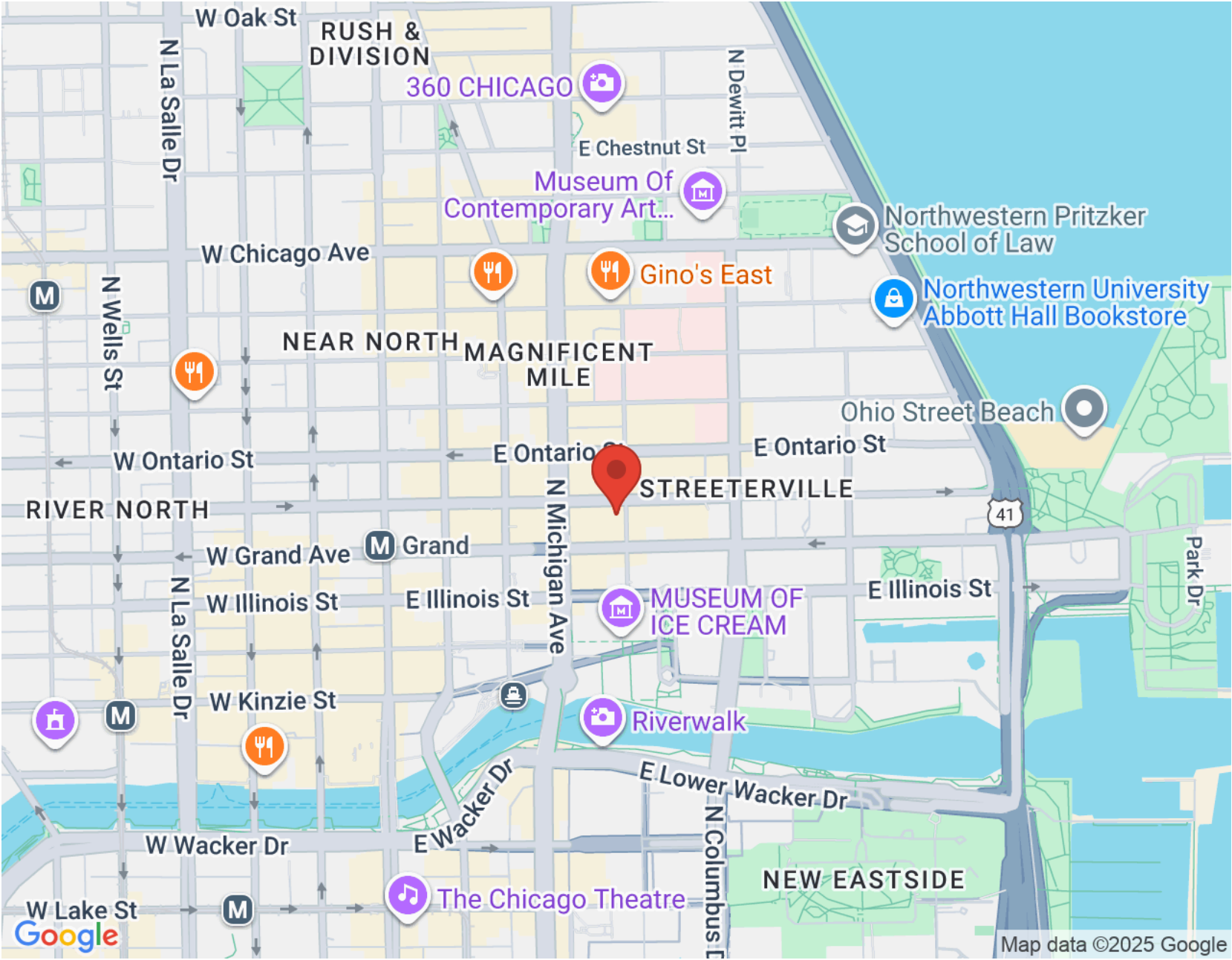














## ERIN MCSHEA

548 W WEBSTER

CHICAGO, IL 60614

(312) 404-9627

EMCSHEA@ATPROPERTIES.COM



## JEANINE MCSHEA

548 W WEBSTER

CHICAGO, IL 60614

(312) 446-9957

JMCSHEA@ATPROPERTIES.COM

