

550 W WELLINGTON AVENUE #8E  
LAKEVIEW EAST/CHICAGO





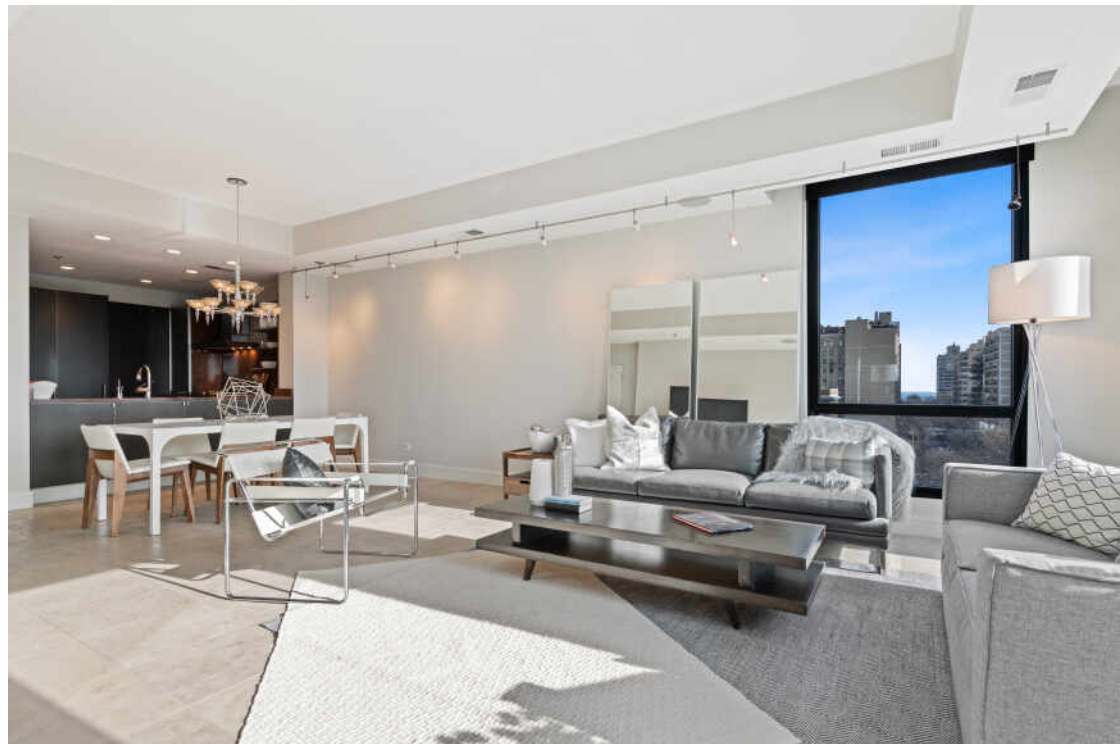
2 BEDROOM  
2 BATH

## MODERN LUXURY BOUTIQUE ELEVATOR BUILDING

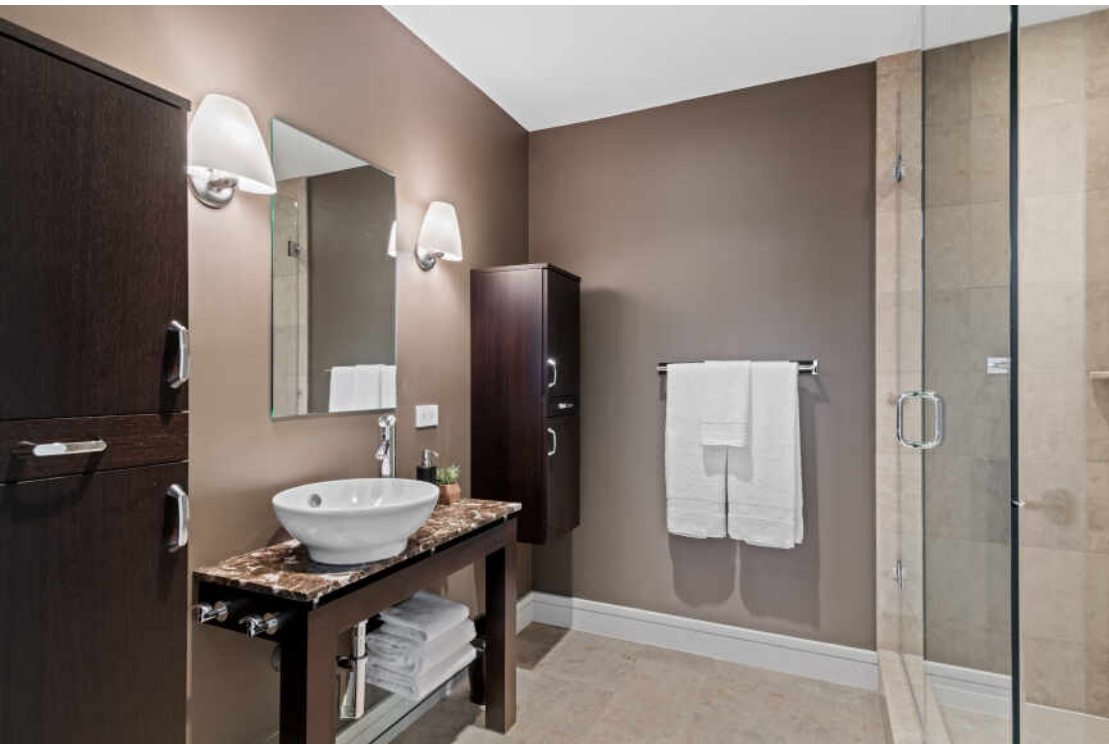
Boutique luxury elevator building in the best part of SE Lakeview, offering an intimate environment in an expansive modern setting! 2 units per floor. Unit features 2 bedrooms plus large den (3rd bedroom opened up), 2 full baths and 2 outdoor spaces. Sunny, generous living and dining rooms with wonderful views. Well organized high-end kitchen with heavy stone counters featuring Bulthaup cabinets, Miele double-oven and cooktop, and SubZero. The den is a perfect oasis to relax with surround sound for entertainment. The large master suite features a spa bath: deep tub, separate shower and long double vanity. The walk-in closet is a dream and there is a private terrace too. The guest bath features wonderful stone tile throughout and glass shower. Other highlights include upgraded stone tile flooring throughout, zoned sound system, in-unit refuse chute and laundry, additional storage and one heated garage parking space. Shared roof deck and additional storage included. Literally steps to Lincoln Park, lakefront trails, Mariano's, restaurants and shopping. Quick access to Lake Shore Dr and "L".

- Nicely sized 2 bedroom, 2 bath with den - plenty of living space to spread out
- High-end, gourmet kitchen featuring Bulthaup, Miele, and SubZero
- Custom stone flooring throughout the property
- The primary suite is a private oasis - large rooms, huge walk-in closet and stone-clad, spa-like bath
- Parking included
- Amazing location - tons of entertainment, dining, and shopping options

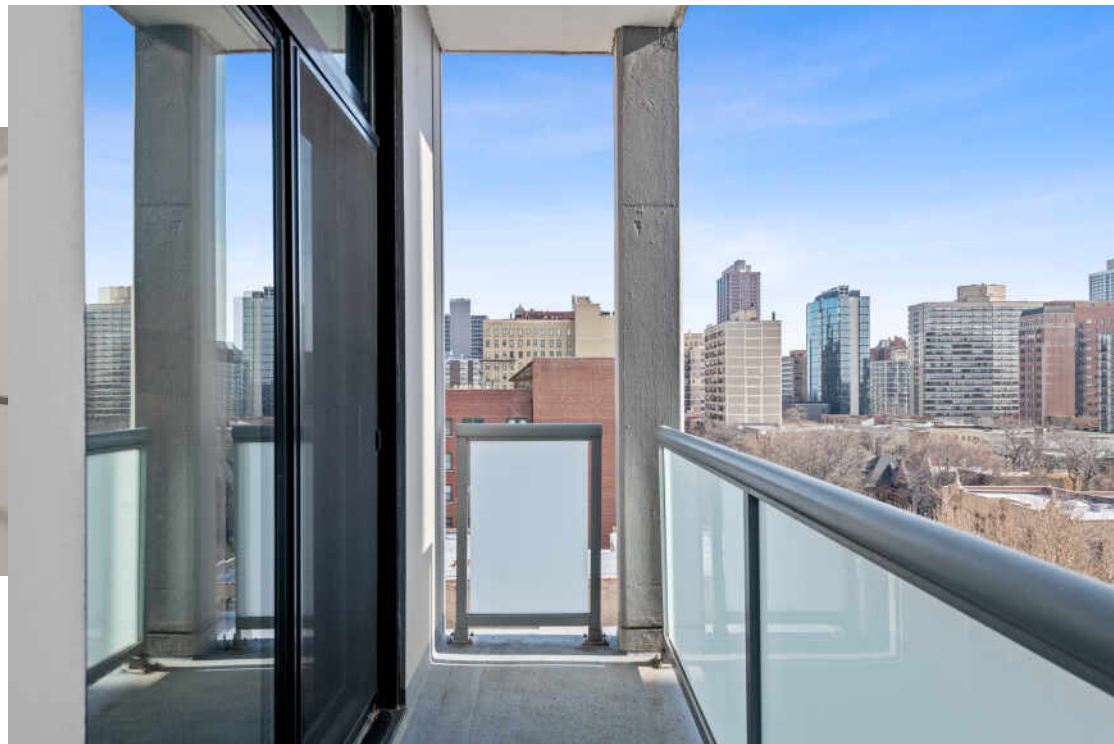


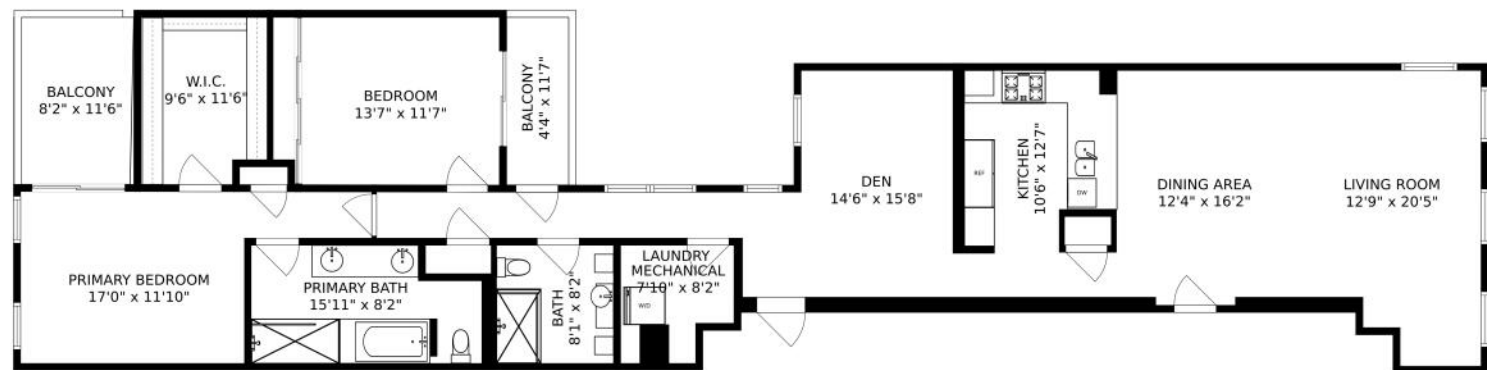




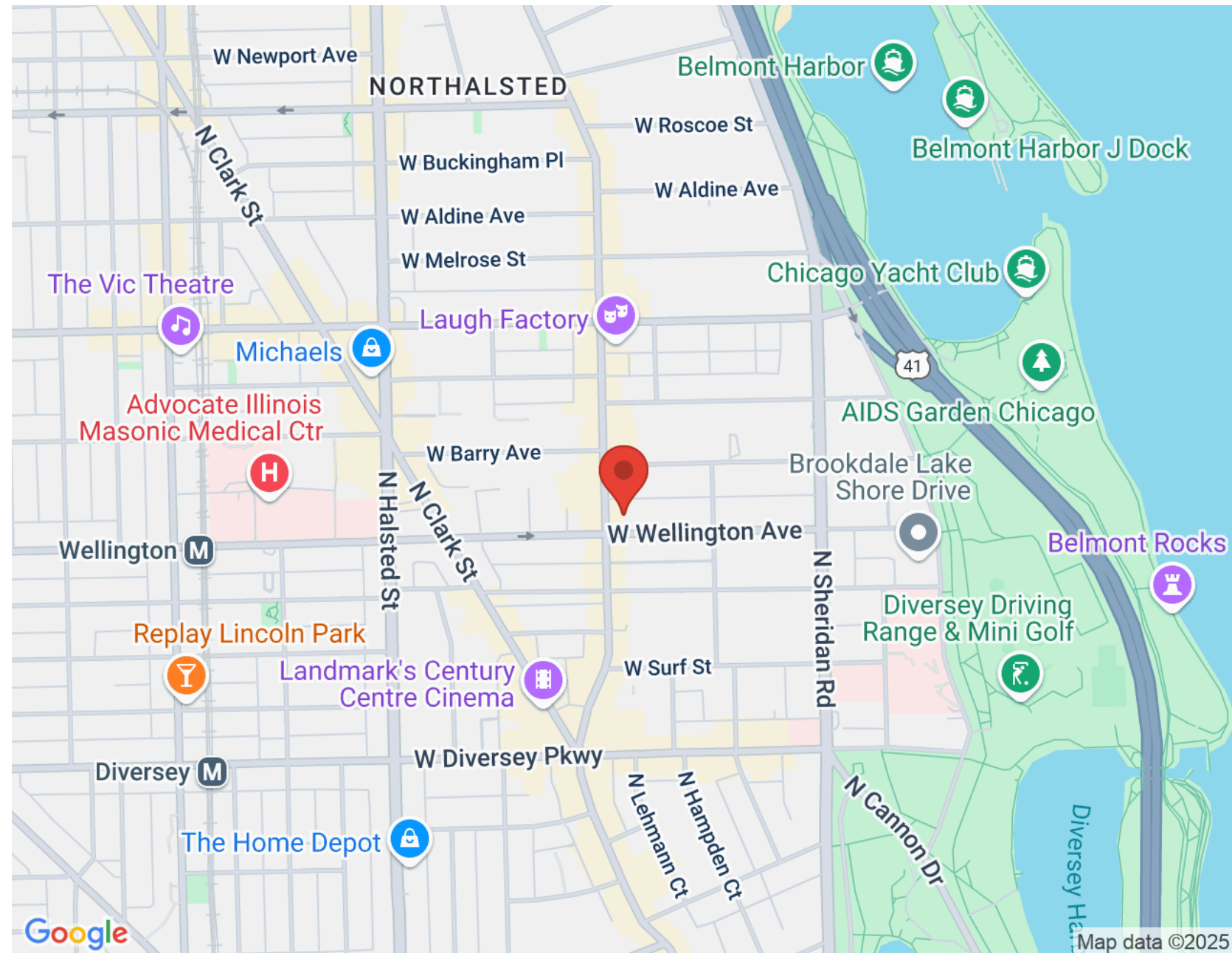








SIZES AND DIMENSIONS ARE APPROXIMATE, ACTUAL MAY VARY.





## RICH NEAL

---

RICH NEAL CHICAGO, LUXURY HOMES

773.220.2884

[WWW.RICHNEALCHICAGO.COM](http://WWW.RICHNEALCHICAGO.COM)



RICH NEAL

CHICAGO

LUXURY HOMES



All specifications, features, designs, price, assessments, taxes and materials are subject to change without notice. Depicted floor plans and architectural renderings are only an artist's impression.

