

**55 STARK ST #12**  
WILLIAMS BAY





### ROOM DIMENSIONS

KITCHEN : 23' × 20'

PRIMARY BEDROOM : 15' × 20'

SECOND BEDROOM : 11' × 18'

THIRD BEDROOM : 11' × 13'

3 BEDROOM

2 BATH

TAXES: \$1,669

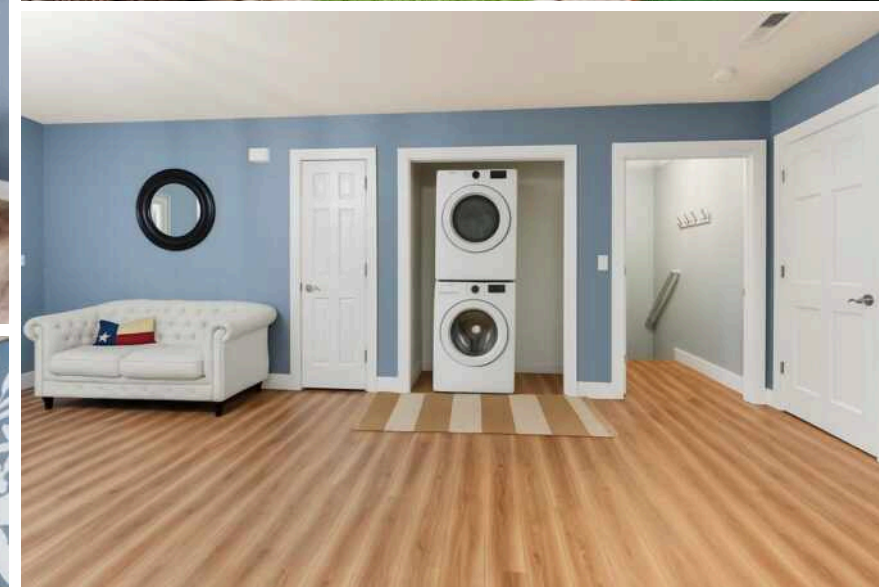
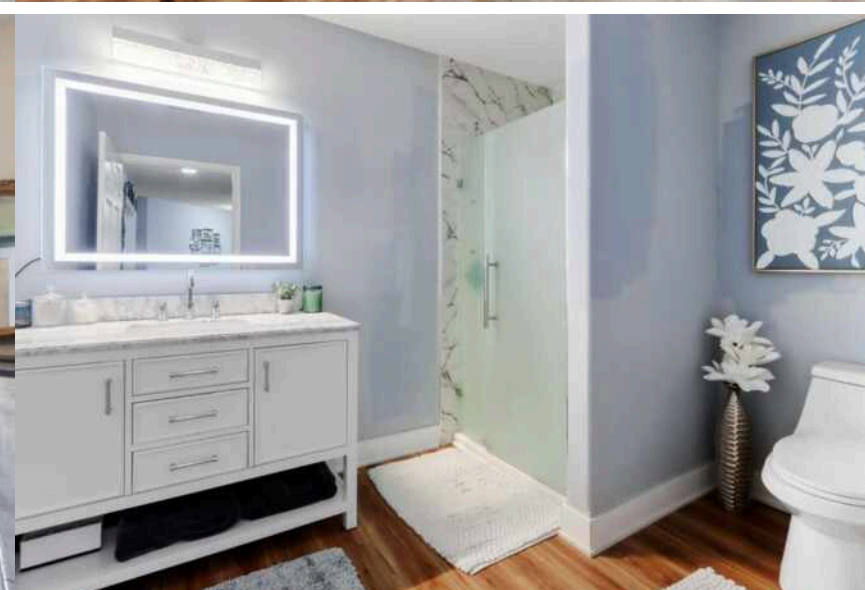
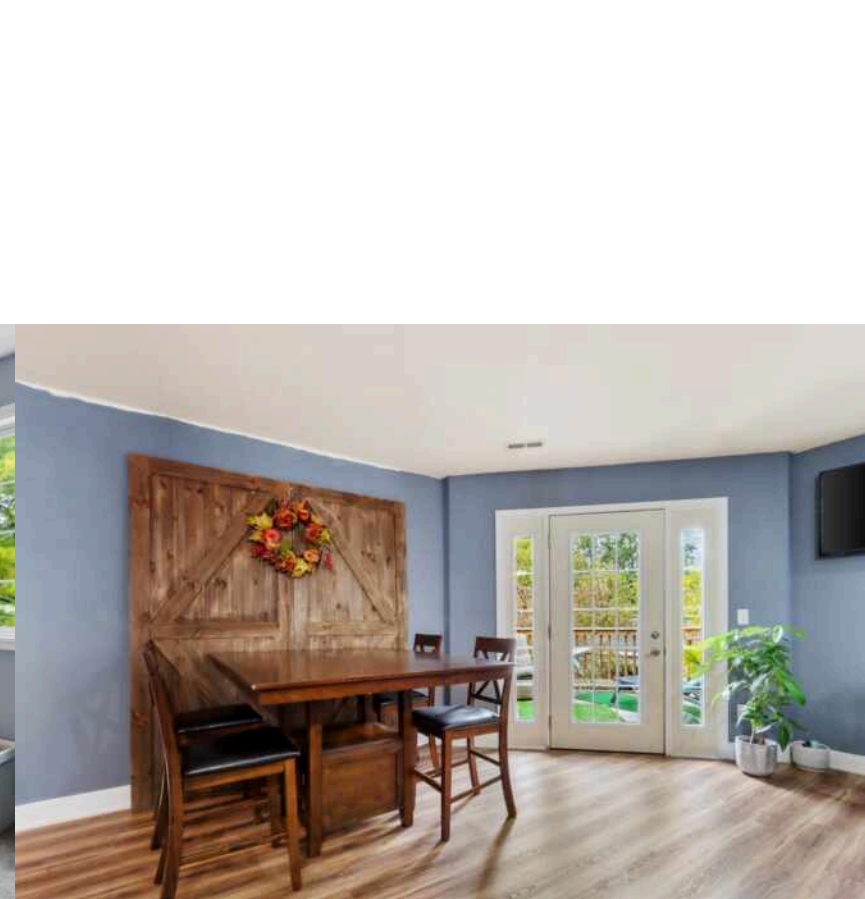
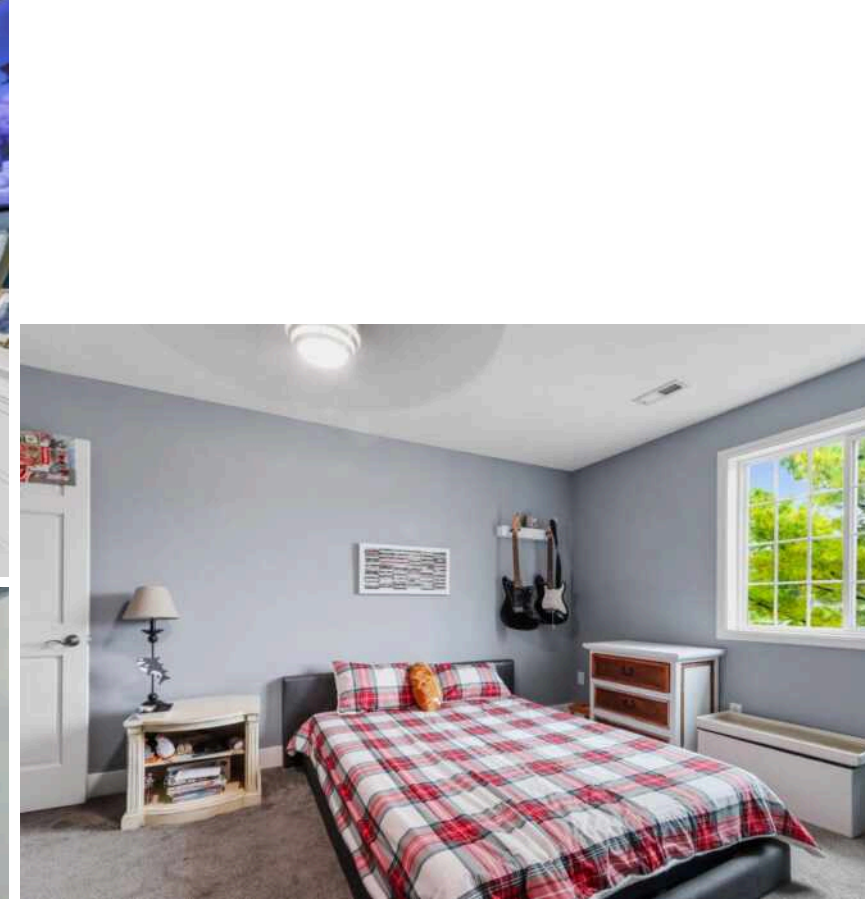
ASSESSMENTS: \$320

You won't believe the space in this stunning 1,700 sq ft condo! Nestled in a prime location just blocks from town & the sparkling shores of Geneva Lake, this bright and airy 3-bedroom home offers the perfect blend of comfort, convenience, and style. Open concept living room featuring a cozy gas fireplace and plenty of natural light. Expansive primary bedroom with a private en-suite bath. The huge kitchen with breakfast bar, and abundant counter space has plenty of room to entertain and leads you to a private deck overlooking the pool. Whether you're looking for a weekend retreat or full-time residence, this condo delivers space, charm and unbeatable location. Plus, enjoy the convenience of a detached 1-car garage. Come see it for yourself, your lake lifestyle awaits!

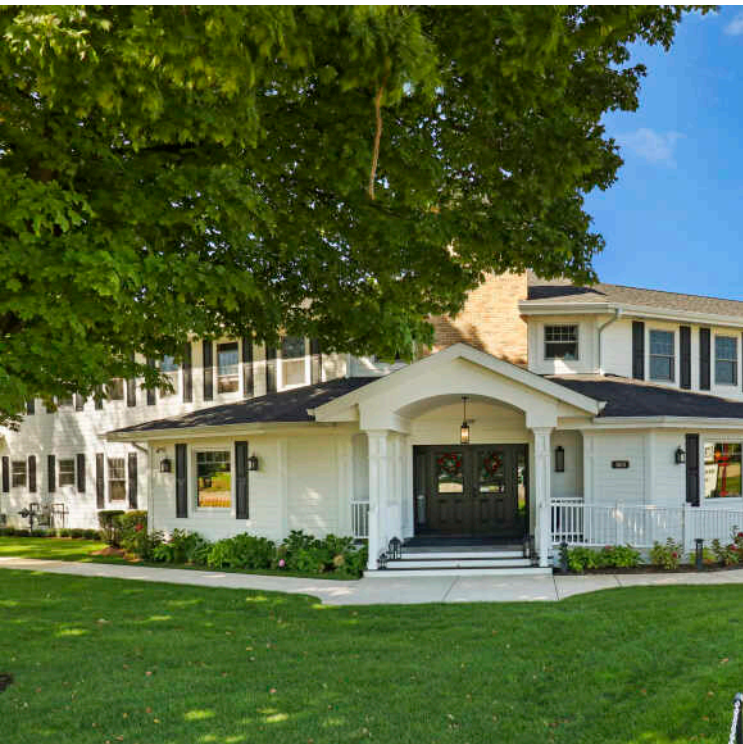












# WILLIAMS BAY IS WHERE SUMMER MEMORIES ARE MADE. VISIT THE LAKESIDE TOWN TO FIND OUT FOR YOURSELF.

Named after Captain Israel Williams, a captain in the War of 1812, Williams Bay became increasingly popular when rail service expanded into southern Wisconsin, and Chicagoans began frequenting the region during the summer. The area continues to serve as a thriving summertime destination. Located in Walworth County, the idyllic village lies along the shores of scenic Geneva Lake.

The Geneva Lake Shore Path is a great way to view Williams Bay's natural beauty, and the local beach is ideal for swimming. Williams Bay residents and visitors can access Geneva Lake's many aquatic opportunities and can relax by the water or go boating, swimming, fishing, or canoeing.

The community is also home to the University of Chicago Yerkes Observatory, which houses the school's Department of Astronomy and Astrophysics and the largest refracting telescope in the world.

Local real estate includes condominium buildings, historic lakefront mansions, and new construction opportunities.





## NOTES



## TRACY SALLEE

BROKER

262.203.1385 - DIRECT LINE

TSALLEE@ATPROPERTIES.COM



All specifications, features, designs, price, assessments, taxes and materials are subject to change without notice. Depicted floor plans and architectural renderings are only an artist's impression.

