

5617 N WAYNE AVENUE 1
EDGEWATER



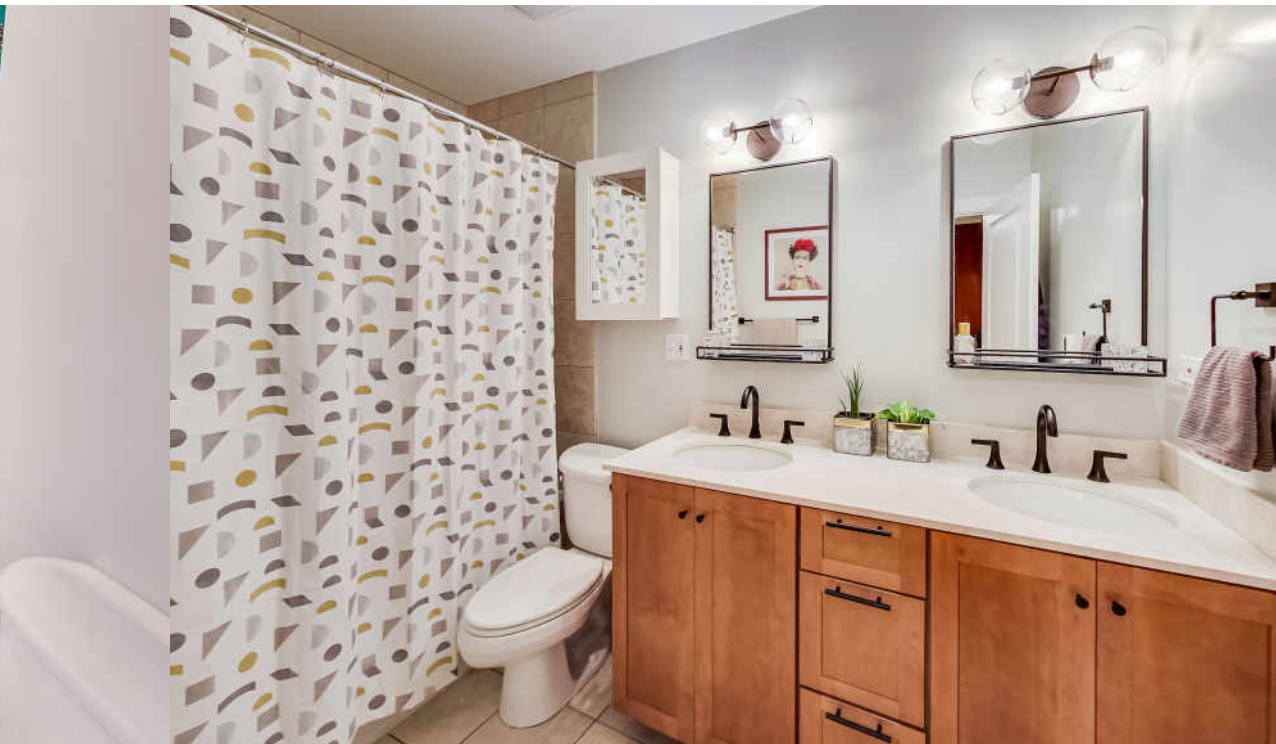


3 BEDROOM
2.5 BATH
TAXES: 5548.93
ASSESSMENTS: 345.00

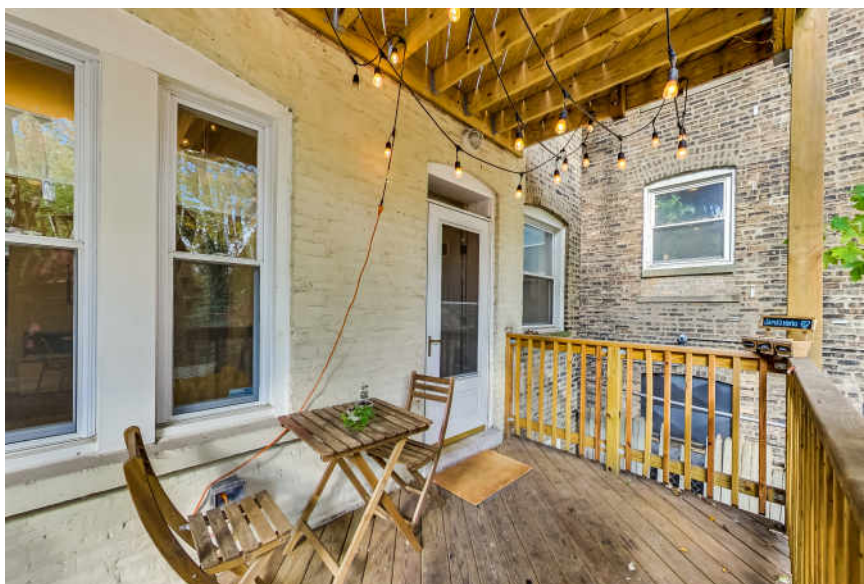
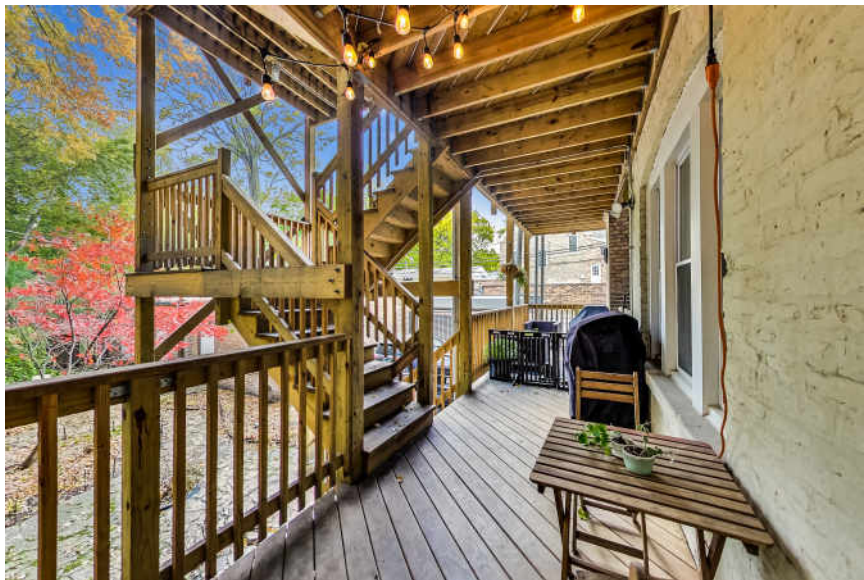
LIVES LIKE A SINGLE FAMILY

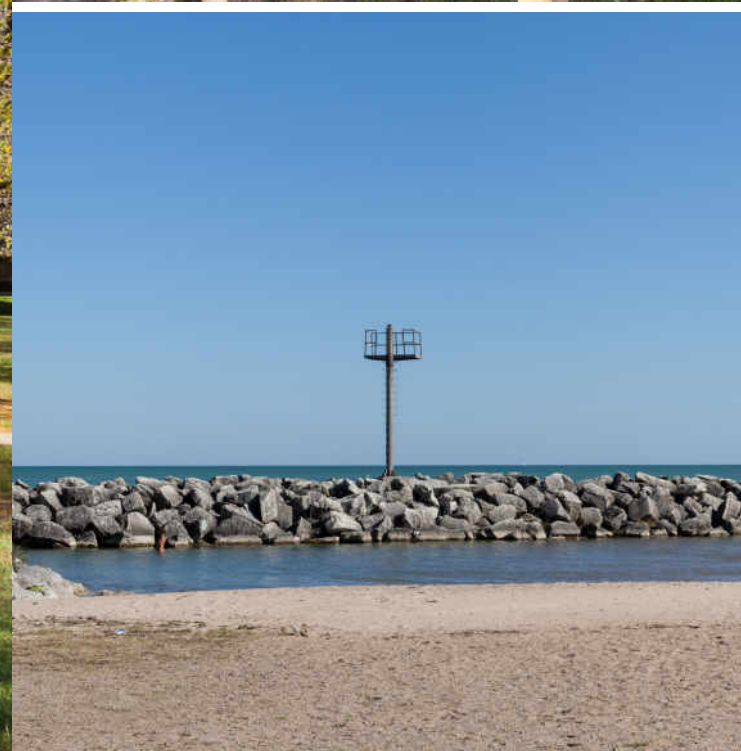
Stunning sophistication at this large 3 bedroom 2.5 bath duplex down condo. Situated on a beautiful tree lined street, just steps from Pierce Elementary school, this beautiful home lives like a single family. Tall ceilings (11 foot) flood the living room with light, adding to the beauty of this room are coffered ceilings, crown molding, a fireplace and custom bookshelves. The kitchen offers 42 inch cabinets, stainless steel appliances, granite counter tops, a pot filler plus a walk in pantry. The kitchen over looks a large dining/family room space with a vintage built in hutch. Large primary bedroom with an organized closet and an updated bath that has heated floors, Jacuzzi tub and double sink. Huge, bright lower level family room, 2 additional bedrooms, full bath with marble countertop complete the lower level of this home. There's a private deck off the kitchen and a beautiful common yard. Additionally there is side by side in-unit washer and dryer, additional storage, a security system, and a private garage. This home has a very flexible floor plan, especially nice if one is working from home. Short walk to lake, Red line, Andersonville shops & restaurants. This home is everything your clients have been looking for.











LAKESIDE LIVING NEVER GOES OUT OF STYLE IN **EDGEWATER**.

The neighborhood draws residents with its spectacular lake views, large beaches, thriving theater scene and restaurants with cuisines from around the world. Edgewater also boasts its fair share of antique shops, cafes and parks.

Encompassing a number of neighborhoods between Uptown and Rogers Park, the neighborhood offers convenience and proximity to downtown Chicago and nearby Loyola University. The community is easily accessible by Lake Shore Drive and public transportation, including the CTA Red Line and Metra's Union Pacific North Line.

Edgewater retains some of its early posh glamour with stately mansions, Neo-Gothic churches and the iconic 1920s pink Edgewater Beach Apartments. The Bryn Mawr Historic District features opulent mansions and vintage lamp posts. Edgewater housing choices also include high-rise condominiums, vintage three-flats, greystones and new-construction single-family homes.



NOTES _____



CONNIE GRUNWALDT

(773) 895-4246

773-432-0200

CONNIEG@ATPROPERTIES.COM



5617WAYNE1.INFO