



5618 S PARK AVENUE
HINSDALE

5618 S PARK AVENUE · HINSDALE



BRYAN BOMBA BROKER

630.286.9242 mobile
bryan@bryanbomba.com
www.hinsdalearearealestate.com

@properties | CHRISTIE'S
INTERNATIONAL REAL ESTATE

LP LUXURY
PORTFOLIO
INTERNATIONAL

5618 S PARK AVENUE • HINSDALE



@properties | CHRISTIE'S
INTERNATIONAL REAL ESTATE

LP LUXURY
PORTFOLIO
INTERNATIONAL



5618 S PARK AVENUE TIMELESS MCNAUGHTON CRAFTSMANSHIP ON A RARE, EXPANSIVE LOT.

ROOM DIMENSIONS

Living Room	13'x18'
Dining Room	16'x12'
Kitchen	13'x14'
Breakfast Room	8'x20'
Family Room	22'x16'
Sun Room	13'x19'
Office	13'x13'
Laundry Room	15'x6'
Primary Bedroom	22'x17'
Bedroom Two	17'x10'
Bedroom Three	14'x12'
Bedroom Four	13'x14'
Bedroom Five	18'x11'
Recreation Room	35'x35'

FEATURES

Luxury is about having room to breathe-literally and figuratively. This McNaughton-built residence delivers what discerning families quietly seek: room to live well-indoors and out - and a home built the right way. Known for family-friendly floor plans and the exclusive use of time-tested materials and workmanship, McNaughton homes are prized by those in the know-and this one is no exception. Volume ceilings create an immediate sense of light and openness, while thoughtful proportions make everyday living effortless. Every bedroom enjoys a private or semi-private bath, offering comfort and privacy for all. A first-floor laundry and mudroom anchors busy routines, while a three-season room extends living beyond the walls. An extremely oversized attached three-car garage adds rare convenience. The brick and stucco exterior speaks to durability and classic appeal. The 80x180 lots offer a level of privacy seldom offered. Best of all, enjoy an easy walk to Elm School and Hinsdale Central High School-where community, academics, and lifestyle converge.



BRYAN BOMBA BROKER

630.286.9242 mobile

bryan@bryanbomba.com
www.hinsdalearearealestate.com





















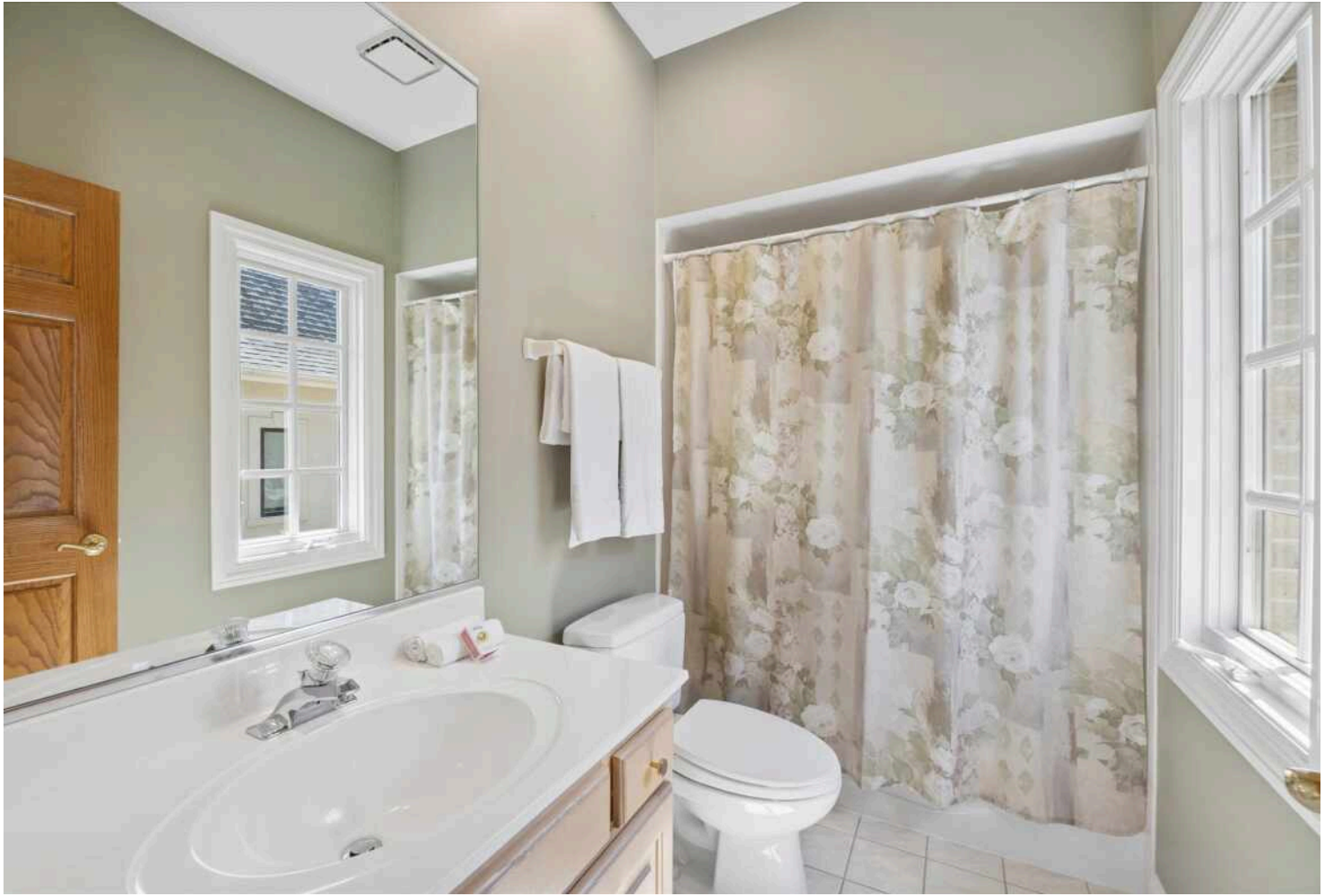




















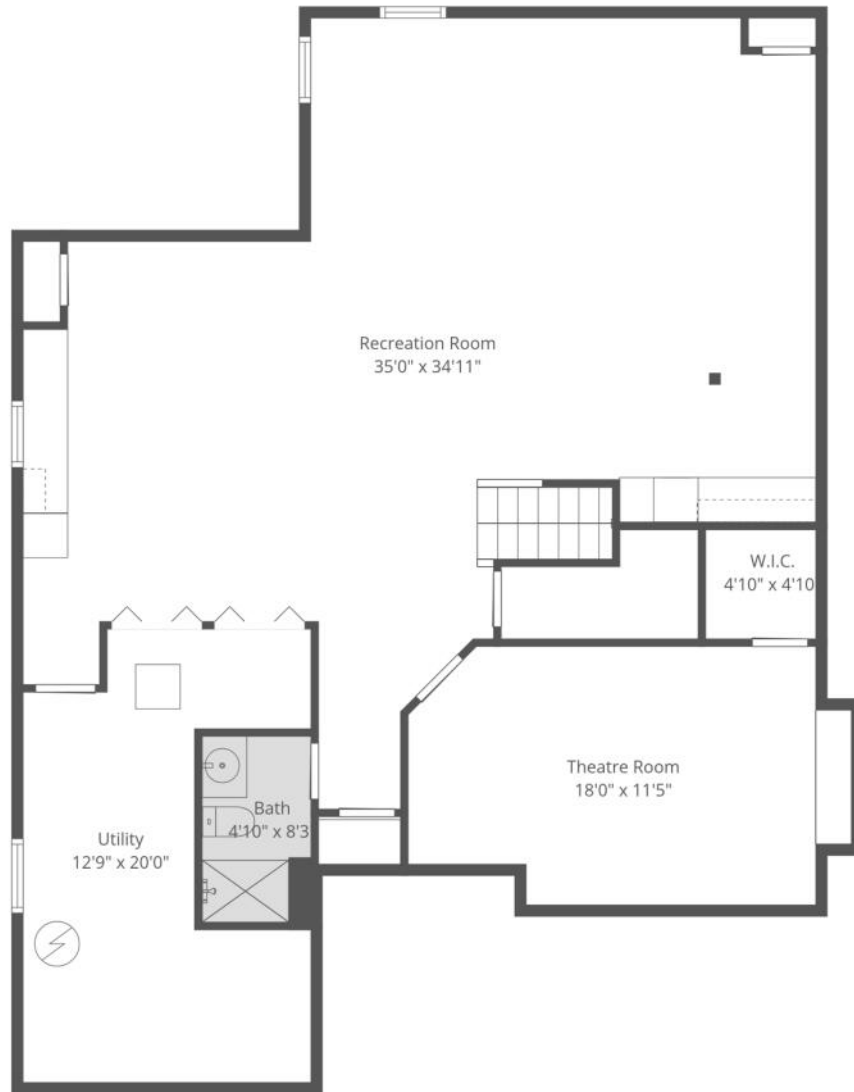














HINSDALE'S HISTORIC DOWNTOWN AND BEAUTIFUL HOMES ATTRACT SOME OF THE STATE'S MOST AFFLUENT RESIDENTS, EARNING THE SUBURB ITS RANKING AS ONE OF THE WEALTHIEST ZIP CODES IN ILLINOIS.

Locals love the natural beauty and historic elegance of Hinsdale, which boasts a number of scenic parks and architectural landmarks.

Downtown Hinsdale offers a step back in time. The downtown district is on the National Register of Historic Places, with several historic buildings dating back to before the community was incorporated in the 1870s. Residents and visitors will also find award-winning restaurants that will satisfy any palate along with a variety of shops, from jewelry stores and upscale boutiques to craft shops and more.

The community has a wealth of amenities such as the Hinsdale Community Swimming Pool, Katherine Legge Memorial Park, and Burlington Park, which is home to various annual events including the farmers market, Fine Arts Festival, and Uniquely Thursdays concert series. There are also numerous parks and athletic facilities for those who enjoy sports like tennis, baseball, and soccer.

Hinsdale has easy access to the Tri-State Tollway, Stevenson Expressway, and three train stations along Metra's BNSF Railway.





@properties® | CHRISTIE'S
INTERNATIONAL REAL ESTATE

Leading REAL ESTATE
COMPANIES
OF THE WORLD®

LP
LUXURY
PORTFOLIO
INTERNATIONAL

