

564 S ROSEHALL LANE, ROUND LAKE
MADRONA VILLAGE





ROOM DIMENSIONS

LIVING ROOM : 14' × 13'

DINING ROOM : 10' × 9'

KITCHEN : 12' × 10'

PRIMARY : 13' × 13'

2ND BEDROOM : 11' × 10'

3RD BEDROOM : 10' × 10'

FAMILY ROOM : 15' × 13'

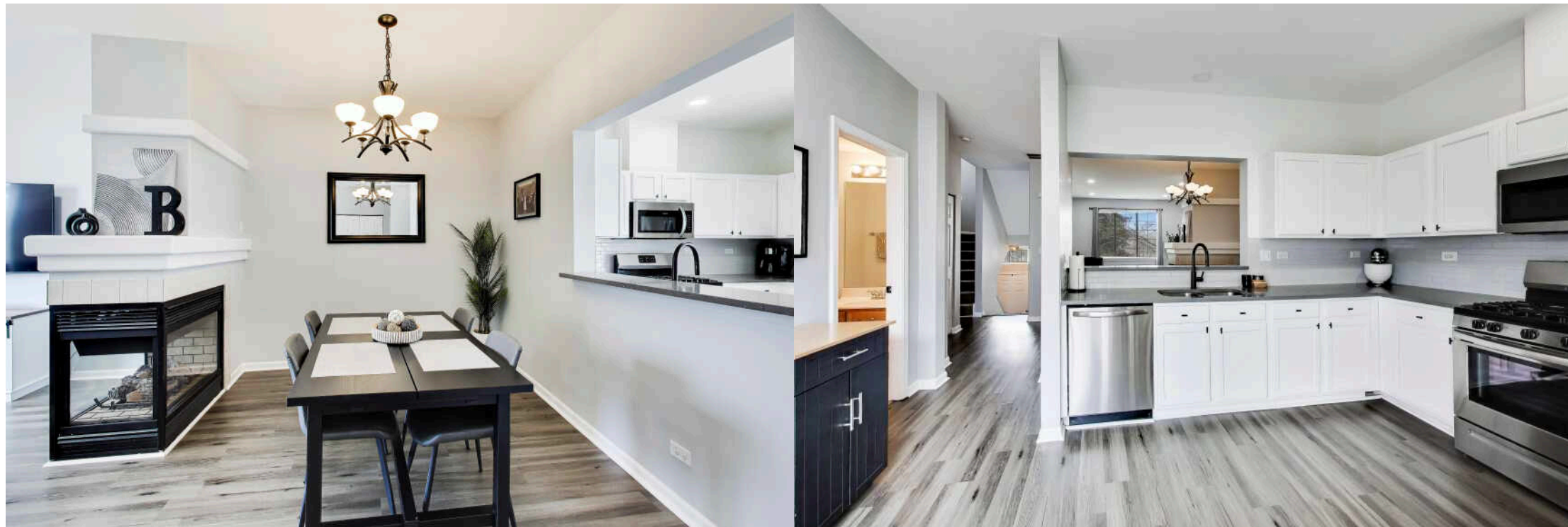
3 BEDROOM

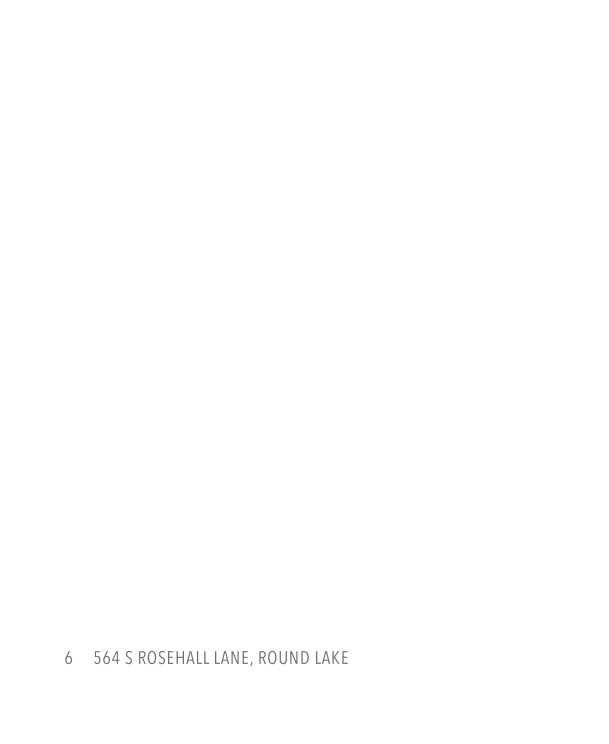
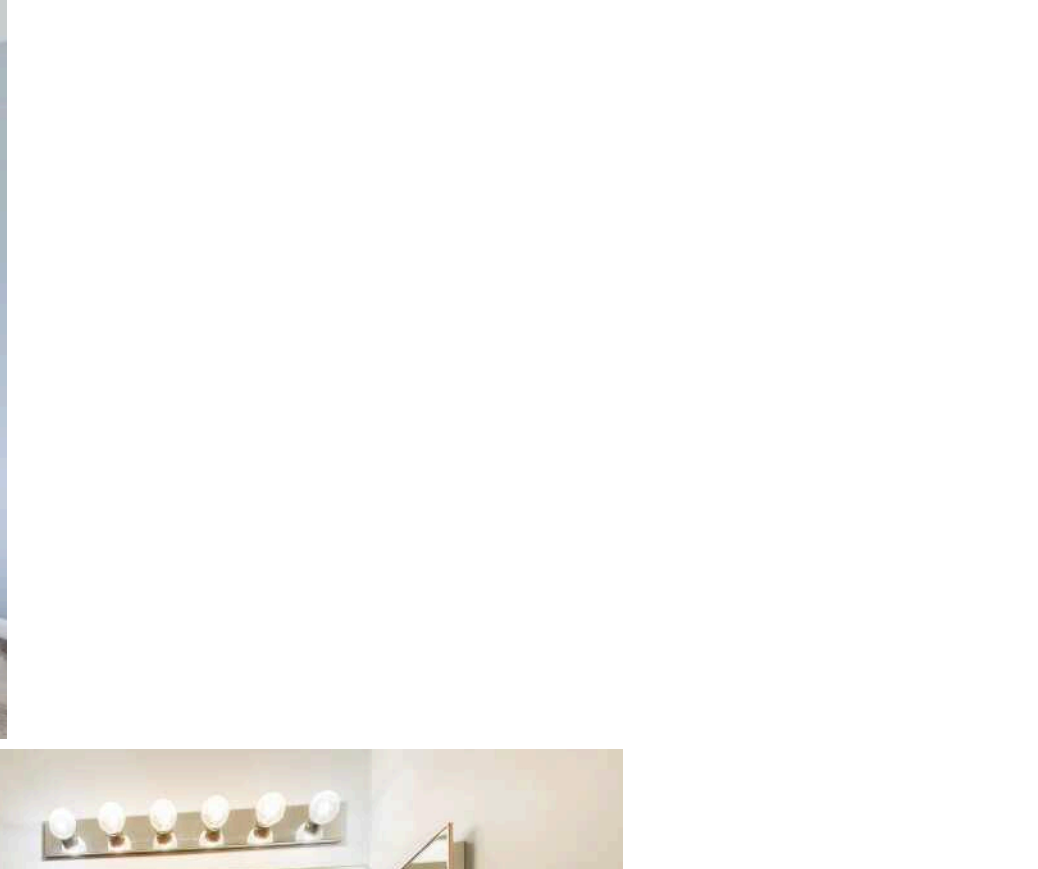
2.1 BATH

TAXES: 6580

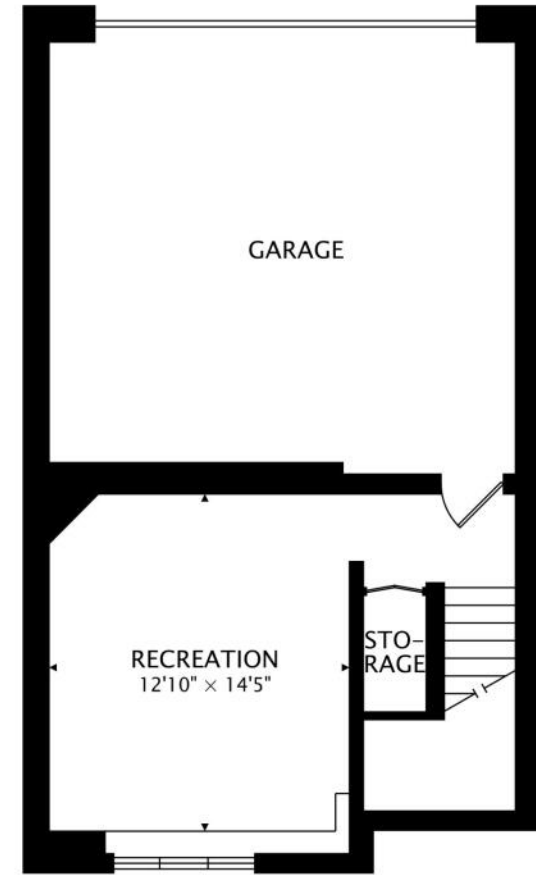
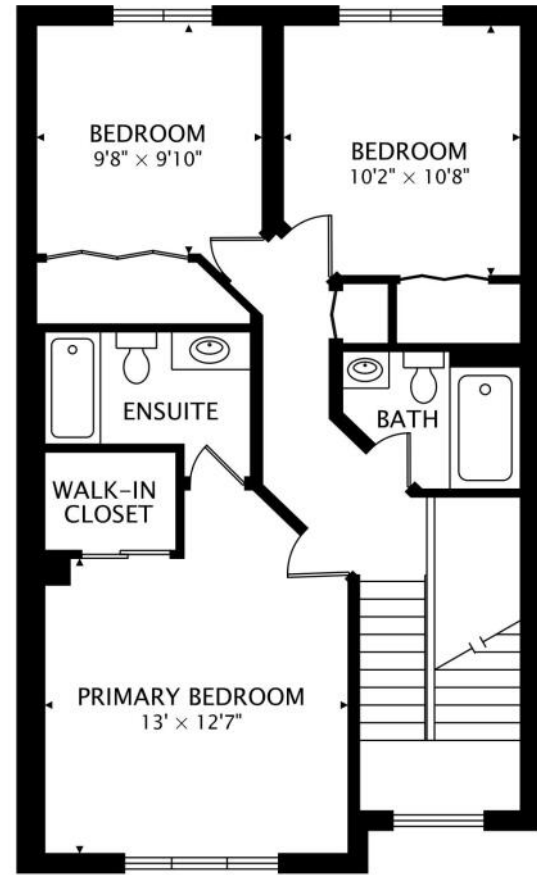
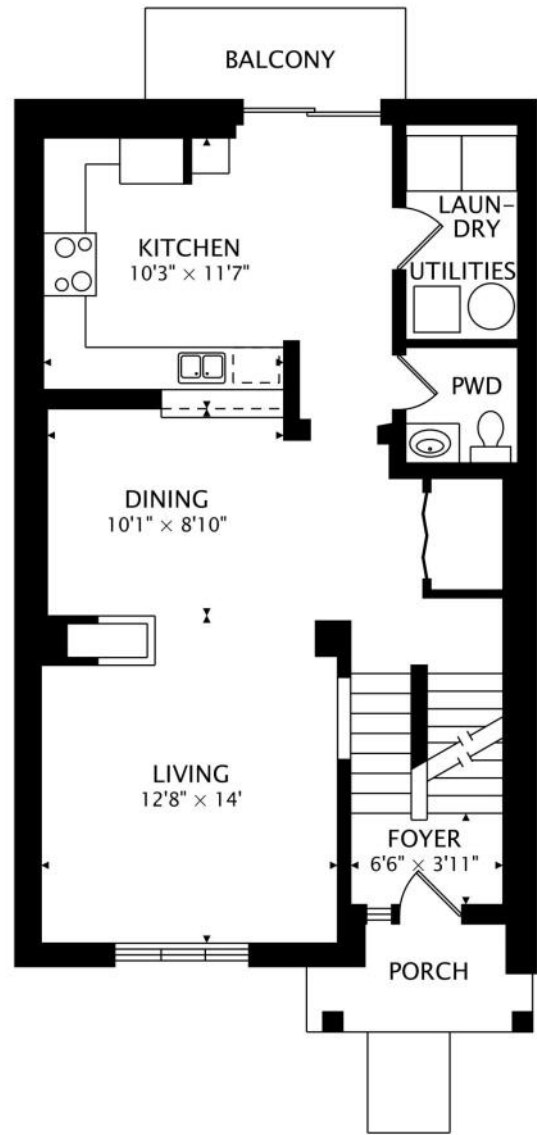
MODERN COMFORT MEETS PRIME LOCATION

This spacious and pristine townhome offers a welcoming open floor plan, ideal for both everyday living and entertaining located just steps from Parkside Park. Upon entering, you'll immediately be impressed by the home's immaculate condition, featuring updates throughout that blend both style and function. Recent upgrades include newer flooring, modern can lighting, a new water heater, and a brand-new HVAC system replaced in 2025. The formal dining room and living room are enhanced by a cozy fireplace, adding warmth and charm to the space. The eat-in kitchen is a chef's dream, with brand-new countertops, freshly painted cabinets, a stylish backsplash, a new sink and faucet, and a modern refrigerator—every detail updated in 2025. The second floor boasts all three spacious bedrooms, providing ample room for relaxation, along with 2 full bathrooms. The family room, located in the lower level, offers additional living space—perfect for movie nights or playtime. This townhome is not only pristine inside but also offers a new roof (installed in 2024) for long-term peace of mind. The attached 2-car garage is freshly painted with clean walls and floors, providing an organized space for all your storage needs. With plenty of storage space and a meticulously maintained interior, this home is in a fantastic community with access to the new Grayslake School. It's just minutes from shopping and surrounded by beautiful single-family homes, offering both convenience and comfort. Don't miss out on this well-cared-for gem.











MARY GIBBS-MOODHE

REAL ESTATE BROKER

DIRECT: (847) 902-3357

MGIBBS@ATPROPERTIES.COM



TERRY WILKOWSKI

REAL ESTATE BROKER

DIRECT: (847) 682-1549

TWILKOWSKI@ATPROPERTIES.COM



@properties®

CHRISTIE'S
INTERNATIONAL REAL ESTATE