

565 SHORELY DRIVE #202
BARRINGTON





ROOM DIMENSIONS

LIVING ROOM : 17' × 12'

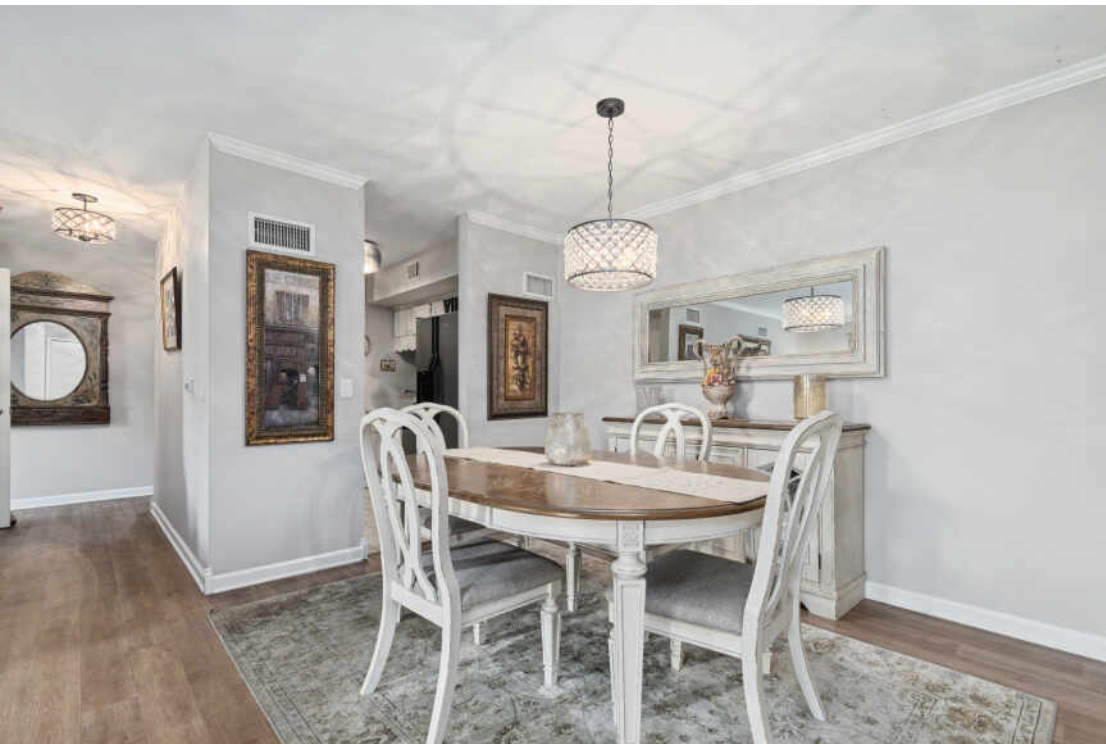
DINING ROOM : 11' × 11'

KITCHEN : 8' × 8'

MASTER BEDROOM : 16' × 14'

STORAGE ROOM : 7' × 5'

Beautiful updated 2nd floor unit in desirable Shorely Woods offers spacious living! Freshly painted, new luxury vinyl flooring & lighting throughout. Enter into the sun filled living room leading out to your balcony. Dining room flows to the galley kitchen with stainless steel appliances & new countertops. There's ample storage in the huge hallway closet/pantry. A large master bedroom with a walk-in closet has direct access to the updated bathroom. The bathroom also has a secondary access from the hallway for your guest. Laundry room located on the same floor. Private storage room located next to unit offers built-in shelving. Convenient to the Village, Metra, Restaurants, Shopping, Citizens Park & Library.







THE VILLAGE OF **BARRINGTON** MAY HAVE THE LARGEST RESIDENTIAL HISTORIC DISTRICT IN THE STATE, BUT IT'S DEFINITELY NOT LIVING IN THE PAST

Many of the beautifully-restored Victorian, Gothic, and Queen Anne homes that line the village's main streets have been repurposed as unique shops and businesses. Meanwhile, homeowners have rehabbed and restored many historic homes back to their former glory with the addition of modern amenities. The village's historic theater opened in 1927 and still operates today.

Barrington also thrives when it comes to recreation. Citizens Park is one of the area's gems, offering wide-open spaces as well as tennis and basketball courts, cross-country ski trails, nature paths, an events pavilion, and a tree house.

The village's downtown center is filled with shoppers, diners, and residents enjoying one of the area's special events, whether it's an art festival, wine walk, or a farmers market. The nearby Barrington Metra station provides a convenient commute to downtown Chicago.

Barrington homes range from Victorians and Colonials to stunning new construction and sprawling mansions with large lots and water views.

[illegible]



LAURA BALISTRERI

847- 809-2770

LAURA@MYREALTYEXPERT.COM



All specifications, features, designs, price, assessments, taxes and materials are subject to change without notice. Depicted floor plans and architectural renderings are only an artist's impression.

