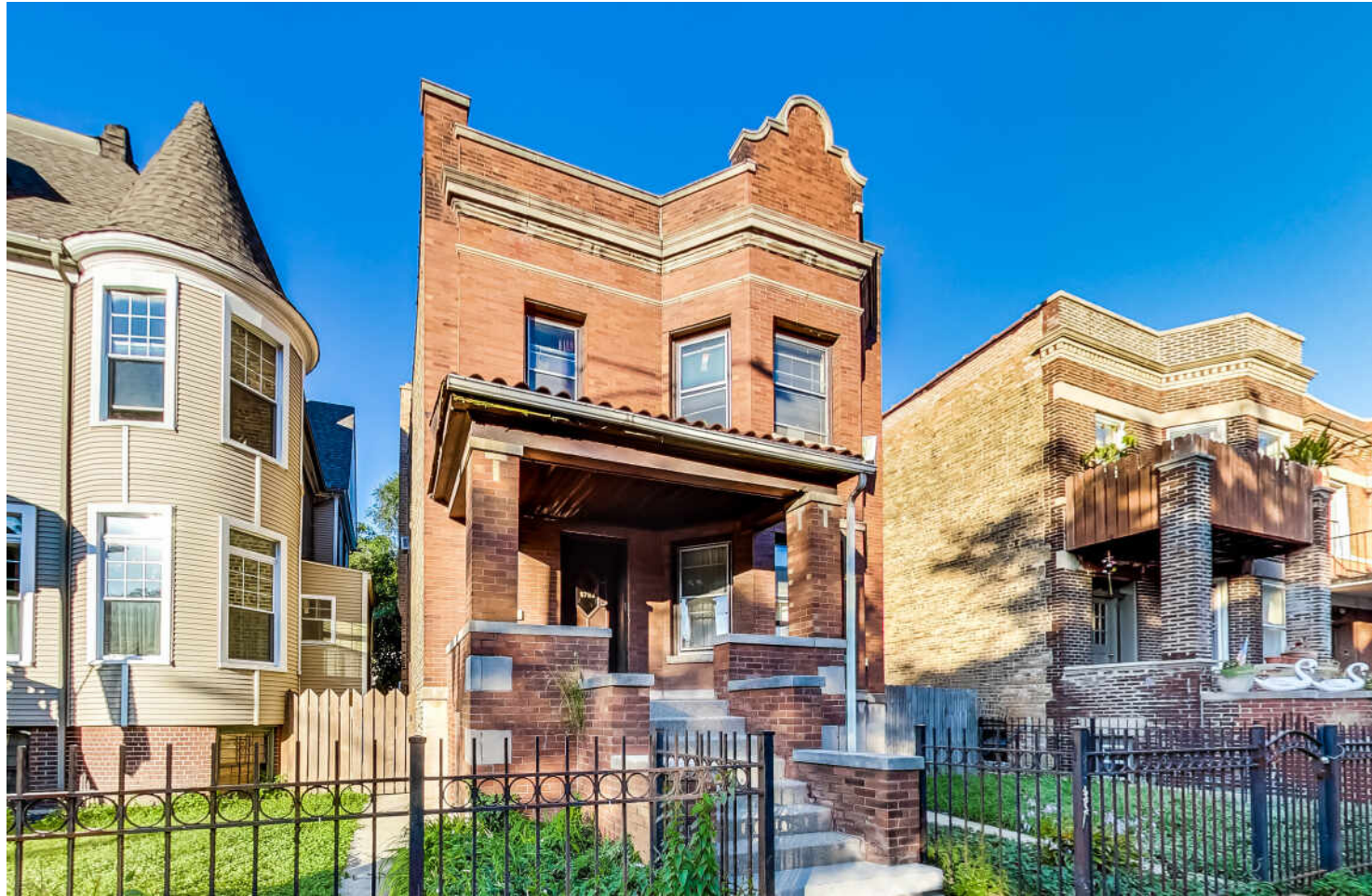
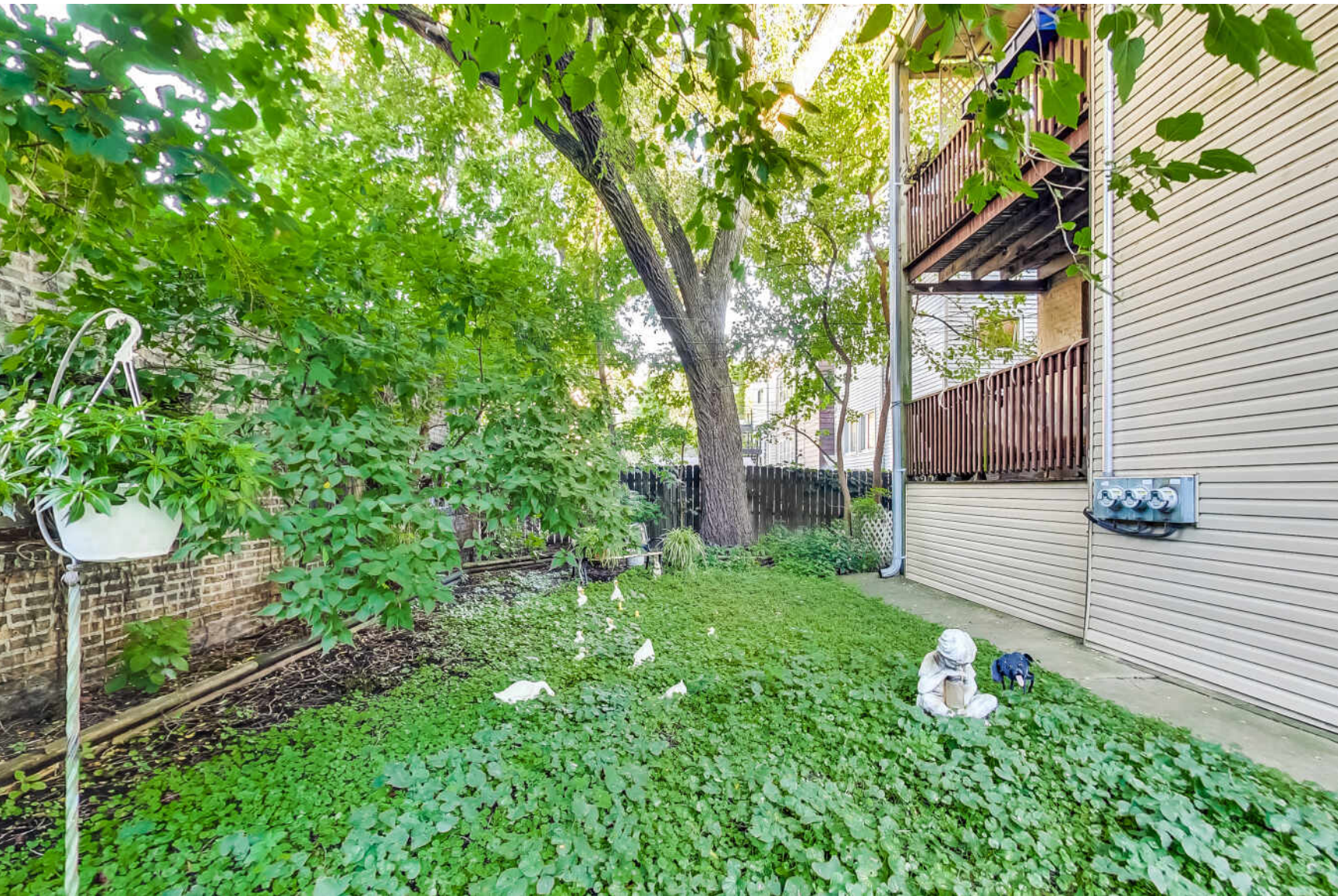


5729 N RIDGE AVENUE
EDGEWATER





ROOM DIMENSIONS

KITCHEN : 12' × 12'

LIVING ROOM : 17' × 13'

DINING ROOM : 15' × 13'

6 BEDROOM

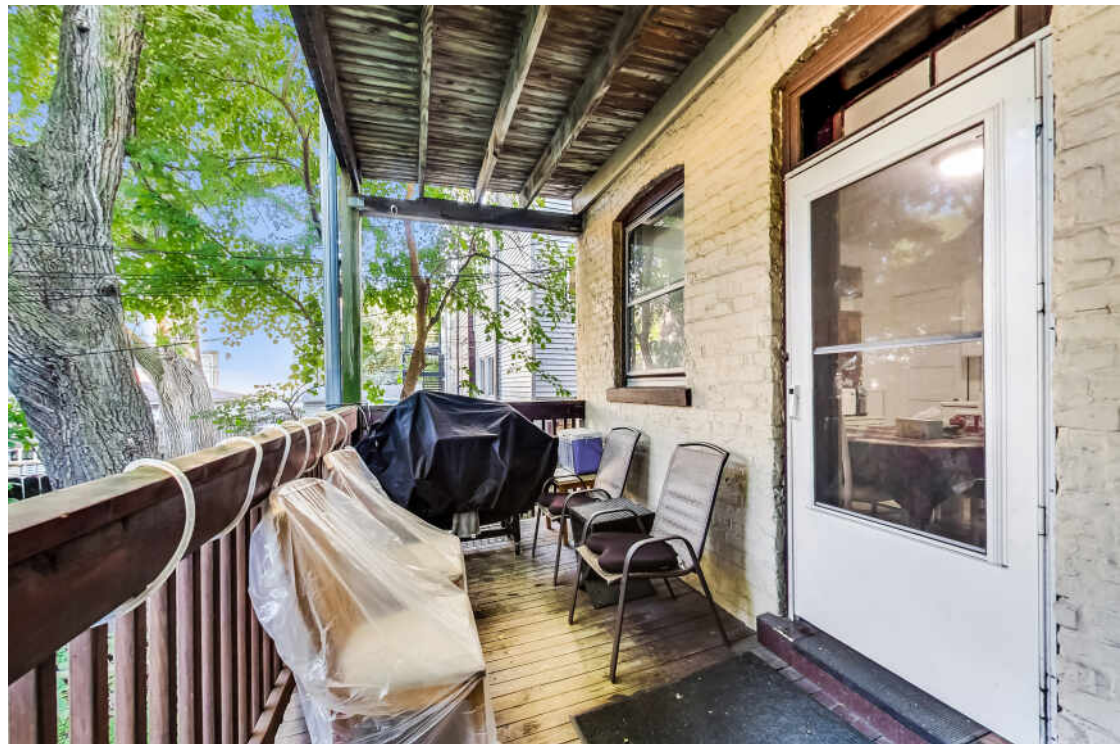
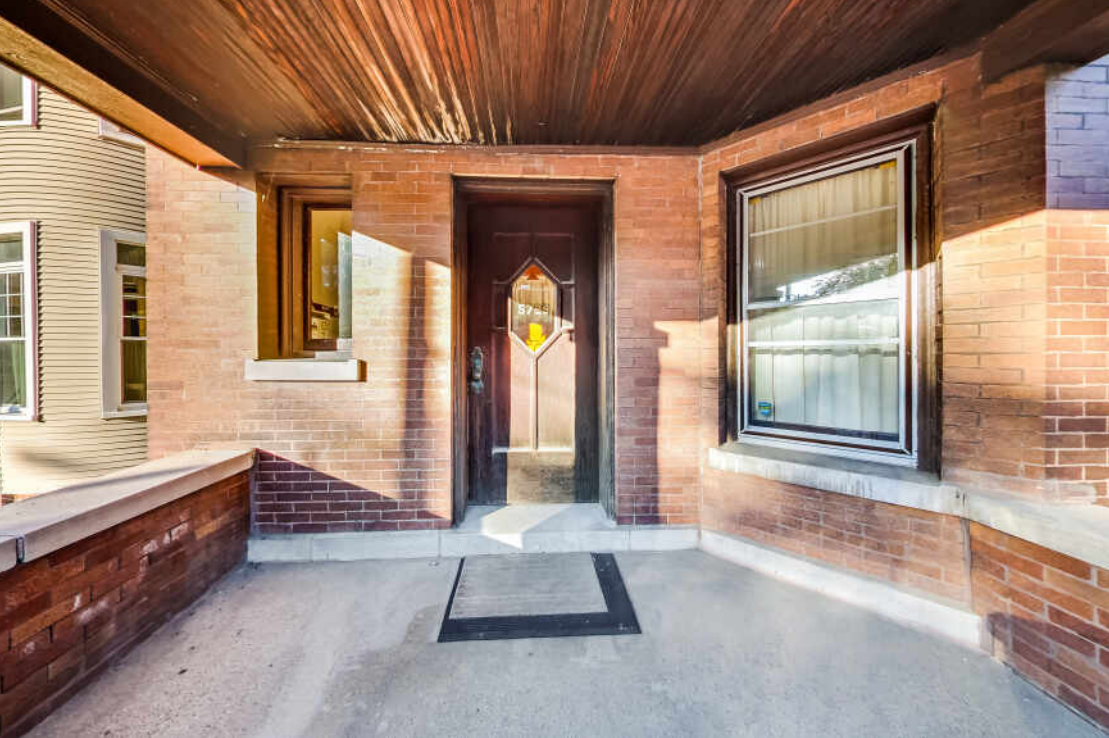
3 BATH

TAXES: 11504.00

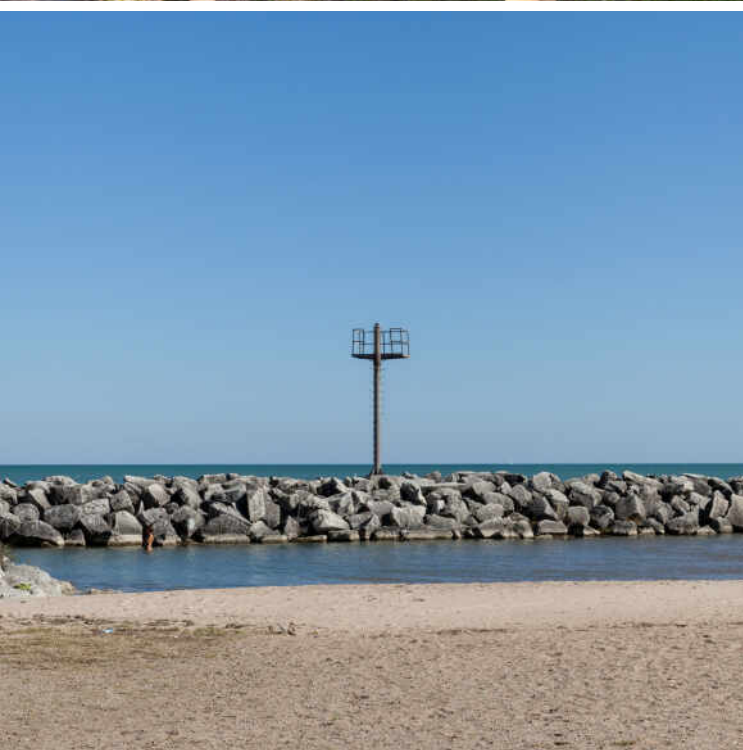
WELL KEPT 2 UNIT, PLUS OWNER UNIT IN GARDEN. ALL EDGEWATER HAS TO OFFER! EASY TO SHOW, AND GREAT TO LIVE IN. 3 CAR GARAGE, TWO, 3 BEDROOM APARTMENTS, PLUS 2 BEDROOM GARDEN. VERY QUIET NEIGHBORHOOD. BIG AND ROOMY WITH GREAT TRANSPORTATION OPTIONS.

2 THREE BEDROOM UNITS, PLUS OWNER STYLE 2 BEDROOM UNIT IN GARDEN. ALL EDGEWATER HAS TO OFFER AND GREAT TO LIVE IN. 3 CAR GARAGE. VERY PEACEFUL, QUIET AND ACTIVE NEIGHBORHOOD. BIG AND ROOMY WITH A 3 CAR GARAGE AND GREAT TRANSPORTATION OPTIONS.

- 3 Bedroom 1 Bath
- 3 bedroom 1 Bath
- 2 Bedroom 1 Bath (Garden)
- Owner style unit in Garden
- 3 car garage
- Fantastic transportation
- Live, Work AND play







LAKESIDE LIVING NEVER GOES OUT OF STYLE IN **EDGEWATER**.

The neighborhood draws residents with its spectacular lake views, large beaches, thriving theater scene and restaurants with cuisines from around the world. Edgewater also boasts its fair share of antique shops, cafes and parks.

Encompassing a number of neighborhoods between Uptown and Rogers Park, the neighborhood offers convenience and proximity to downtown Chicago and nearby Loyola University. The community is easily accessible by Lake Shore Drive and public transportation, including the CTA Red Line and Metra's Union Pacific North Line.

Edgewater retains some of its early posh glamour with stately mansions, Neo-Gothic churches and the iconic 1920s pink Edgewater Beach Apartments. The Bryn Mawr Historic District features opulent mansions and vintage lamp posts. Edgewater housing choices also include high-rise condominiums, vintage three-flats, greystones and new-construction single-family homes.

[illegible]



ERICH MUELLNER

847.361.7100

ERICHMUELLNER@ATPROPERTIES.COM

I AM NEVER TOO BUSY FOR YOUR REFERRALS!



CHRISTIE'S
INTERNATIONAL REAL ESTATE