

5810 OAKWOOD DRIVE #5M
LISLE



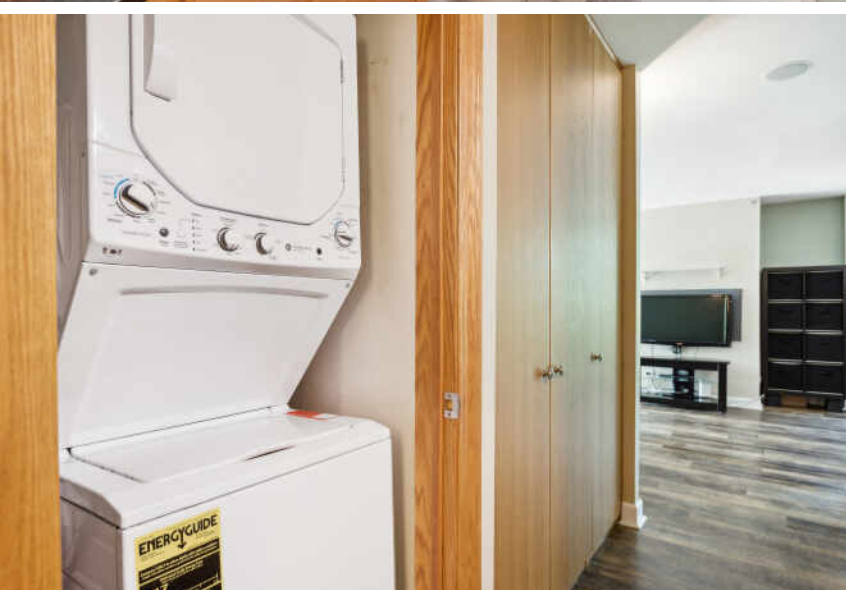
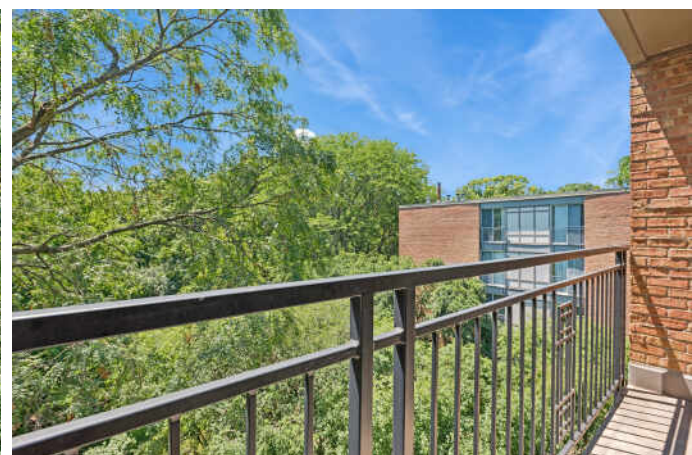
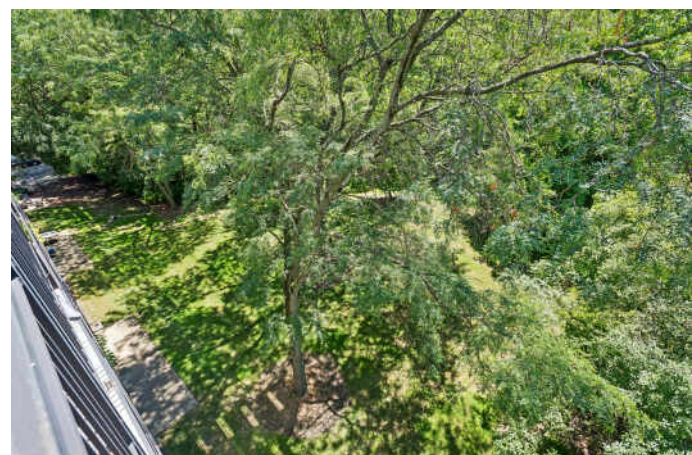


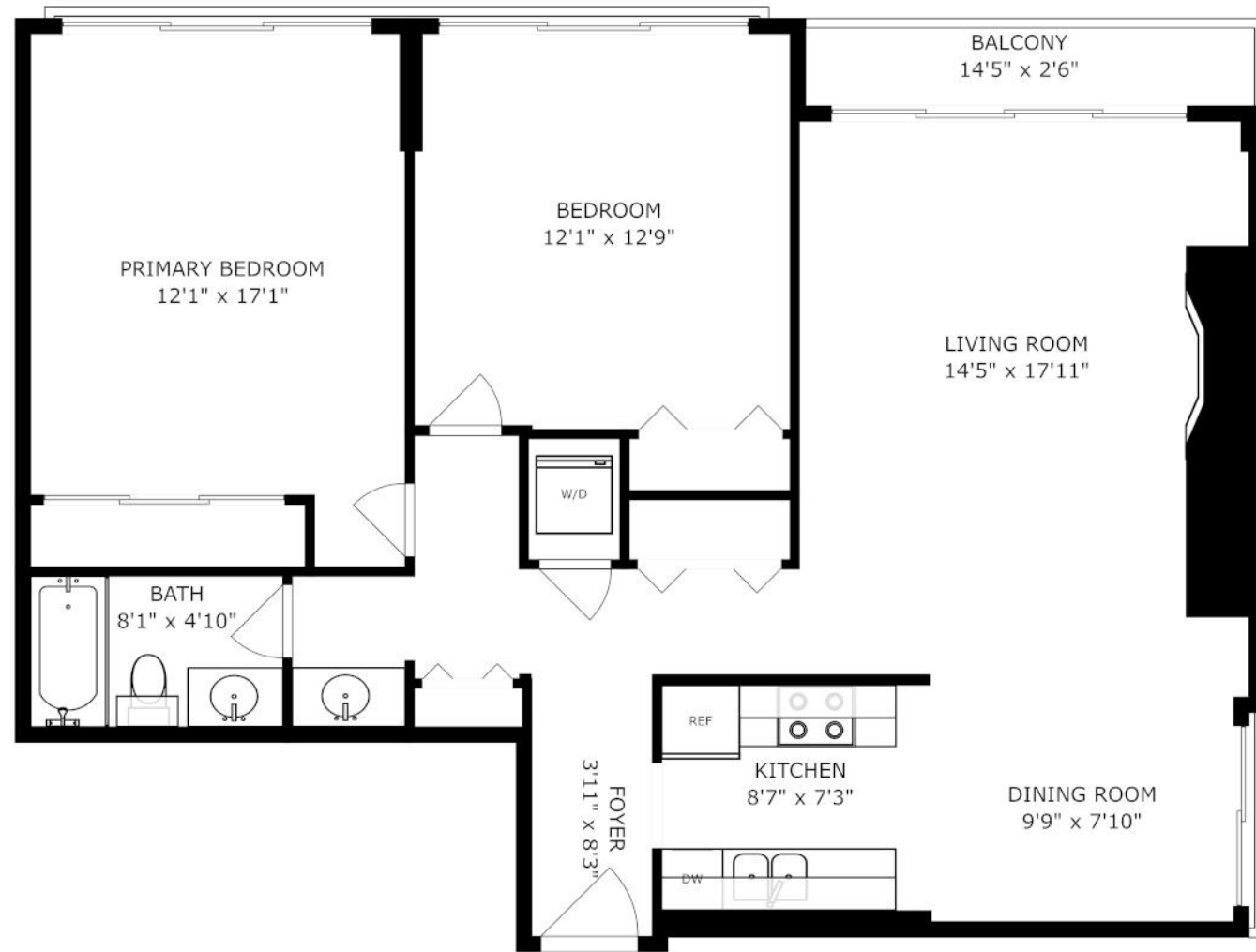
2 BEDROOM
1 BATH
TAXES: \$4,245
ASSESSMENTS: \$423 / MONTH

Experience the breathtaking and unobstructed views of nature from this luxurious corner unit penthouse. Located on the top floor, this exquisite home features 2 bedrooms, 1.25 baths, and the convenience of 2 assigned parking spots right in front of the lobby. The condo has spacious 42" cabinets, stainless steel appliances, and granite countertops. Cozy up by the wood-burning fireplace while you appreciate the freshly painted interior and new luxury vinyl plank flooring (2023). The home is also equipped with a new stackable washer and dryer unit (2023), new furnace (2023), and floor-to-ceiling sliding glass doors in every room that flood the space with natural light. Appreciate resort-style living year-round while enjoying all the amenities that Four Lakes has to offer, including swimming pools, a ski hill, tennis courts, volleyball courts, walking and jogging trails, boat rentals, and a frisbee golf course. Within the complex, you'll be in walking distance to the bar & restaurant, convenience store, and gym. Just minutes from I355, I88, the Metra train station, and shopping and entertainment.









SIZES AND DIMENSIONS ARE APPROXIMATE, ACTUAL MAY VARY.



THEY DON'T CALL **LISLE** THE "ARBORETUM CITY" FOR NOTHING.

Naturally it's home to the famed Morton Arboretum, but that's not where the trail ends here. In fact, the community is also home to the Jurica-Suchy Nature Museum, the Museums at Lisle Station Park, and the award-winning PrairieWalk Pond.

The two-acre PrairieWalk Pond includes scenic overlooks, various paths, a play area, and wetlands. The nature park includes more than 100 varieties of native plants and wildlife including cranes, ducks, geese, turtles, frogs, fish, butterflies, and dragonflies.

The Garden Walk connects the park to downtown Main Street, which features nature-inspired colorful streetscapes and a dramatic fountain. Beyond the view, residents and visitors have a variety of local boutiques and eateries to enjoy.

It's no wonder Lisle was ranked by Money magazine as one of the 100 Best Places to Live. The community hosts several popular festivals including Lisle Cruise Nights when Main Street transforms into a massive block party throughout the summer. The village also hosts the popular Eyes to the Skies Hot Air Balloon Festival and Depot Days, which includes tours of the community's historic museums and working blacksmith shop. Located just off the Ronald Reagan Memorial Tollway, Lisle has a Metra station providing direct access to downtown Chicago.



NOTES _____



SHELLEY BRZOZOWSKI-O'GRADY

(847) 772-4549

630-530-0900

SHELLEY@ATPROPERTIES.COM