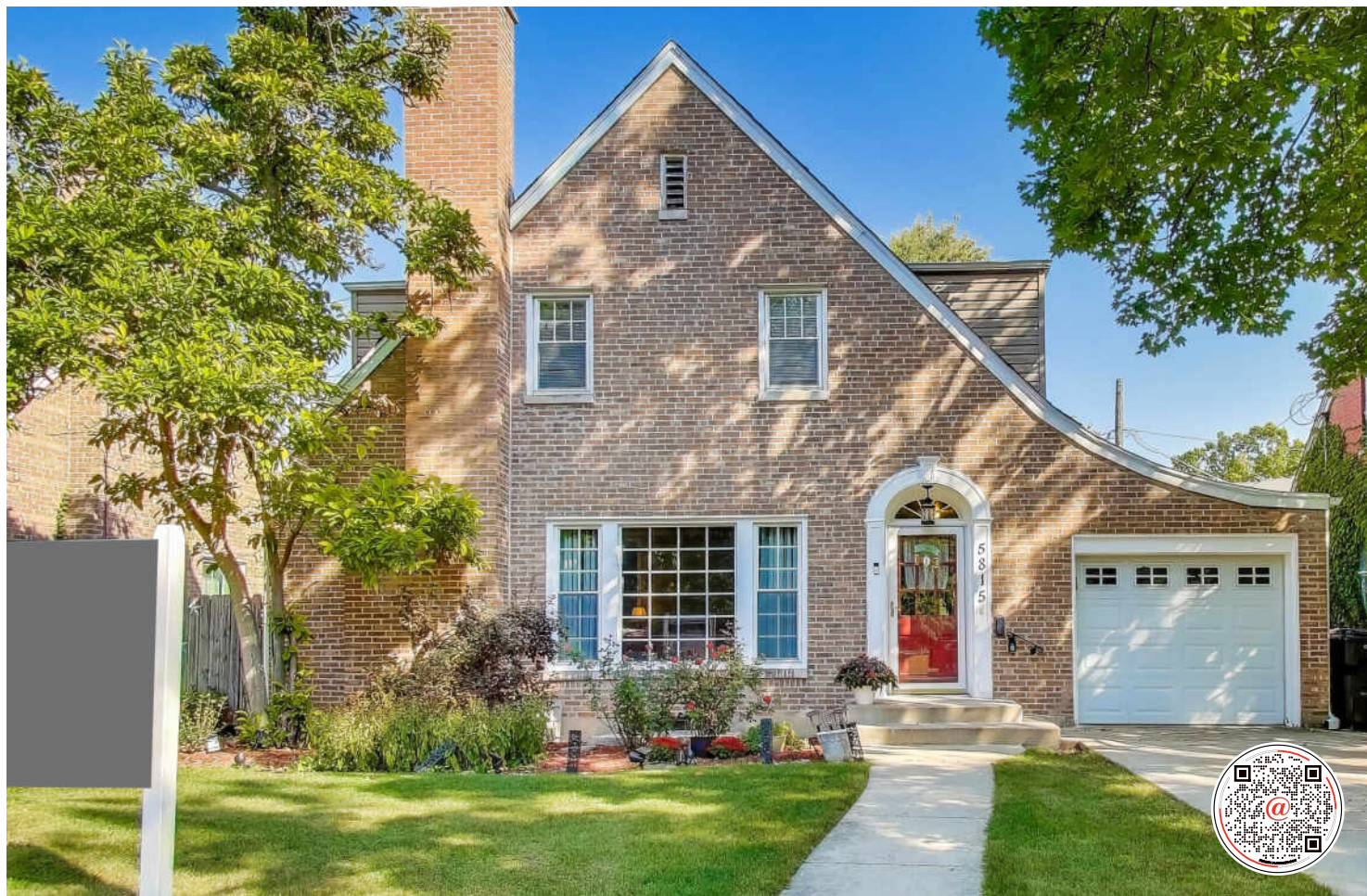


5815 N NICKERSON AVENUE
OLD NORWOOD PARK





ROOM DIMENSIONS

LIVING ROOM : 20' × 13'

DINING ROOM : 11' × 12'

KITCHEN : 15' × 9'

PRIMARY BEDROOM : 16' × 13'

SECOND BEDROOM : 12' × 10'

THIRD BEDROOM : 17' × 11'

ENCLOSED PATIO : 10' × 6'

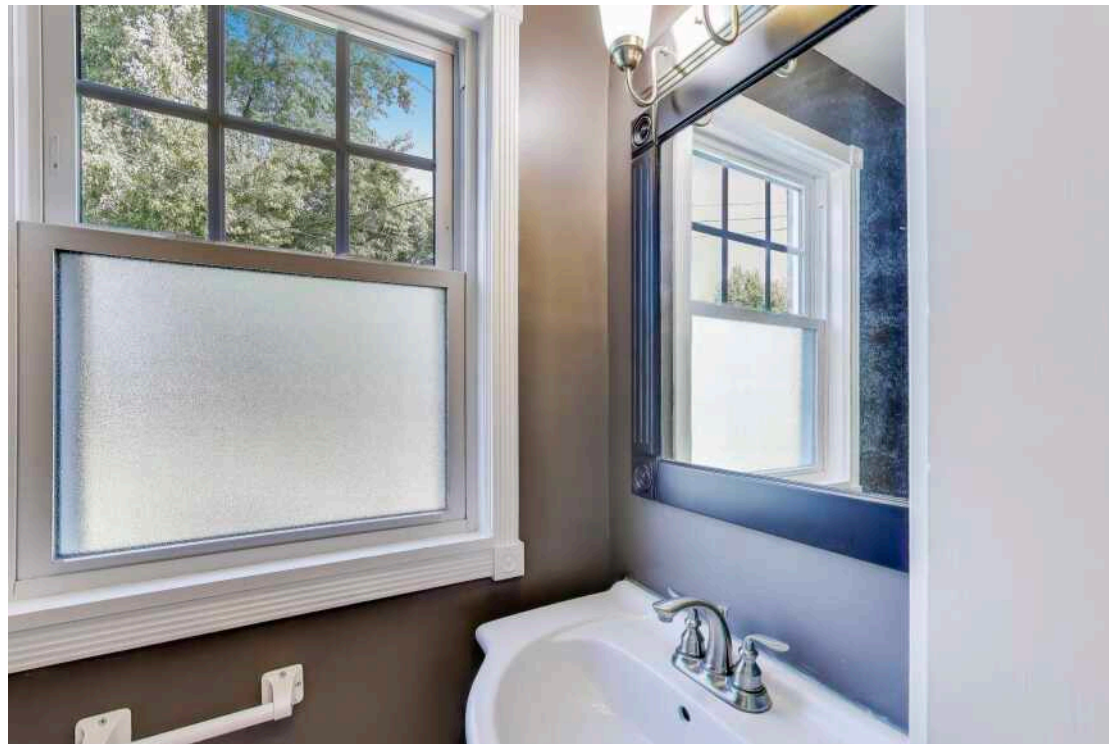
3 BEDROOM

1.1 BATH

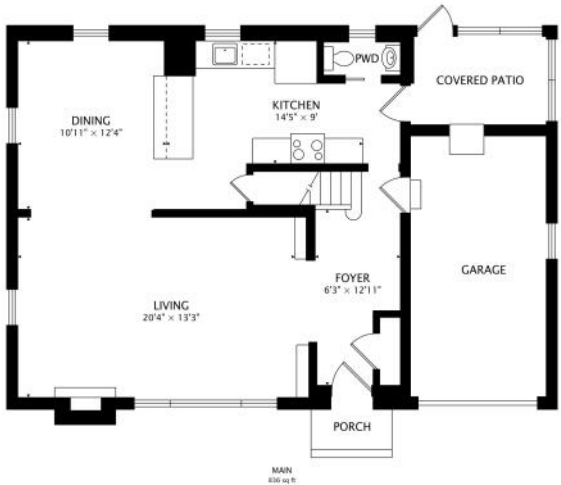
TAXES: \$8,311.67

Welcome to this charming 3-bedroom, 1.5-bathroom Cape Cod, nestled in the heart of Chicago's highly desirable Old Norwood Park neighborhood. Large 48x140ft lot. This beautiful single-family home seamlessly blends classic charm with modern comforts. Home features a well-designed floor plan that maximizes living space. The large living/dining room is anchored by a traditional fireplace, perfect for gathering with family on a quiet evening. Hardwood floors throughout first floor. Open, updated kitchen with Amish cabinets, granite countertops and beautiful backsplash. First floor includes half bathroom and quaint three seasons room overlooking the beautiful backyard. Three generous sized bedrooms upstairs with tons of closet space, new carpet and includes full, spacious bath. Full unfinished basement ready for your designer needs. 1 car attached garage and front driveway. Located in a quiet, tree-lined section of Norwood Park, this home is surrounded by historic architecture and a strong community atmosphere. Its proximity to local schools, parks, and dining options adds to its appeal. This is a rare opportunity to own a piece of a truly special Chicago neighborhood.











EDITH SCHELL

773.593.9687

847-692-5522

EDITHSCHELL@ATPROPERTIES.COM

WWW.EDITHSCHELLREALTY.COM



All specifications, features, designs, price, assessments, taxes and materials are subject to change without notice. Depicted floor plans and architectural renderings are only an artist's impression.

