

5847 GOLDENEYE DRIVE
LONG GROVE, IL 60047





ROOM DIMENSIONS

LIVING ROOM : 22' x 13'

DINING ROOM : 14' x 13'

KITCHEN : 25' x 15'

GREAT ROOM : 23' x 20'

LAUNDRY ROOM : 12' x 6'

PRIMARY BEDROOM : 18' x 15'

2ND BEDROOM : 17' x 13'

3RD BEDROOM : 16' x 12'

4TH BEDROOM : 15' x 10'

5TH BEDROOM : 12' x 10'

RECREATION ROOM : 25' x 17'

GAME ROOM : 19' x 16'

EXERCISE ROOM : 16' x 10'

BONUS ROOM : 15' x 10'

STORAGE ROOM : 15' x 15'

5 BEDROOM

4 BATH

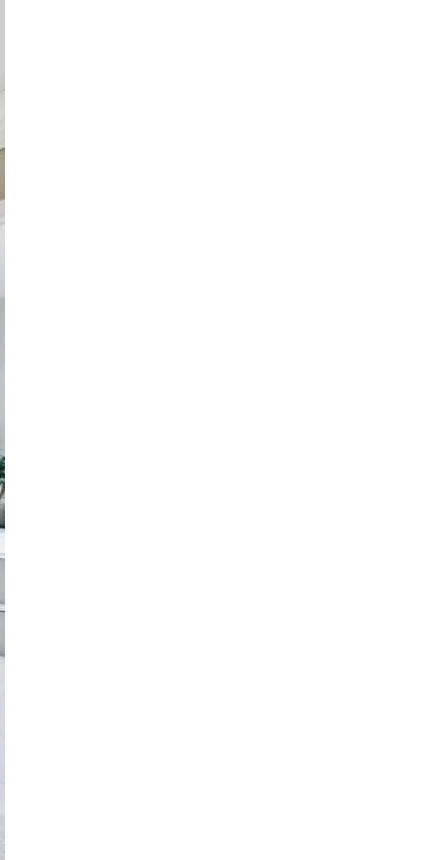
TAXES: SEE LISTING

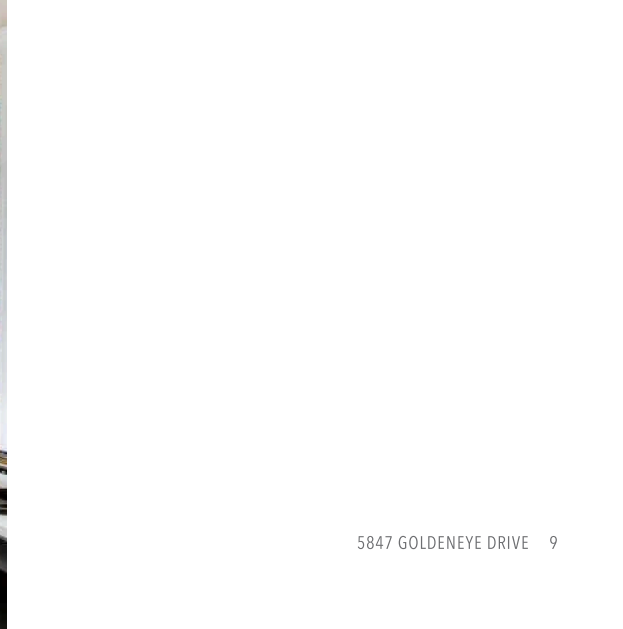
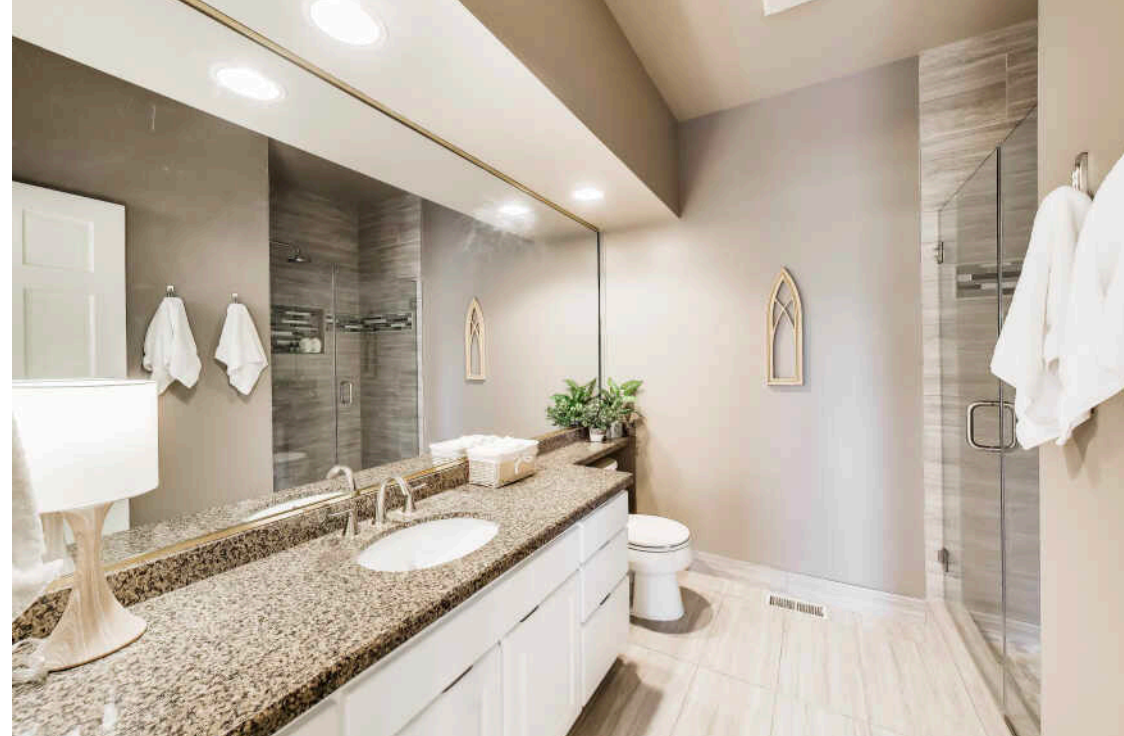
ASSESSMENTS: \$1,465 ANNUAL

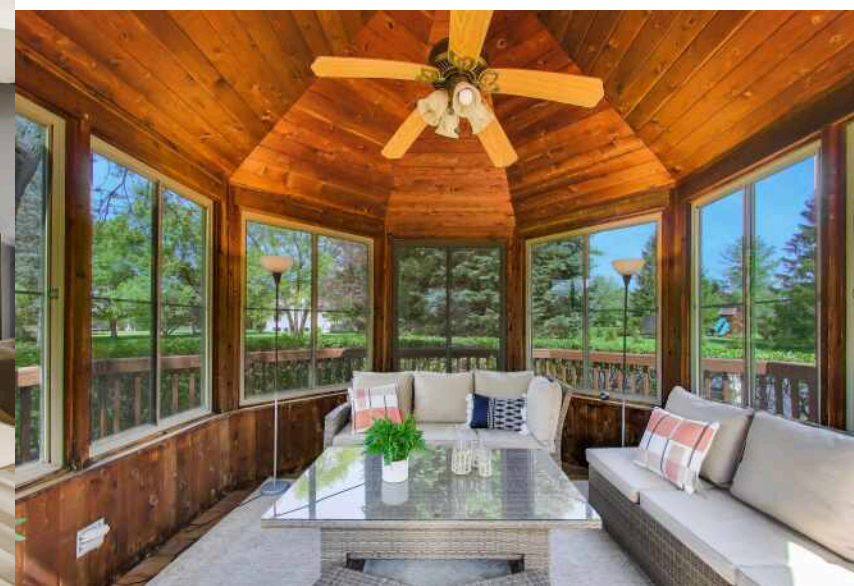
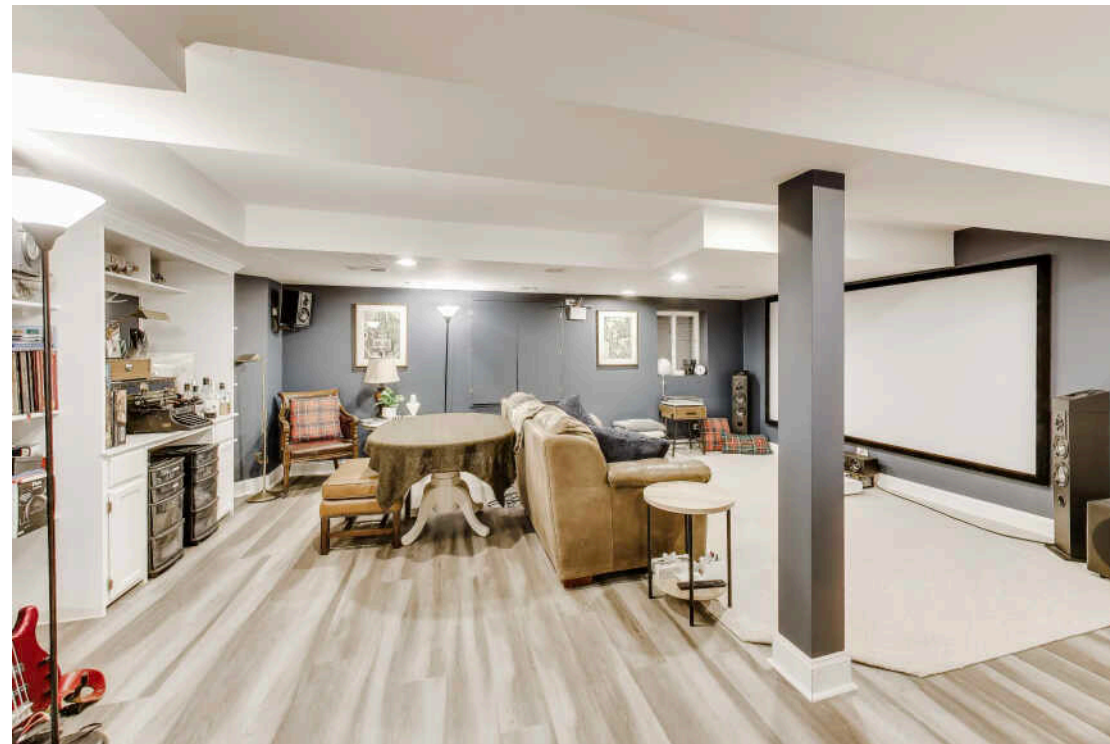
EXCEPTIONAL RESIDENCE IN HERON'S LANDING

Welcome to this exceptional Heron's Landing residence perfectly situated on 1.1 rolling acres at the end of a quiet cul-de-sac in sought-after Long Grove. Offering over 4,250 square feet of finished above-grade living space, this beautifully maintained brick home seamlessly blends timeless elegance, modern updates, and functional family living. A grand foyer with soaring ceilings and gleaming hardwood floors opens to a layout designed for both everyday comfort and gracious entertaining. The dramatic family room features cathedral ceilings, skylights, custom built-ins, a floor-to-ceiling brick fireplace and wet-bar with a pass-through to the kitchen. The spacious kitchen is appointed with granite countertops, a center island with cooktop, breakfast bar seating, a Sub-Zero refrigerator, KitchenAid double ovens, dishwasher, and an inviting eating area for casual dining. The main floor 5th bedroom/office is adjacent to a full bath and offers excellent flexibility for guests, related living, or work-from-home needs. For more formal occasions, there's a separate dining room, currently repurposed as a wonderful library, and formal living room, currently used as a first-floor play area. Upstairs, the luxurious primary suite showcases expansive backyard views, a tray ceiling and an oversized dressing area with impressive walk-in closet and storage. Hidden away is a private sitting room/office with built-in bookshelves and charming window seat. The updated spa-inspired bath includes dual granite vanities, a soaking tub, skylight, and custom tile shower. Three additional bedrooms with dual closets share an updated hall bath with custom finishes and skylight. The finished basement expands the home's entertaining possibilities with a large recreation room, game area, surround sound wiring, and an additional full bath. Outdoor living is equally impressive with an expansive deck, enclosed gazebo, lush perennial landscaping, and a sprawling backyard ideal for entertaining, play, or quiet relaxation. Recent seller improvements totaling well over \$90,000 include premium kitchen appliances, mudroom renovation, Andersen storm doors and garage windows, updated electrical panel, smart home features, deck restoration, landscaping enhancements and more.











LONG GROVE IS A CHARMING STEP BACK IN TIME, WITH ITS HISTORIC COVERED BRIDGE, PRE-CIVIL WAR BUILDINGS, AND COBBLESTONE WALKWAYS.

Visitors and residents alike enjoy Long Grove’s historic downtown with independently owned shops and restaurants housed in historic homes and buildings that date back to the 1800s. Shoppers will find friendly merchants selling unique gifts, baked goods, and wine.

Strict building ordinances ensure the village retains its country charm. In fact, a village ordinance in 1960 made Long Grove the first historic district created in Illinois.

In addition to its charming downtown shops, Long Grove’s Historic Village is an ever-popular attraction, with annual chocolate, strawberry, and apple festivals.

Housing in Long Grove includes single-family homes with large lots, mature trees, and beautiful landscaping. Neighborhoods are situated on winding roads with wide-open spaces.

The village is accessible via the Tri-State Tollway and several state highways, including Route 53.



MICHAEL CELL, BROKER, CFSP, ABR, GRI, SRS

(847) 322-4402

MICHAELCELL@ATPROPERTIES.COM

CELLYOURHOUSE.COM

WORKING BY REFERRAL SINCE 2001 TO SERVE YOU BETTER!