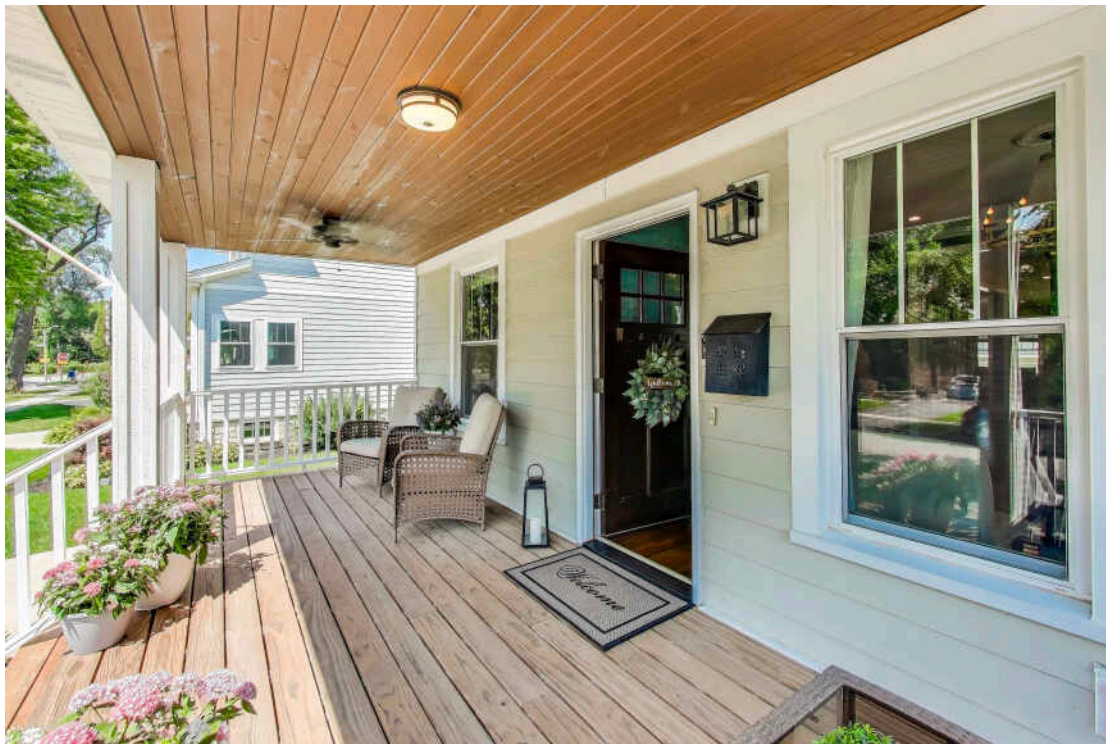


585 S BRYAN STREET  
ELMHURST







#### ROOM DIMENSIONS

LIVING ROOM : 17' × 13'

FAMILY ROOM : 18' × 14'

DINING ROOM : 13' × 9'

KITCHEN : 18' × 9'

BREAKFAST ROOM : 14' × 10'

FIFTH BEDROOM/OFFICE : 13' × 10'

MUD ROOM : 9' × 5'

PRIMARY BEDROOM : 24' × 14'

SECOND BEDROOM : 14' × 12'

THIRD BEDROOM : 12' × 11'

FOURTH BEDROOM : 11' × 9'

LAUNDRY : 7' × 7'

REC ROOM : 42' × 21'

THEATER ROOM : 22' × 12'

STORAGE ROOM : 9' × 7'

5 BEDROOM

3 BATH

TAXES: \$15,136

## PROPERTY INFORMATION

Style, space, and sophistication in a location you'll love! This beautifully renovated 4 bed/3 bath home underwent a full gut renovation and thoughtful addition in 2019, delivering the best of modern living without the new construction price tag.

The spacious layout includes a main-floor office or 5th bedroom with an adjacent full bath, an everyday essential mudroom, and a finished basement complete with a theater room, perfect for fabulous movie nights.

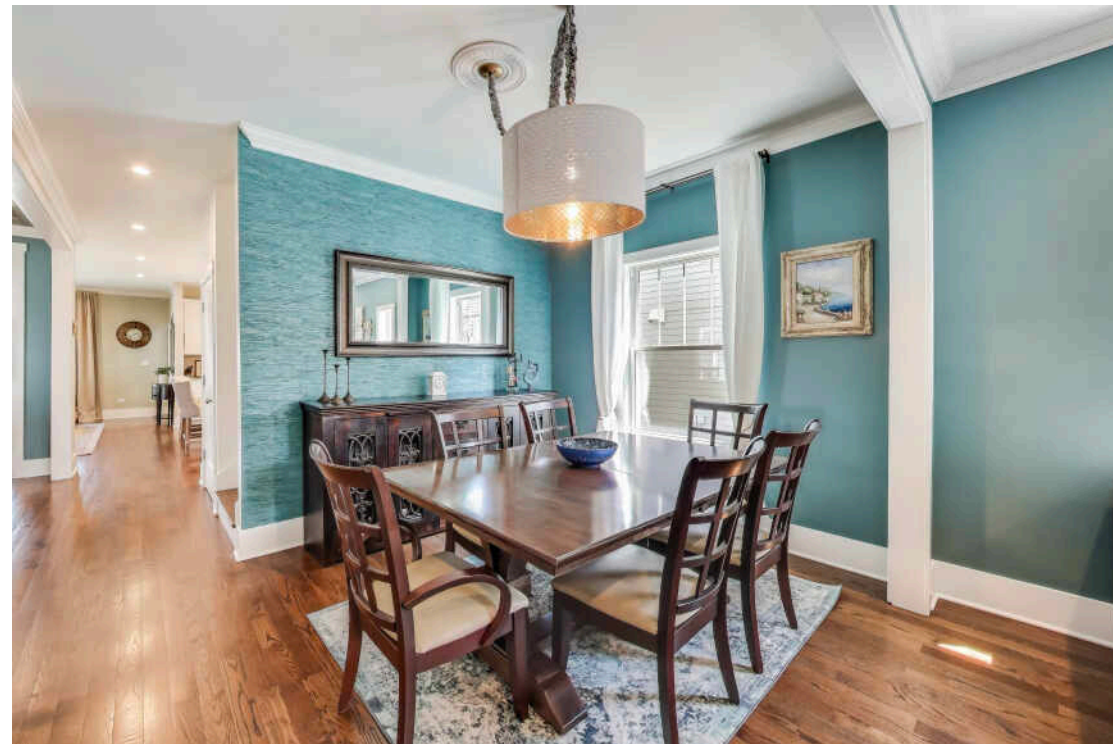
The open-concept kitchen is a true highlight, featuring a large center island, sleek quartz countertops, and abundant cabinetry. It flows seamlessly into the family and breakfast rooms, ideal for both daily living and effortless entertaining.

Upstairs, the generous primary suite offers a peaceful escape with a spa-like bath and a walk-in closet plus 3 more bedrooms, some with custom closets.

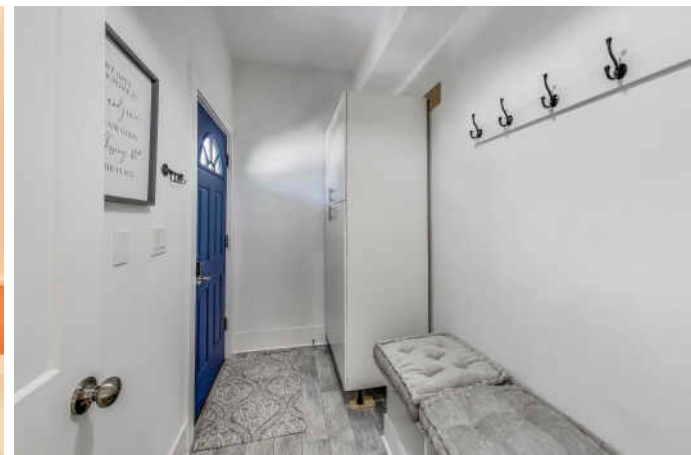
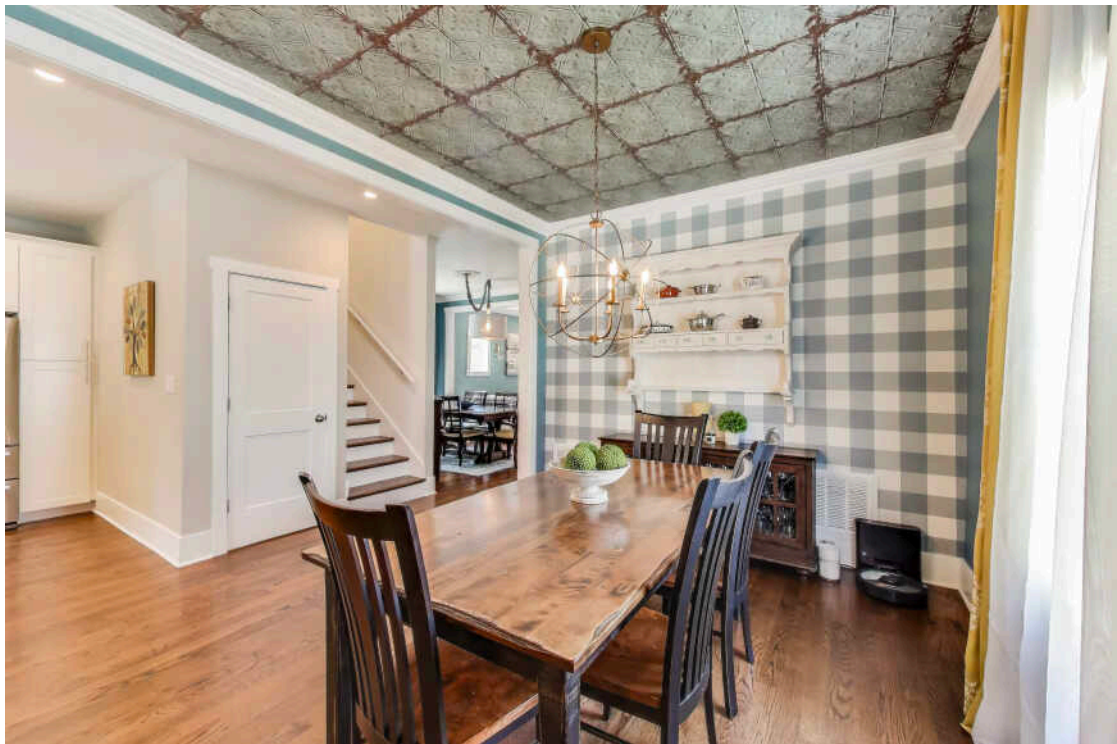
Step outside to enjoy a stamped concrete patio, contemporary fencing, and lush landscaping...perfect for gatherings or quiet evenings under the stars. Located in the highly sought-after Lincoln School district, just blocks from the Prairie Path, local restaurants, coffee shops, and more. Truly turnkey...nothing to do but move in and enjoy!

- Commuters will love the convenience of the Metra train offering a multitude of both express and local options...approximately a 30-minute trip to Ogilvie Transportation Center
- O'Hare and Midway Airports are easily reached via nearby highway access
- This move-in ready home is in a great location walking distance to award-winning Lincoln Elementary....and Prairie Path too

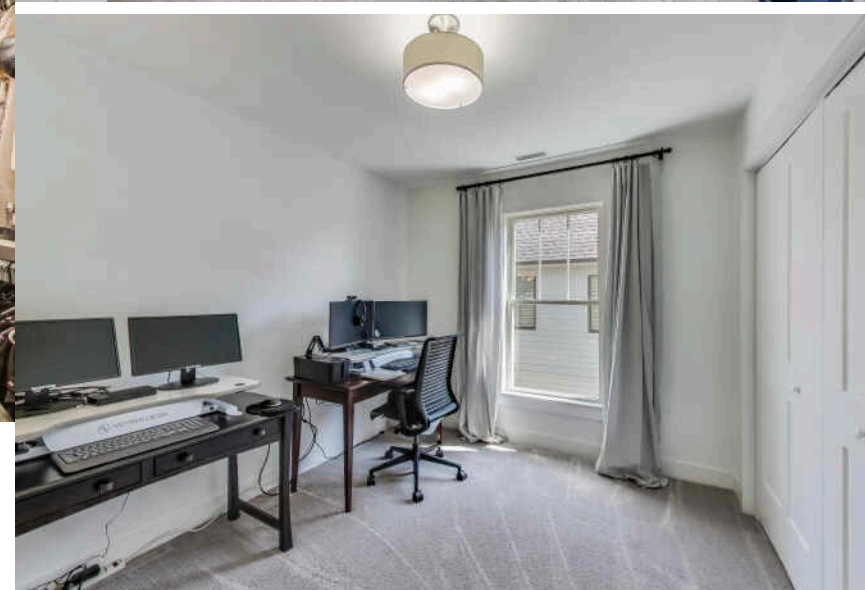
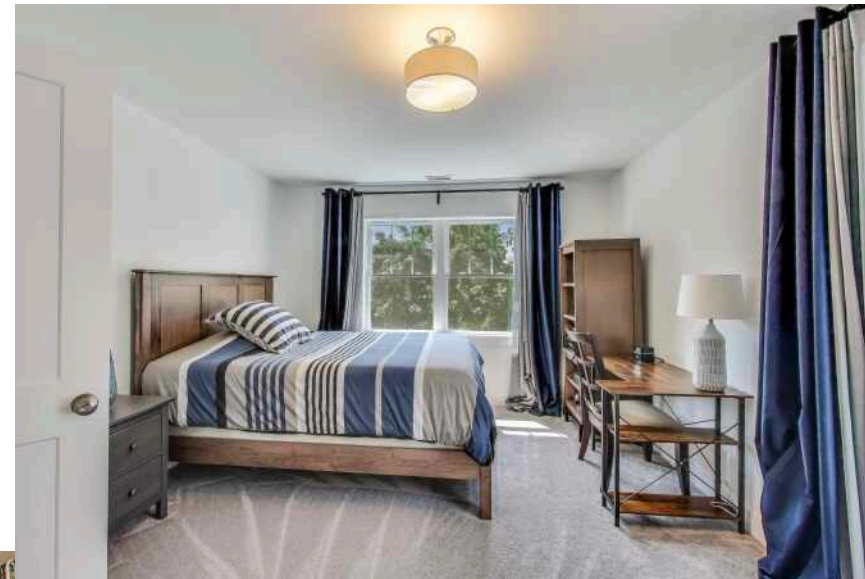




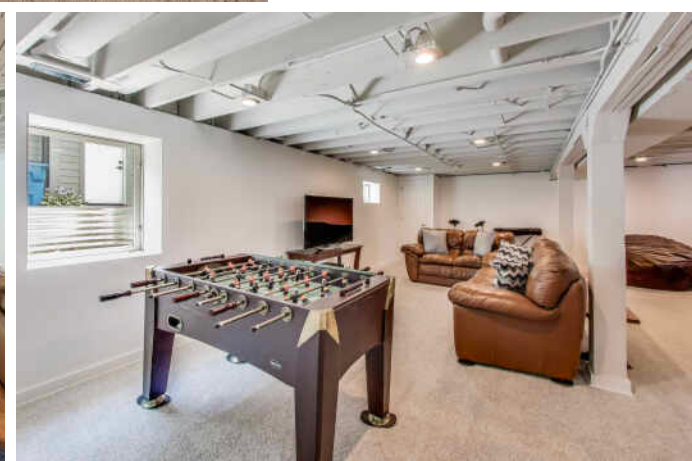
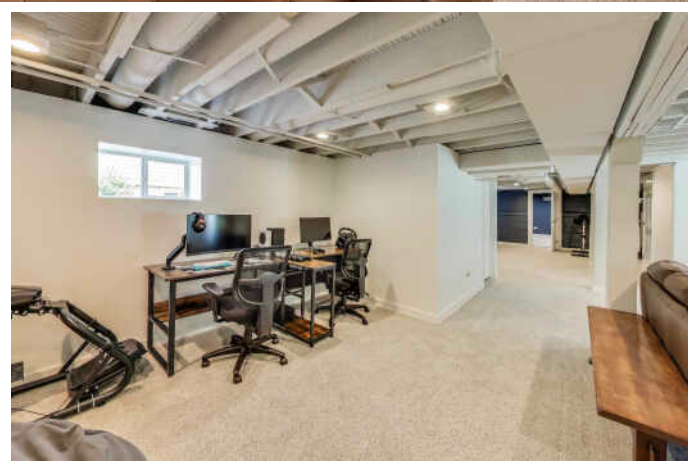
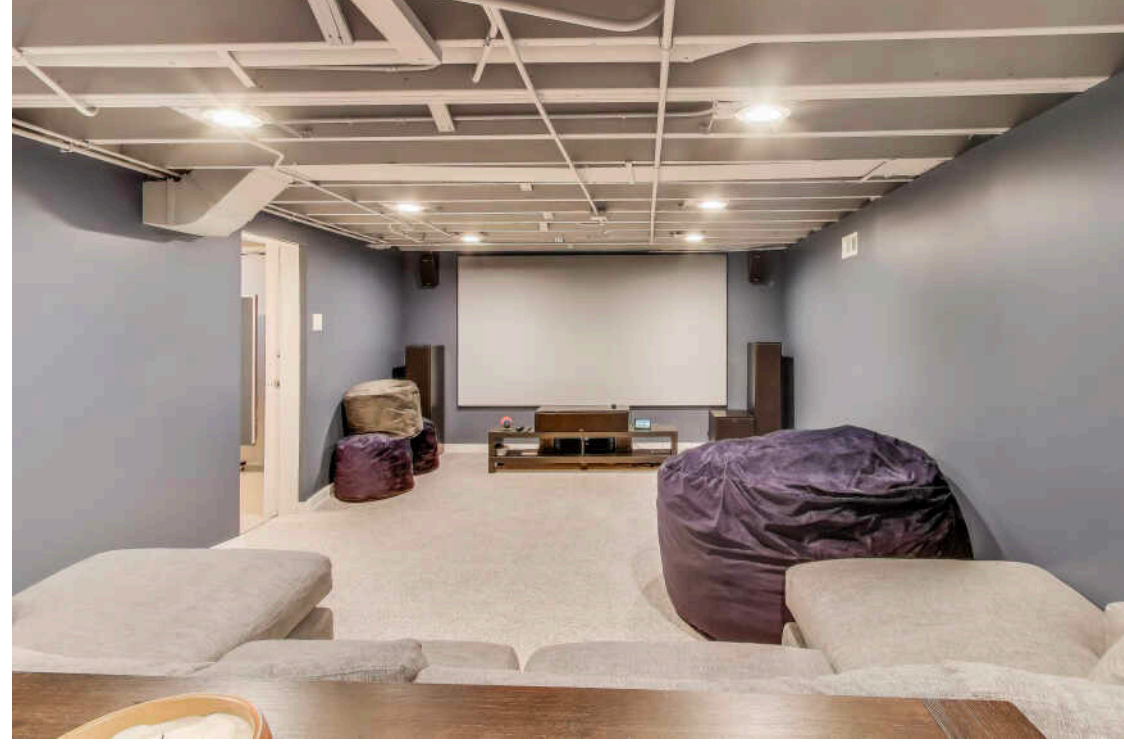




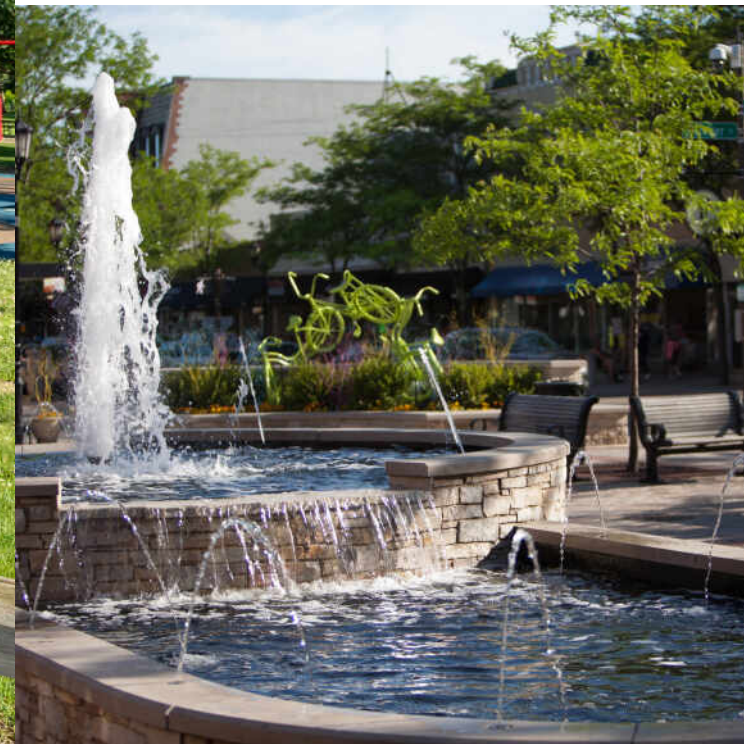
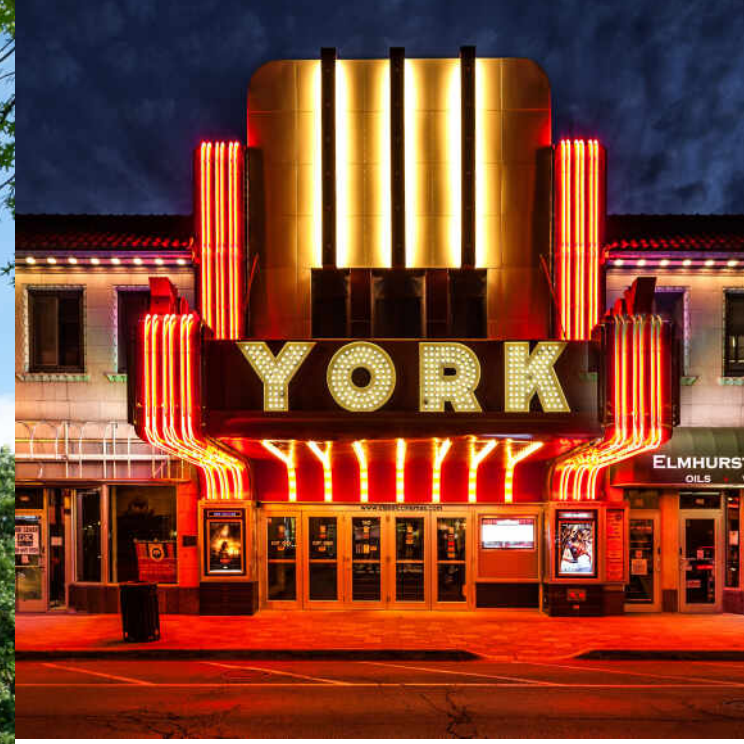












## ELMHURST IS A VIBRANT COMMUNITY WITH A WEALTH OF SHOPS, RESTAURANTS, AND ARTS AND CULTURE.

Elmhurst's award-winning park district maintains nearly 30 parks as well as trails, playgrounds, and athletic facilities. At the center of town is Wilder Park, where locals will also find the community's public library, Wilder Mansion, the Wilder Park Conservatory, and the Elmhurst Art Museum. The museum has been named the "Best Suburban Art Museum in Chicago" by *Chicago* magazine and is adjacent to the McCormick House, a rare single-family home designed by Mies van der Rohe.

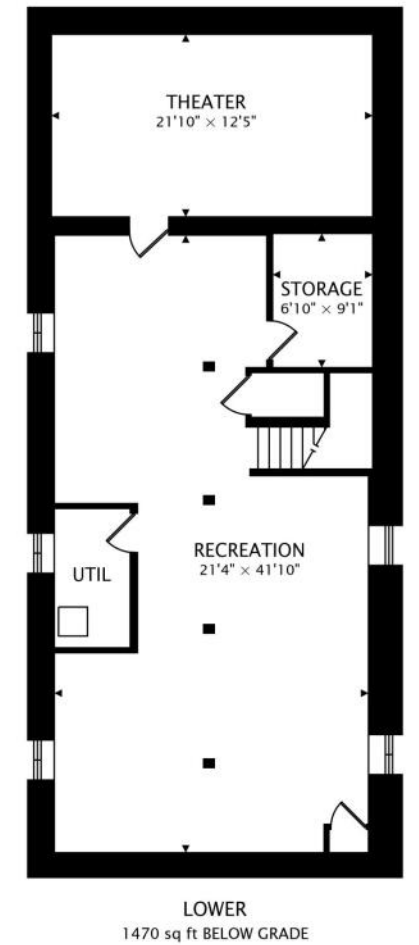
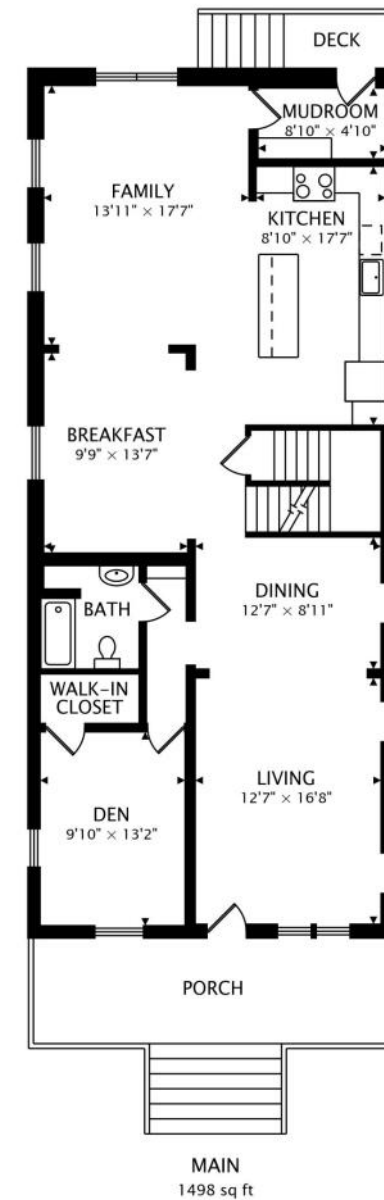
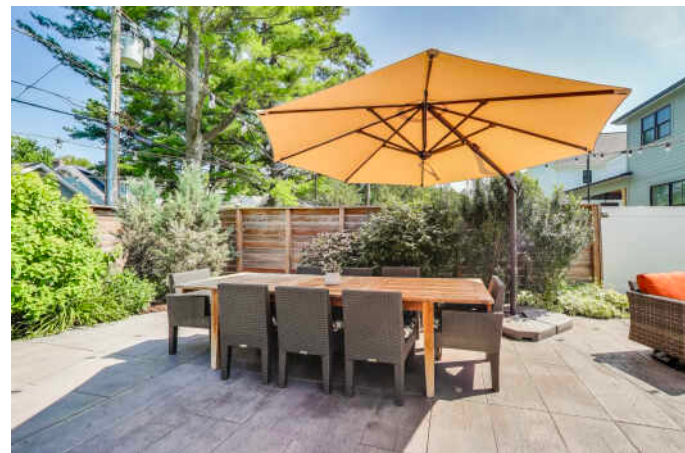
Elmhurst is also home to the Elmhurst History Museum, Elmhurst Symphony Orchestra, GreenMan Theatre Troupe, Elmhurst Choral Union, and Elmhurst Children's Theatre.

In addition to its many cultural offerings, the city is known for its bustling shopping and dining scene. Elmhurst's City Centre boasts a movie theater, an assortment of eateries and boutiques, and community events such as the annual Rock the Block Party. The Elmhurst Express Trolley connects downtown Elmhurst with the community's other shopping areas, including the Spring Road and York & Vallette business districts. The Trolley is free and runs during the summer and holiday season.

Residents come together for dozens of community events that are held throughout the year. The Memorial Day Parade has taken place every year since its start in 1918 and the annual St. Patrick's Day Parade is the third largest in the Chicagoland area.

With its proximity to O'Hare International Airport, the Tri-State Tollway, and the Eisenhower Expressway, Elmhurst offers convenient transportation options. A Metra train station is also located in town, providing easy access to downtown Chicago.









## YVONNE DESPINICH

BROKER | CRS

(630) 989-9500

YVONNED@ATPROPERTIES.COM

MOVETOELMHURST.COM



## ASHLEY MARKGRAF

BROKER

(630) 742.9245

ASHLEYM@ATPROPERTIES.COM

