

587 SHORELY DRIVE BARRINGTON





ROOM DIMENSIONS

LIVING ROOM : 20' × 12'

DINING ROOM : 10' × 15'

KITCHEN : 10' × 9'

PRIMARY BEDROOM : 12' × 17'

SECOND BEDROOM : 12' × 14'

LAUNDRY/STORAGE : 20' × 14'

REC ROOM : 20' × 12'

PROPERTY INFORMATION AND DETAILS

This is the stylish, move-in-ready townhome you've been waiting for! Located just steps from town, the train, parks, library, and health club - it's all about convenience and lifestyle. Inside, enjoy a stunning, fully renovated interior featuring high-end finishes throughout. The kitchen and bathrooms boast beautiful cabinetry with soft-close doors, quartz countertops, and a sleek glass mosaic backsplash. Appliances include a stainless cooktop with hood, built-in oven, dishwasher, and microwave. The open-concept kitchen flows seamlessly into the dining room - the dividing wall was removed to create a spacious layout perfect for entertaining. A custom, built-in, floor-to-ceiling lighted cabinet with glass doors adds elegance and storage. Enjoy rich hardwood flooring throughout (no carpet!), stone flooring in the kitchen, all-new brushed nickel hardware, solid-core 2- and 6-panel doors, and stylish modern stair rails. Lighting was fully upgraded with all-new fixtures and recessed lights. Step outside to a beautifully fenced and professionally landscaped patio with privacy evergreens - perfect for outdoor relaxing or entertaining. You'll love the organized closets, including a cedar closet, a large laundry area with a washer/dryer and utility sink, and abundant storage in the basement. Roof and gutters were new in 2022. Truly move-in ready. Located in the highly rated Barrington school district!



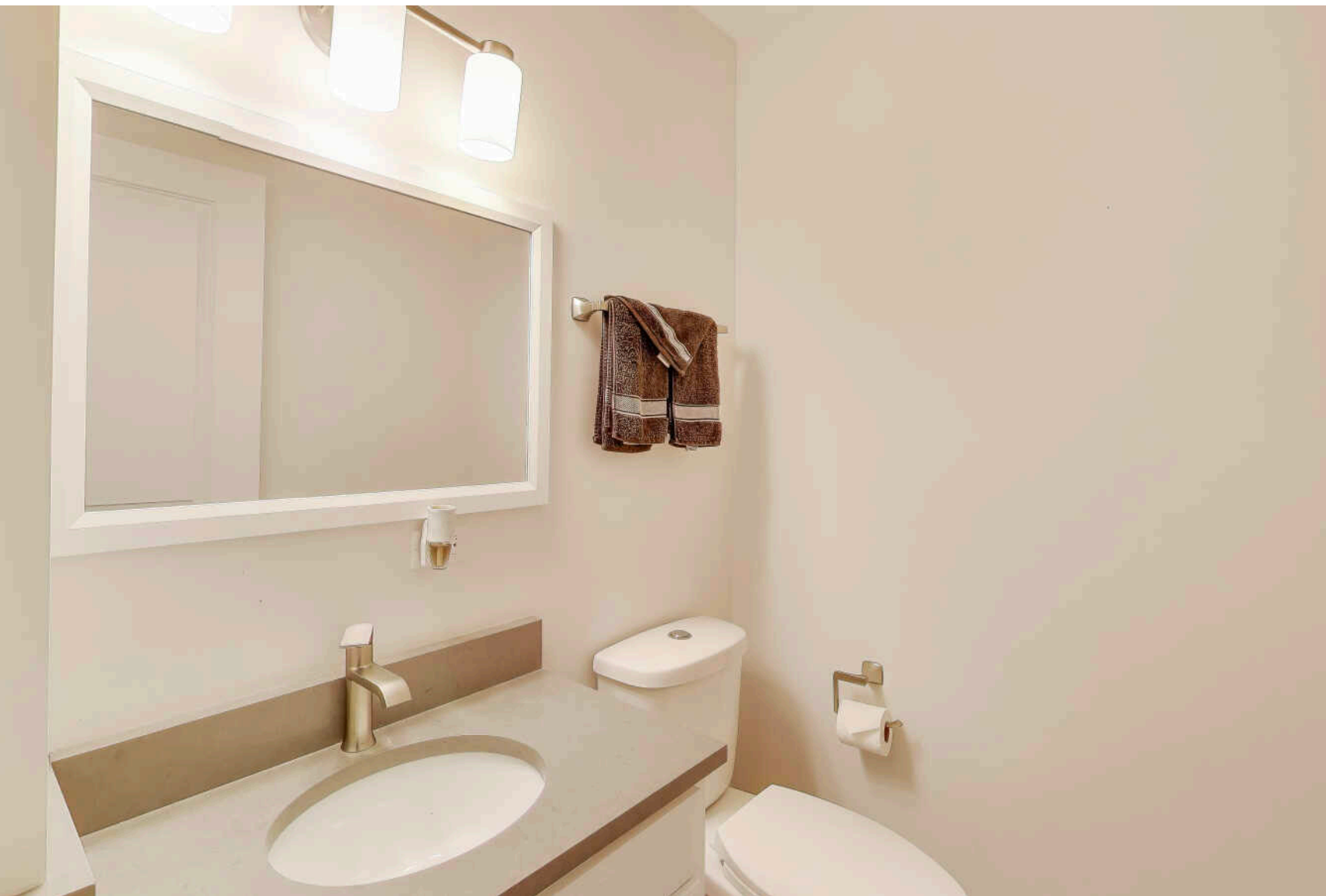
2 BEDROOM

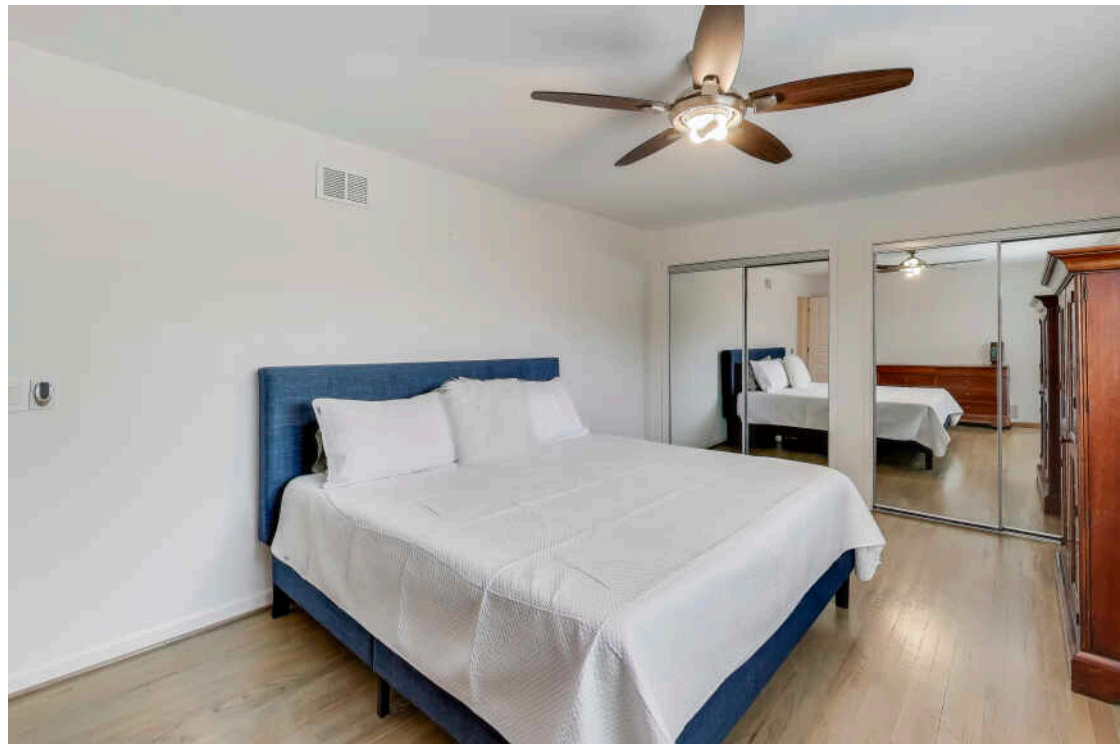
1.1 BATH

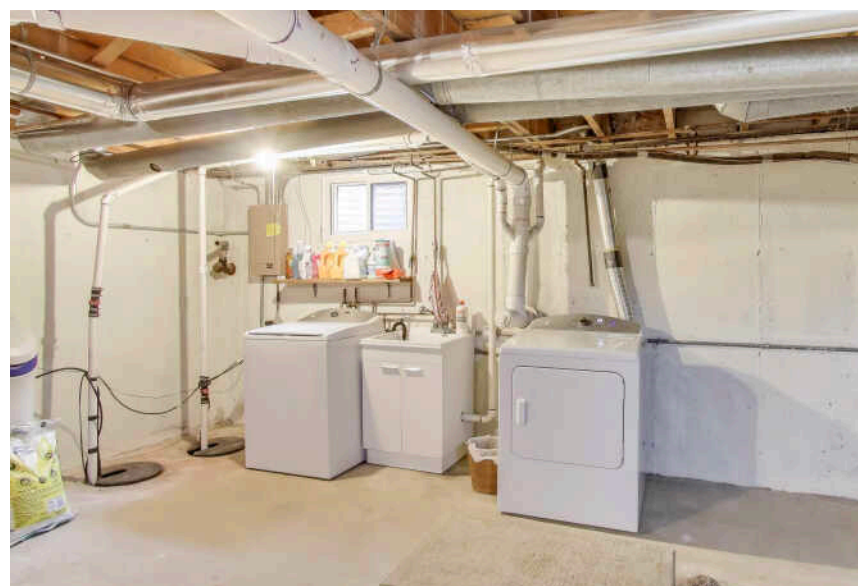
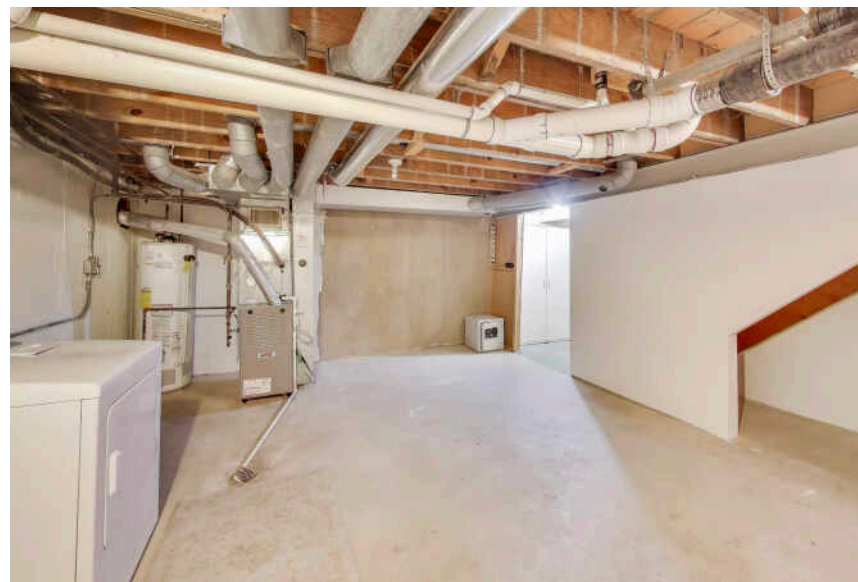
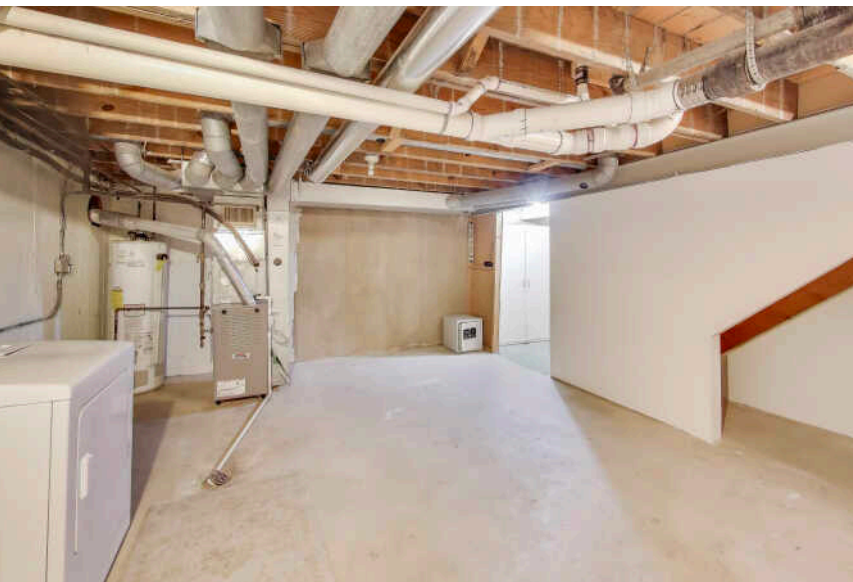
TAXES: \$4,569

ASSESSMENTS: \$273 / MONTH











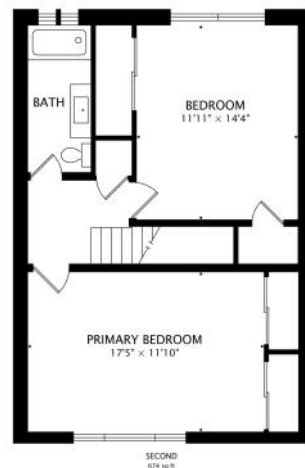
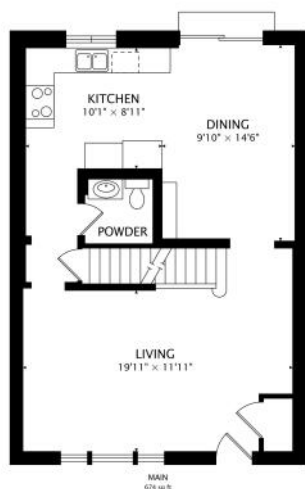
THE VILLAGE OF **BARRINGTON** MAY HAVE THE LARGEST RESIDENTIAL HISTORIC DISTRICT IN THE STATE, BUT IT'S DEFINITELY NOT LIVING IN THE PAST

Many of the beautifully-restored Victorian, Gothic, and Queen Anne homes that line the village's main streets have been repurposed as unique shops and businesses. Meanwhile, homeowners have rehabbed and restored many historic homes back to their former glory with the addition of modern amenities. The village's historic theater opened in 1927 and still operates today.

Barrington also thrives when it comes to recreation. Citizens Park is one of the area's gems, offering wide-open spaces as well as tennis and basketball courts, cross-country ski trails, nature paths, an events pavilion, and a tree house.

The village's downtown center is filled with shoppers, diners, and residents enjoying one of the area's special events, whether it's an art festival, wine walk, or a farmers market. The nearby Barrington Metra station provides a convenient commute to downtown Chicago.

Barrington homes range from Victorians and Colonials to stunning new construction and sprawling mansions with large lots and water views.





TRACY MCBREEN

(847) 812-4663

847-957-6500

TRACYMCBREEN@ATPROPERTIES.COM



All specifications, features, designs, price, assessments, taxes and materials are subject to change without notice. Depicted floor plans and architectural renderings are only an artist's impression.

