

# 594 SHERIDAN SQUARE #3

EVANSTON



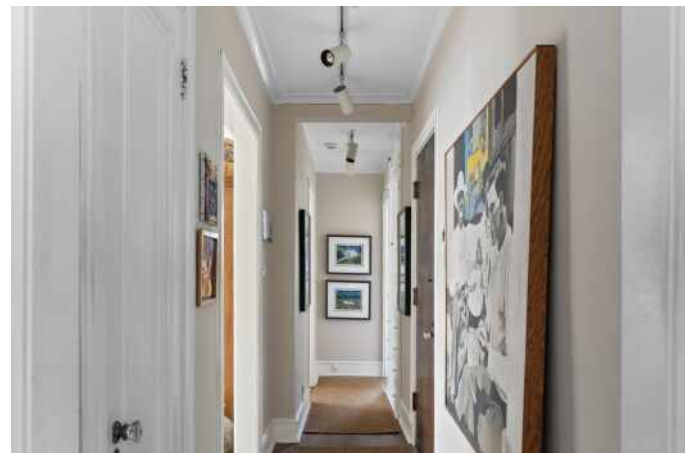
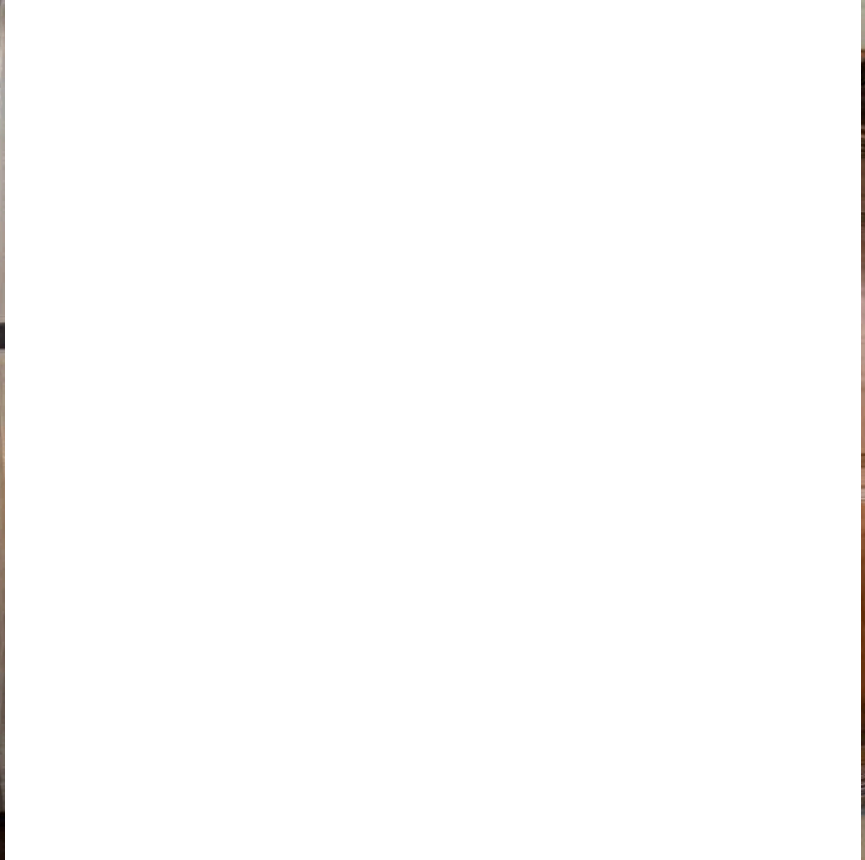




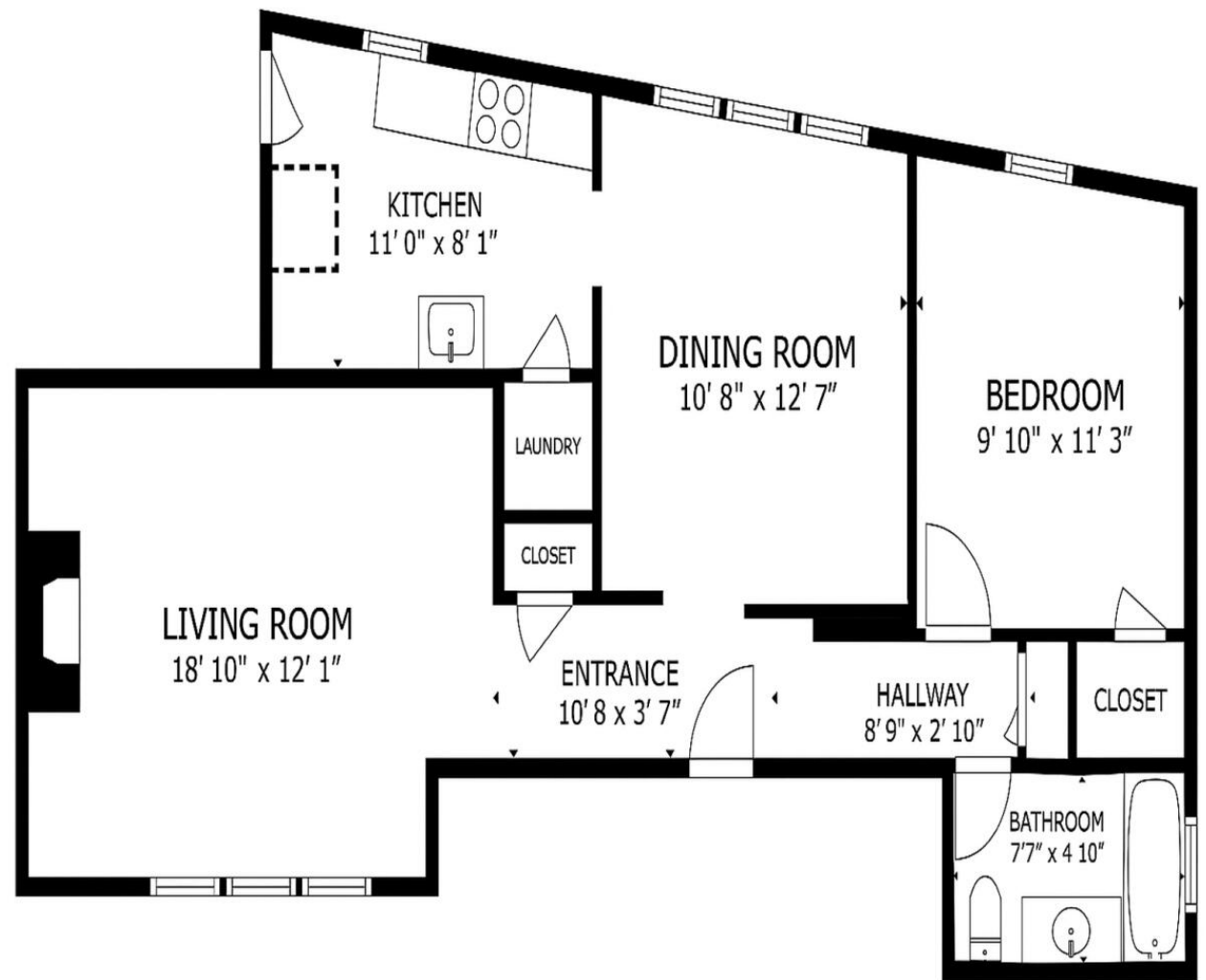
SHERIDAN SQUARE... LIFE IS BETTER ON THE LAKE.

1 BEDROOM  
1 BATH  
TAXES: \$4,169  
ASSESSMENTS: \$493 / MONTH









Floor plan for illustration purposes only. Dimensions are approximate.





NESTLED ALONG THE SHORES OF LAKE MICHIGAN, **EVANSTON** BLENDS NATURAL BEAUTY WITH VIBRANT CITY LIVING.

Known for its historic homes, tree-lined streets, and scenic beaches, it's a community full of character and charm.

Home to prestigious Northwestern University, Evanston offers a rich mix of culture, education, and entertainment – from Big Ten sports and academic events to art galleries, theaters, and music.

The lively downtown features bookstores, boutiques, restaurants, and cafes that attract both locals and visitors. Outdoor lovers can explore miles of parks, nature trails, and public beaches.

Evanston offers a wide range of housing options – from grand lakefront mansions and classic single-family homes to modern townhomes and high-rise condos near shops and transit.

With easy access to downtown Chicago via CTA trains, buses, Pace routes, and three Metra stations, Evanston is a connected, convenient, and inspiring place to call home.







## NOTES

[illegible]



## ERIN FERRILL SEABURY

ERIN SEABURY HOME + DESIGN

M. 224.417.5779

E. [ERINSEABURY@ATPROPERTIES.COM](mailto:ERINSEABURY@ATPROPERTIES.COM)



**CHRISTIE'S**  
INTERNATIONAL REAL ESTATE