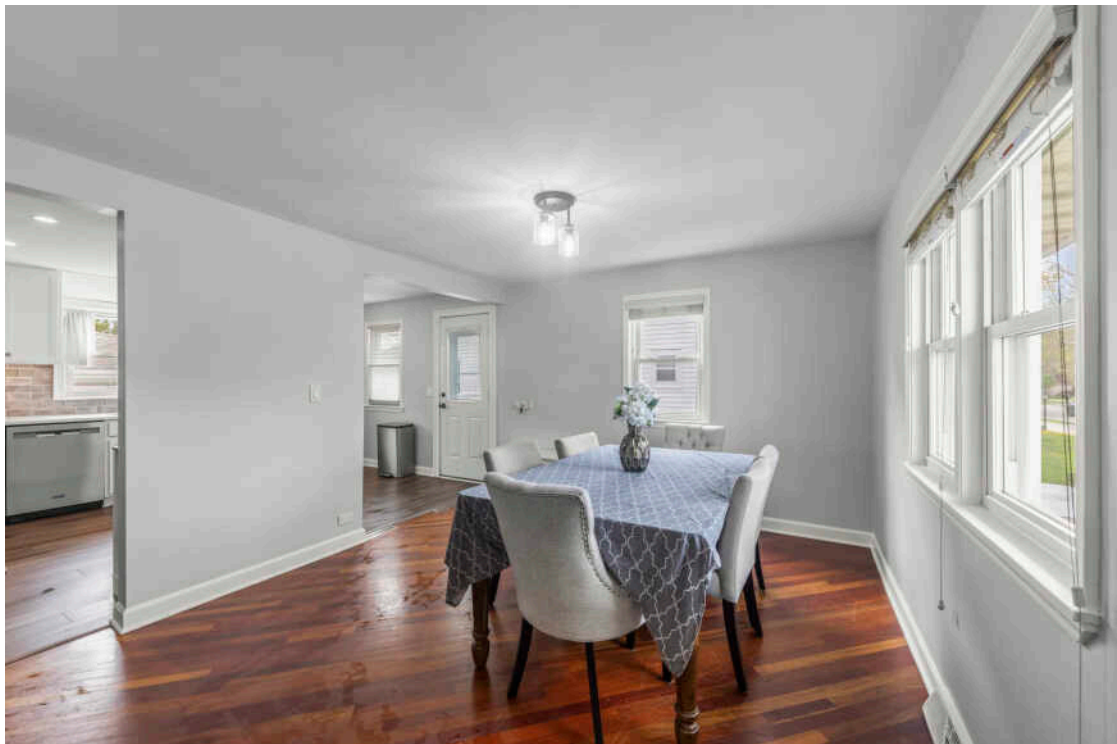
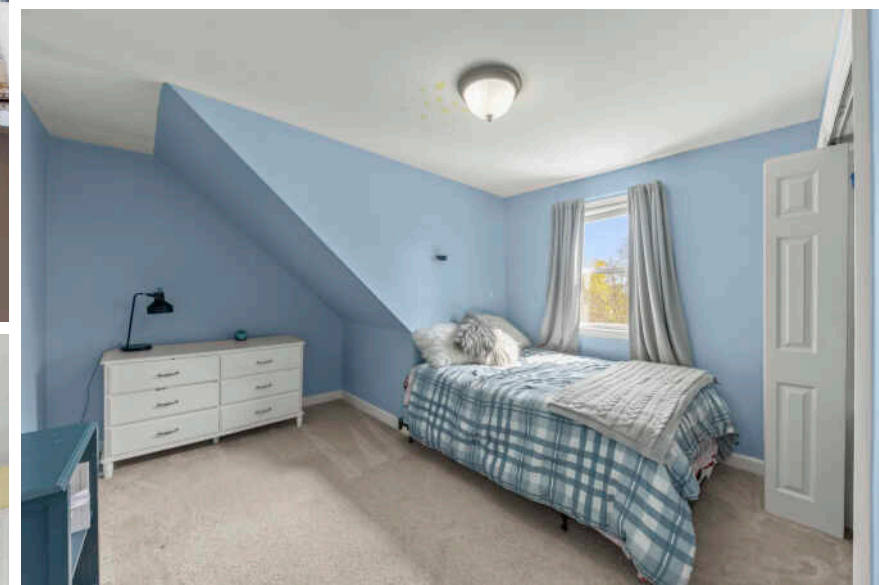
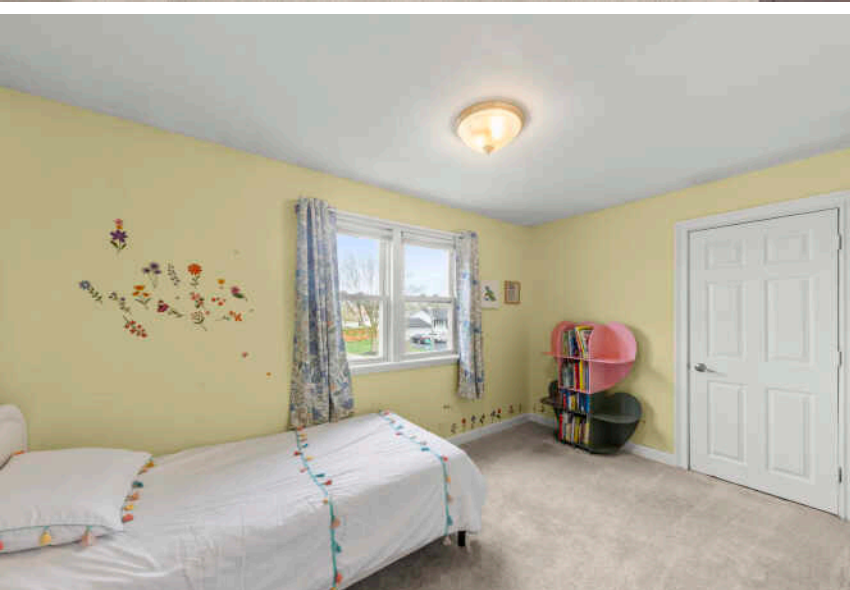
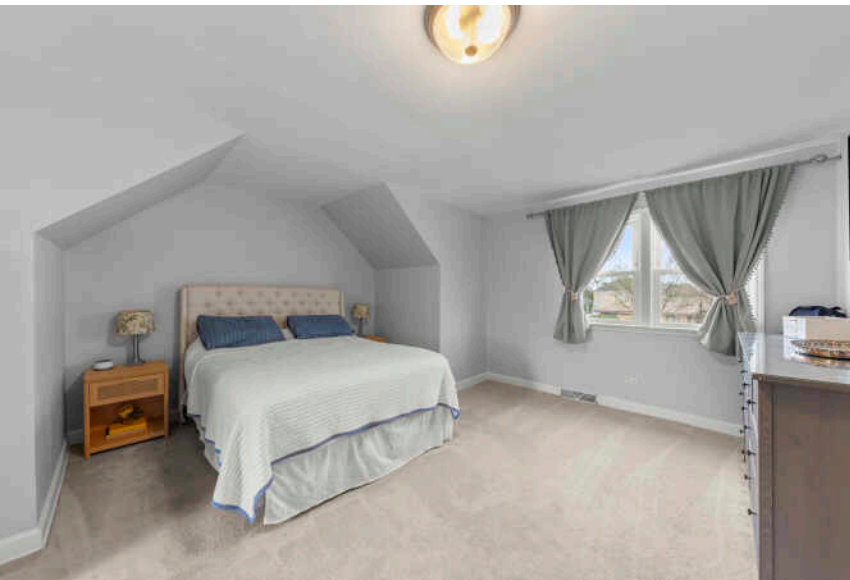
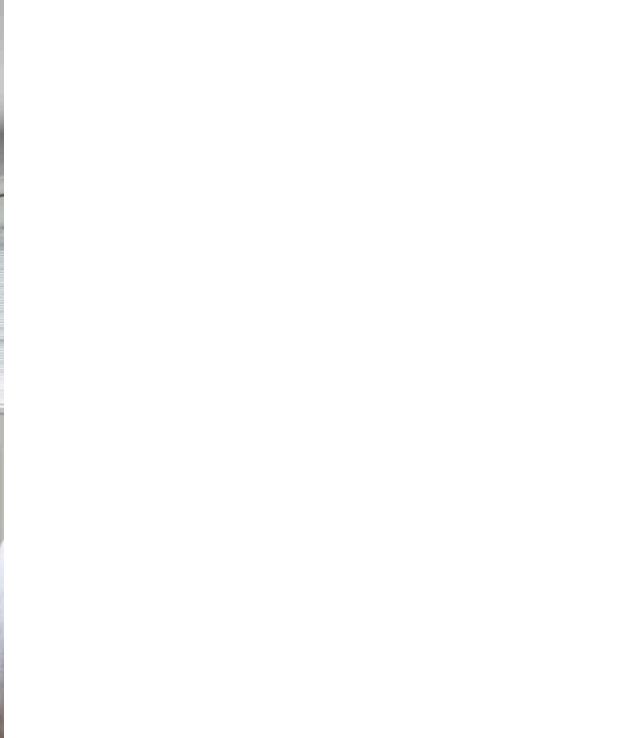


597 N WEST AVENUE  
ELMHURST



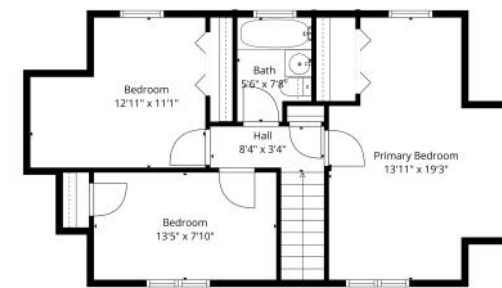


Updated & Expanded Cape Cod offering 4 bedrooms, 3 full baths, and a 2.5-car garage on a large private lot. The newly updated kitchen features custom cabinetry, quartz countertops, newer flooring, stylish backsplash, and stainless steel appliances. A separate dining room flows into a bright, inviting family room-perfect for everyday living and entertaining. The main level includes a bedroom and full bath, ideal for guests or flexible living. Upstairs, you'll find three additional bedrooms, including a spacious primary suite and an updated full bath. Additional highlights include updated windows, beautiful cherry wood flooring on the main level, and a finished basement with office, recreation room, playroom, and full bath-offering excellent additional living space. Fantastic location close to schools, parks, and transportation. Just a half block to Berens Park and the new Wagner Community Center (coming 2027), and only 2 miles to the train and vibrant Uptown Elmhurst. Located in highly sought-after Elmhurst School District 205.

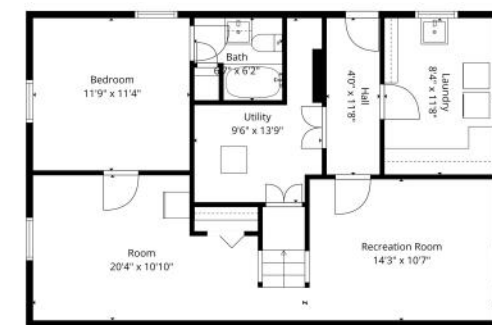




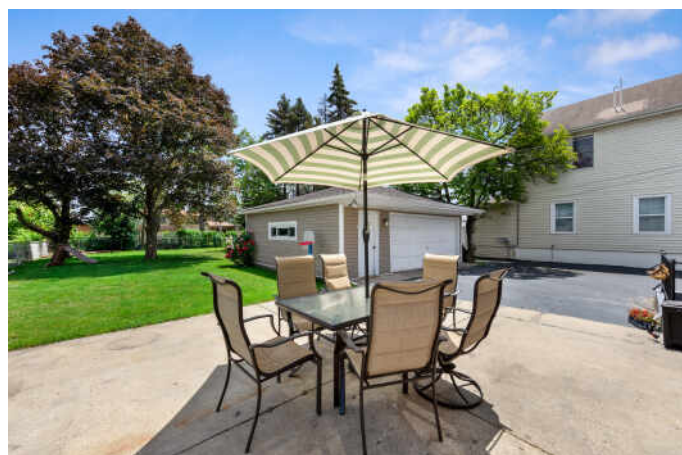
Total G.S.A. 2763 sq. ft. | Total 2287 sq. ft.  
 1st Floor: 643 sq. ft. (Excluded area: 162 sq. ft.)  
 2nd Floor: 616 sq. ft.  
 3rd Floor: 644 sq. ft. (Excluded area: 12 sq. ft.)

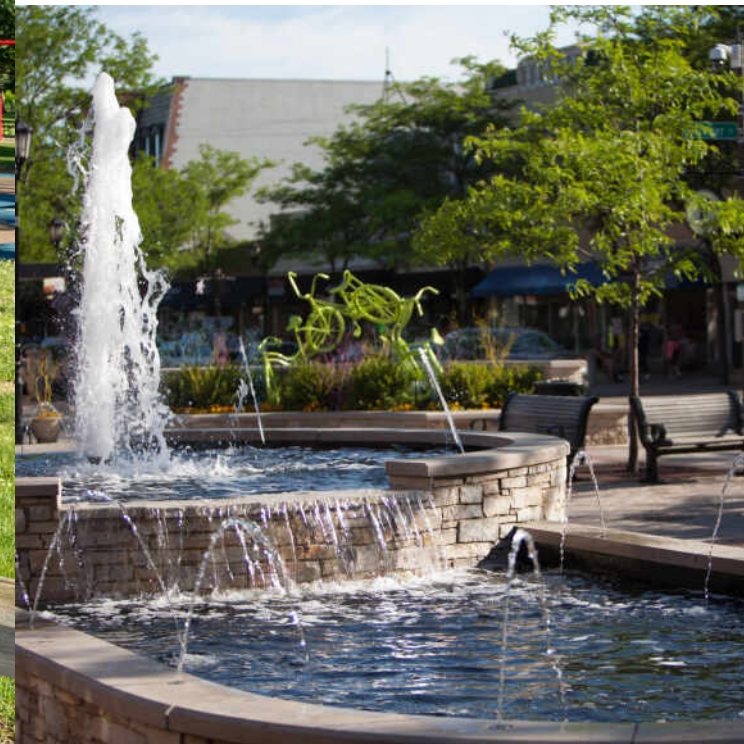


Total G.S.A. 2763 sq. ft. | Total 2287 sq. ft.  
 1st Floor: 643 sq. ft. (Excluded area: 162 sq. ft.)  
 2nd Floor: 616 sq. ft.  
 3rd Floor: 644 sq. ft. (Excluded area: 12 sq. ft.)



Total G.S.A. 2763 sq. ft. | Total 2287 sq. ft.  
 1st Floor: 643 sq. ft. (Excluded area: 162 sq. ft.)  
 2nd Floor: 616 sq. ft.  
 3rd Floor: 644 sq. ft. (Excluded area: 12 sq. ft.)





## ELMHURST IS A VIBRANT COMMUNITY WITH A WEALTH OF SHOPS, RESTAURANTS, AND ARTS AND CULTURE.

Elmhurst's award-winning park district maintains nearly 30 parks as well as trails, playgrounds, and athletic facilities. At the center of town is Wilder Park, where locals will also find the community's public library, Wilder Mansion, the Wilder Park Conservatory, and the Elmhurst Art Museum. The museum has been named the "Best Suburban Art Museum in Chicago" by *Chicago* magazine and is adjacent to the McCormick House, a rare single-family home designed by Mies van der Rohe.

Elmhurst is also home to the Elmhurst History Museum, Elmhurst Symphony Orchestra, GreenMan Theatre Troupe, Elmhurst Choral Union, and Elmhurst Children's Theatre.

In addition to its many cultural offerings, the city is known for its bustling shopping and dining scene. Elmhurst's City Centre boasts a movie theater, an assortment of eateries and boutiques, and community events such as the annual Rock the Block Party. The Elmhurst Express Trolley connects downtown Elmhurst with the community's other shopping areas, including the Spring Road and York & Vallette business districts. The Trolley is free and runs during the summer and holiday season.

Residents come together for dozens of community events that are held throughout the year. The Memorial Day Parade has taken place every year since its start in 1918 and the annual St. Patrick's Day Parade is the third largest in the Chicagoland area.

With its proximity to O'Hare International Airport, the Tri-State Tollway, and the Eisenhower Expressway, Elmhurst offers convenient transportation options. A Metra train station is also located in town, providing easy access to downtown Chicago.





## CARRIE PIKULIK

THE SCHILLER TEAM

630-606-1197

CPIKULIK@ATPROPERTIES.COM

WWW.CARRIEPIKULIK.COM

